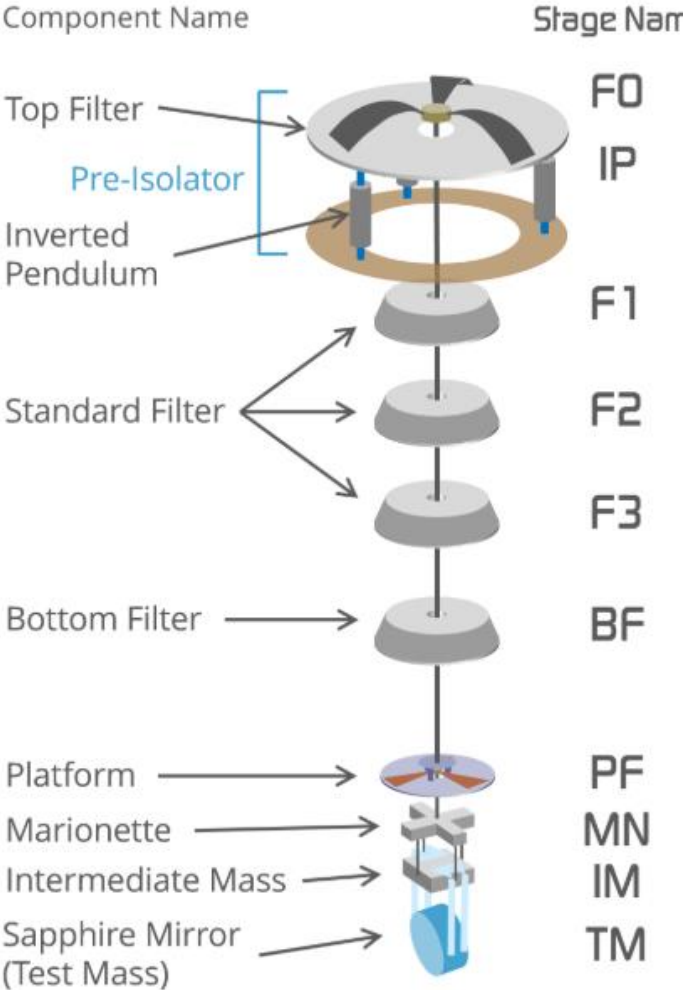
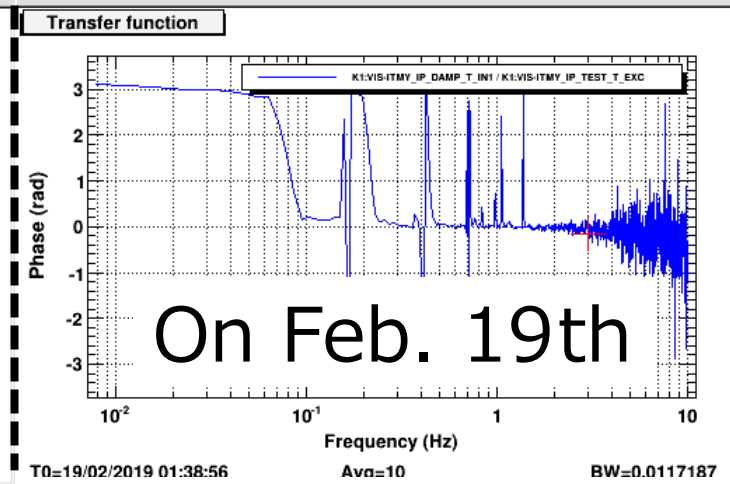
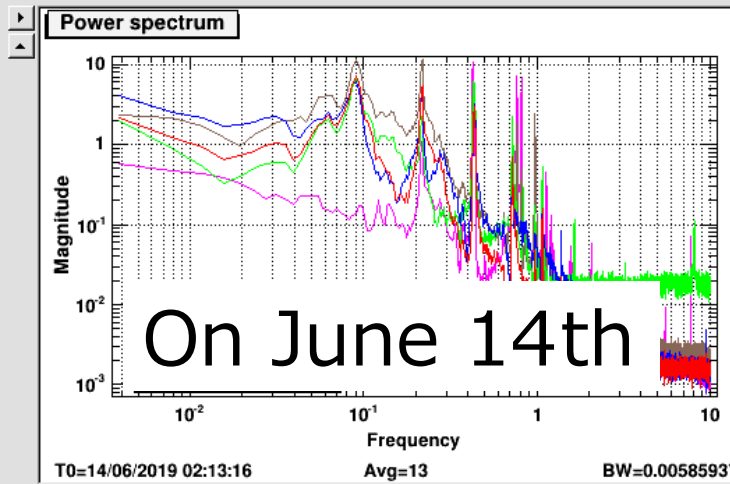
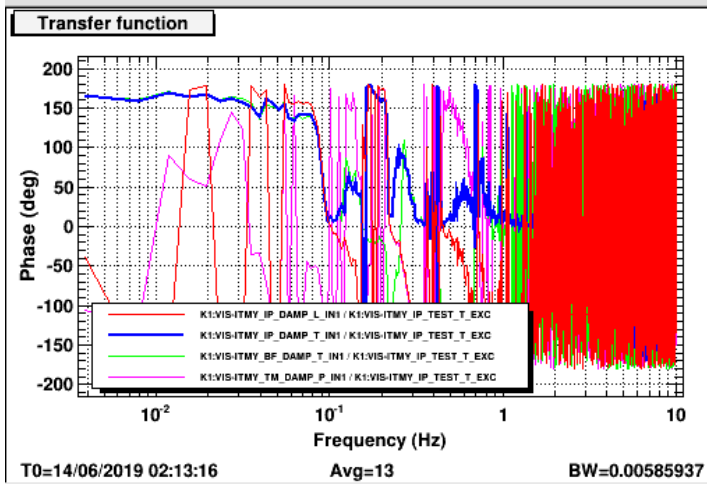
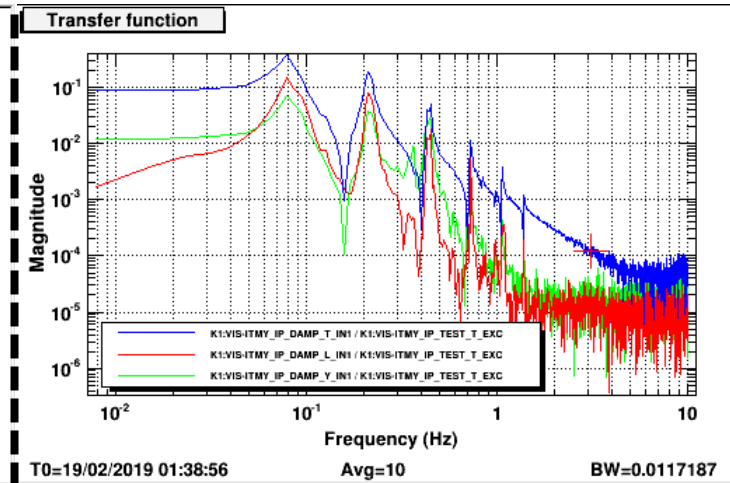
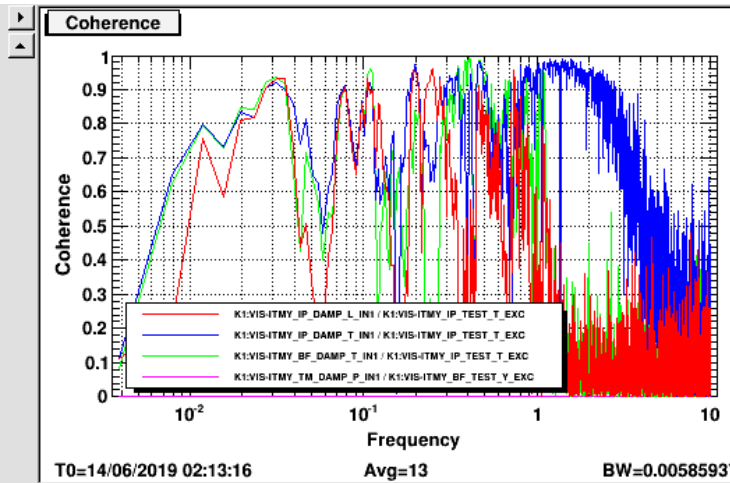
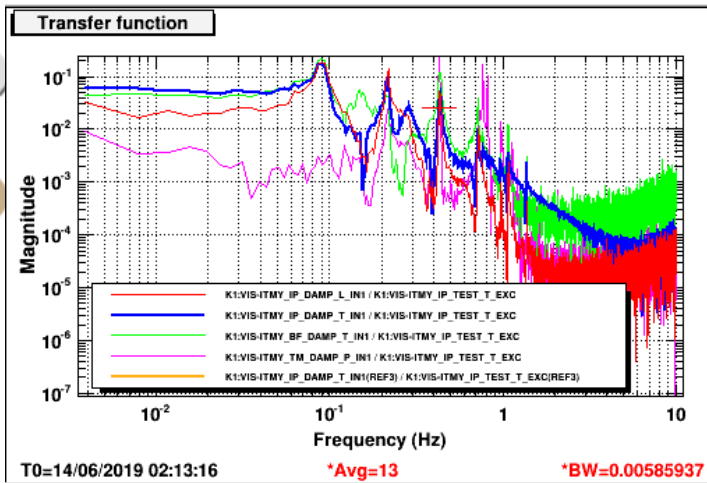
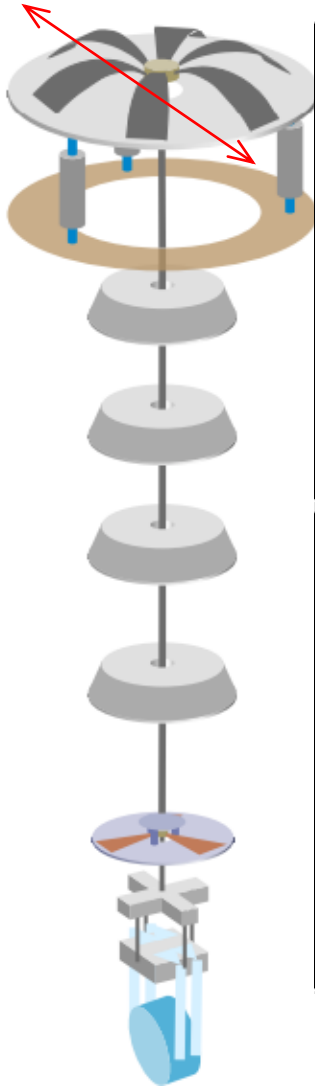


Health check: at ITMY tower part in June 2019.



The issue: mechanical transfer functions looked weird.

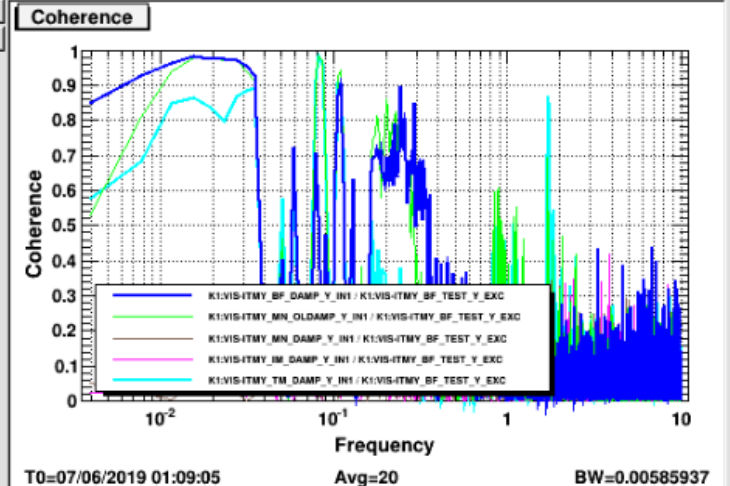
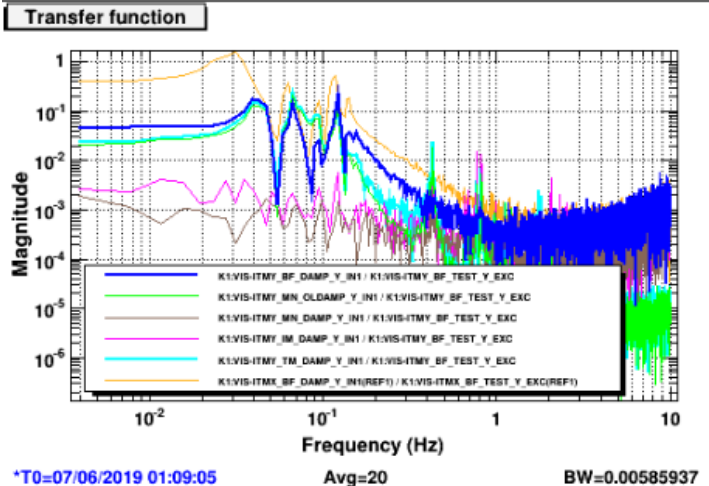
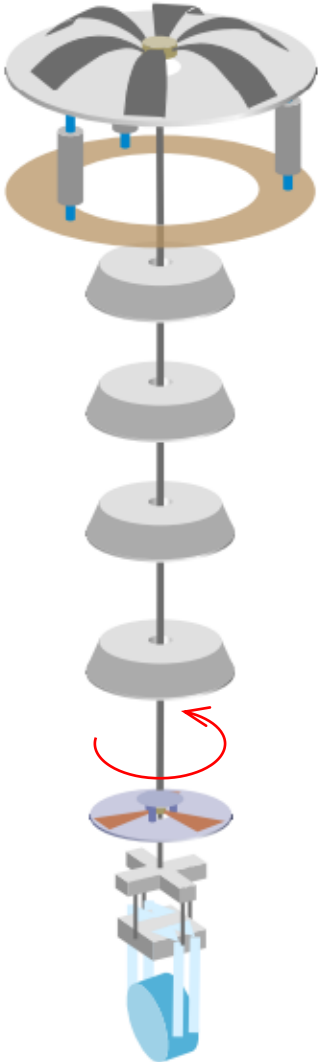
1. IPtrans exc to IPtrans



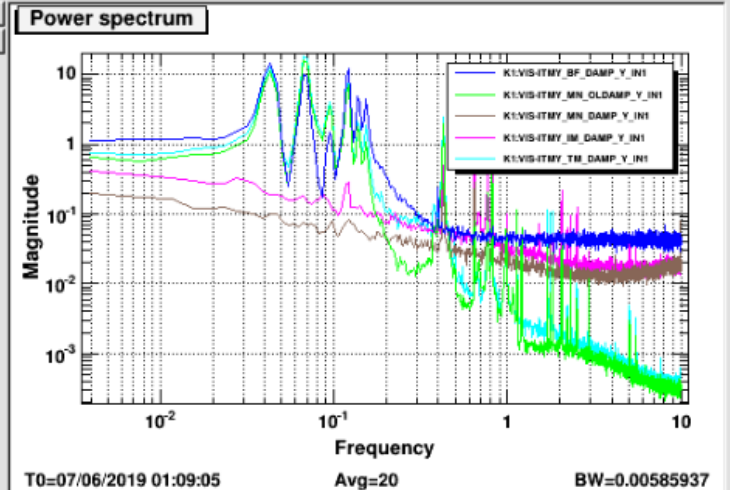
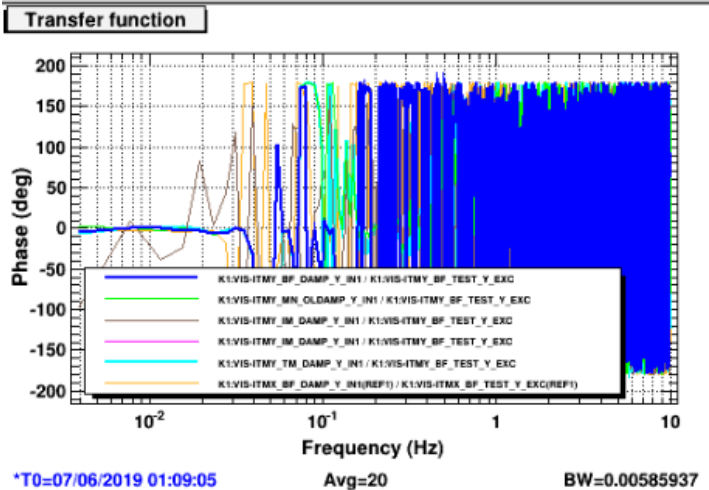
→ Suspension is softly touching to frame?

The issue: mechanical transfer functions looked weird.

2. BFyaw exc to BFyaw

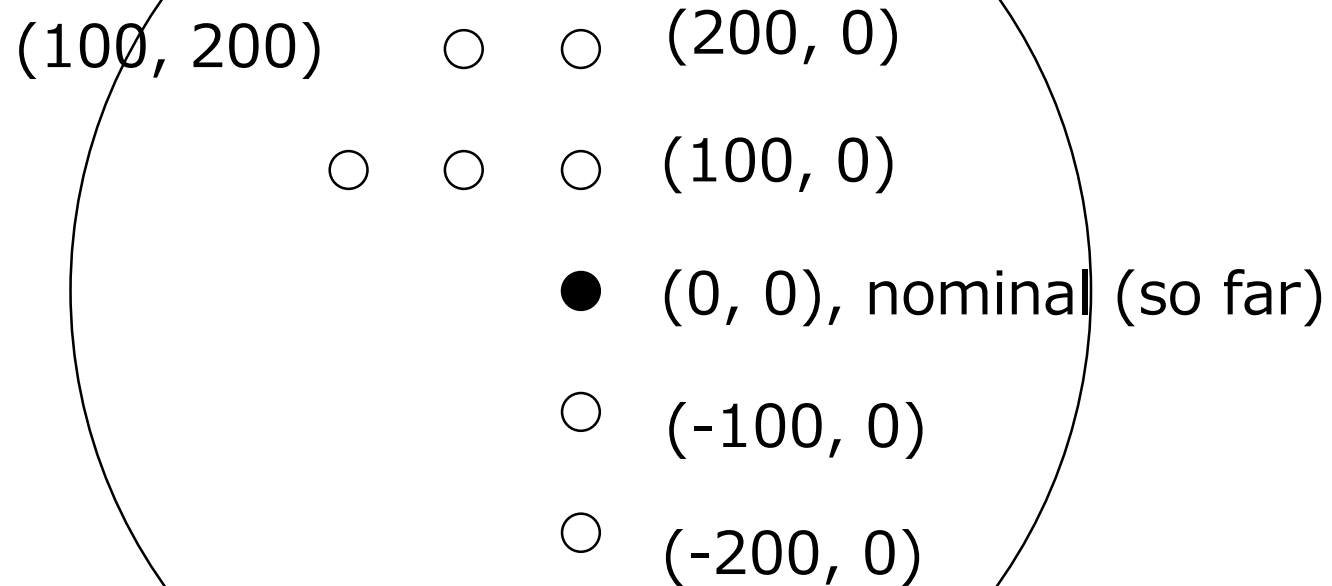
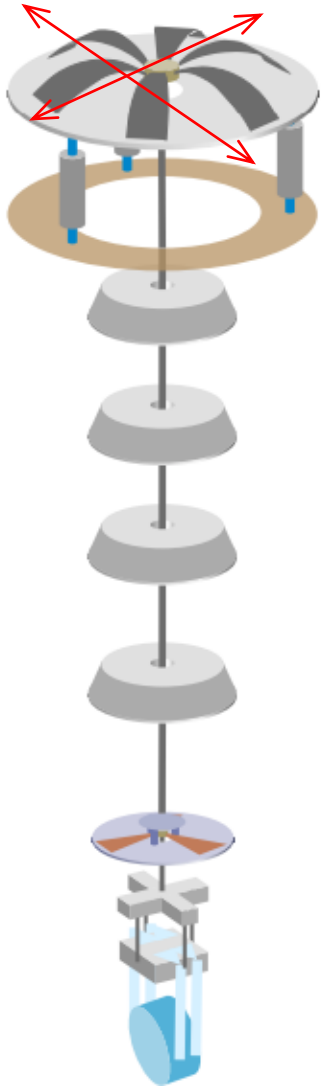


— ITMY
— ITMX,
(healthy one)



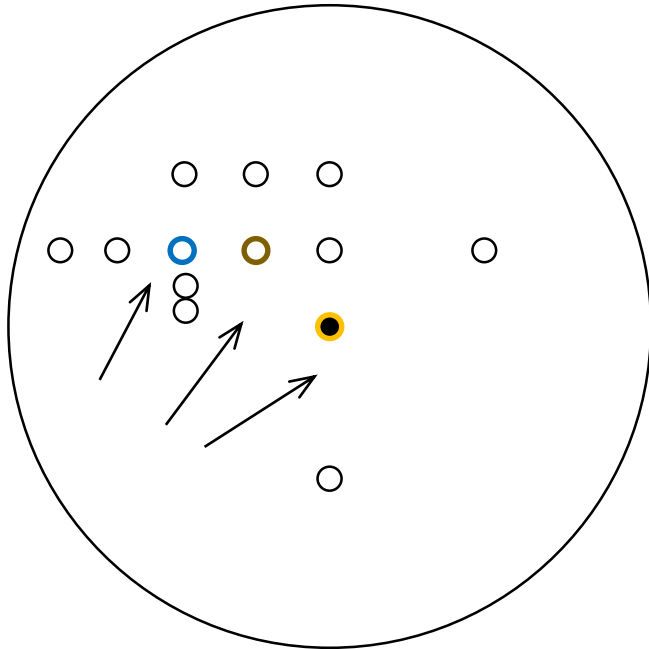
Trial: steering IP in L / T

(K1:VIS-ITMX_IP_DAMP_L_IN, K1:VIS-ITMX_IP_DAMP_T_IN) := (L, T) [um]



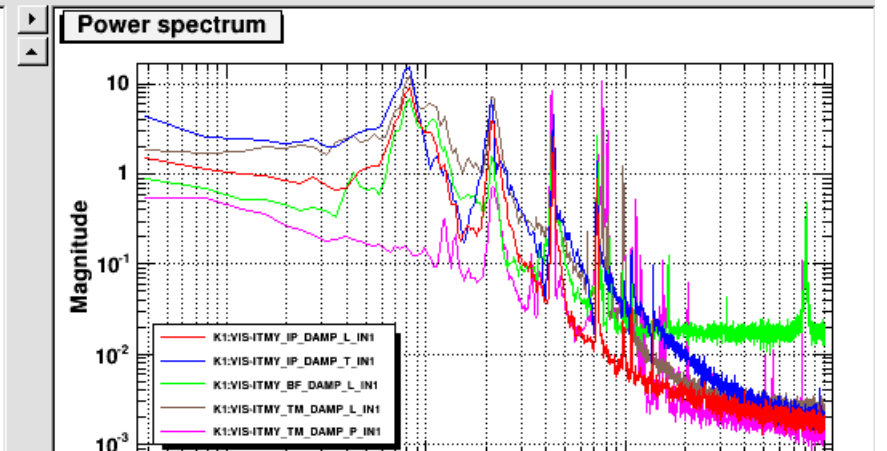
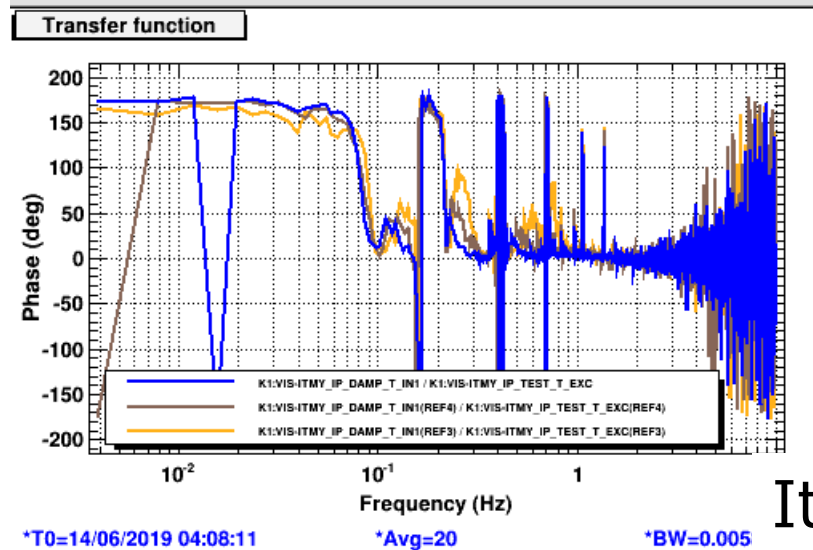
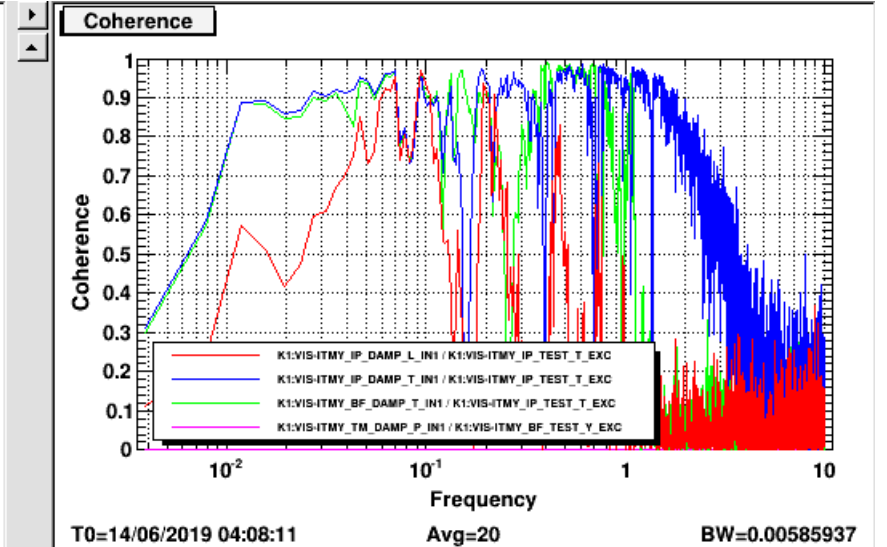
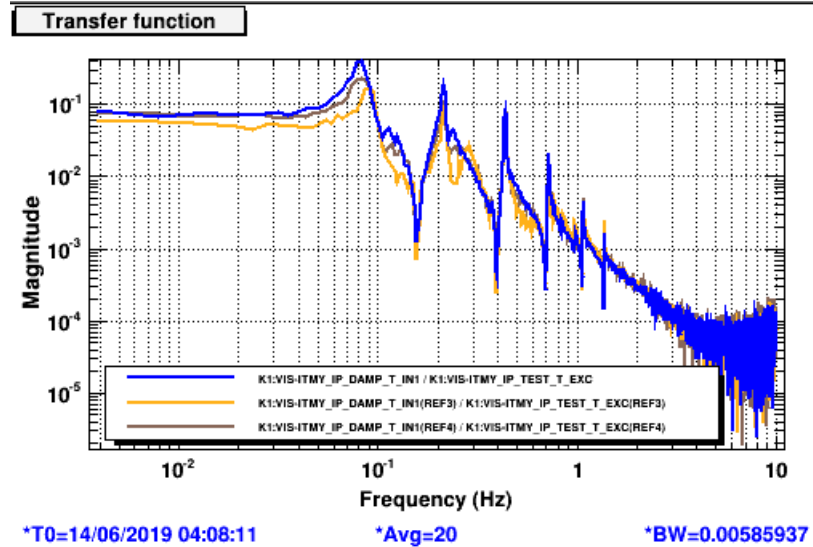
Trial: steering IP in L / T

(K1:VIS-ITMX_IP_DAMP_L_IN, K1:VIS-ITMX_IP_DAMP_T_IN) := (L, T) [um]



(100, 100)

IPtrans exc
to IPtrans



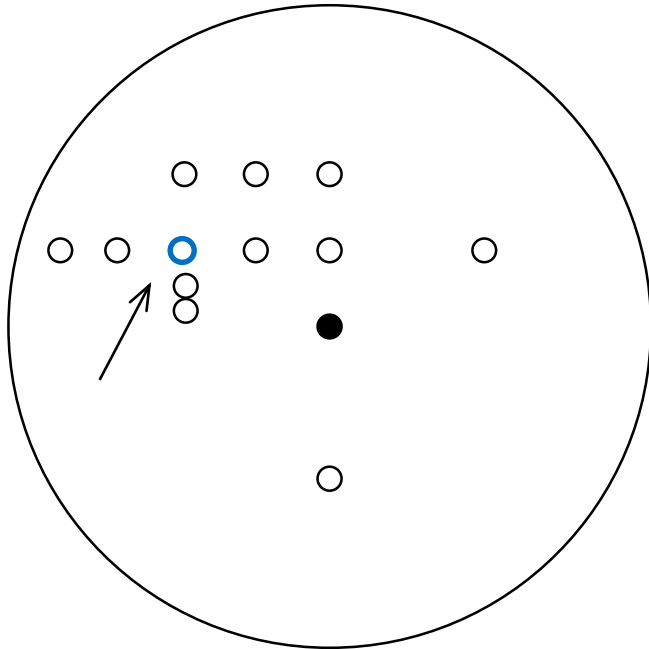
It became improved anyhow.

Trial: steering IP in L / T

ITMY

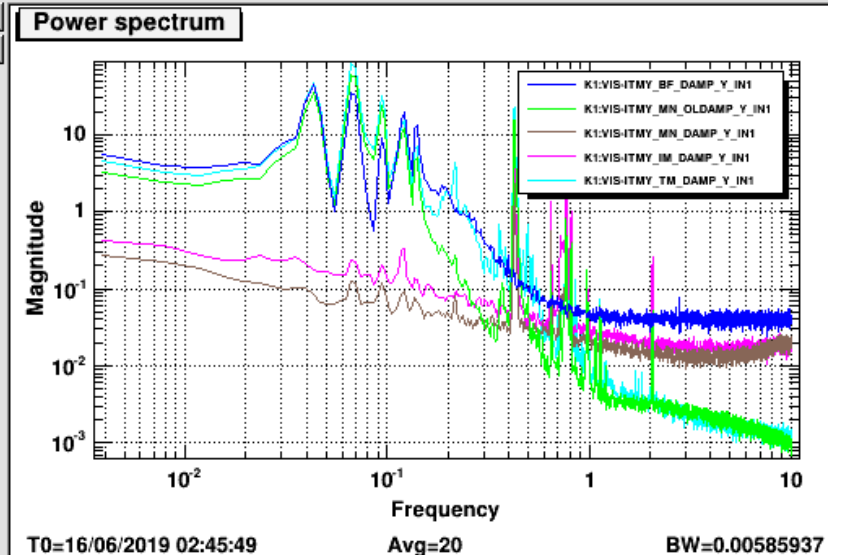
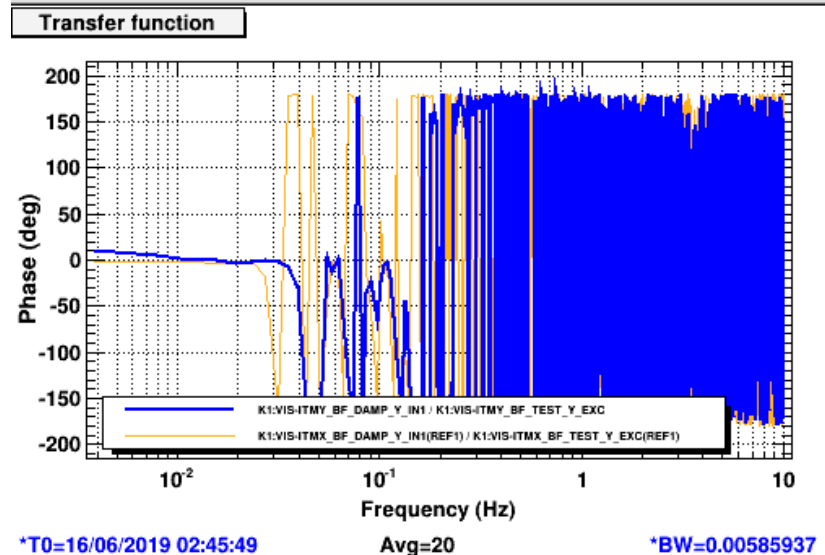
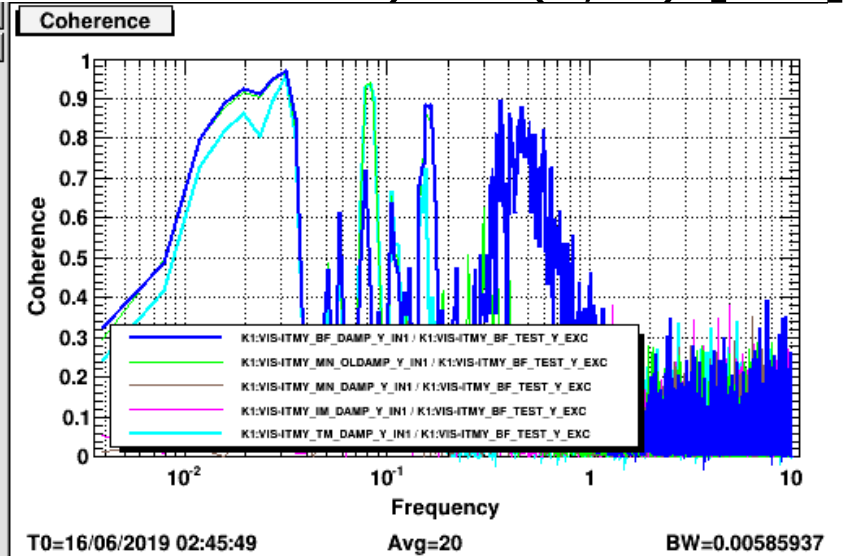
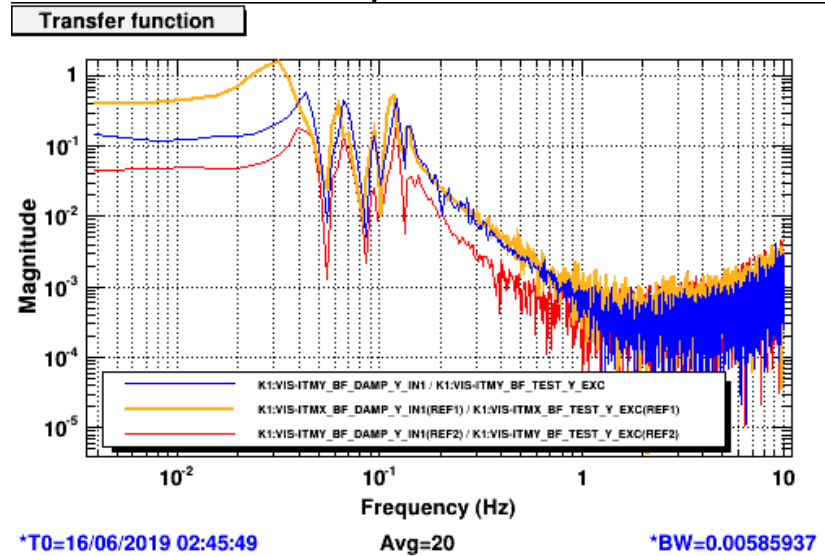
ITMX (healthy one)

(K1:VIS-ITMX_IP_DAMP_L_IN, K1:VIS-ITMX_IP_DAMP_T_IN) := (L, T) [um]



(100, 200)

BFyaw exc
to BFyaw



Status:

- TF of IP and BF depends on the position.
 - (Current) best position for IP looks at $(L, T) = (100, 200)$.
 - still the BFyaw, IPtrans TF looks weird though.
 - Looking for better position might improve this situation.
- Big difference between Feb. and now would be the GAS height adjustment.
 - It was already confirmed that all the GAS filters were freely suspended in vertical though, trying to set back the position might be helpful to solve this issue.

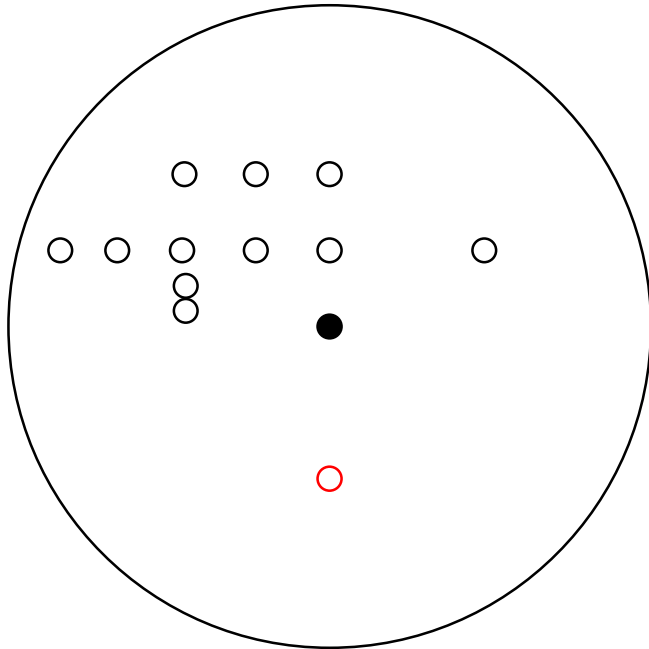
Status:

- I'm (personally) feeling that something is softly touching to the frame, Softly.
 - Although something is happening at ITMY, however, the TFs are not the most terrible ones now and it seems this issue is not so effective to the commissioning work.
 - It would be okay to open the chamber when it is found that this issue affect to the commissioning work.
 - There is no reason to open it ASAP I think.
 - Meanwhile, better position might be found w/o opening the chamber.

Backups

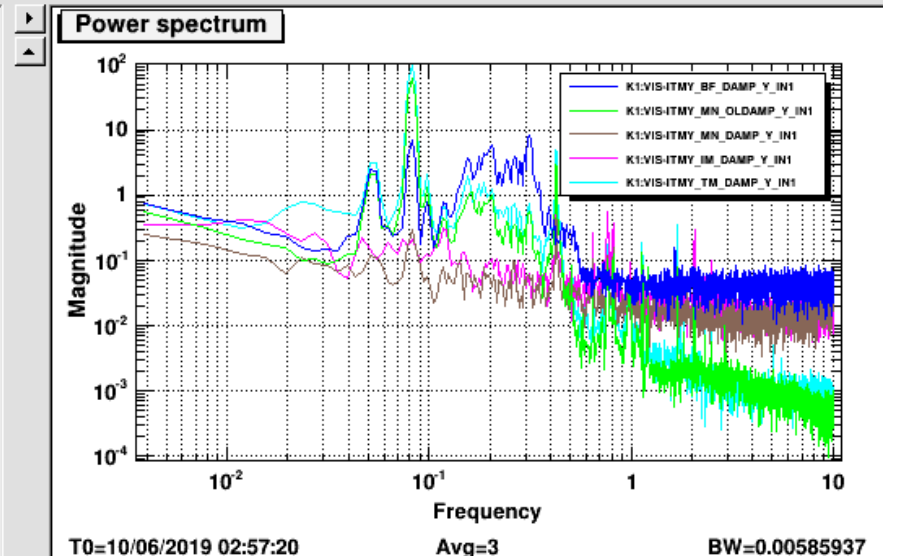
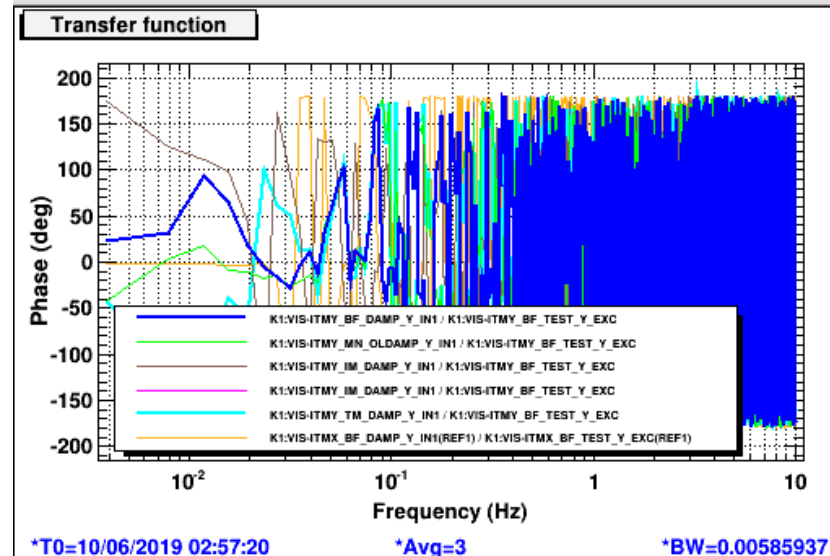
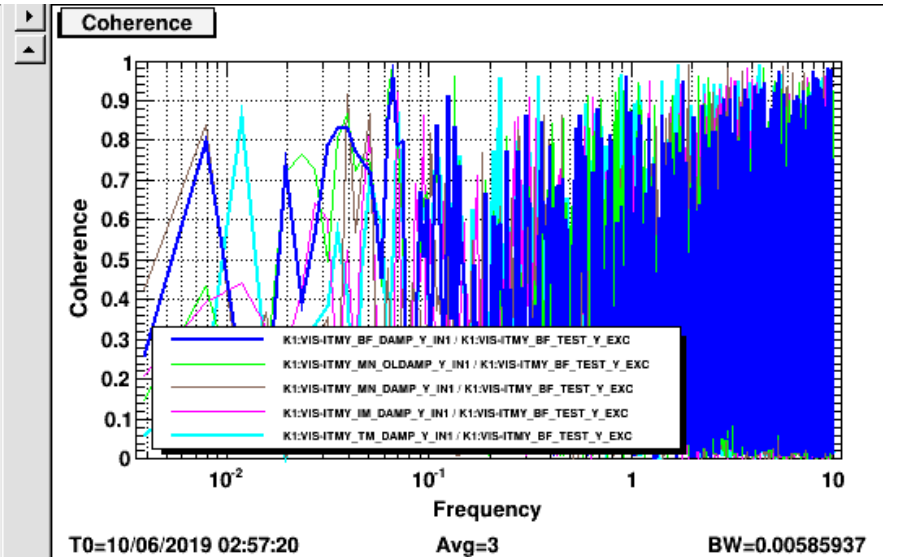
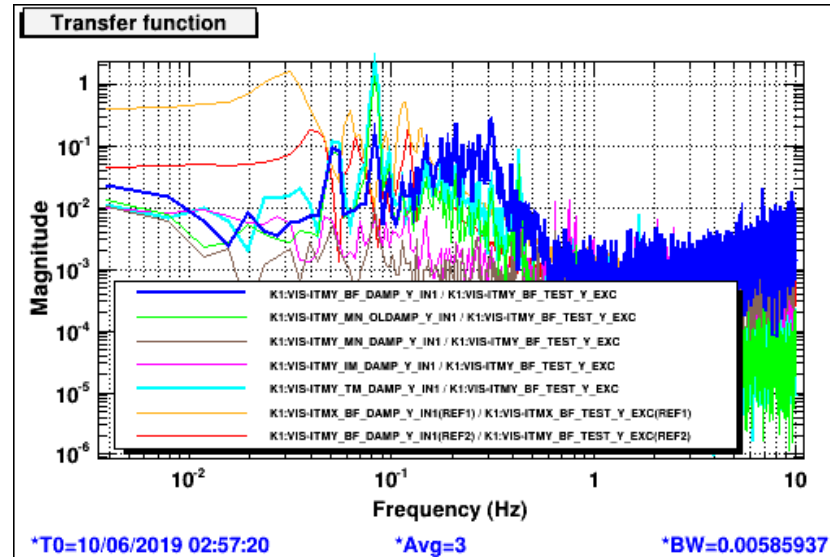
Trial: steering IP in L / T

(K1:VIS-ITMX_IP_DAMP_L_IN, K1:VIS-ITMX_IP_DAMP_T_IN) := (L, T) [um]



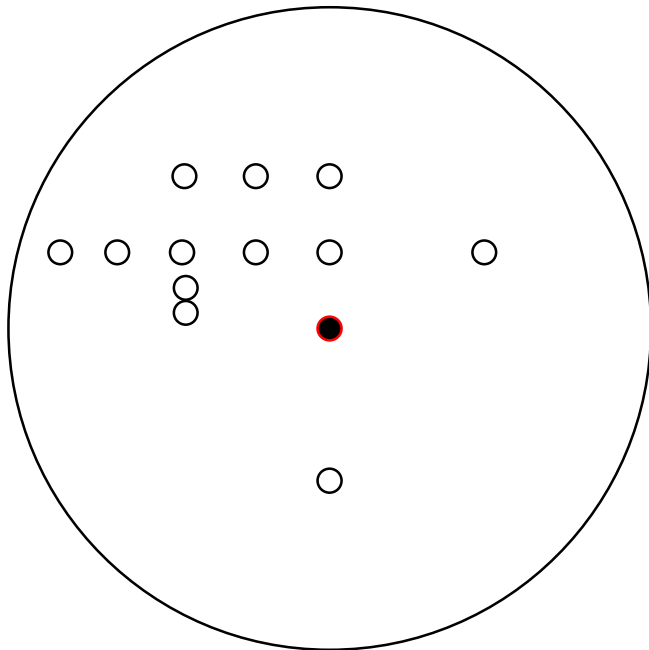
(100, -200)

BFyaw exc
to BFyaw



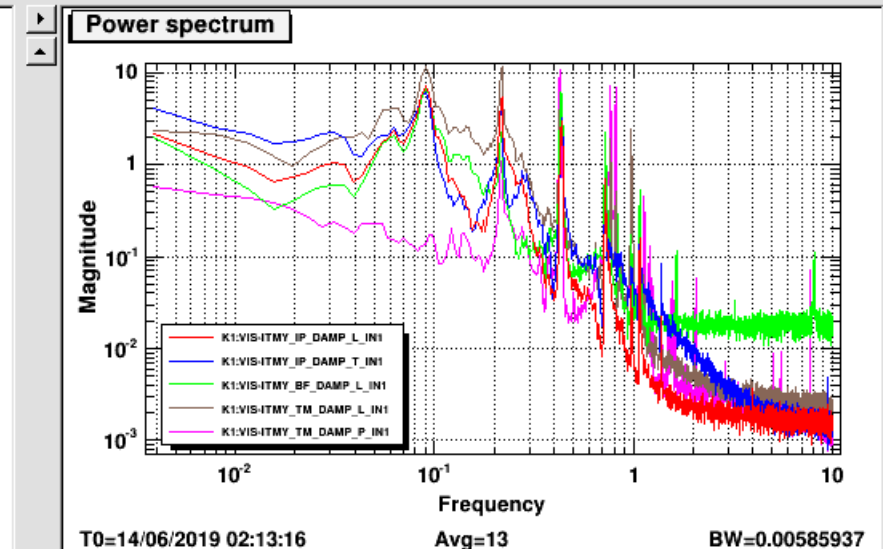
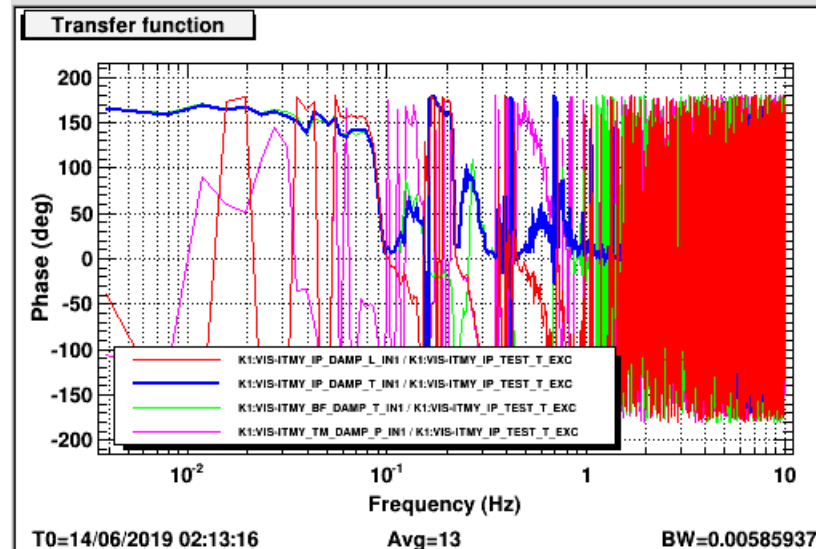
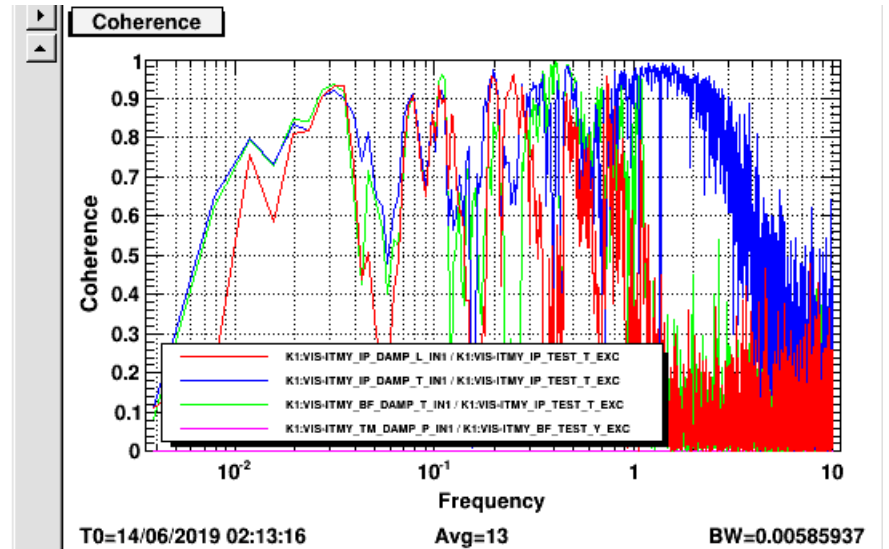
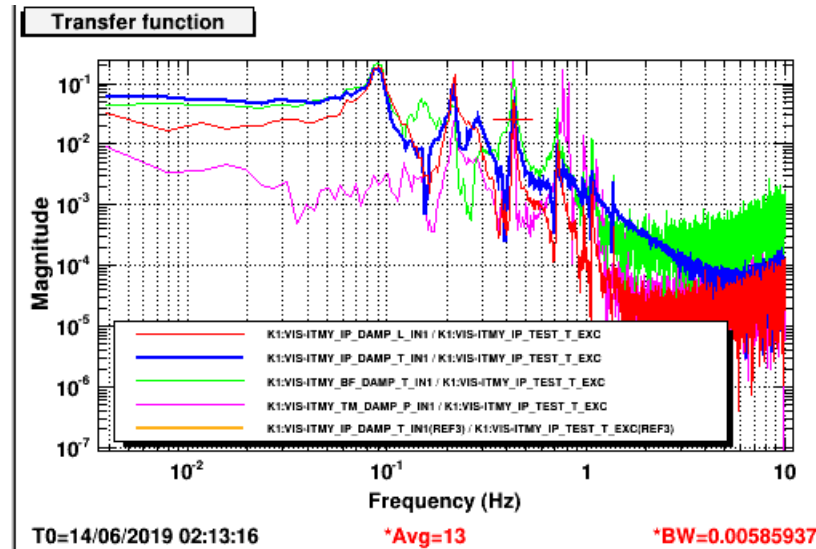
Trial: steering IP in L / T

(K1:VIS-ITMX_IP_DAMP_L_IN, K1:VIS-ITMX_IP_DAMP_T_IN) := (L, T) [um]



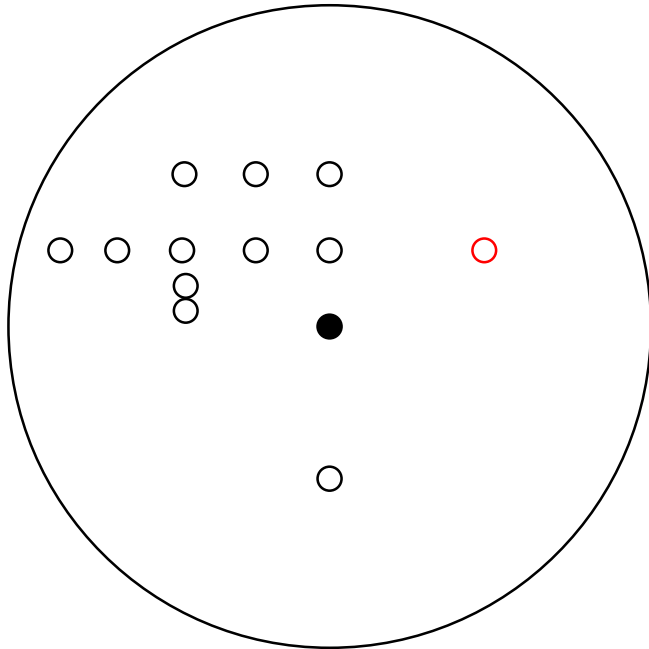
(0, 0)

IPtrans exc
to IPtrans



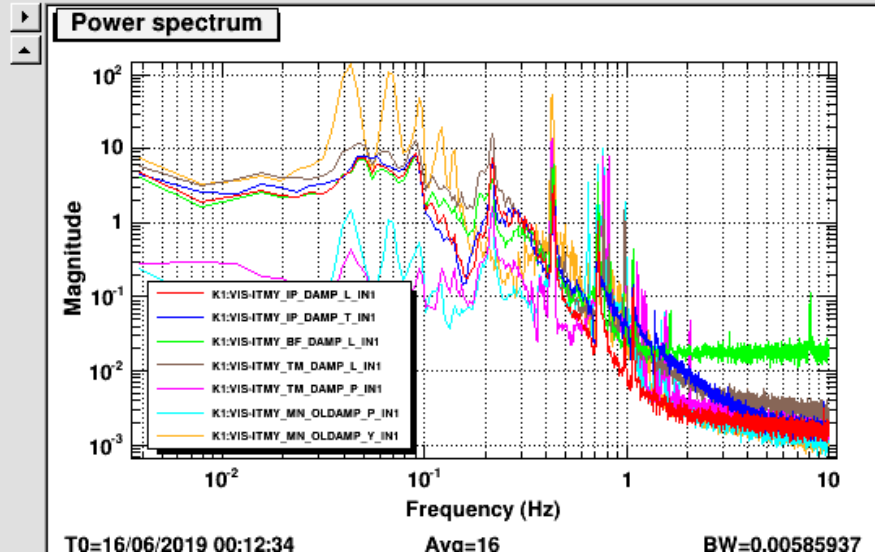
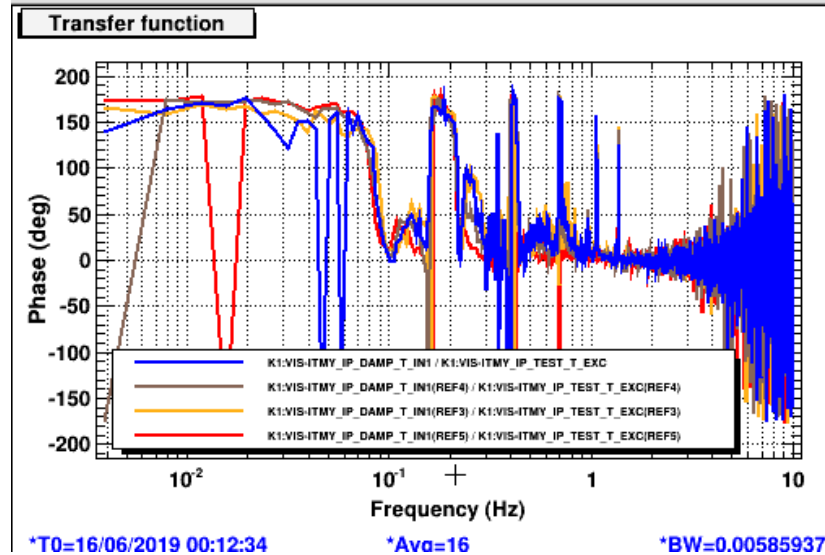
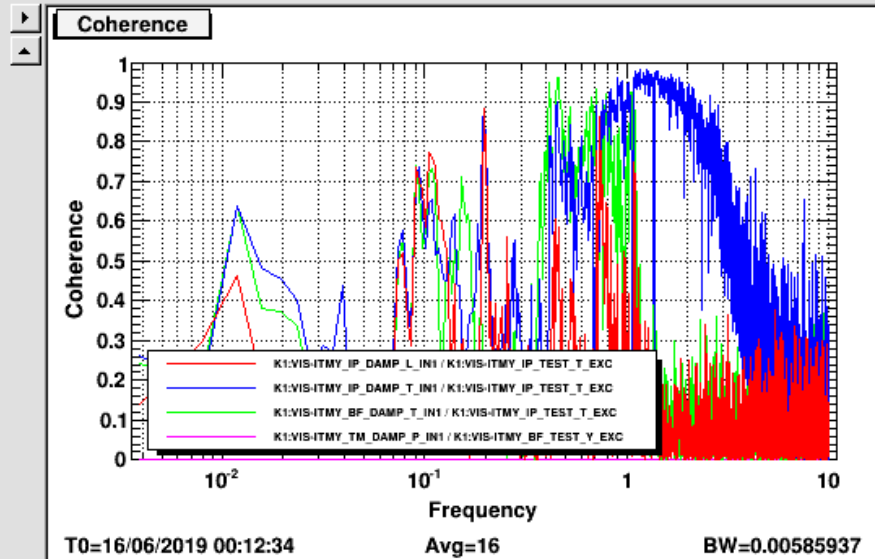
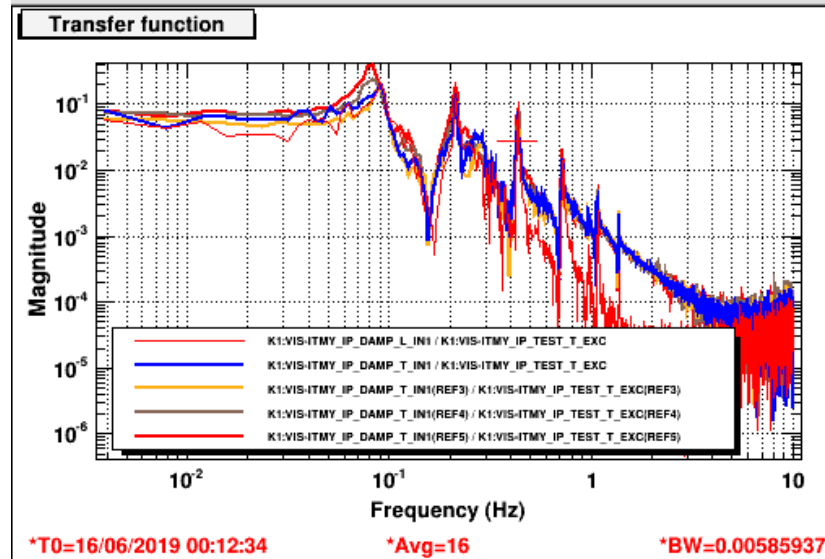
Trial: steering IP in L / T

(K1:VIS-ITMX_IP_DAMP_L_IN, K1:VIS-ITMX_IP_DAMP_T_IN) := (L, T) [um]



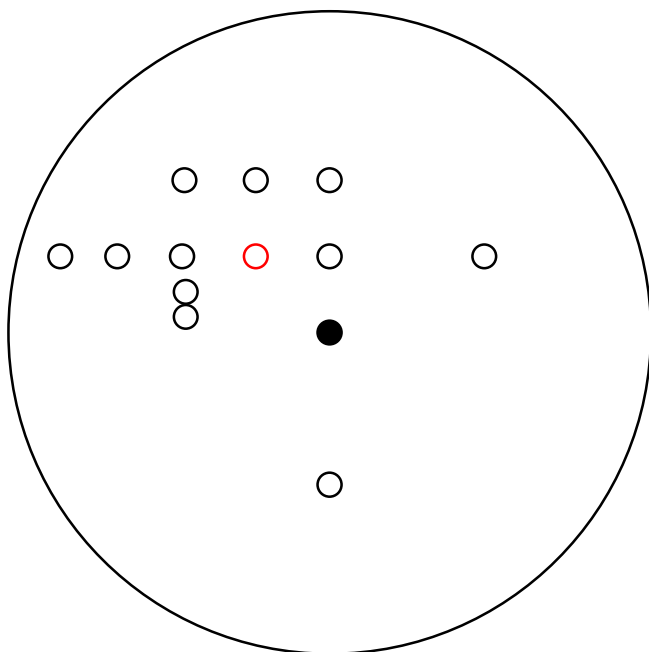
(100, -200)

IPtrans exc
to IPtrans



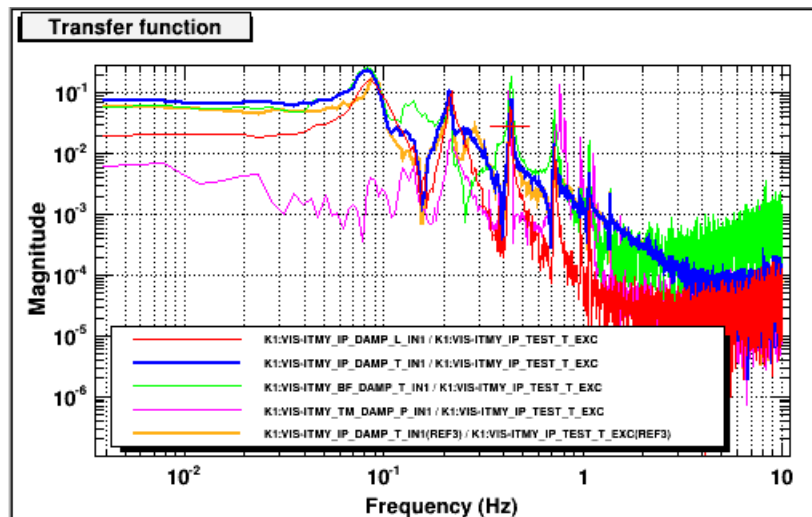
Trial: steering IP in L / T

(K1:VIS-ITMX_IP_DAMP_L_IN, K1:VIS-ITMX_IP_DAMP_T_IN) := (L, T) [um]

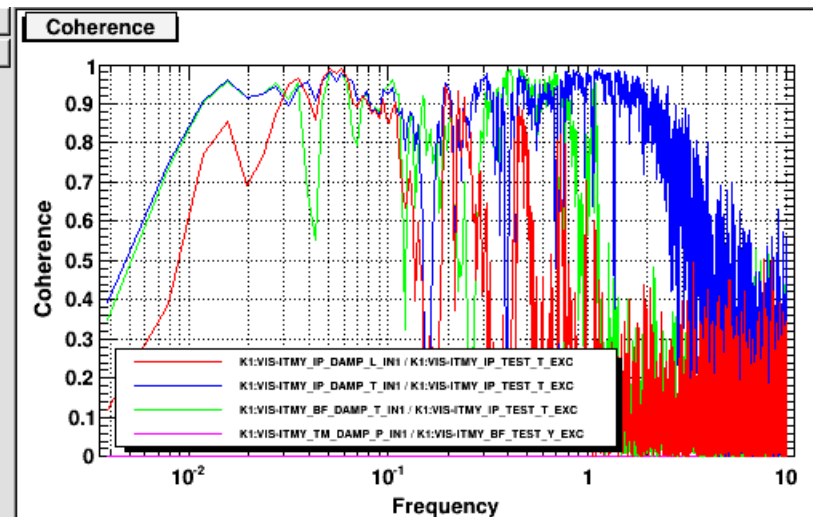


(100, 100)

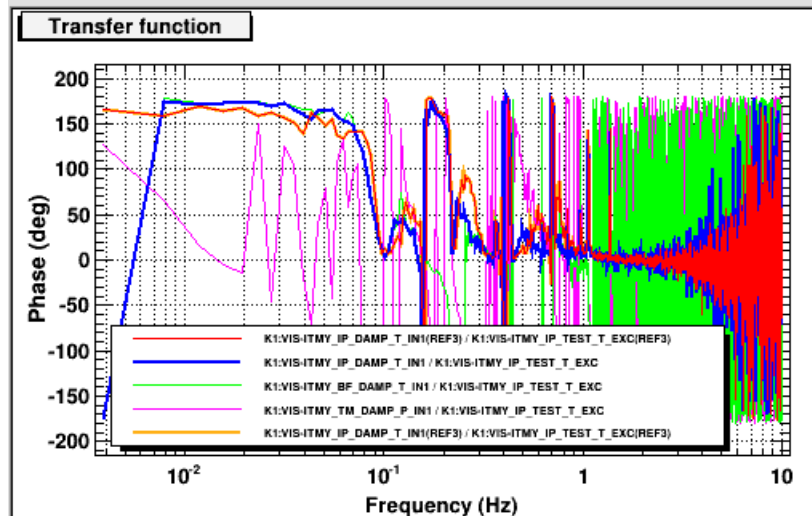
IPtrans exc
to IPtrans



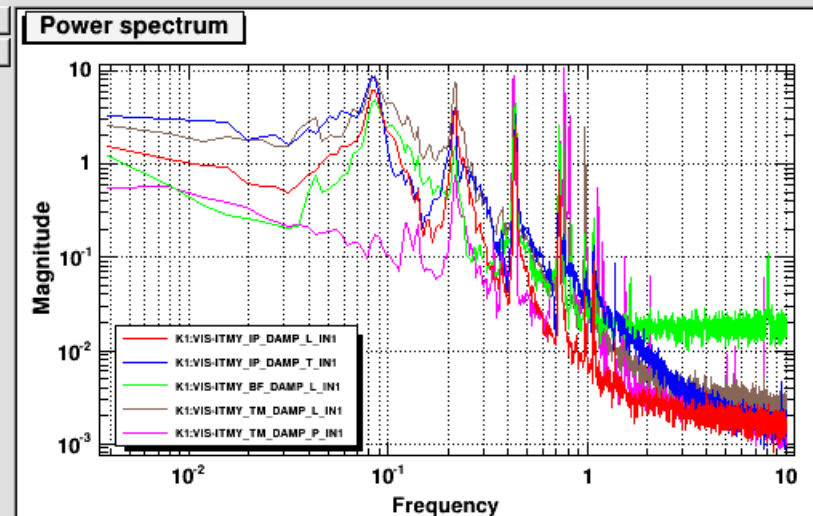
*T0=14/06/2019 03:13:10 *Avg=11 *BW=0.00585937



T0=14/06/2019 03:13:10 Avg=11 BW=0.00585937



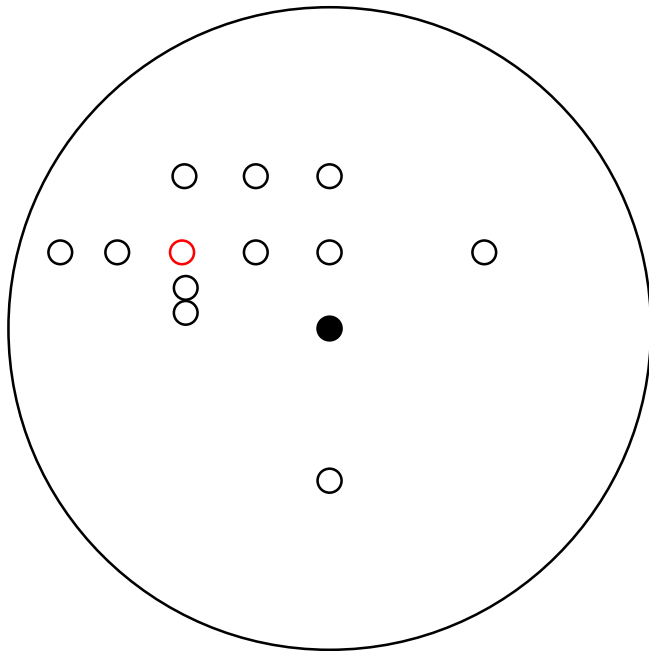
*T0=14/06/2019 02:13:16 *Avg=1



T0=14/06/2019 03:13:10 Avg=11 BW=0.00585937

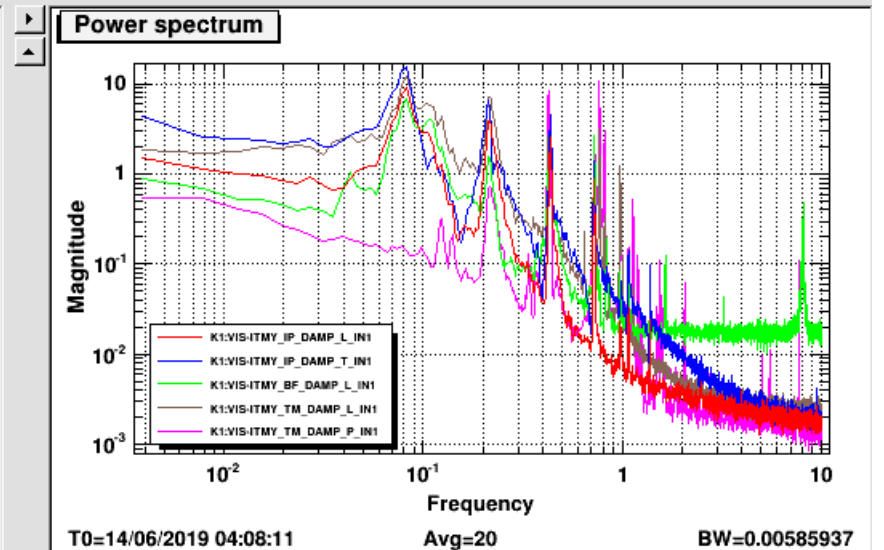
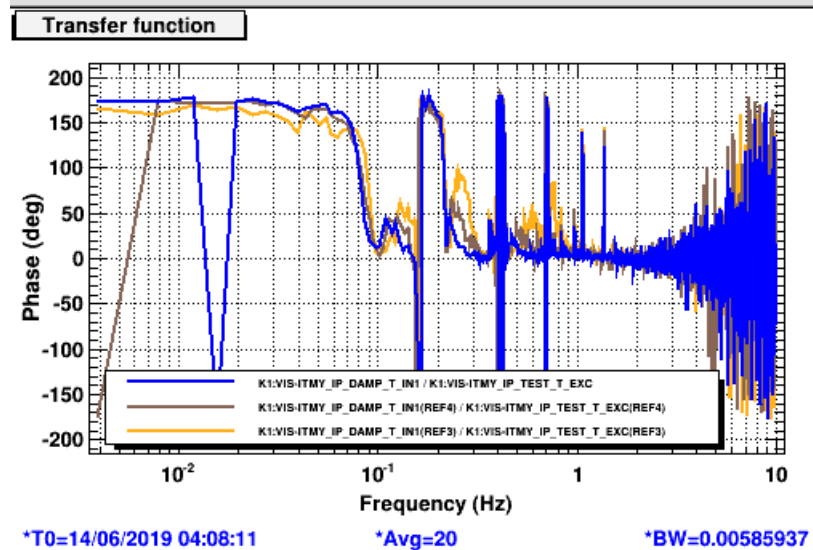
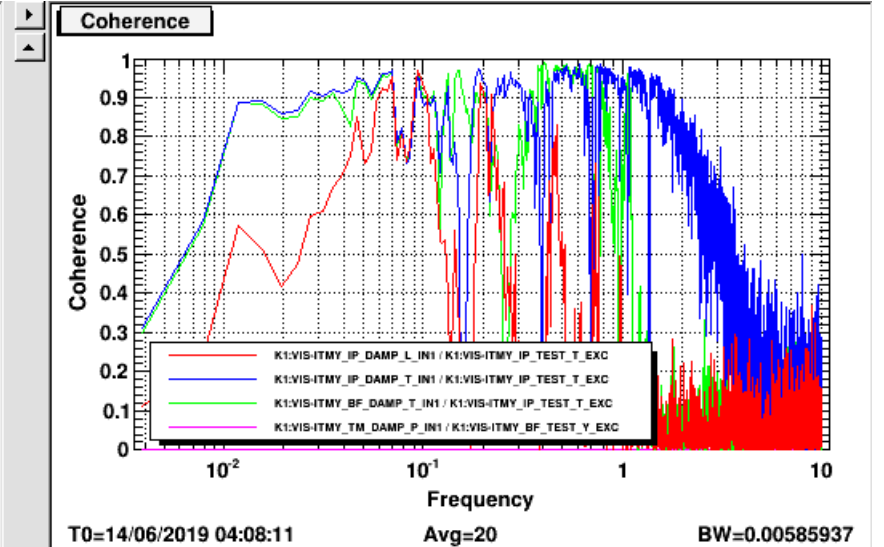
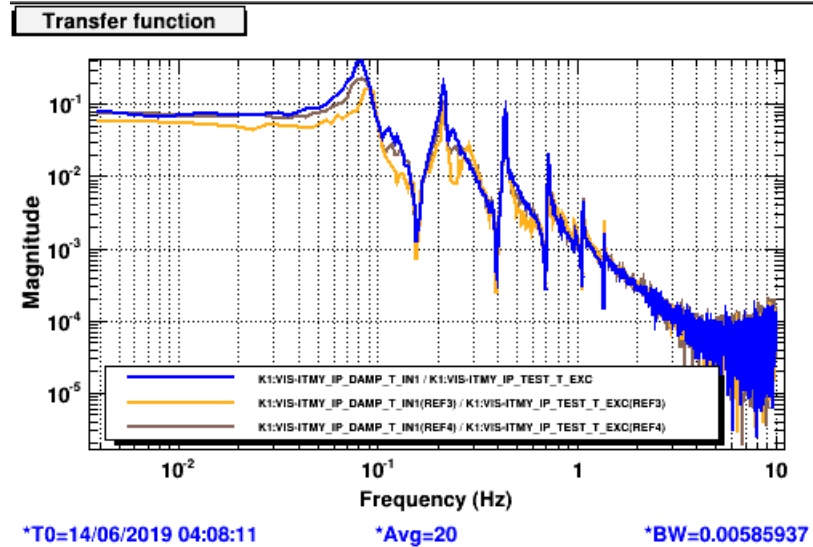
Trial: steering IP in L / T

(K1:VIS-ITMX_IP_DAMP_L_IN, K1:VIS-ITMX_IP_DAMP_T_IN) := (L, T) [um]



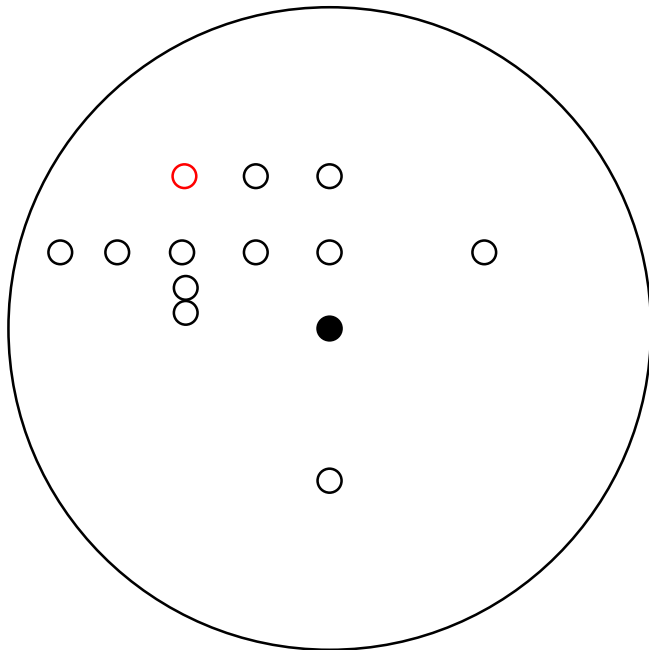
(100, 200)

IPtrans exc
to IPtrans



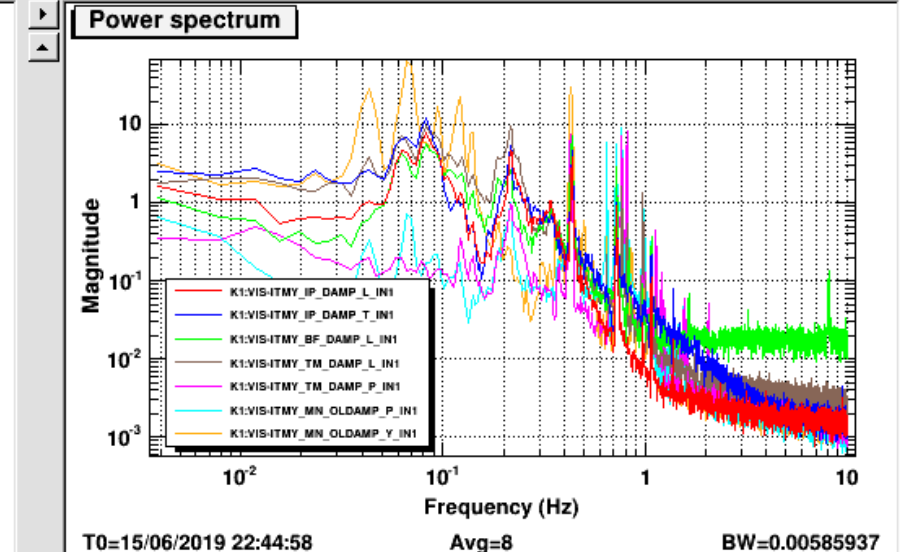
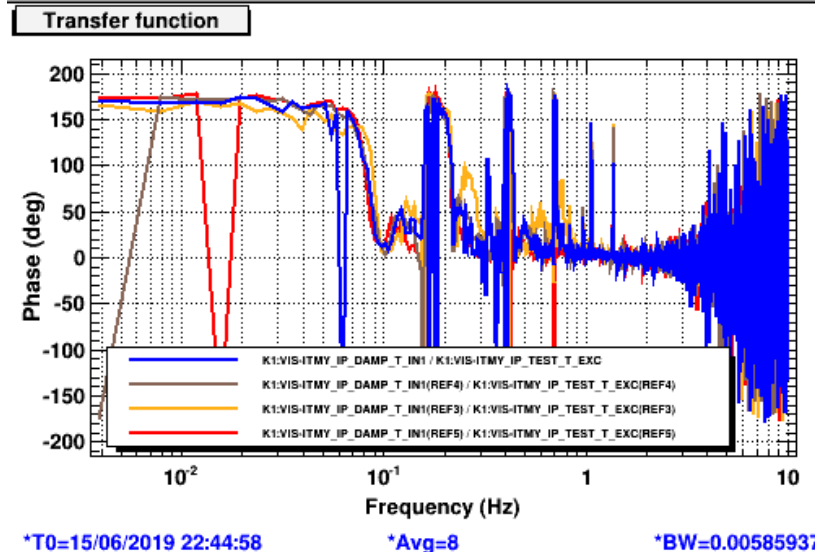
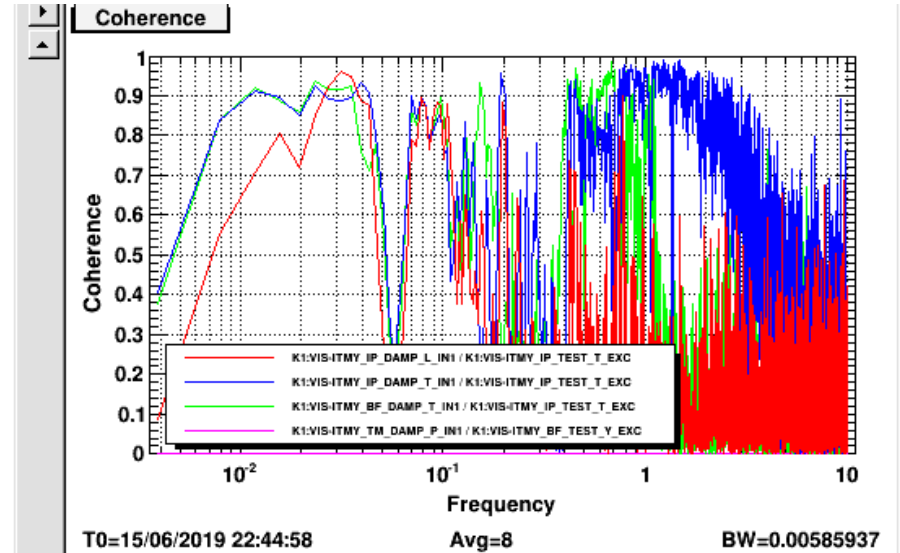
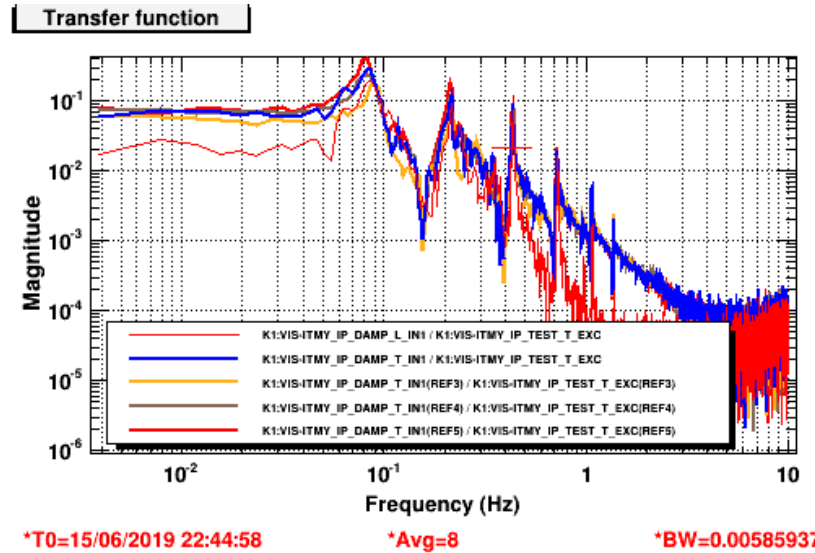
Trial: steering IP in L / T

(K1:VIS-ITMX_IP_DAMP_L_IN, K1:VIS-ITMX_IP_DAMP_T_IN) := (L, T) [um]



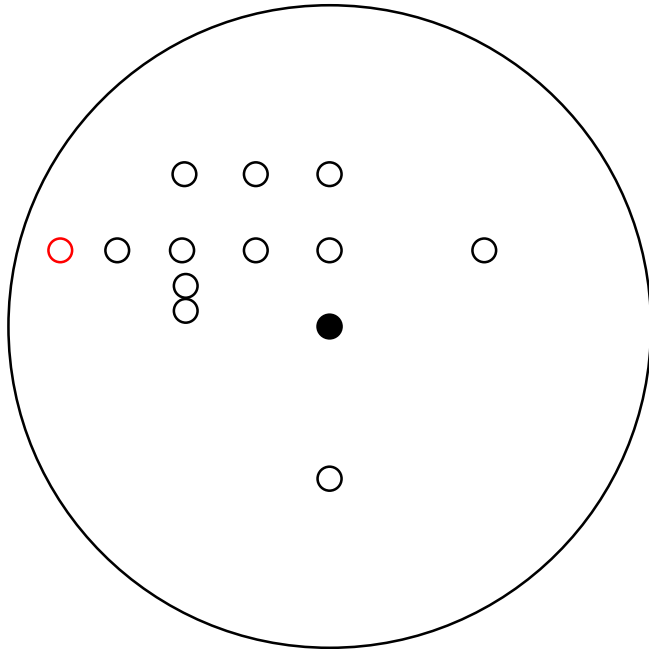
(200, 200)

IPtrans exc
to IPtrans



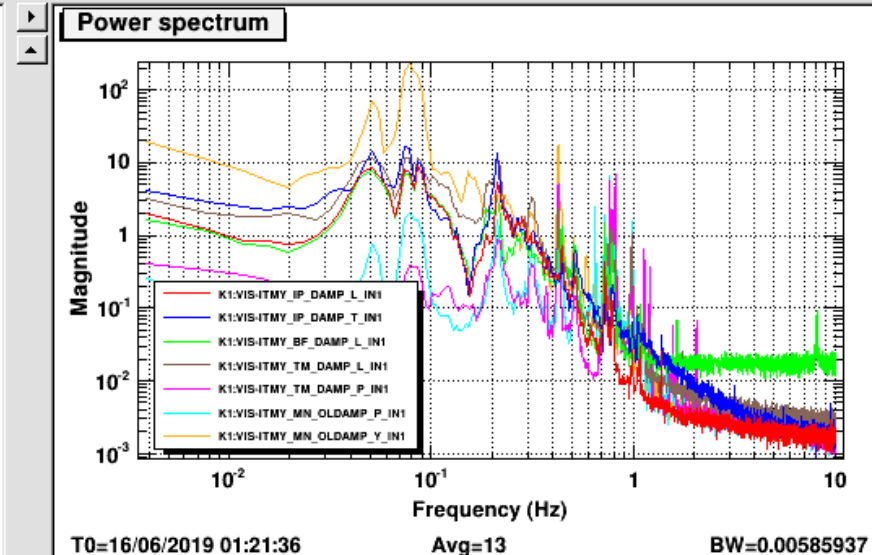
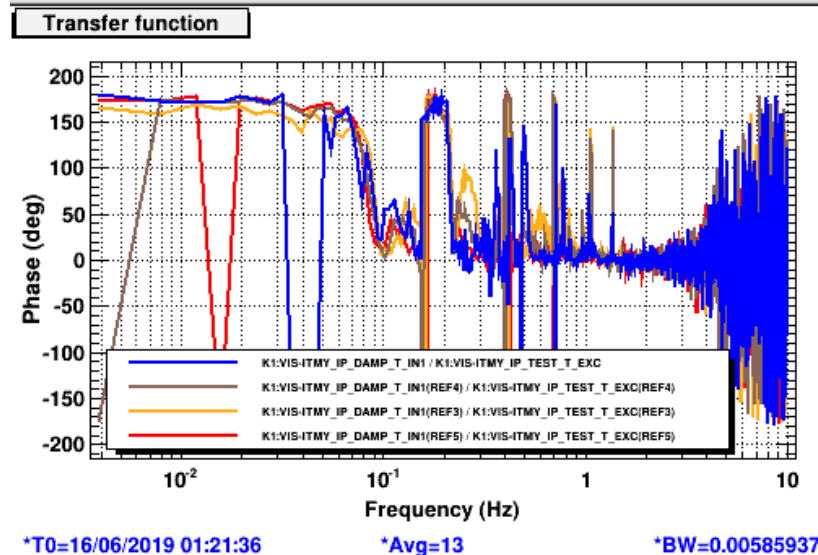
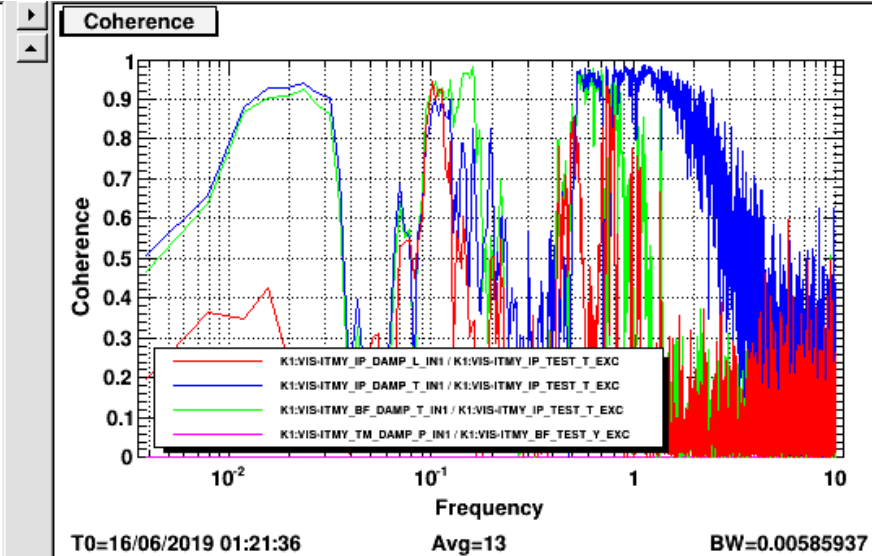
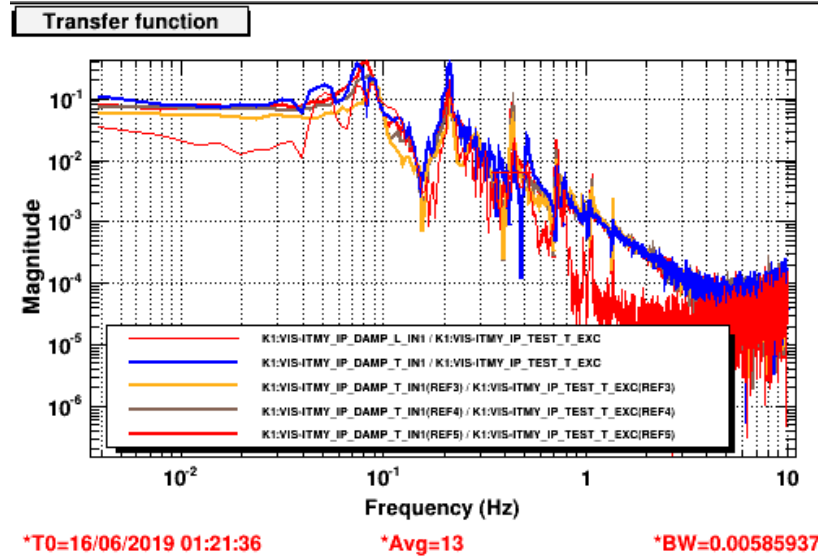
Trial: steering IP in L / T

(K1:VIS-ITMX_IP_DAMP_L_IN, K1:VIS-ITMX_IP_DAMP_T_IN) := (L, T) [um]



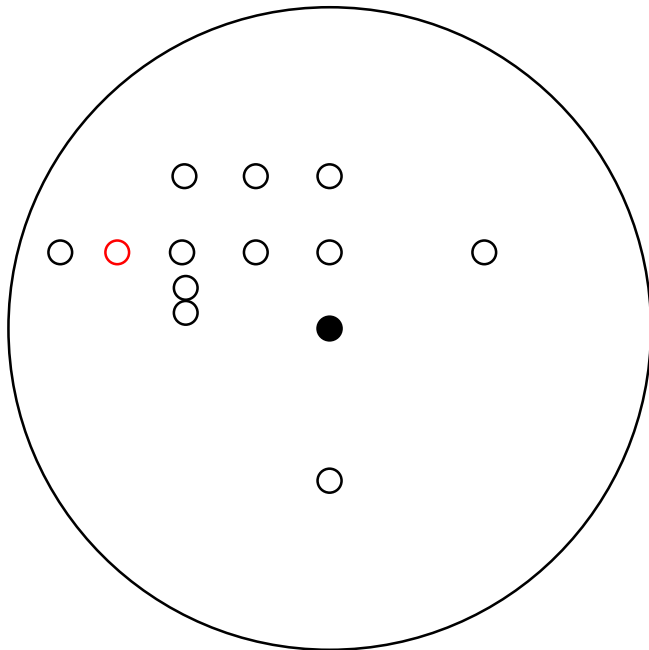
(100, 400)

IPtrans exc
to IPtrans



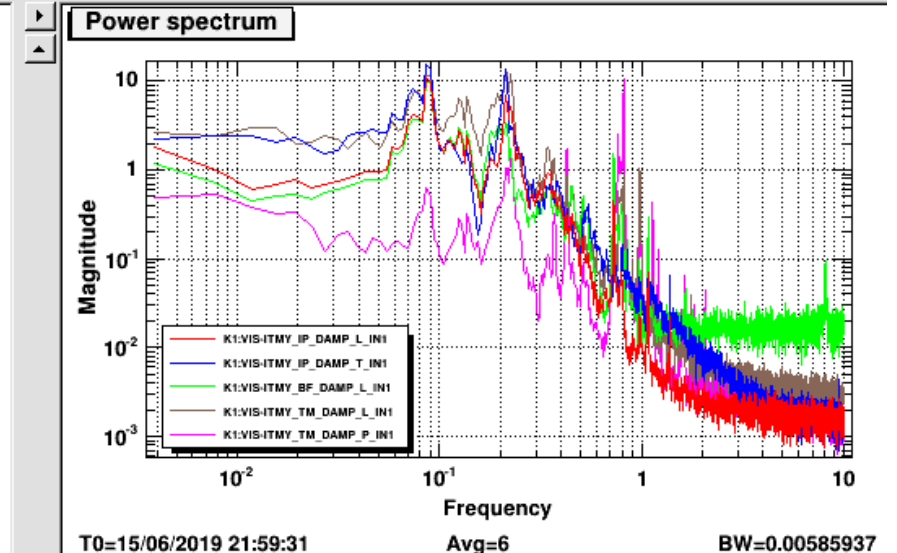
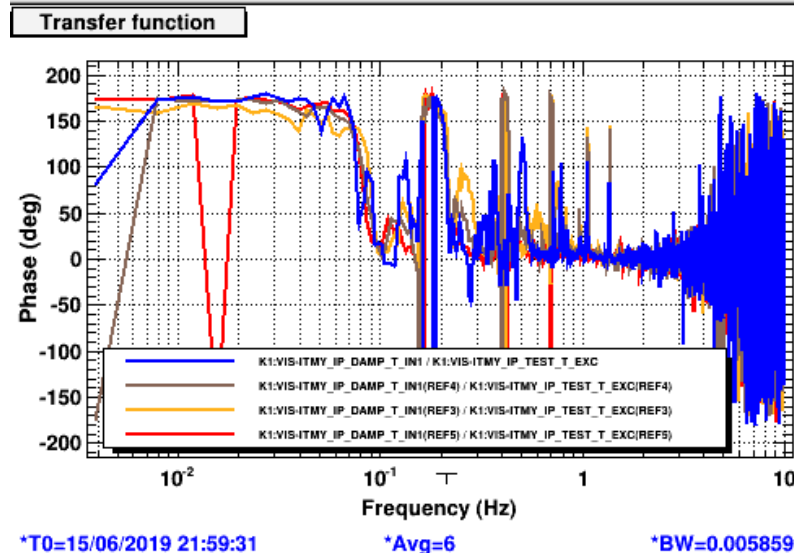
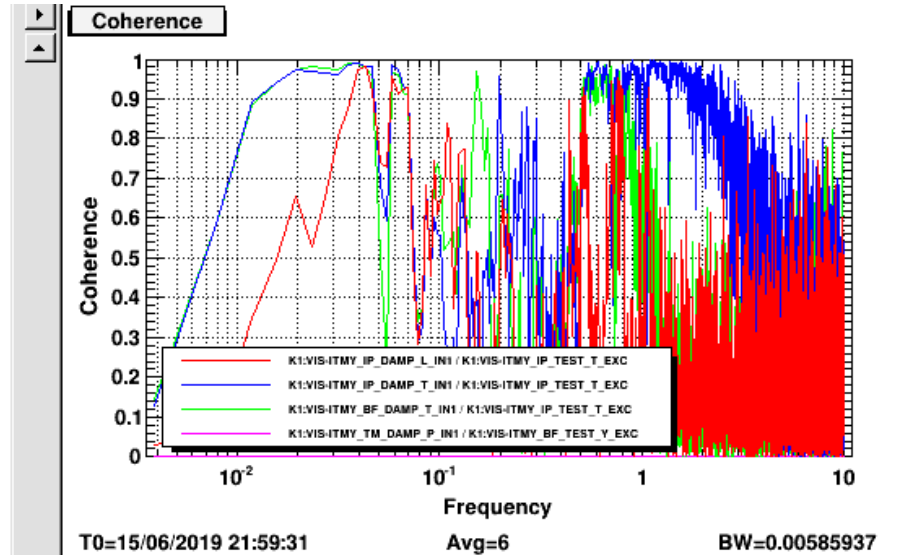
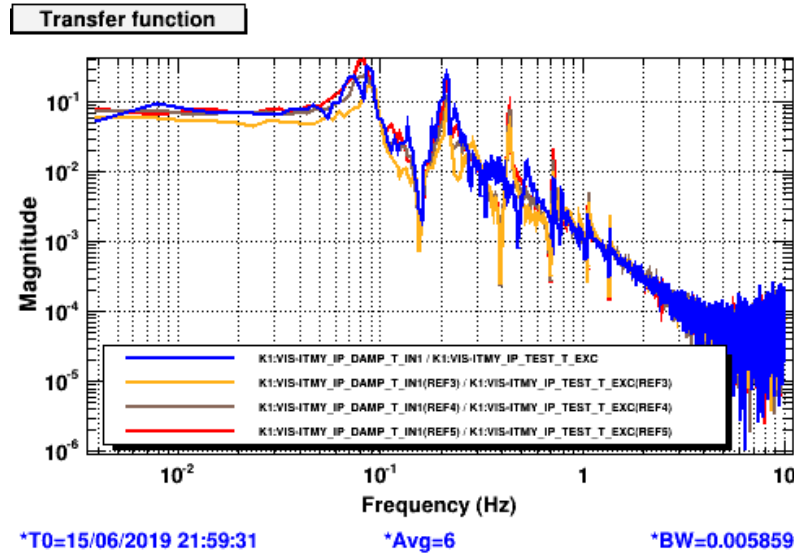
Trial: steering IP in L / T

(K1:VIS-ITMX_IP_DAMP_L_IN, K1:VIS-ITMX_IP_DAMP_T_IN) := (L, T) [um]



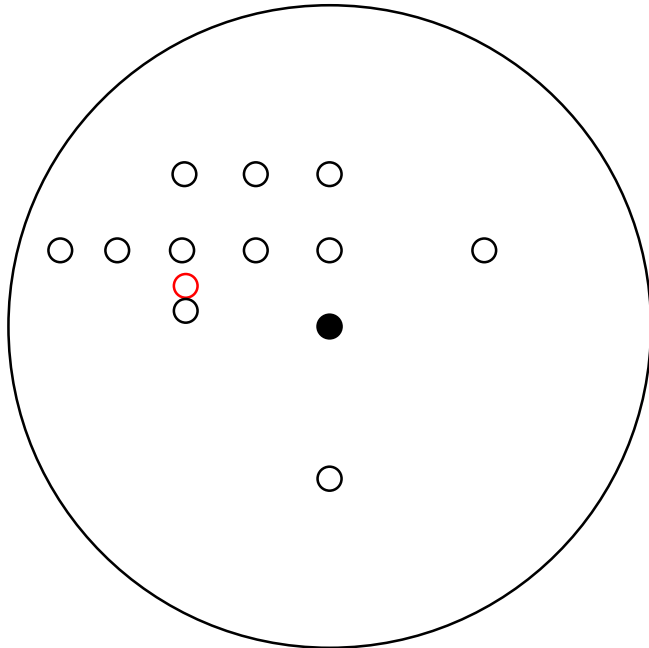
(100, 300)

IPtrans exc
to IPtrans



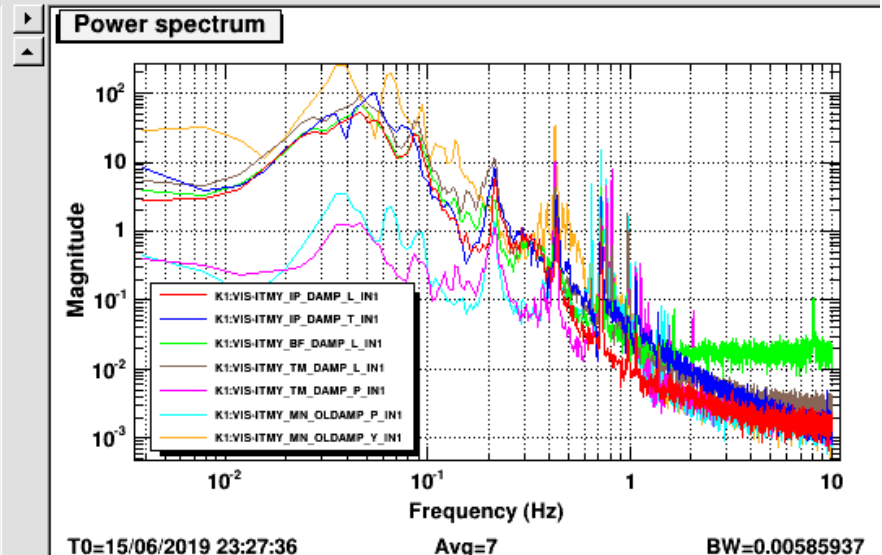
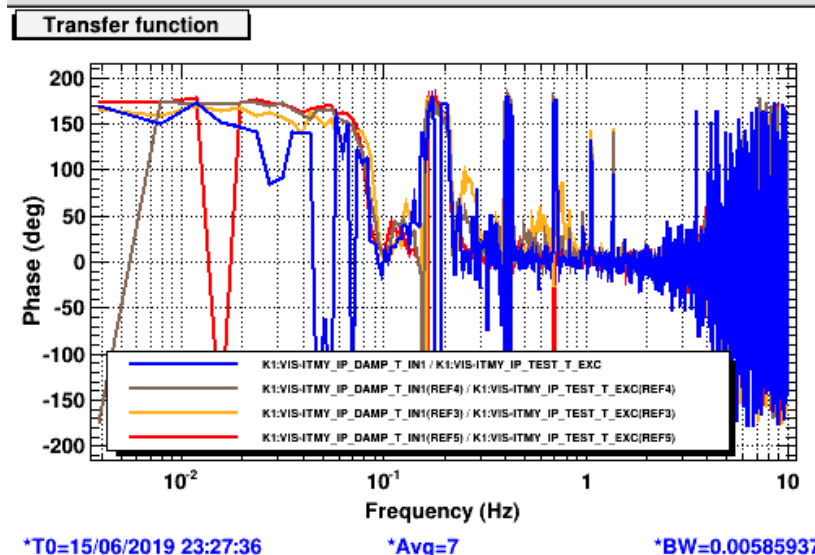
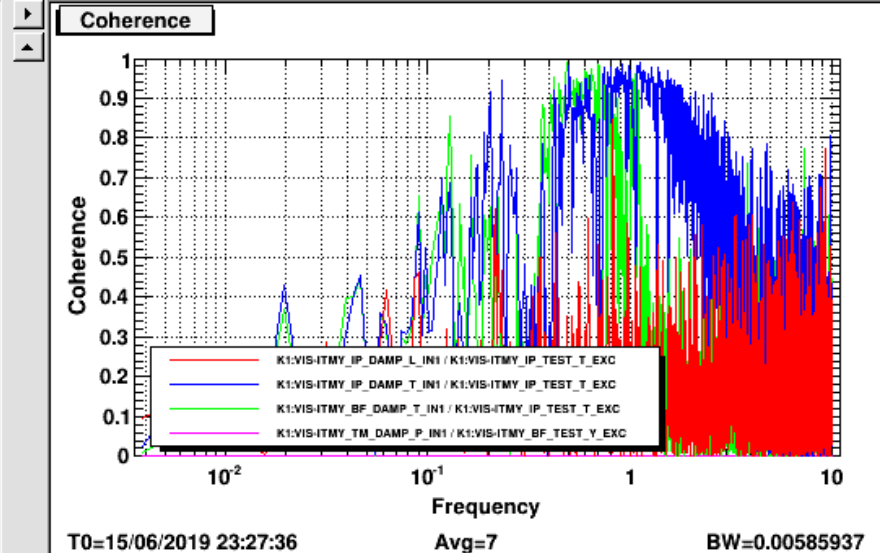
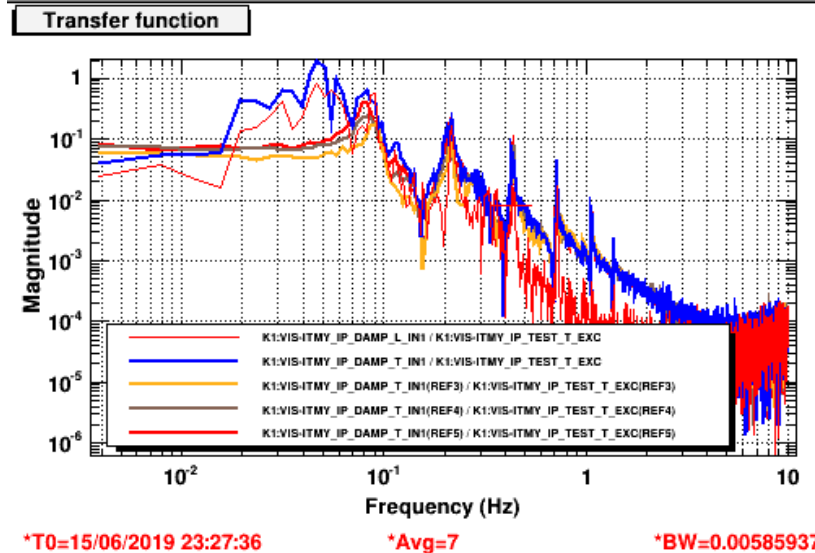
Trial: steering IP in L / T

(K1:VIS-ITMX_IP_DAMP_L_IN, K1:VIS-ITMX_IP_DAMP_T_IN) := (L, T) [um]



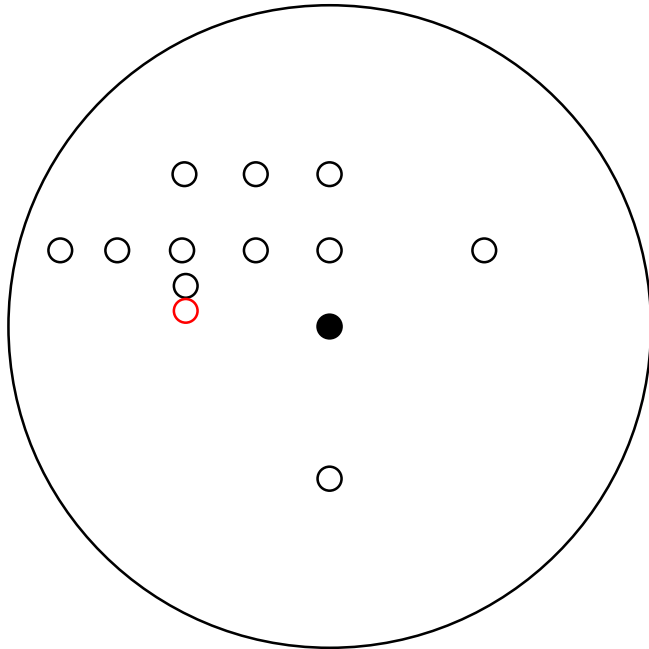
(150, 200)

IPtrans exc
to IPtrans



Trial: steering IP in L / T

(K1:VIS-ITMX_IP_DAMP_L_IN, K1:VIS-ITMX_IP_DAMP_T_IN) := (L, T) [um]



(125, 200)

IPtrans exc
to IPtrans

