

Fscan status

- We installed Fscan and developed daily summary page
- Young-Min modified Fscan suitable for KAGRA system
 - KAGRA don't have segment database (e.g. <https://segments.ligo.org>), therefore we generate segment files every day

Fscan status

K1 ▾ « June 11 2019 ▾ » CAL ▾ CRY ▾ DetChar ▾ DGS ▾ IMC ▾ PCAL ▾ PEM ▾ PSL ▾ VIS ▾ XARM ▾

DetChar : FScan

No analysis was performed for this period, please try again later.

If you believe these data should have been found, please contact **the DetChar group**.

Fscan links:

CAL_PROC

CAV_REFL

CAV_TRANS

FSS_CTR

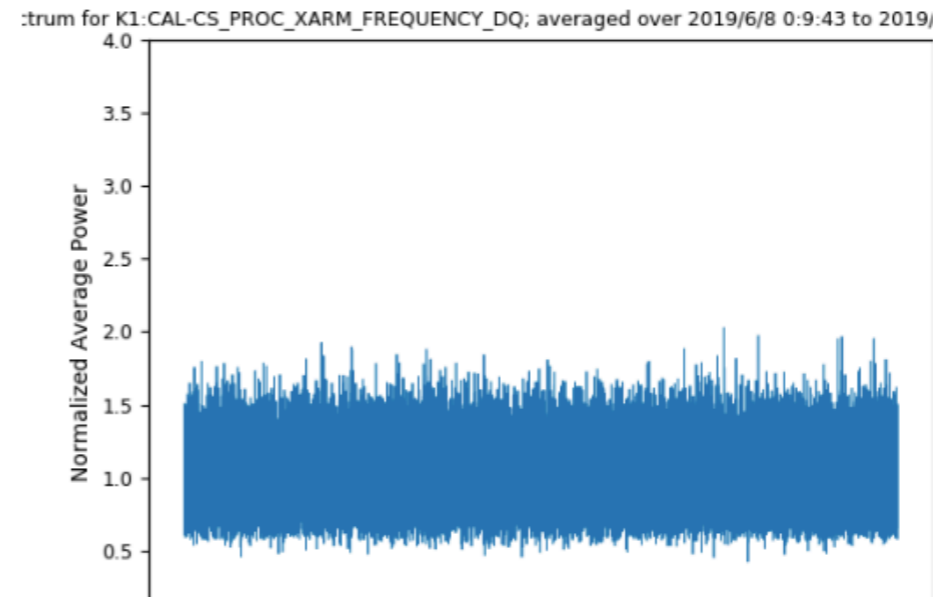
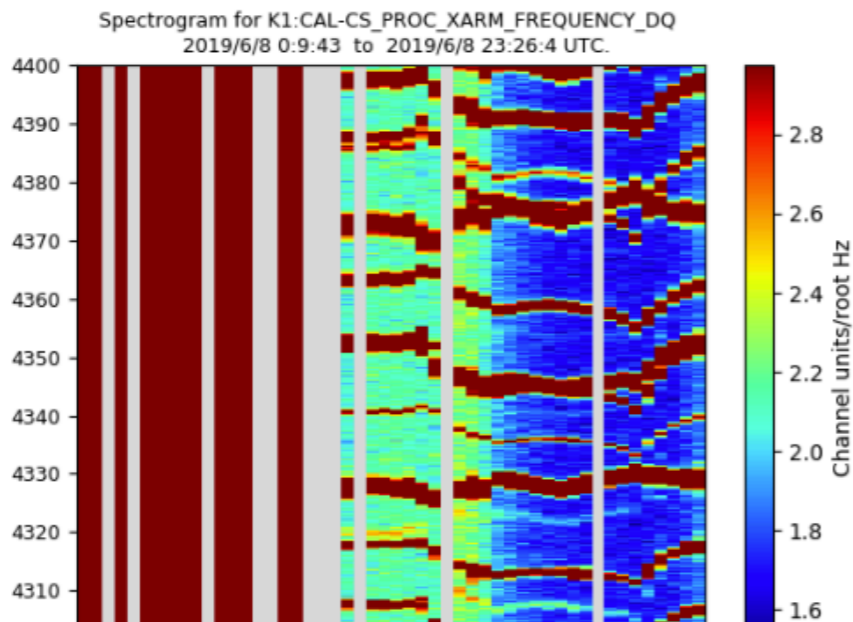
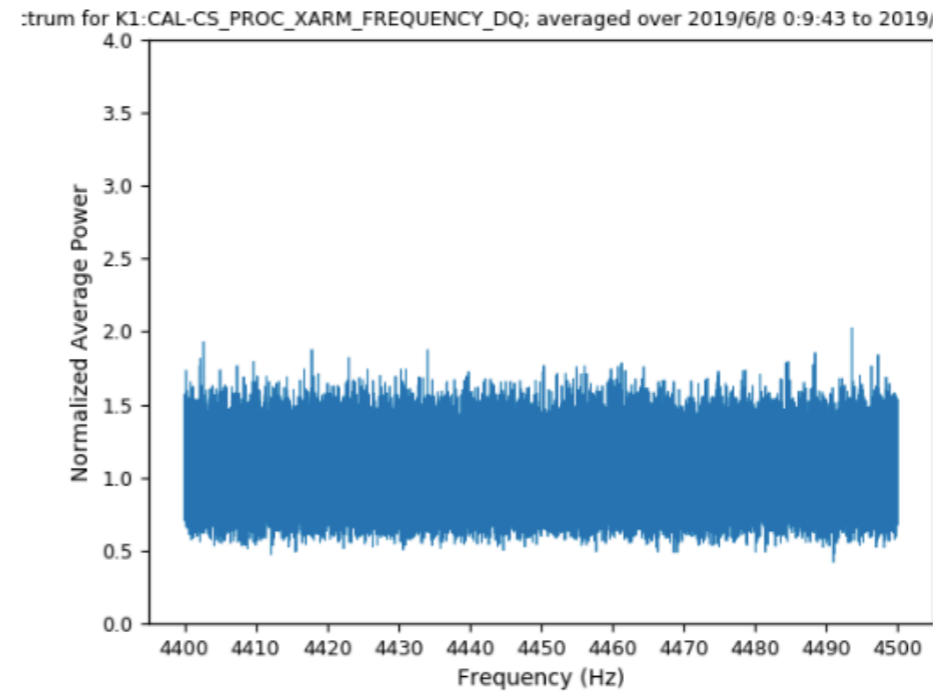
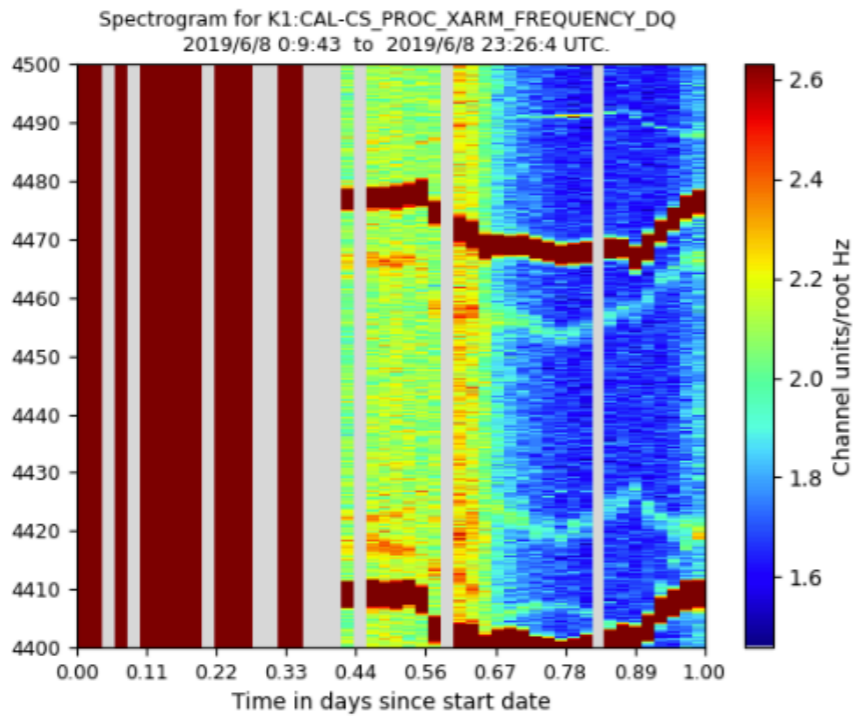
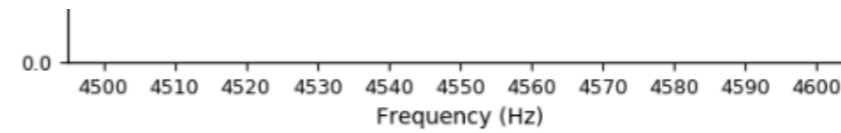
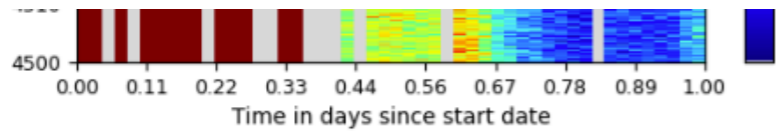
FSS_ERR

IMC_MCL

IMC_SERVO

PMC_ERR

Fscan status



Fscan status

- Toward O3
 - Line finding system : import from LIGO and Virgo
 - Line database