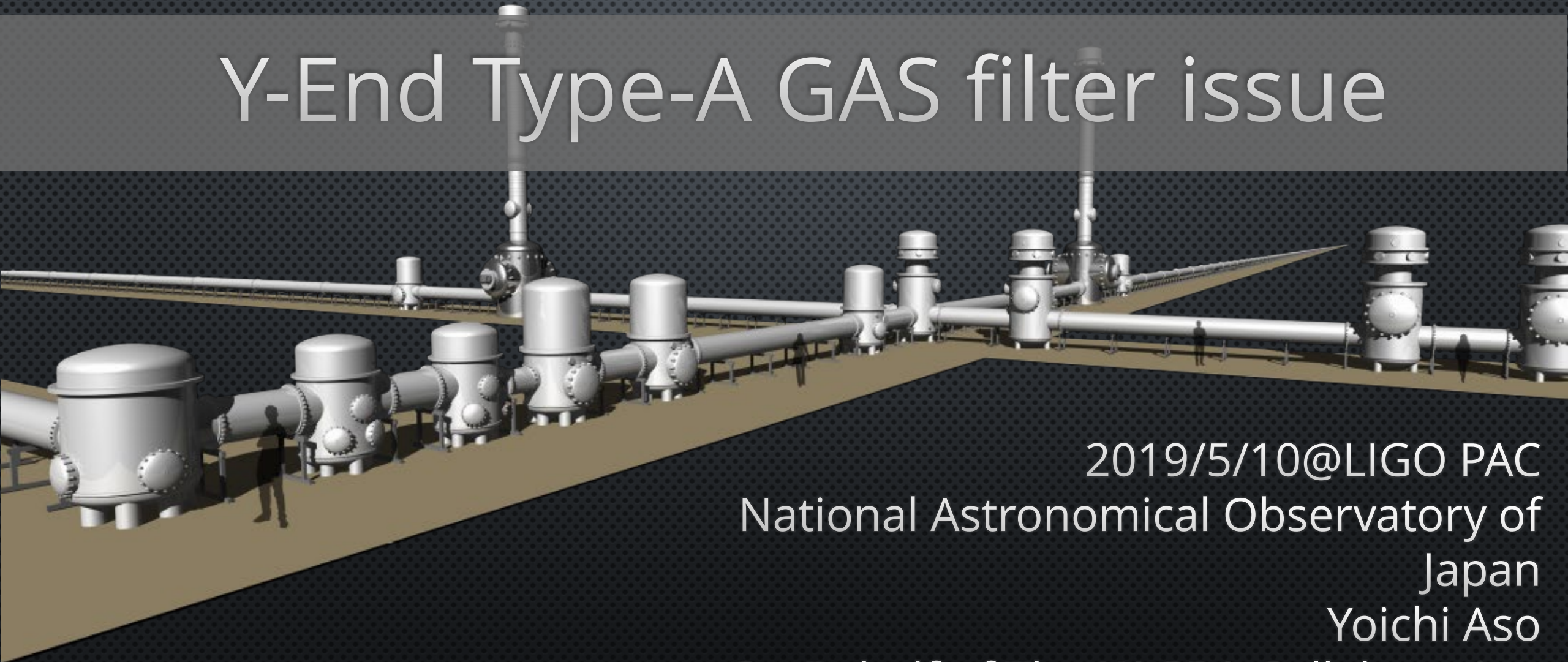
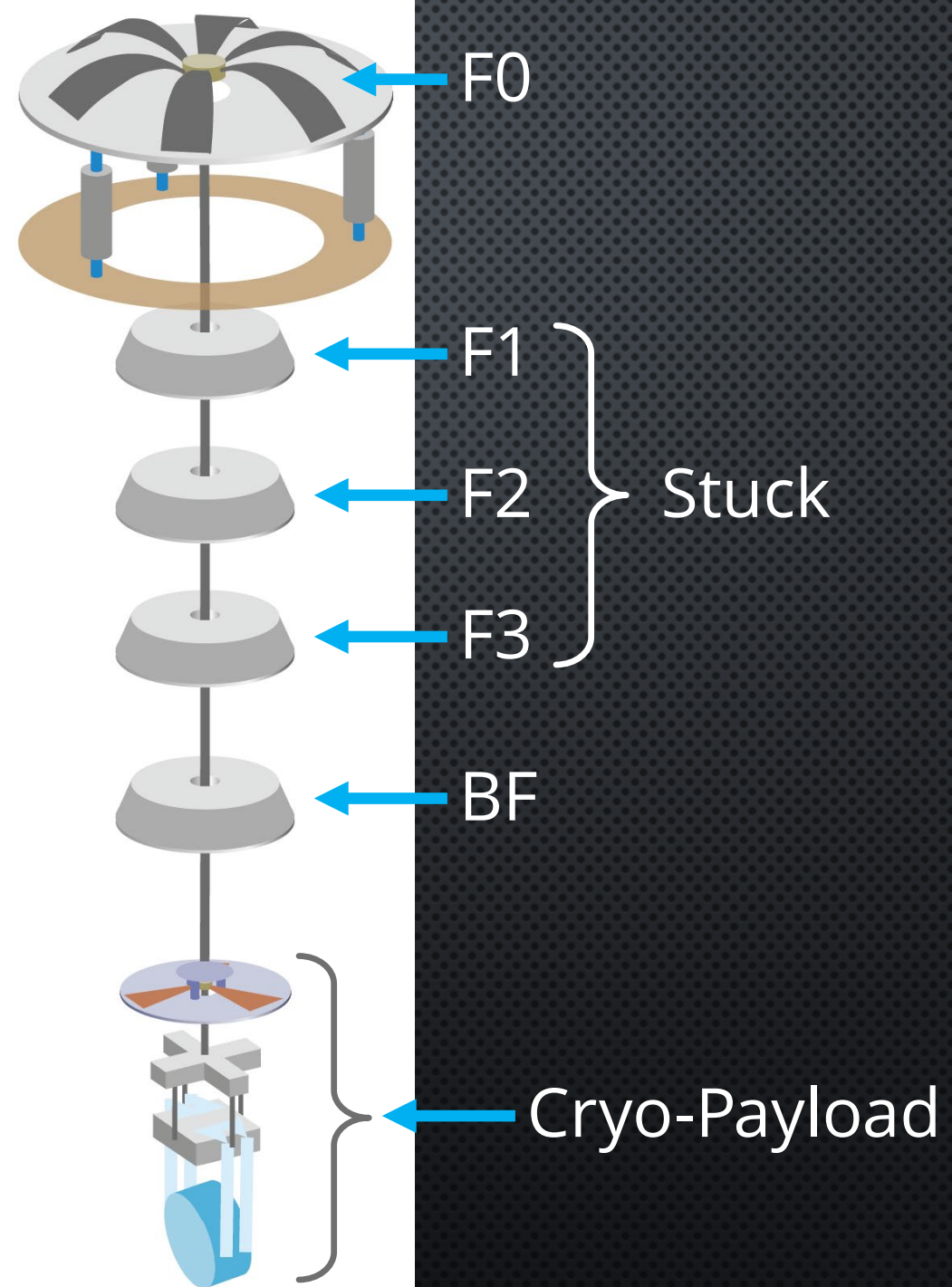


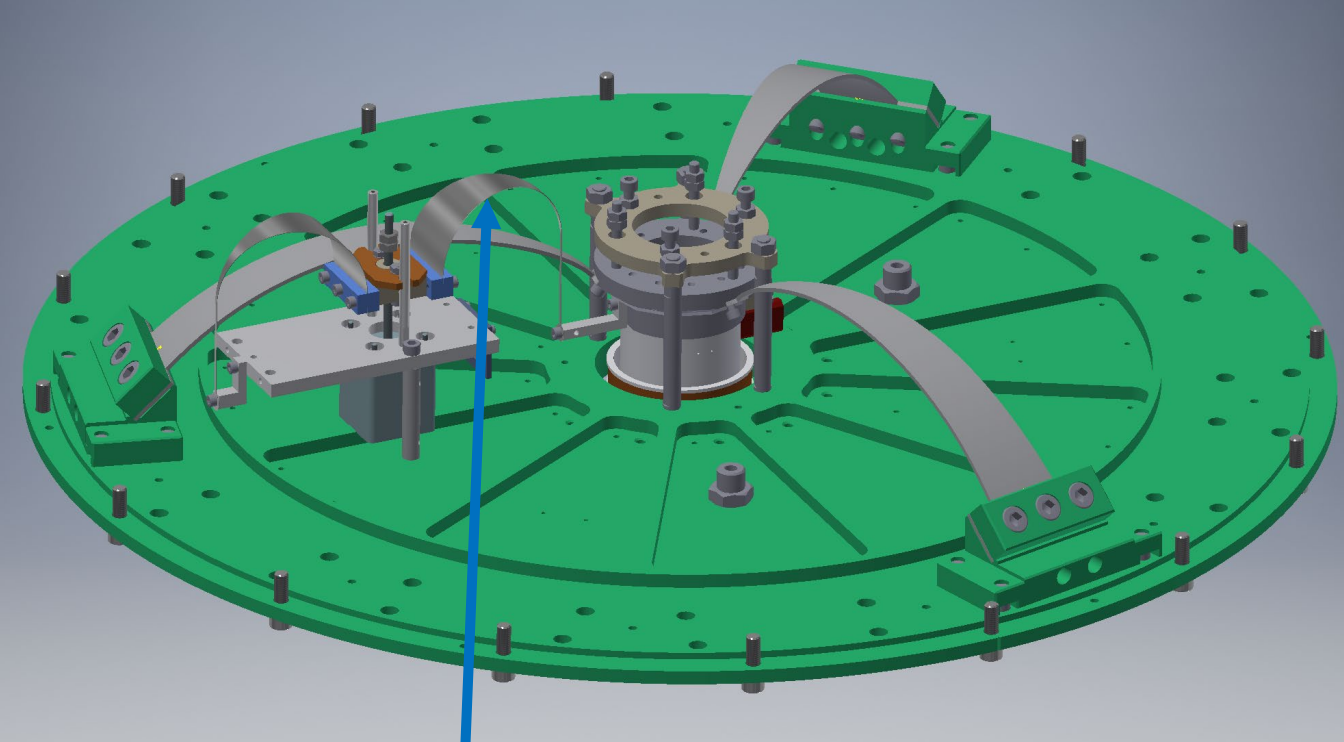
# Y-End Type-A GAS filter issue



2019/5/10@LIGO PAC  
National Astronomical Observatory of  
Japan  
Yoichi Aso  
On Behalf of The KAGRA Collaboration

# Type-A Suspension

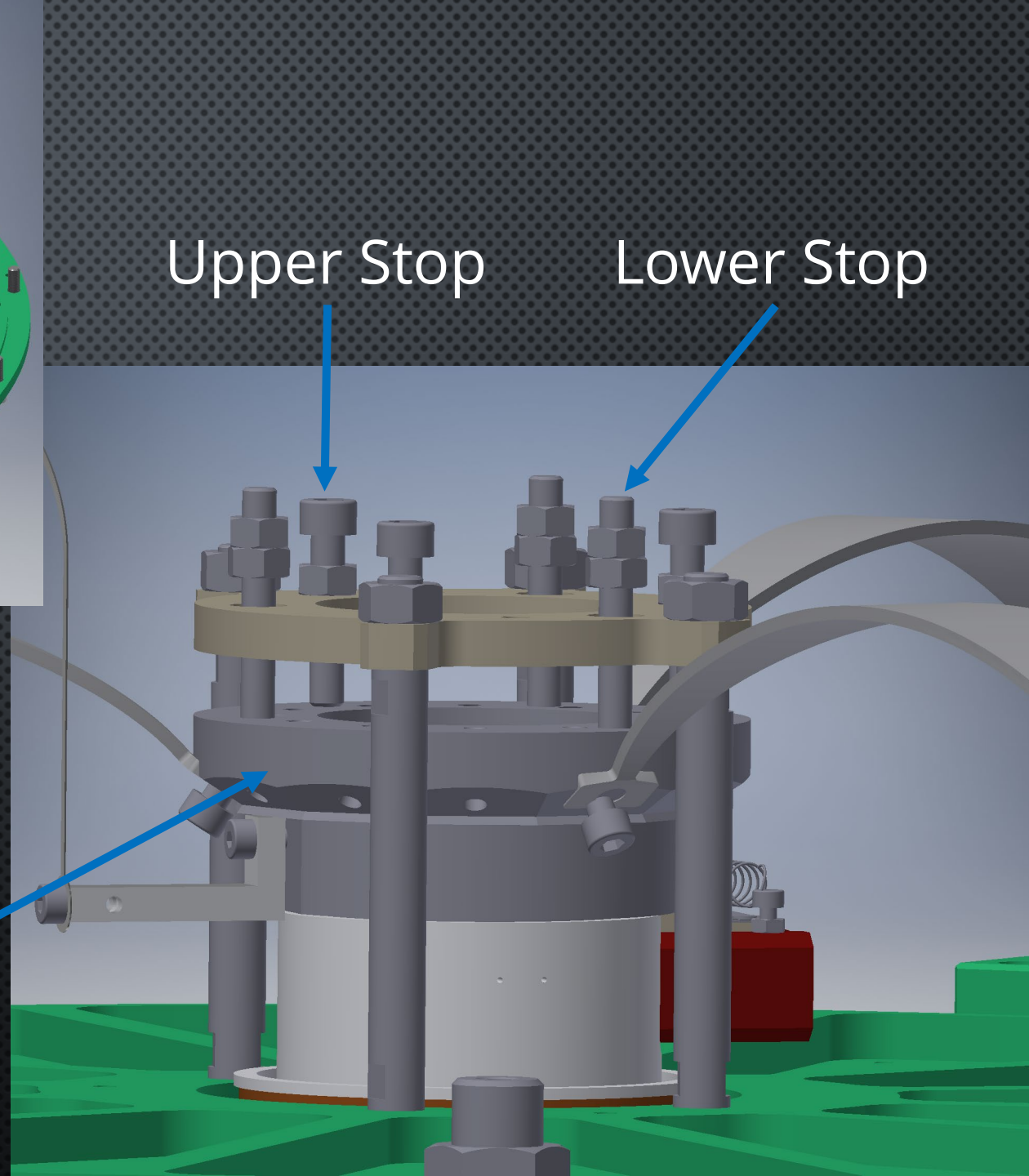




Fishing Rod

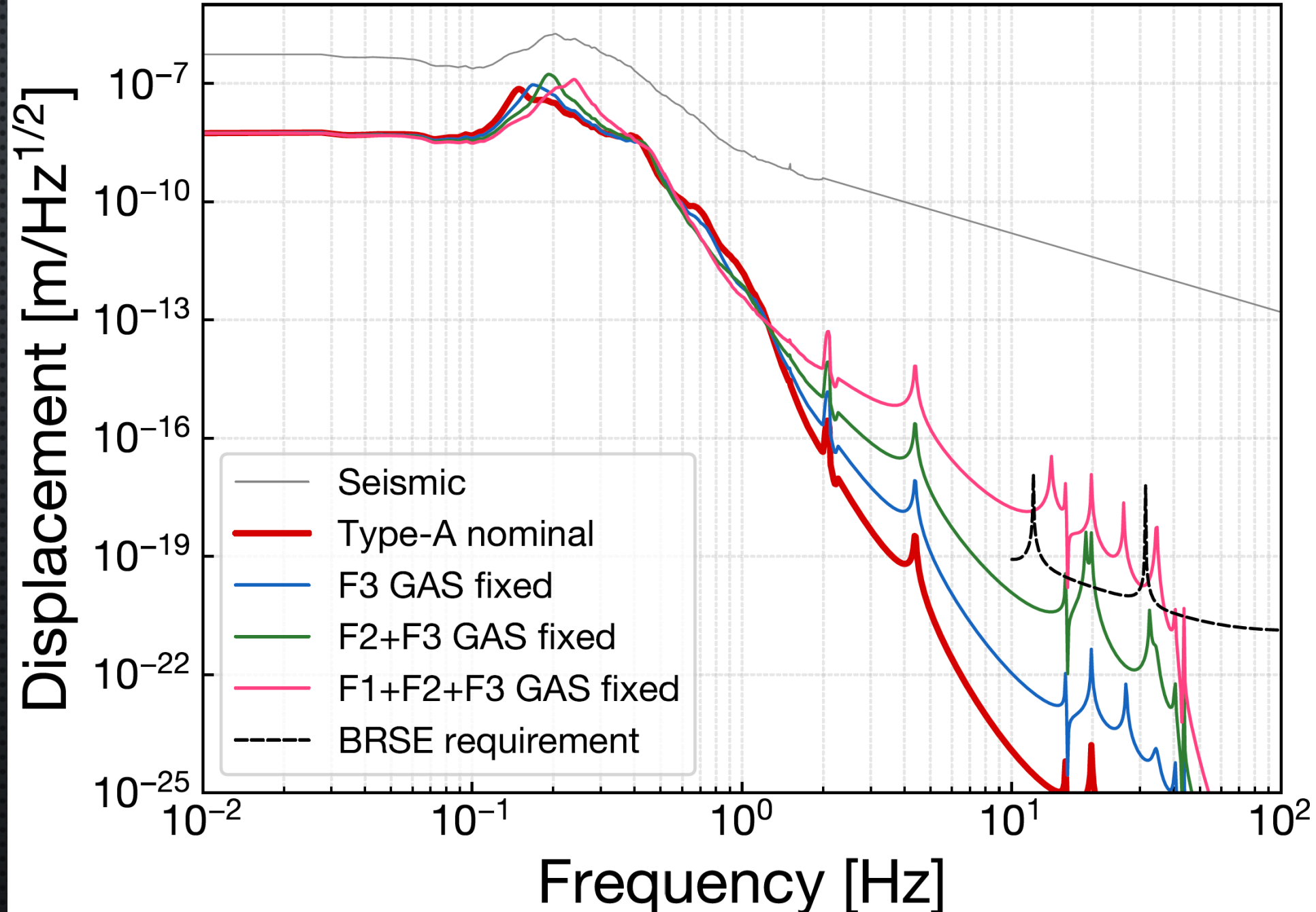
Upper Stop

Lower Stop

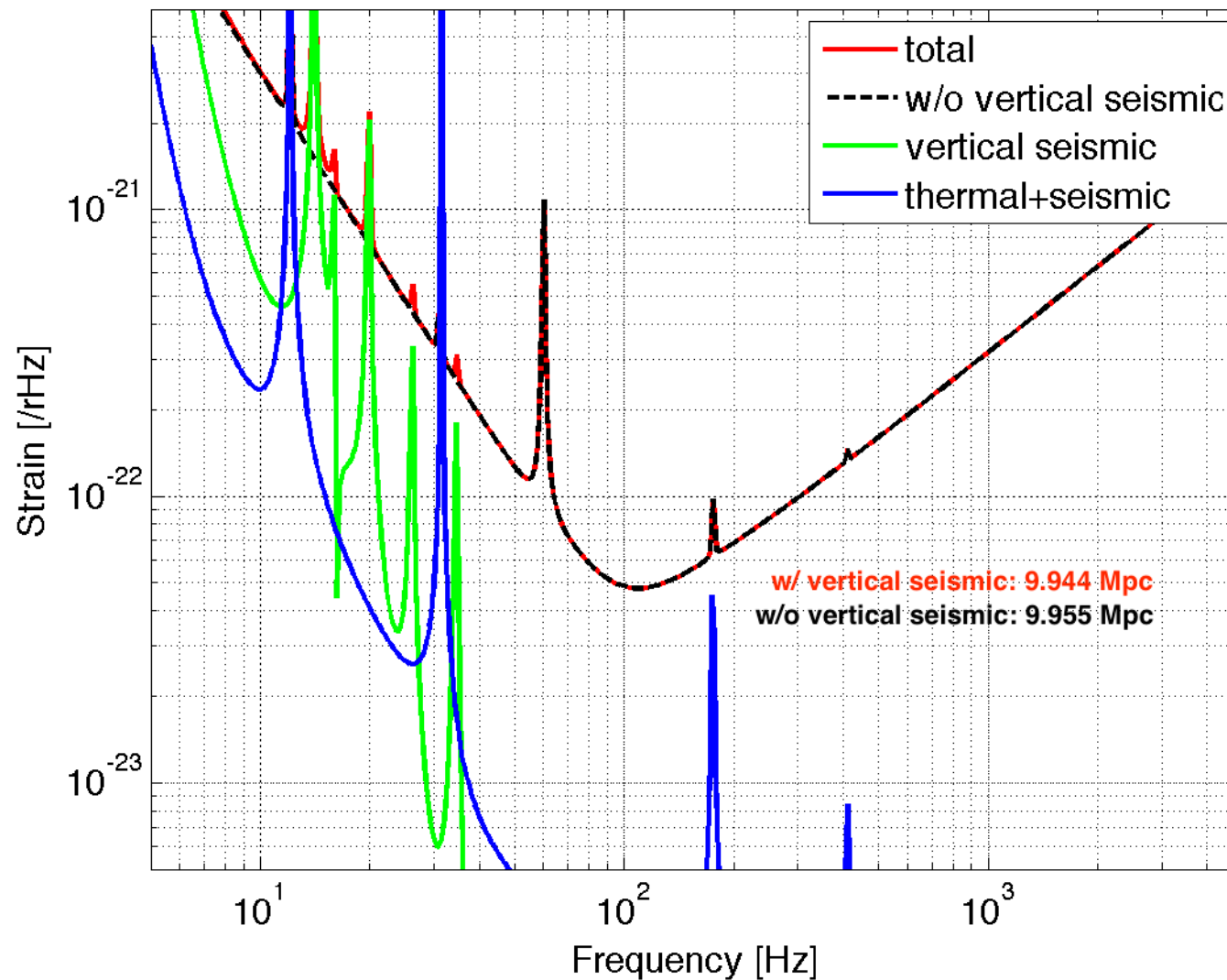


Key Stone

# Seismic noise at Type-A TM (1% vertical coupling)



Input Power: 1W  
SRM Reflectivity: 0%  
Excess Noise: (aLIGO O1)x12



Input Power: 10W  
SRM Reflectivity: 70%  
Excess Noise: (aLIGO O1)x4  
= aVirgo O2

