



OMMT1

OMMT2

OSTM

Current status of
OMMT/OSTM

Naoko Ohishi Nov. 26th 2010

Type-C works in 2018:

- **Apr:** Design
- **May:** **MCo** visual inspection
- **Jun-Jul:** **IMMT1/2** IM screws changed
- **Aug:** Ordered mechanical parts (OMMT)
- **Sep:** Ordered remaining parts (OSTM)
- From the mid **Oct:** started work in the tunnel
 - 2 weeks for **OSEM test** with help from four B4 students of Toyama University;
Kaihotsu-san, Mori-san, Ito-san and Kuromiya-san (2 days each)
and **Mark-san, Yamamoto-san, Kokeyama-san** about digital system
and great help from **K. Arai-san** (3days).

tested 17 OSEMs

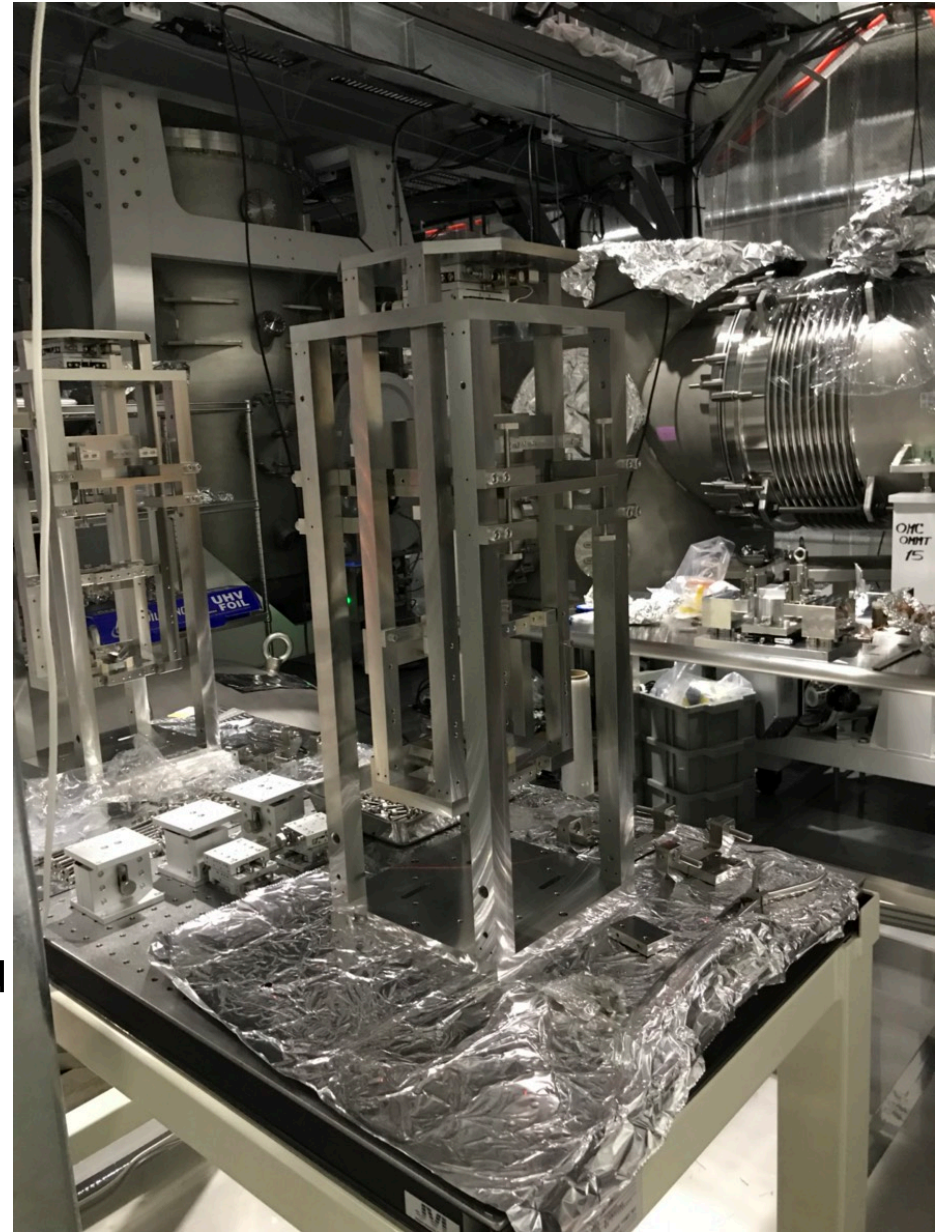
- Results:
- http://klog.icrr.u-tokyo.ac.jp/osl/uploads/6828_20181102130917_characteristics_of_sem.pdf
- <http://klog.icrr.u-tokyo.ac.jp/osl/?r=7074>

- In addition, **Ito-san and Shimizu-san**(Mirapro)helped cabling

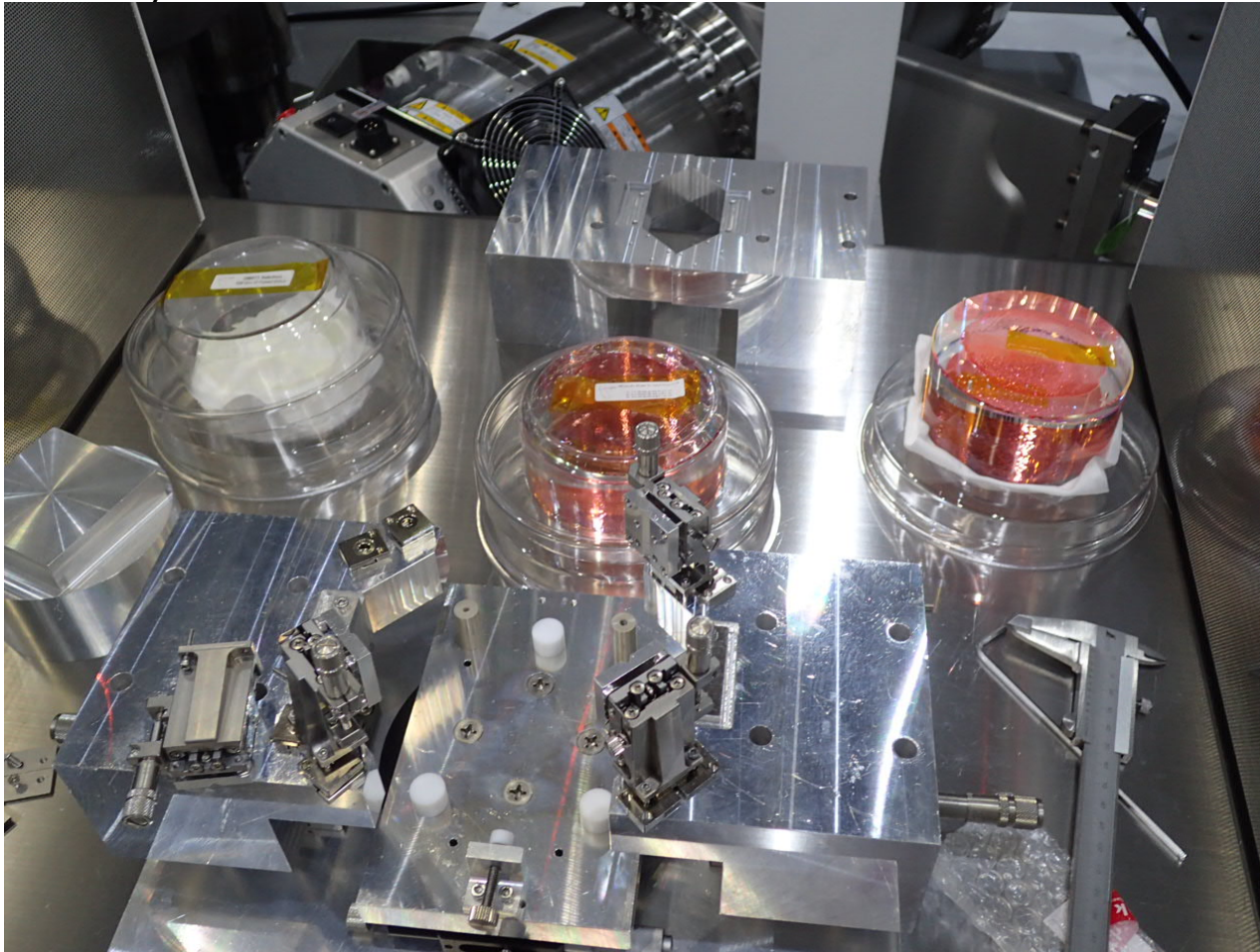


From 5th to 14th Nov :
Assembled
mechanical parts

- **Horio-san**(B4) and **Tsuda-san**(M1) came from Tohoku-gakuin university.
- They assembled mechanical parts and set tungsten wires.
- We found some problems. **Samejima-san**(MESCO) repaired them really quickly but we still needed to reproduce two kind of mechanical parts to finish assembly.



In parallel, glued standoff and magnets on OMMT1/2 mirrors.

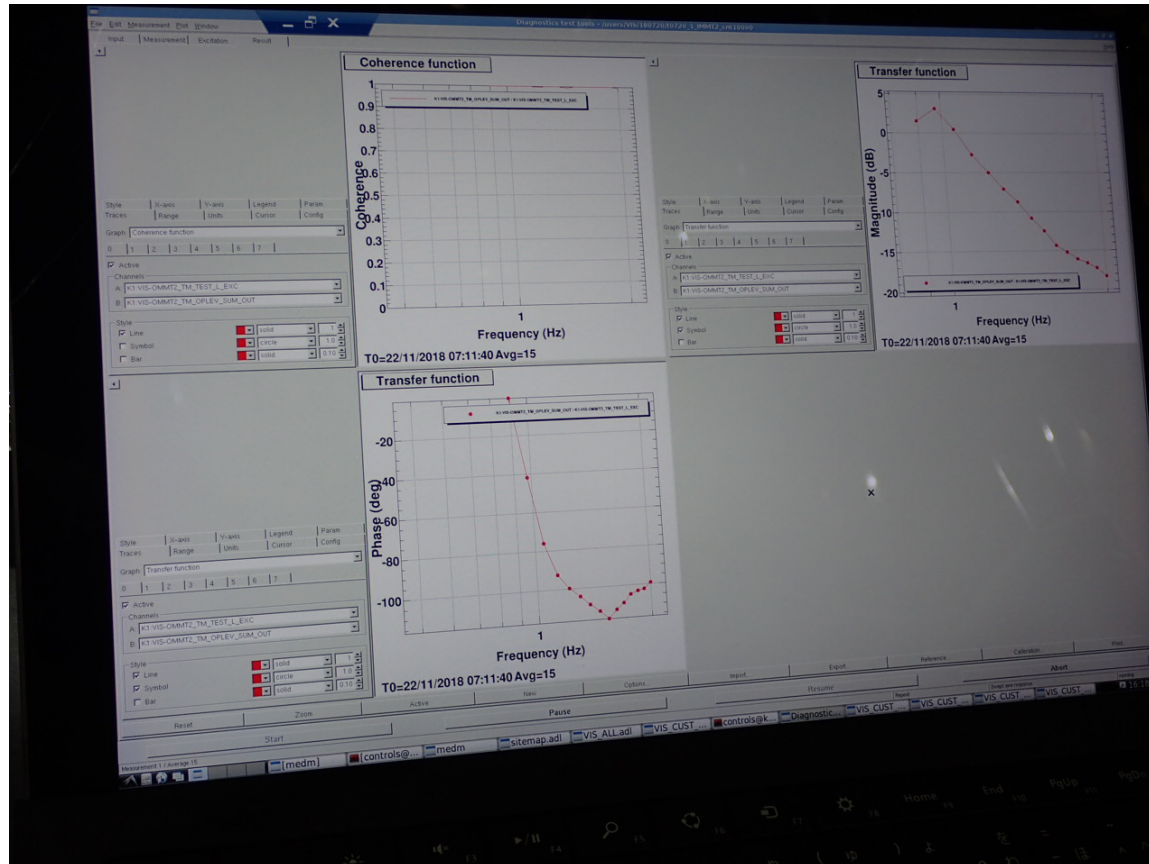


Last week(19th-22th) OMMT1 assembled

- All the parts came on Monday.
- **Ito-san**(21, 22th) and **Kaihotsu-san**(22 and 23th) came to help.
- **R. Takahashi-san** also joined from Wed(30min) and Thu.
- **Miyakawa-san** helped to make OSTM model.
- So we completed assembly and took transfer function.



OMMT1 transfer function



This week:

- Mori-san (Tue, Wed), and Kuromiya-san(Thu, Fri) will come.
 - Tsuda-san, and Horio-san will work on Tue, Wed and Thu.
 - I hope that R. Takahashi-san also joins us.
-
- Remaining works:
 - OSTM glueing
 - OMMT2, and OSTM assembly (half a day for each)
 - Transfer Function measurement...
 - Lock, install and release in the vacuum chamber.

Next week

- Peel first contact away and finish.

Status Summary

- OMMT1 transfer function measured outside the vacuum.
- Check TF in Tue and Install in Wed.
- OMMT2 will be assembled(Tue; Tsuda-san, Horio-san) and will measure TF.
- Installation (Thu).
- OSTM glueing(Ohishi), set in suspension in Wed(R. Takahashi-san),
measure TF on Thu(Kuromimya-san)
- Installation (Fri).