

# Status of KAGRA Detector

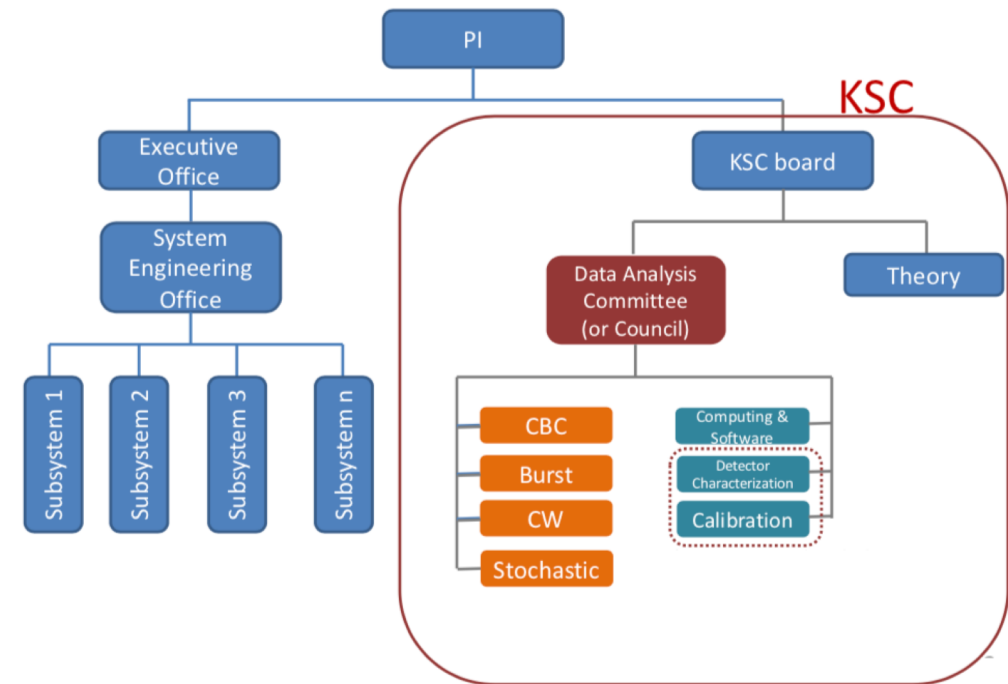
# KAGRA Detchar Organization

## Re-organize data analysis group in KAGRA

- Being re-organized and a bit messy at this moment
- No remote detchar people coming to the site – what the best style to be useful?

- We reorganized the data analysis group in KAGRA.
- Data analysis group moves under the KSC (KAGRA Scientific Congress).
- Working groups are organized **as corresponding to LV data analysis groups** for near future cooperation.

### New organization structure of KAGRA



# Current Detchar Tools being Used

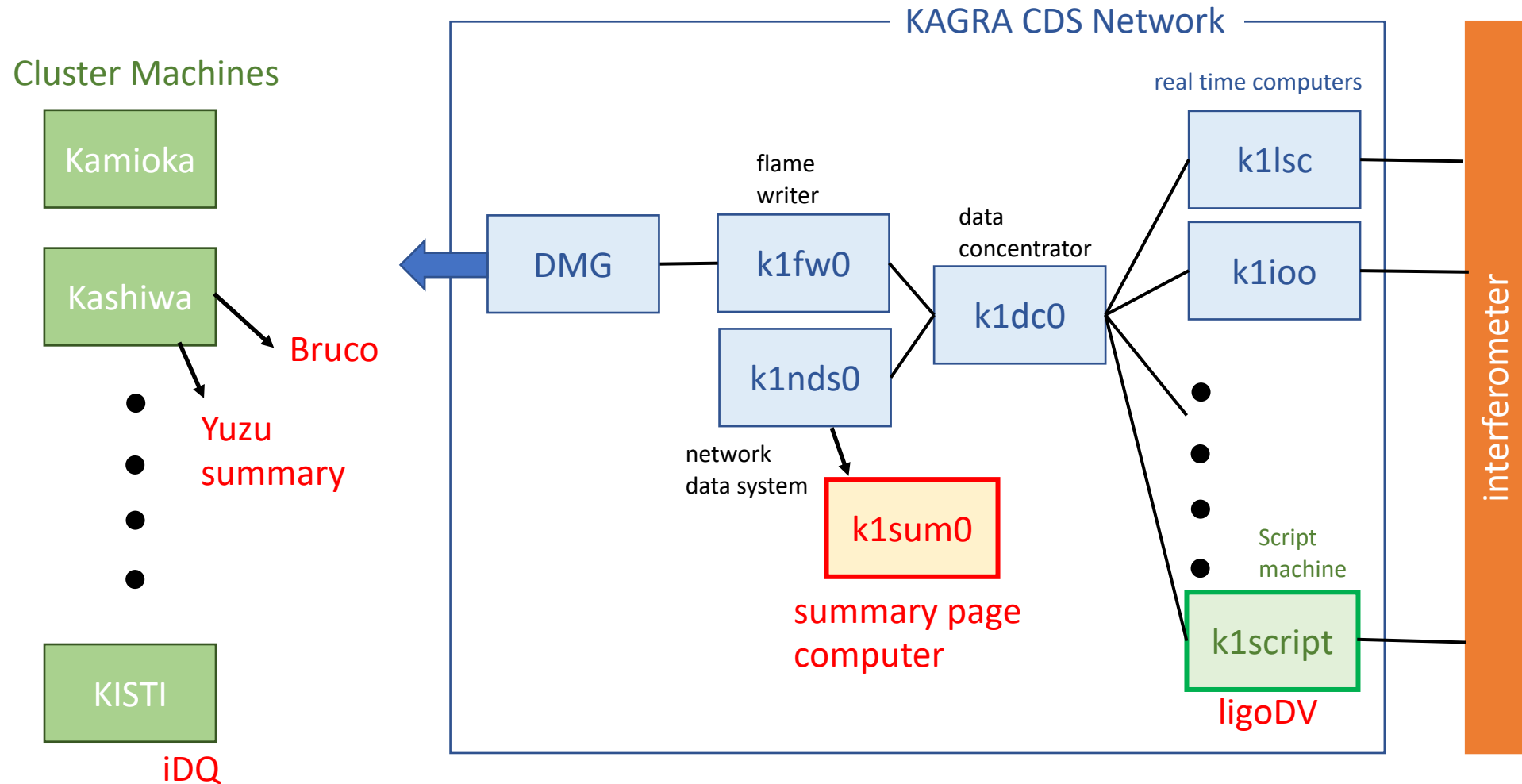
## What we have

- ligoDV
- LIGO Summary Pages
- Yuzu Summary Pages
- Bruco
- Simulink Noise budget
- iDQ is available through Korean team But has a large latency (~1hour)

## We haven't got...

- Line finding tools
- Glitch search tools
  - omicron, omega, KW
- Veto tools
- **No NDS2**
- What else do we need?

# Current Detchar Tool Map



# How to Create Online Data Quality Flags and Detchar database in KAGRA?

- We have no DMT
- What functions do we need
- What kind of flags do we need
  - Same categories as LIGO's?
- Do we go for DMT or not?
  - Develop something simpler using a real time system? ODC?
  - Import DMT? (can we fully use and maintain?)
  - No online DQ??
- What kind of Detchar database?
  - Needs to be shared with LV?

# Current PEM Map

- See Yokozawa-san's slides

# KAGRA Schedule

Uchiyama,  
JGW-G1808564-v1

