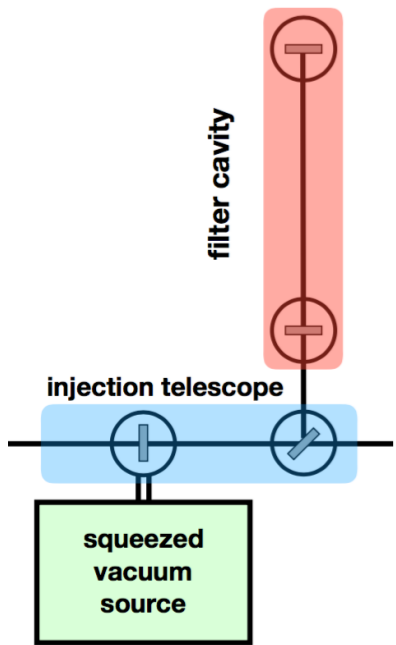
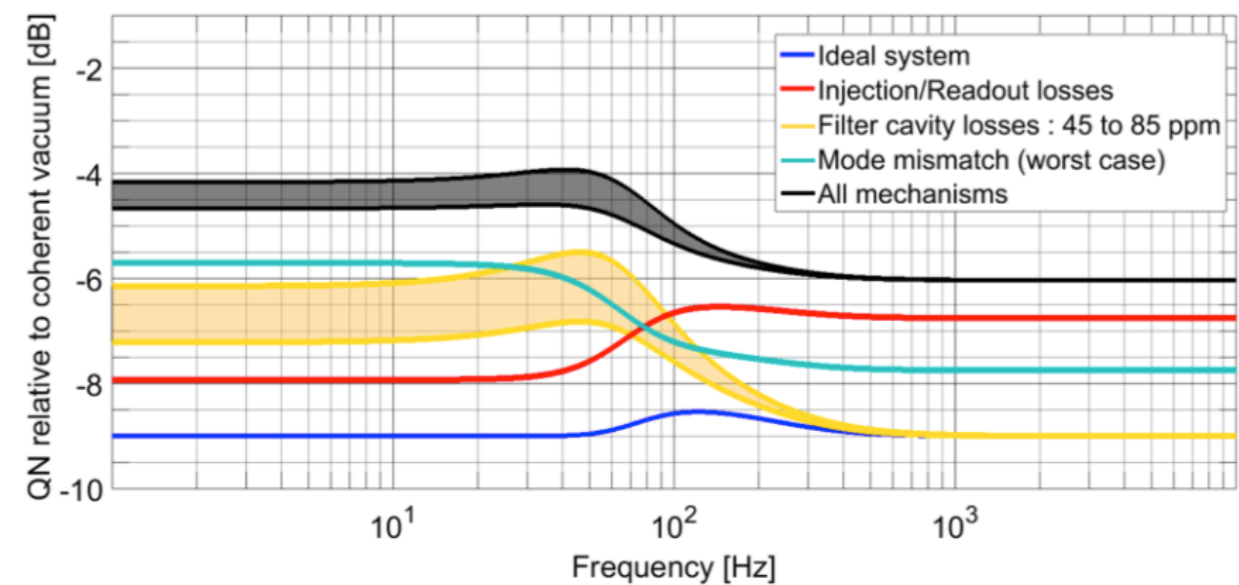
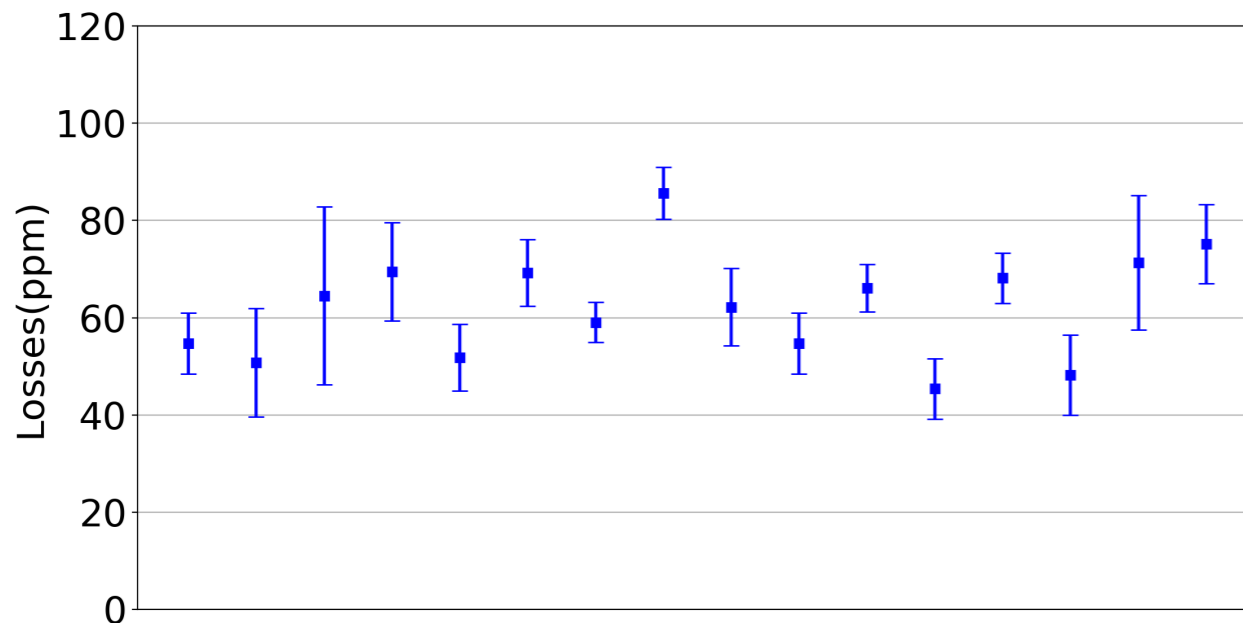


# Status of the frequency dependent squeezing experiment at TAMA



- Filter cavity installed and controlled with green light
- IR detuning controlled with AOM
- Cavity round trip losses between 45 and 85 ppm
- Squeezed vacuum source integration on going



We predict we can obtain about 4 dB of squeezing at low frequency and 6 dB at high frequency.