

KAGRA Science Congress (KSC)

Board members 2017-2019

Hisaaki Shinkai (Osaka Institute of Technology)

Yuta Michimura (University of Tokyo)

Sadakazu Haino (Taiwan Academia Sinica)

Chunglee Kim (KASI)

Postdoc **Yuki Inoue** (Academia SINICA)

Student **Kentaro Komori** (U. of Tokyo)

EO **Nobuyuki Kanda** (Osaka City U.)

Brief Introduction: 真貝寿明 (大阪工大)

Hisaaki Shinkai (Osaka Institute of Technology)



Joined KAGRA in 2015, DAS group

Numerical Relativity, Alternative Gravitational Theories, BH, WH, GW, Cosmology

★ Current works

Shun Yamamoto (山本峻, M2) :

Ringdown wave analysis via Auto-Regressive method **KAGALI**

★ Recent works

—Nonlinear dynamics in the Einstein-Gauss-Bonnet gravity

HS, Torii, PRD 96 (2017) 044009

—Gravitational waves from merging intermediate-mass black holes : II Event rates at ground-based detectors, HS, Kanda, Ebisuzaki ApJ 835 (2017) 276

★ Supported by

✓ Kakenhi-C: Numerical Investigations of Singularities in Higher-Dimensional Space-time (2013/4-2018/3)

✓ Shingakujiyutu: Gravitational Wave Astronomy & Physics: Genesis, A01: Testing gravitational theories using gravitational waves (2017/6 – 2022/3)

KAGALI

KAGRA Science Congress (KSC)

- = Decision making body of KAGRA, based on scientific point of view.
- = Organize Face-2-Face meetings, international workshops, & associate meetings

Board



80 KSC
members
+ 200 KSC
members

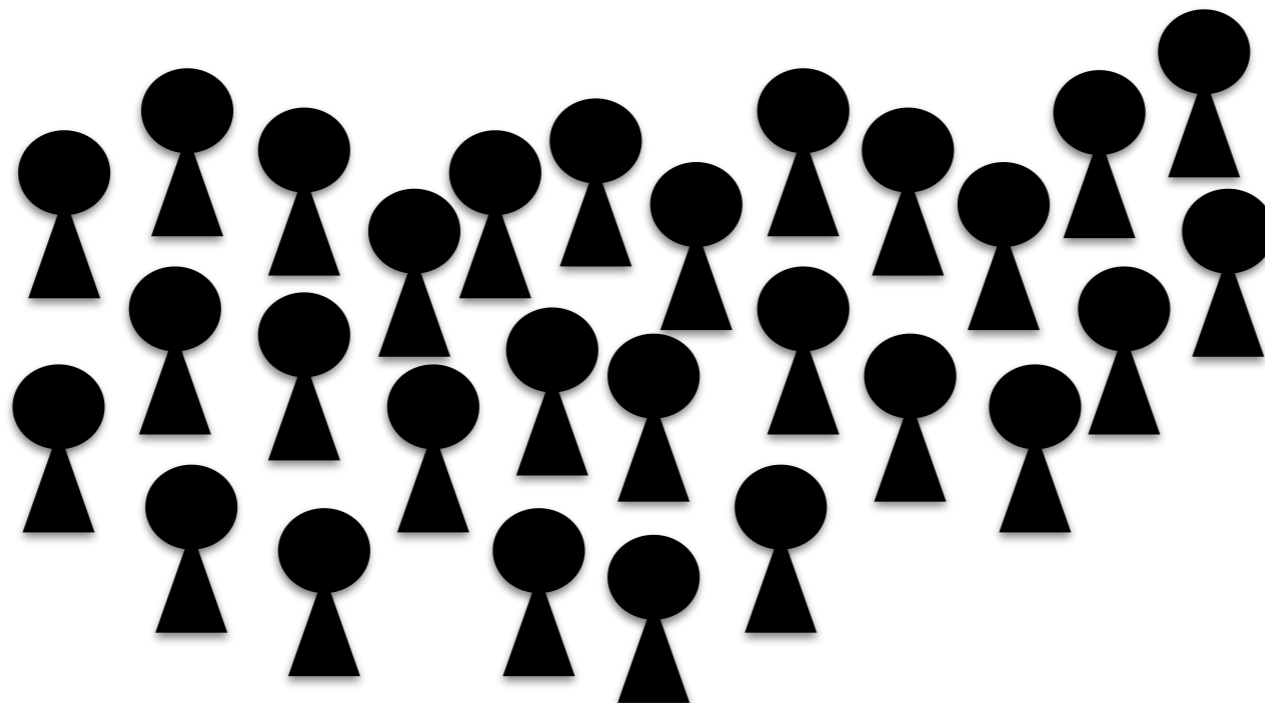
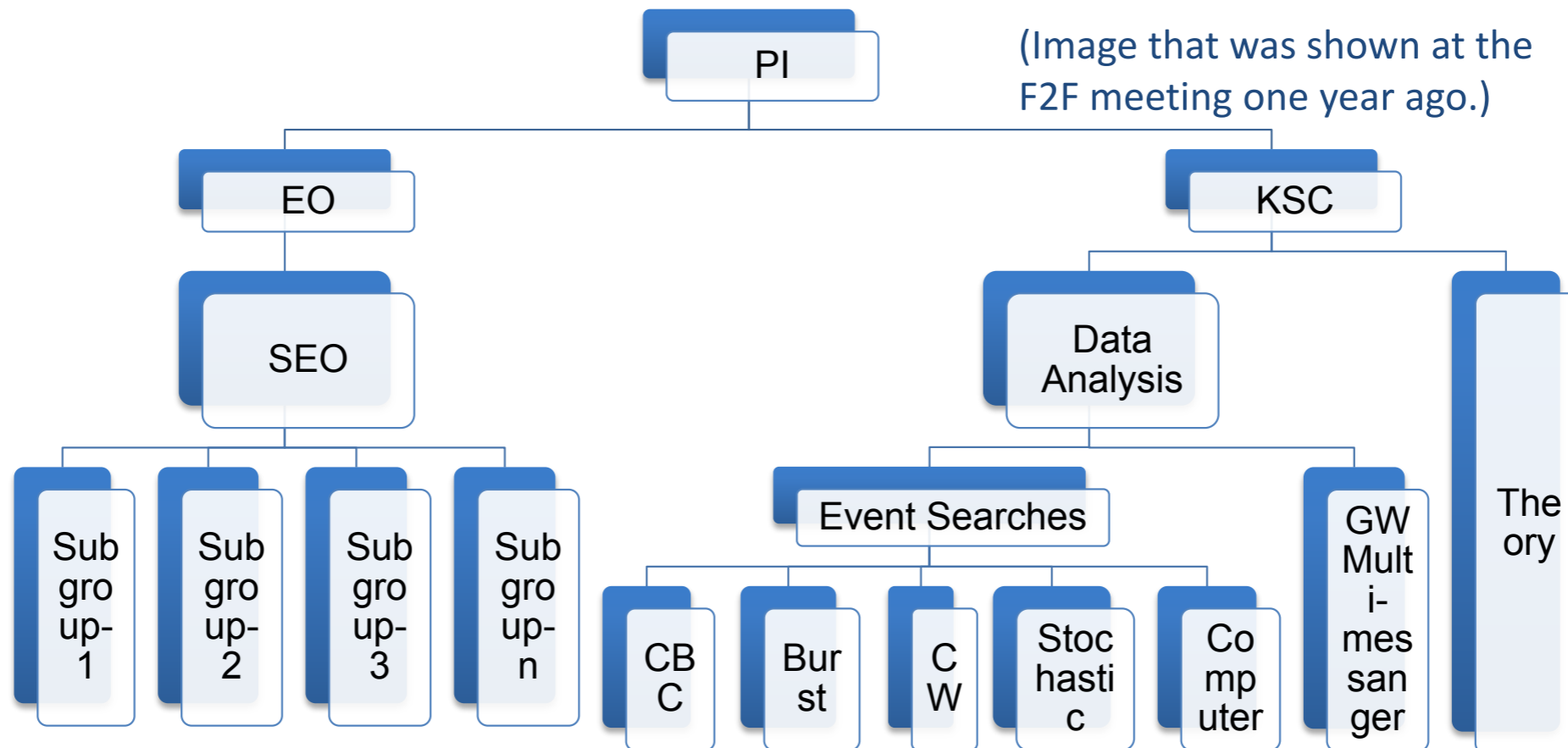


Image of the future Organization Chart

- ✓ bKAGRA construction will finish within ~1.5 years. We move on to the operations phase (after the commissioning phase).
- ✓ It is time for us to think about the future organization (in the observation era) chart including KSC, data analysis teams and “GW Multi-messenger”.



Kajita-san's file (17/08/28)

under discussion

Tasks of the board (homeworks)

Organization for science discussion

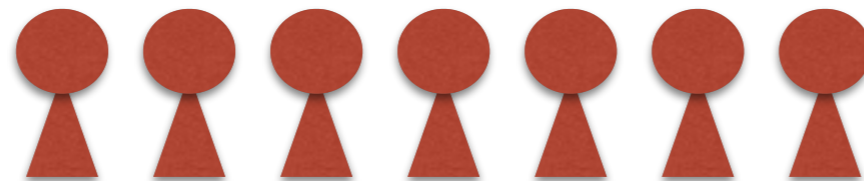
connection between theory & experiments
connection between GR & astronomy

Organization of KAGRA collaborations

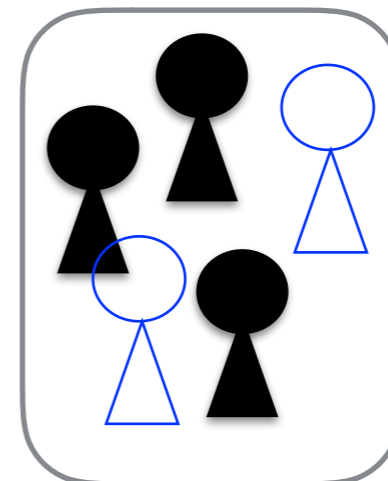
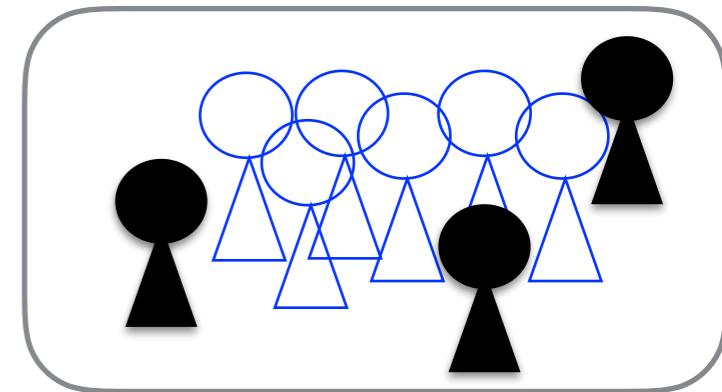
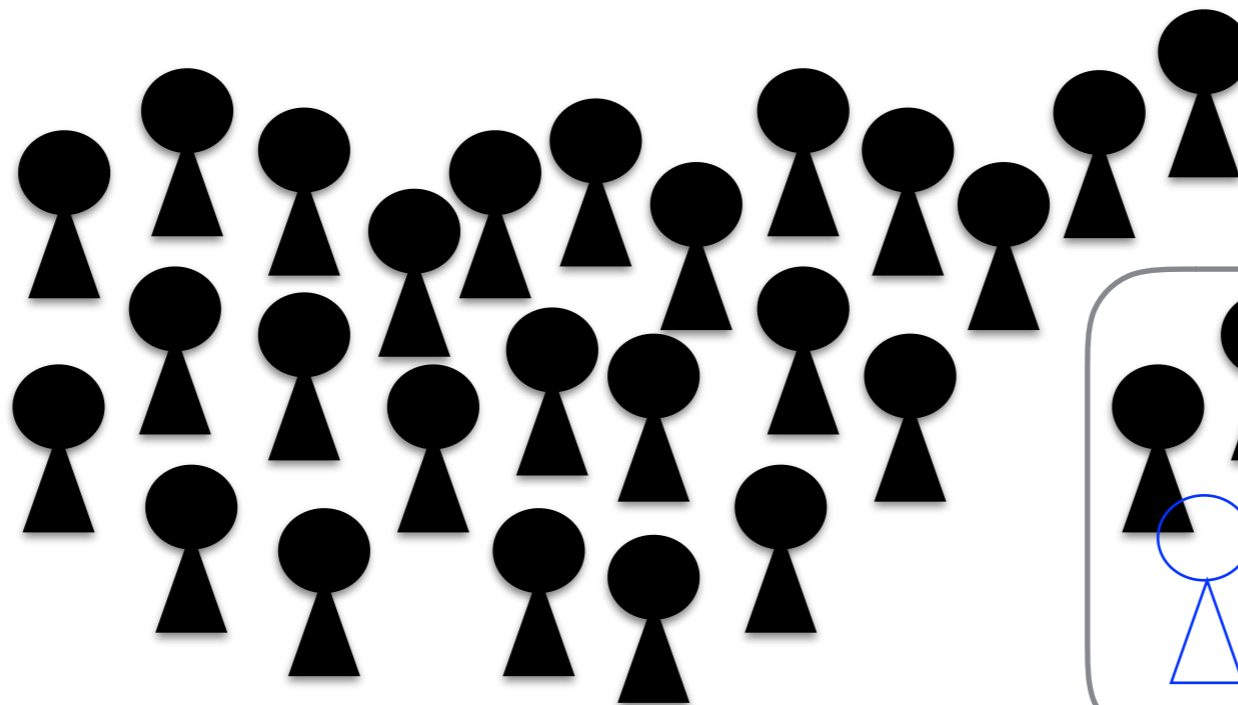
Guidelines for joining group

Authorship, Membership, Diversity, ...

Board



80 KSC
members
+ 200 KSC
members



+ theory,
+ R&D,
+ astronomy,
...

My private projects

- ★ Outreach to public, Outreach ourselves
free-to-use viewgraphs
educational kits for high-school students ?
“KAGRA magazine” ??
GravitationalWaves@Home ???

hisaaki.shinkai@oit.ac.jp

My Policies

- ★ open and frank
- ★ enjoy the works, whatever ..

Next F2F

@Tokyo Inst. Tech., Dec 5-6, 2017

★ Master/Doctor Thesis Presentation

We encourage young students to attend

Email address to the board member

kscboard@icrr.u-tokyo.ac.jp

YWC!