

# KAGRA Science Congress (KSC)

## Board members 2017-2019

**Hisaaki Shinkai** (Osaka Institute of Technology)

**Yuta Michimura** (University of Tokyo)

**Sadakazu Haino** (Taiwan Academia Sinica)

**Chunglee Kim** (KASI)

Postdoc **Yuki Inoue** (Academia SINICA)

Student **Kentaro Komori** (U. of Tokyo)

EO **Nobuyuki Kanda** (Osaka City U.)

# Brief Introduction: 真貝寿明 (大阪工大)

Hisaaki Shinkai (Osaka Institute of Technology)



KAGRA group since 2015, DAS group

Numerical Relativity, Alternative Gravitational Theories, BH, WH, GW, Cosmology

## ★ Current works

Shun Yamamoto (山本峻, M2) :

Ringdown wave analysis via Auto-Regressive method **KAGALI**

## ★ Recent works

—Nonlinear dynamics in the Einstein-Gauss-Bonnet gravity

HS, Torii, PRD 96 (2017) 044009

—Gravitational waves from merging intermediate-mass black holes : II Event rates at ground-based detectors, HS, Kanda, Ebisuzaki ApJ 835 (2017) 276

## ★ Supported by

✓ Kakenhi-C: Numerical Investigations of Singularities in Higher-Dimensional Space-time (2013/4-2018/3)

✓ Shingakujiyutu: Gravitational Wave Astronomy & Physics: Genesis, A01: Testing gravitational theories using gravitational waves (2017/6 – 2022/3)

**KAGALI**

# KAGRA Science Congress (KSC)

- = Decision making body of KAGRA, based on scientific point of view.
- = Organize Face-2-Face meetings, international workshops, & associate meetings

Board

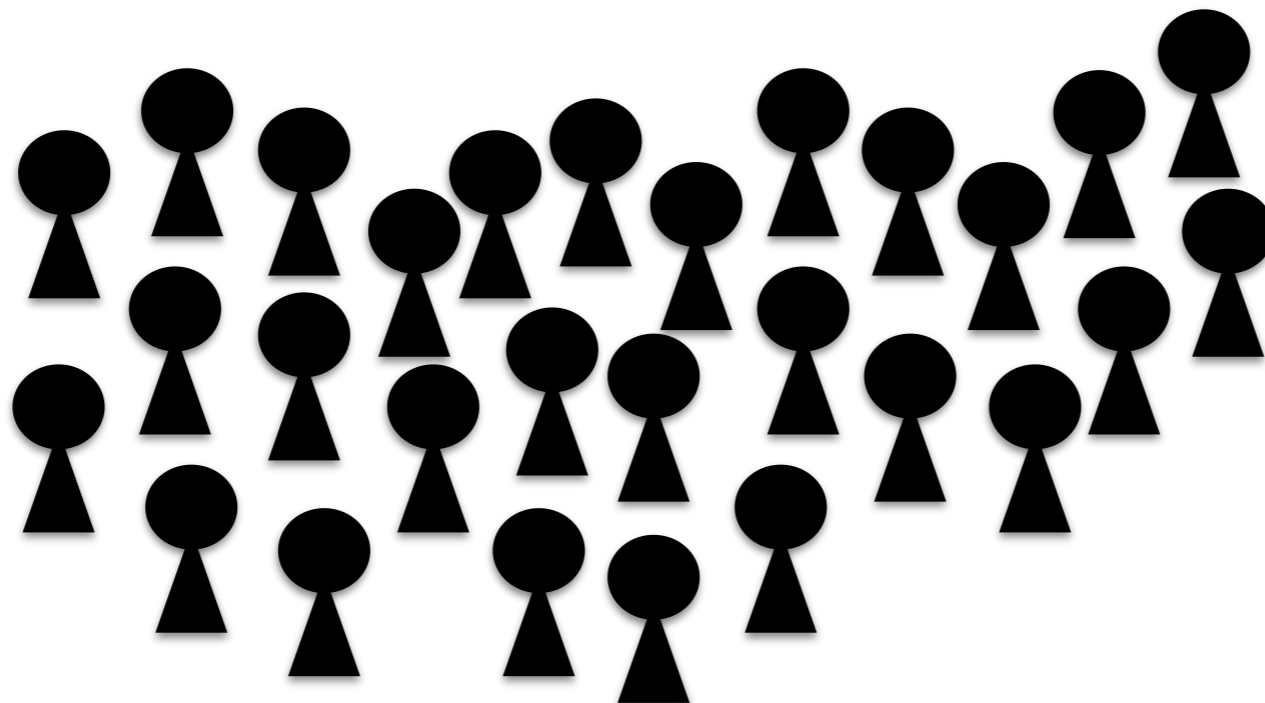


80 KSC

members

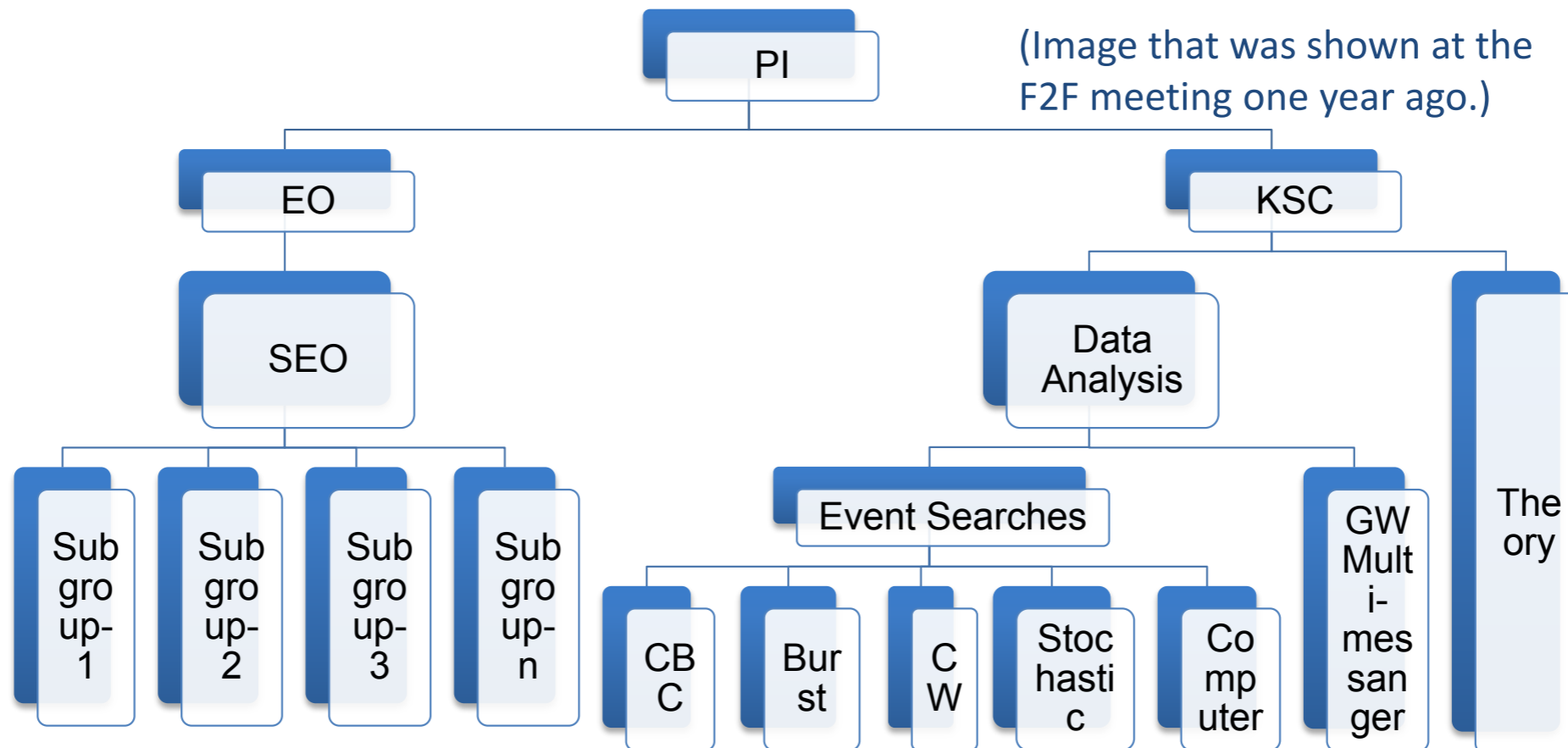
+200 KSC

members



# Image of the future Organization Chart

- ✓ bKAGRA construction will finish within ~1.5 years. We move on to the operations phase (after the commissioning phase).
- ✓ It is time for us to think about the future organization (in the observation era) chart including KSC, data analysis teams and “GW Multi-messenger”.



Kajita-san's file (17/08/28)

under discussion

# Homeworks (1)

Organization for science discussion

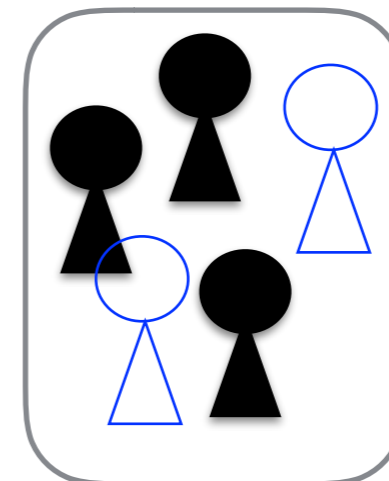
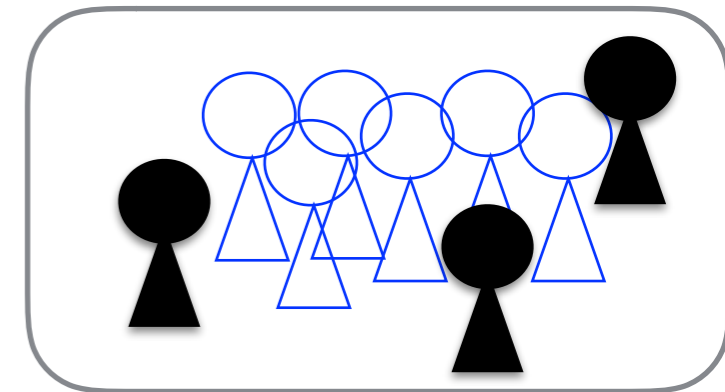
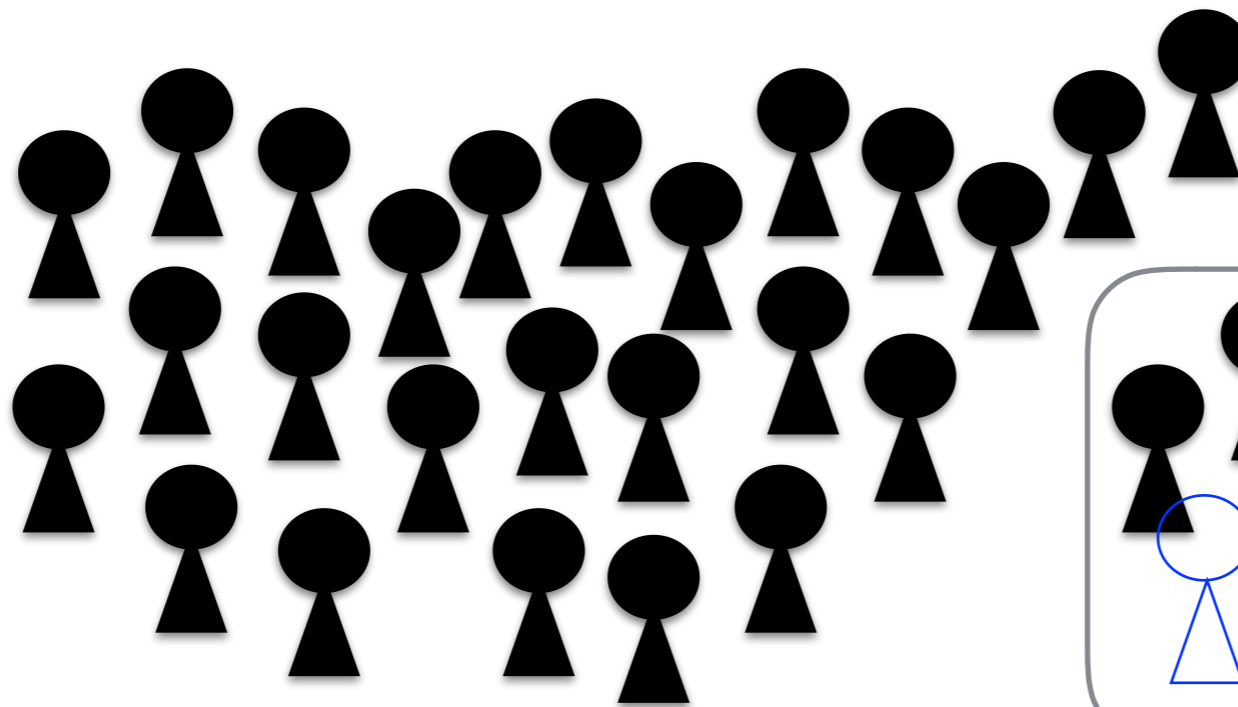
connection between theory & experiments

connection between GR & astronomy

Board



80 KSC  
members  
+ 200 KSC  
members



+ theory,  
+ R&D,  
+ astronomy,  
...

# Homeworks (2)

Organization of KAGRA collaboration

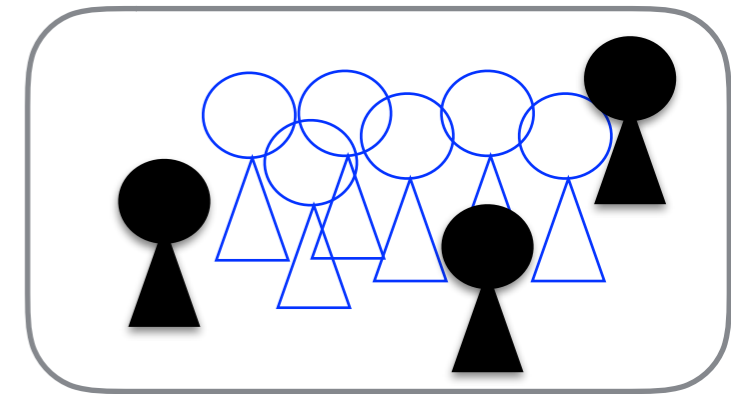
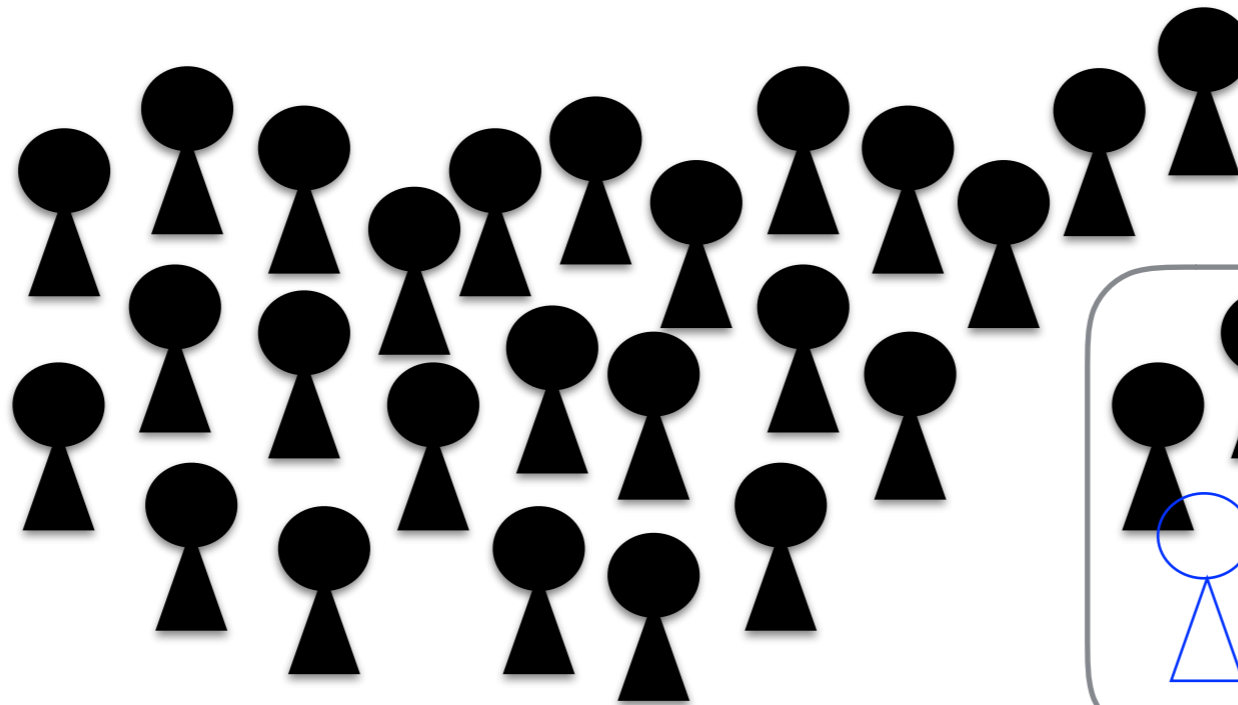
Guidelines for joining group

Authorship, Membership, Diversity, ...

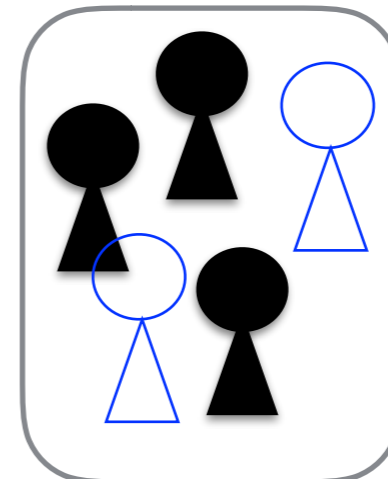
Board



80 KSC  
members  
+ 200 KSC  
members



+ theory,  
+ R&D,  
+ astronomy,  
...



# My private projects

- ★ Outreach to public, Outreach ourselves  
free-to-use viewgraphs  
educational kits for high-school students ?  
“KAGRA magazine” ??  
GravitationalWaves@Home ???

[hisaaki.shinkai@oit.ac.jp](mailto:hisaaki.shinkai@oit.ac.jp)

## My Policies

- ★ open and frank
- ★ enjoy the works, whatever ..

# Next F2F

**@Tokyo Inst. Tech., Dec 5-6, 2017**

★ Master/Doctor Thesis Presentation

We encourage young students to attend

**Email address to the board member**

[kscboard@icrr.u-tokyo.ac.jp](mailto:kscboard@icrr.u-tokyo.ac.jp)

YWC!