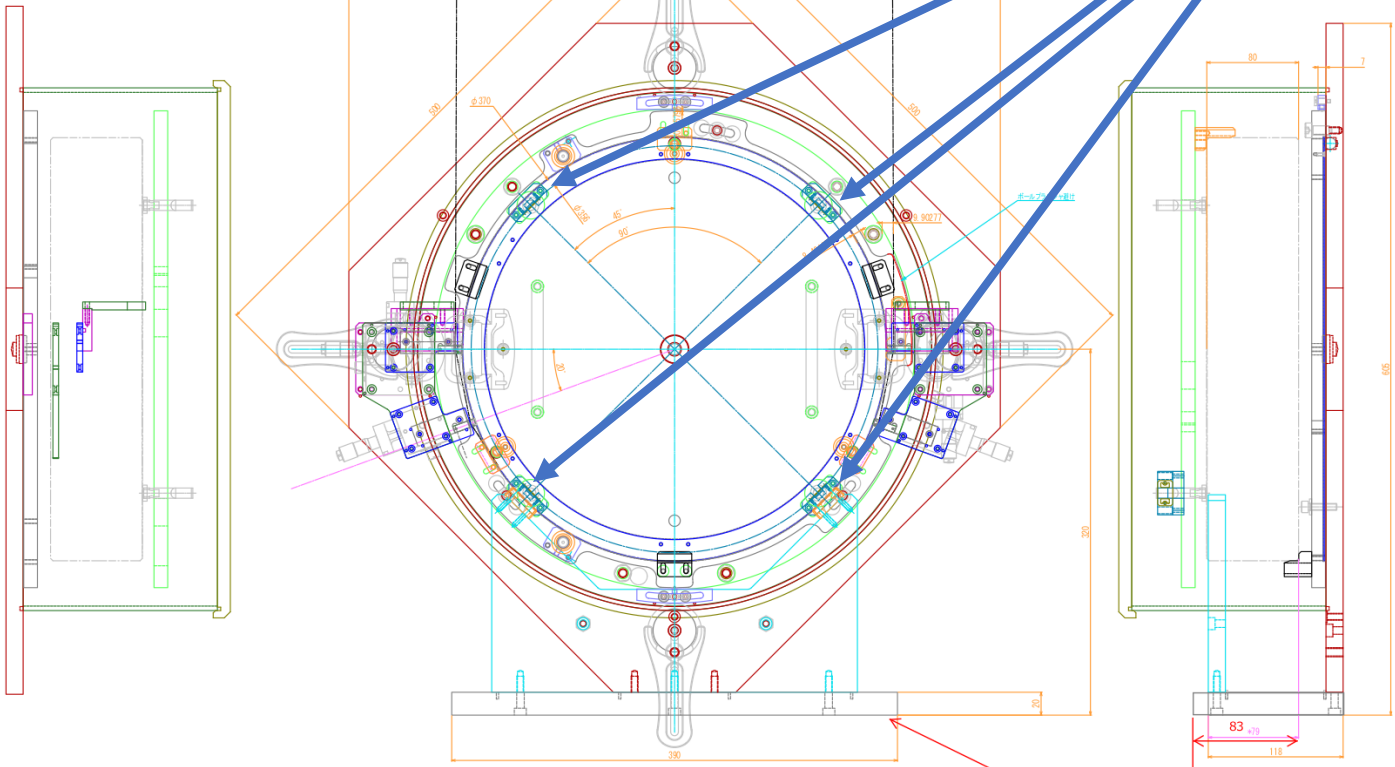


# BS Magnet Gluing Jig Modification for the Smaller Magnets

Mirror box for KAGRA beam splitter mirror  
2015-10-28  
First Mechanical Design

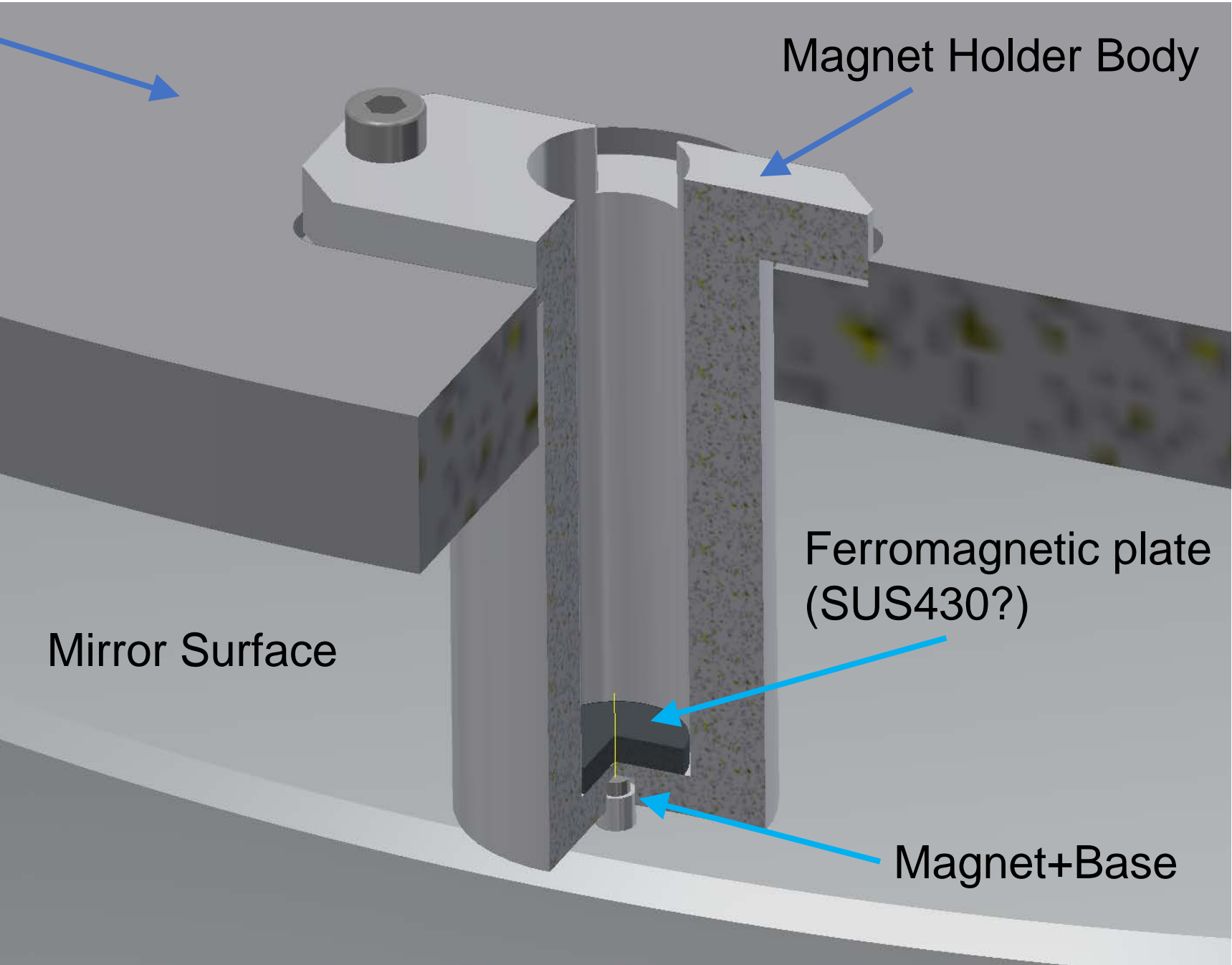
# Magnet gluing jig



ミラーサポートベース  
Base plate of BS mirror box

Mirror Box Middle Plate

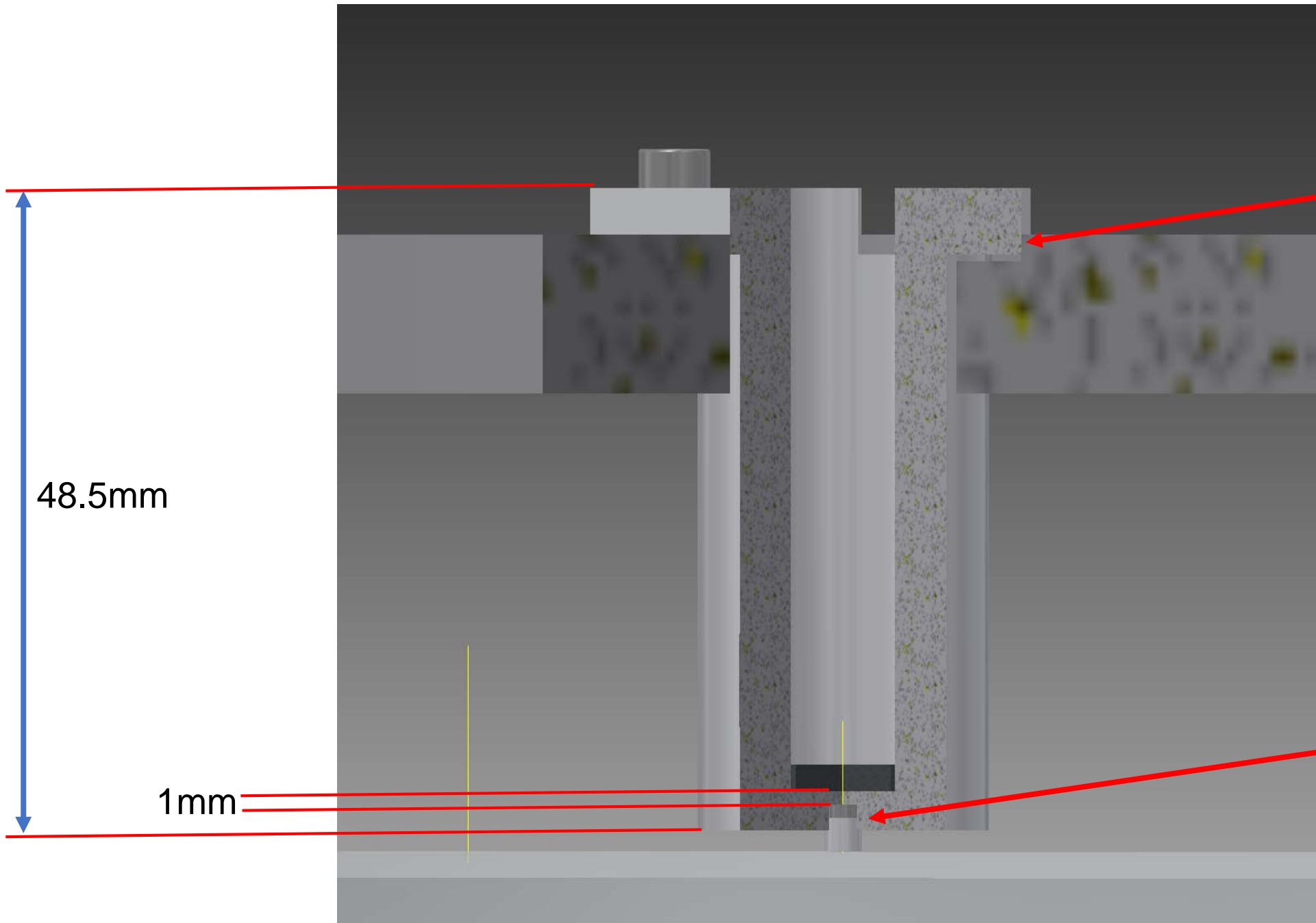
Magnet Holder Body



Mirror Surface

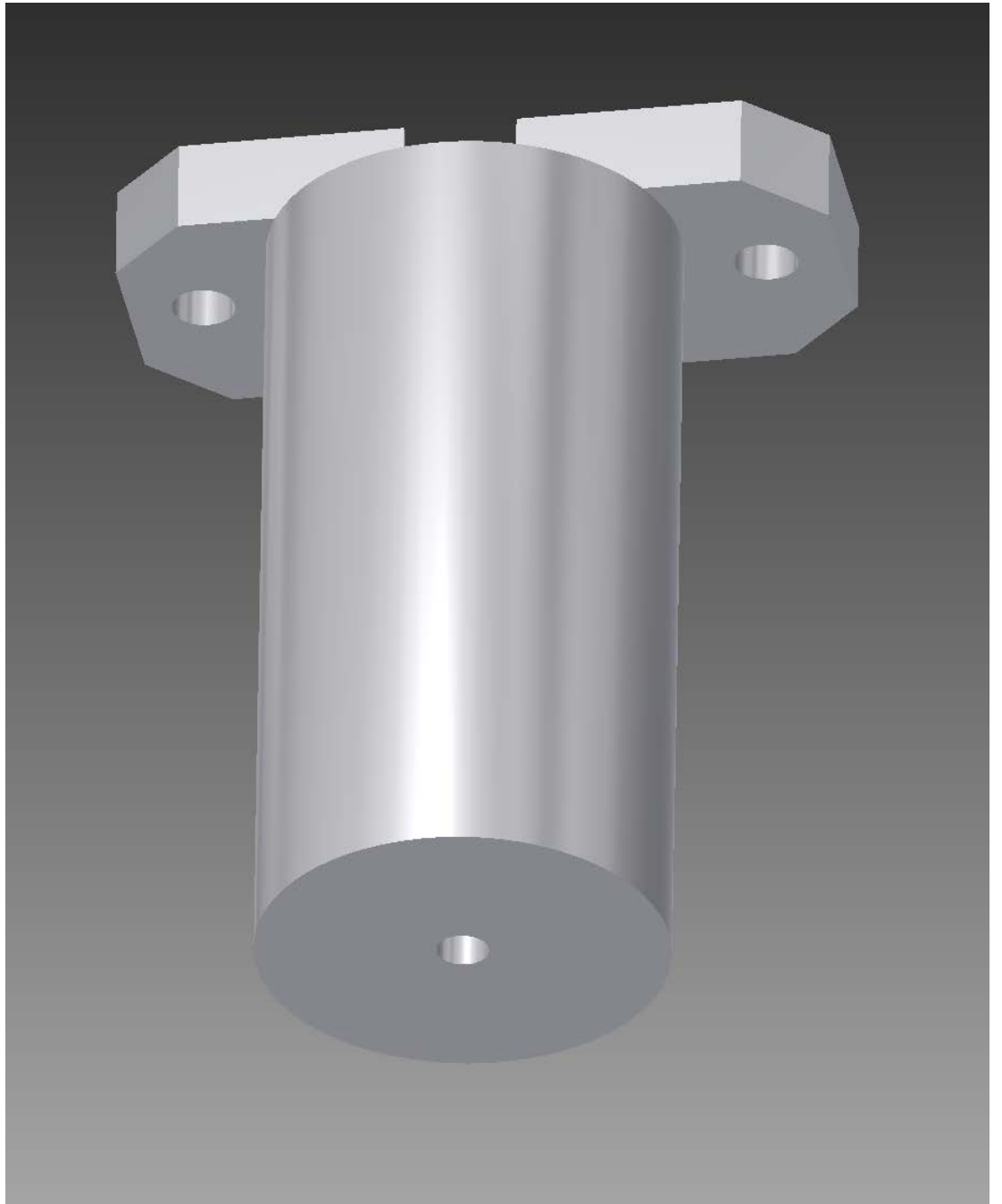
Ferromagnetic plate (SUS430?)

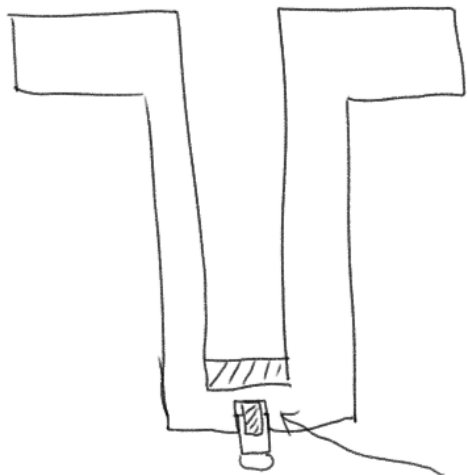
Magnet+Base



Clearance Fit  
すきまばめ  
(H7-g6)

Clearance Fit  
すきまばめ  
(H7-f7)





Magnet is attracted by the ferromagnetic plate.  
Put a small amount of glue on the bottom of the magnet base.

