

Photo-reflective sensor

K. Okutomi

Sokendai D2

Setup for Use

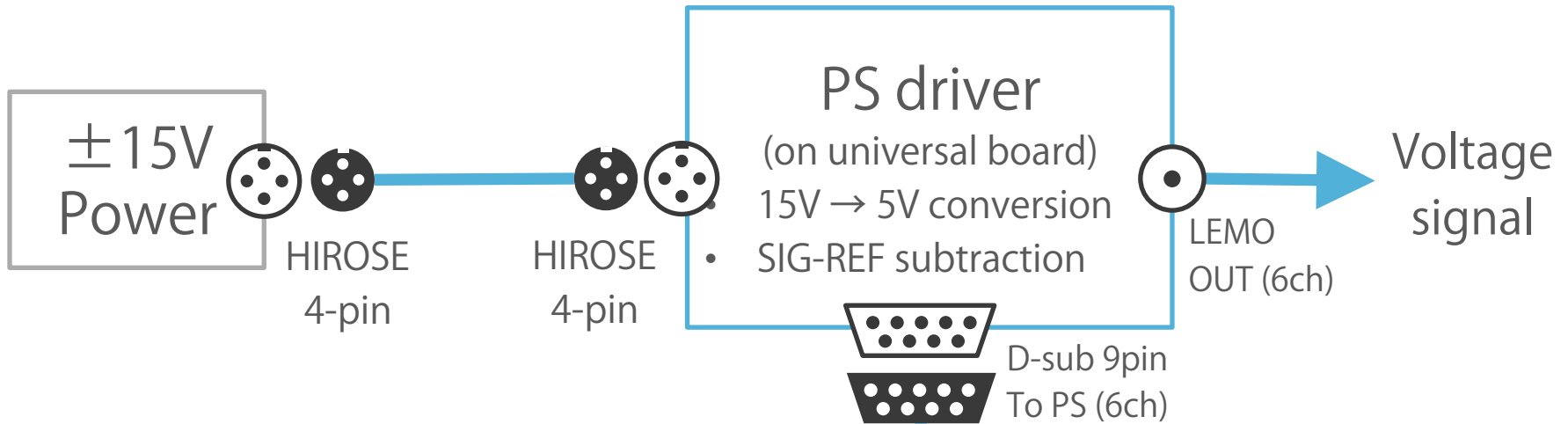
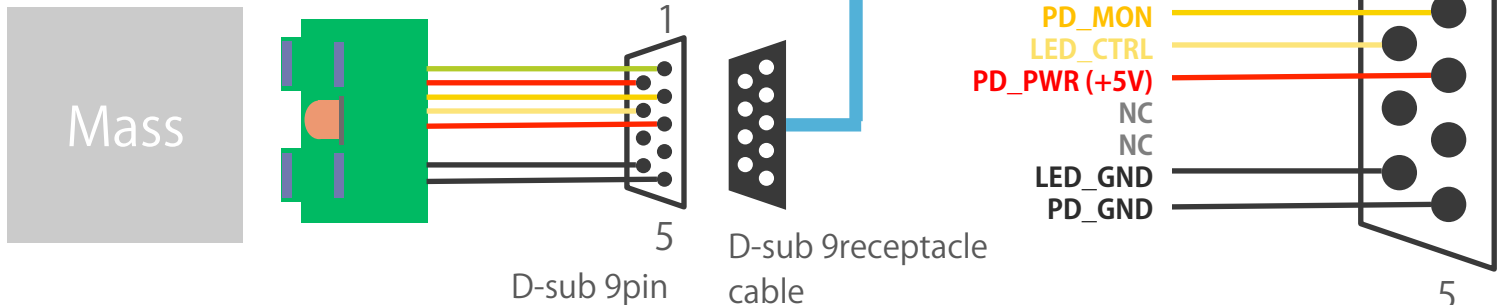


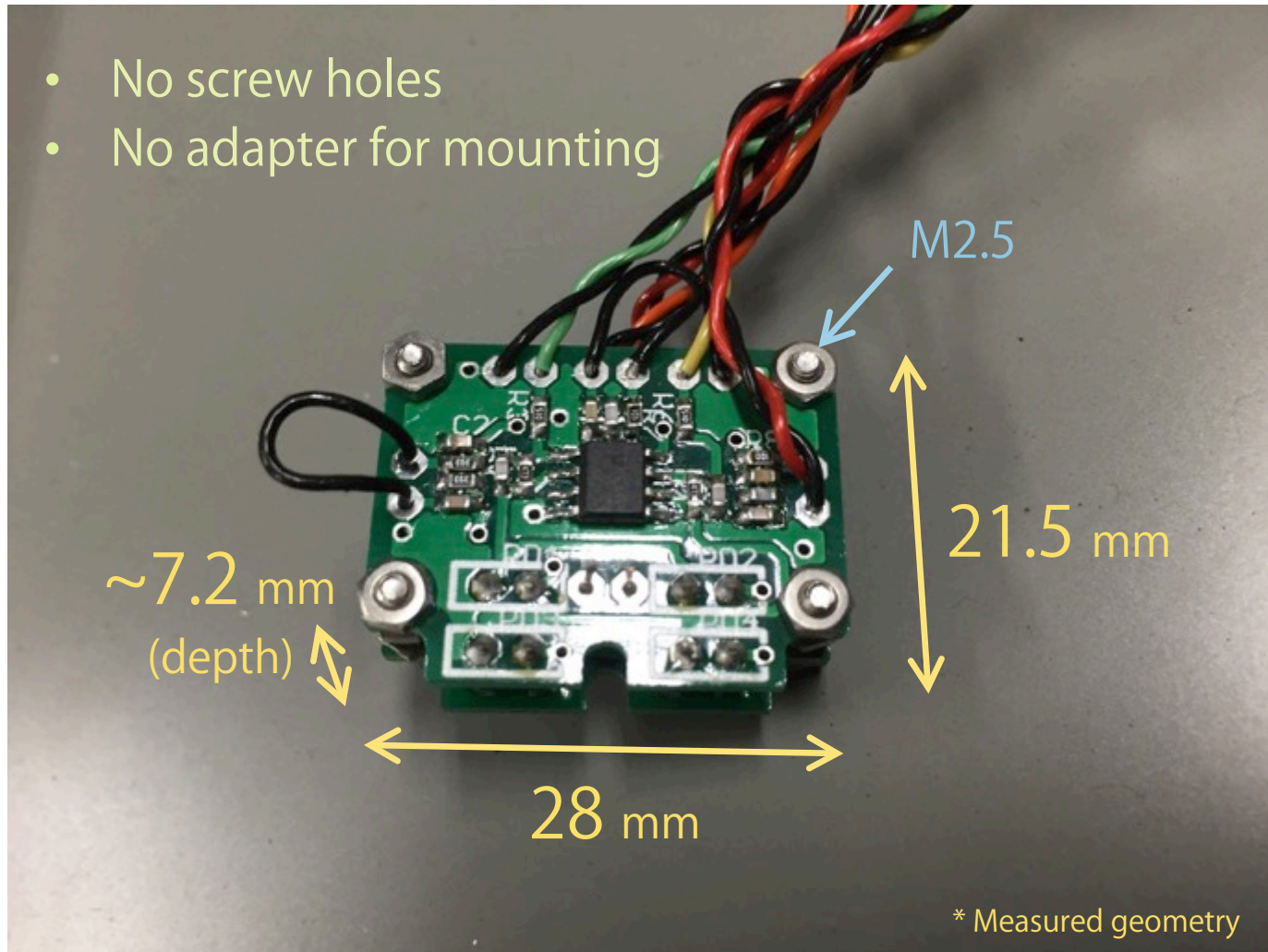
Photo-reflective sensor

- LED
- 2 x PD (SIG) + 2x PD (REF)
- Trans-impedance opamp

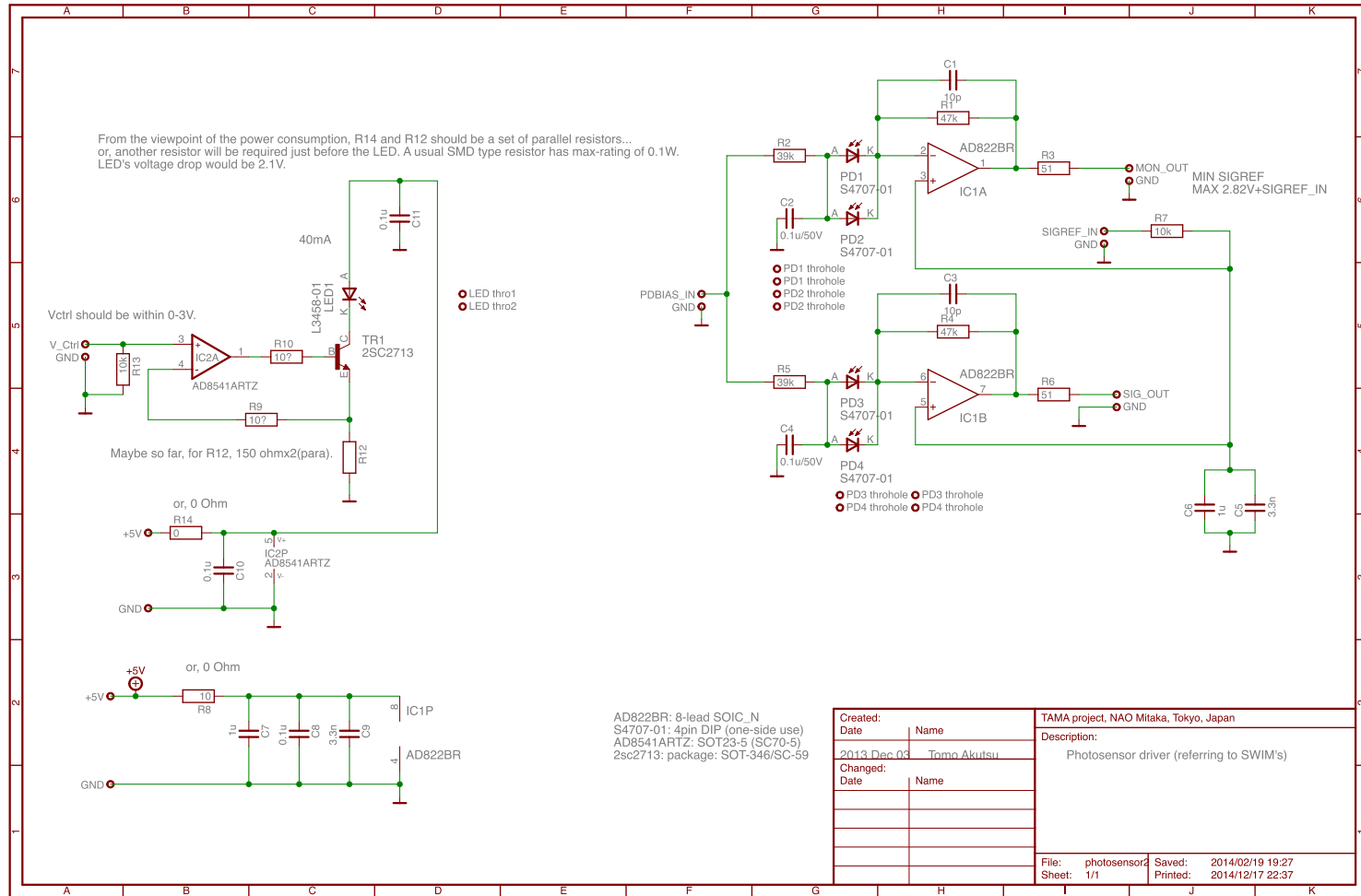


PS Unit

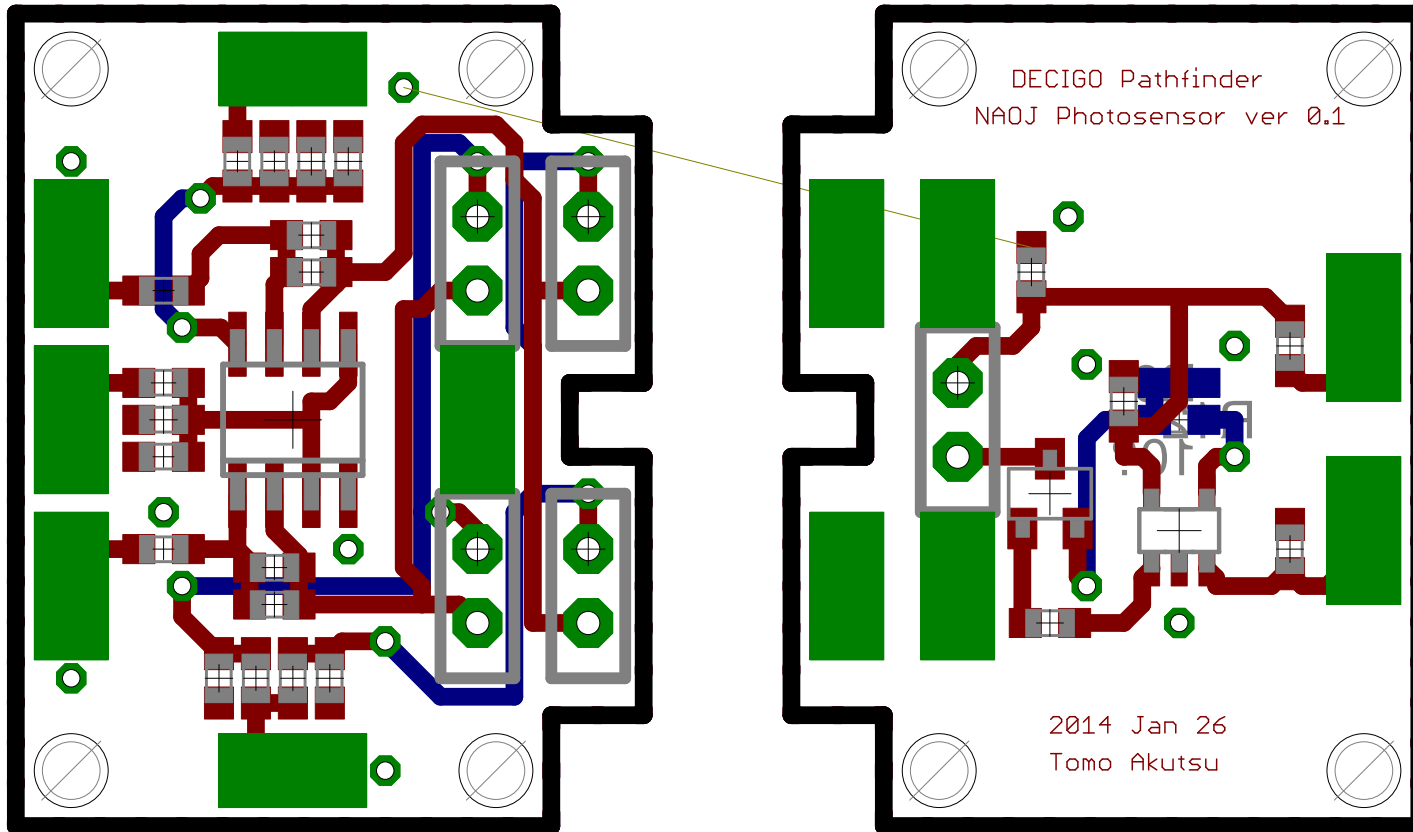
- No screw holes
- No adapter for mounting



On-boarded Circuit Diagram



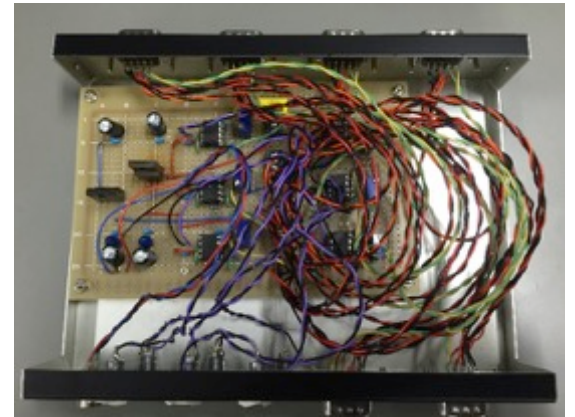
On-boarded Circuit Pattern



PD board

LED board

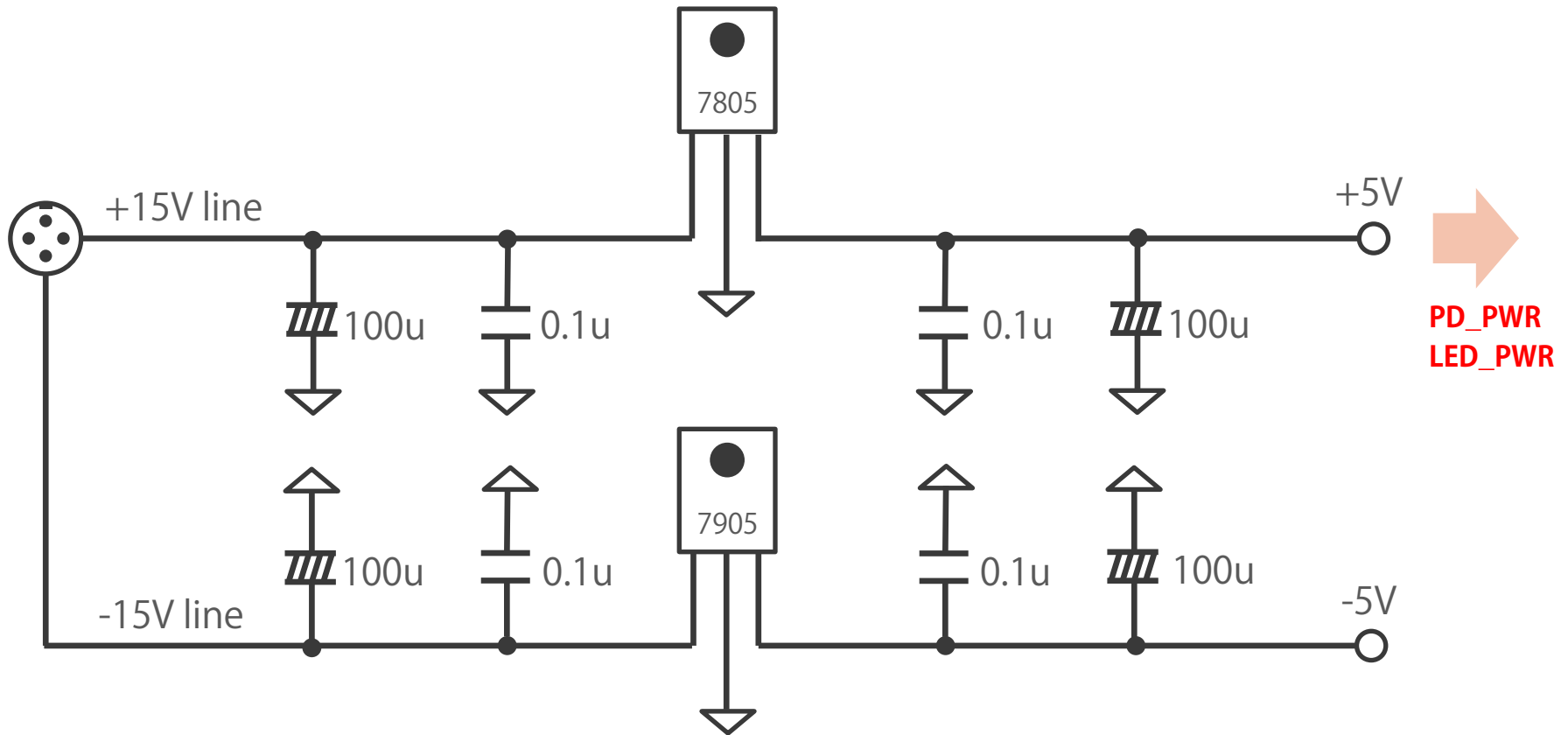
PS Driver



- 6 ch driving
- 15V \rightarrow 5V
- SIG-REF subtract
- Modification needed

Circuit Diagram of PS Driver (1)

- $\pm 15V \rightarrow \pm 5V$ voltage conversion (x1)



Circuit Diagram of PS Driver (2)

- SIG-REF subtraction (x6)

