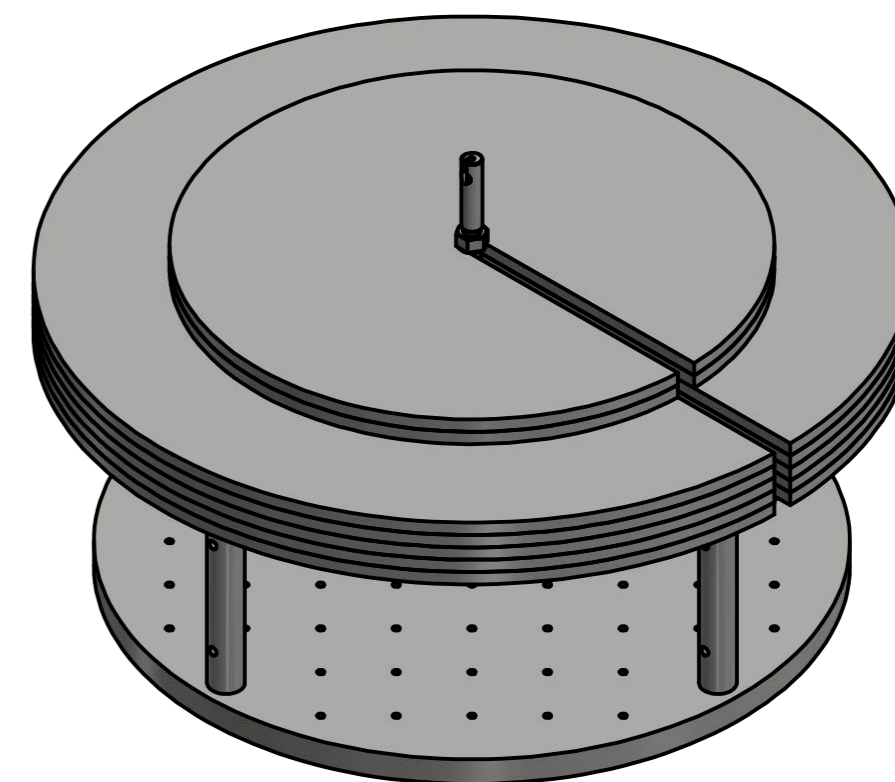
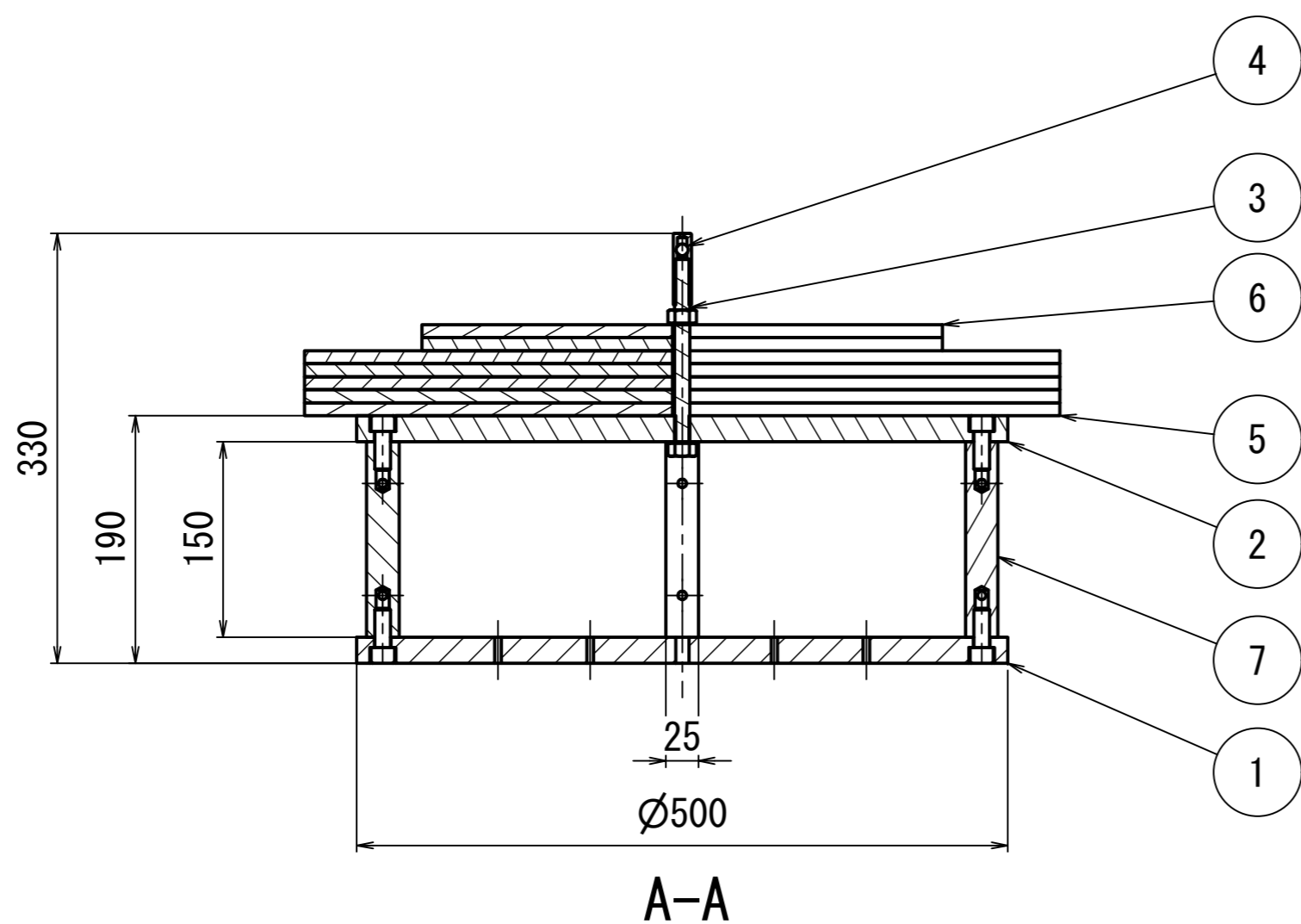
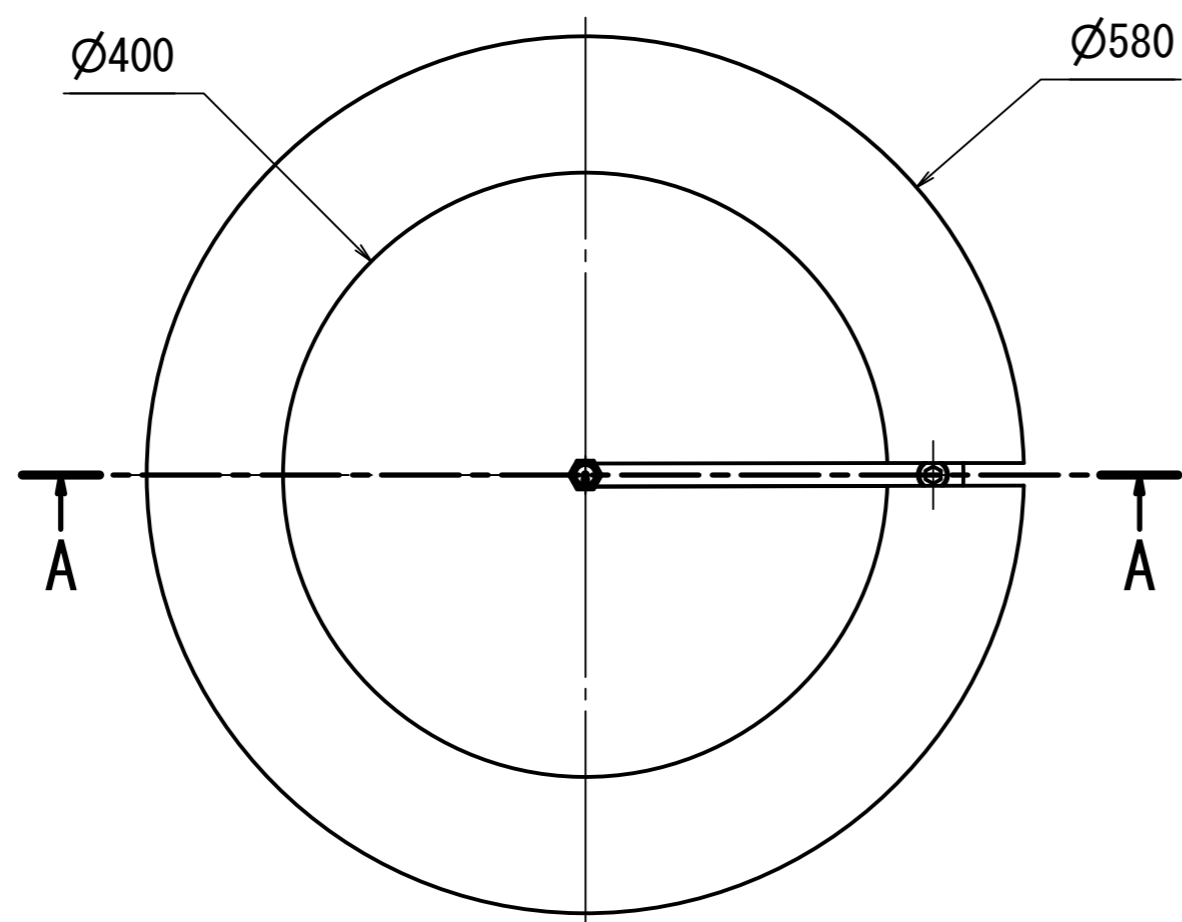


部品表					
項目	部品番号	部品名	材料	数量	表面处理
1	JGW-D1605461-1	Dummy Weight Base 1	SUS304	1	電解研磨
2	JGW-D1605461-2	Dummy Weitht Base 2	SUS304	1	電解研磨
3	JGW-D1605461-3	Screw Rod 150	SUS316	1	SDC浸炭処理
4	JGW-D1605461-4	Receptacle Suspension Wire	SUS304	2	電解研磨
5	JGW-D1605461-5	Weight 20kg	SUS304	5	電解研磨
6	JGW-D1605461-6	Weight 10kg	SUS304	2	電解研磨
7	JGW-D1605461-7	Dummy Weit Rod	SUS304	4	バフ研磨
8	JIS B 1176	Hexagon socket head cap screw M12x30	SUS316	8	SDC浸炭処理
9	JIS B 1252	Spring Washer M12	SUS316	2	
10	JIS B 1181	Hexagon Nut M12	SUS316	2	



Unless otherwise specified:  
 All dimensions are in millimeters (mm).  
 Tolerances: JIS B 0419-mK  
 Machining finish: Ra25  
 Edge breaks: 0.2x45°

Project			KAGRA Type-A VIS	
Source			Assembly_Dummy_Payload.iam	
Title			Dummy Payload	
Drawing No.			JGW-D1605461	Rev. 1
Designed	ishizaki	DATE	THIRD ANGLE PROJECTION	Scale 1 : 5
Drawn	ishizaki	2016/08/08	A2	
Checked	Sato		National Astronomical Observatory of Japan	
Approved	Takahashi		1 / 1	