

Unless otherwise specified:
 All dimensions are in millimeters (mm).
 Tolerances: JIS B 0419-mK
 Machining finish: Ra25
 Edge breaks: 0.2x45°

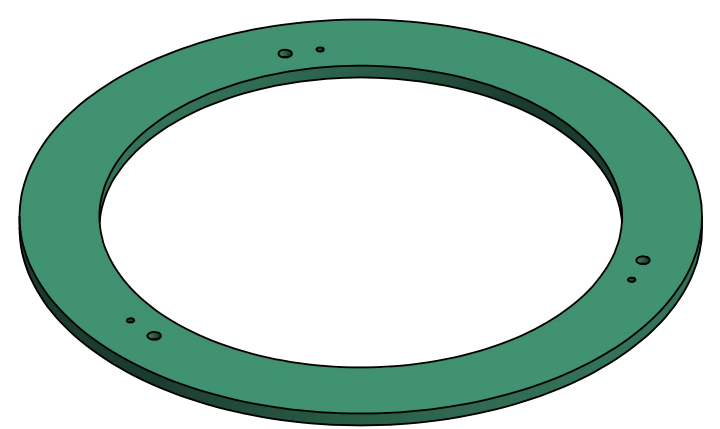
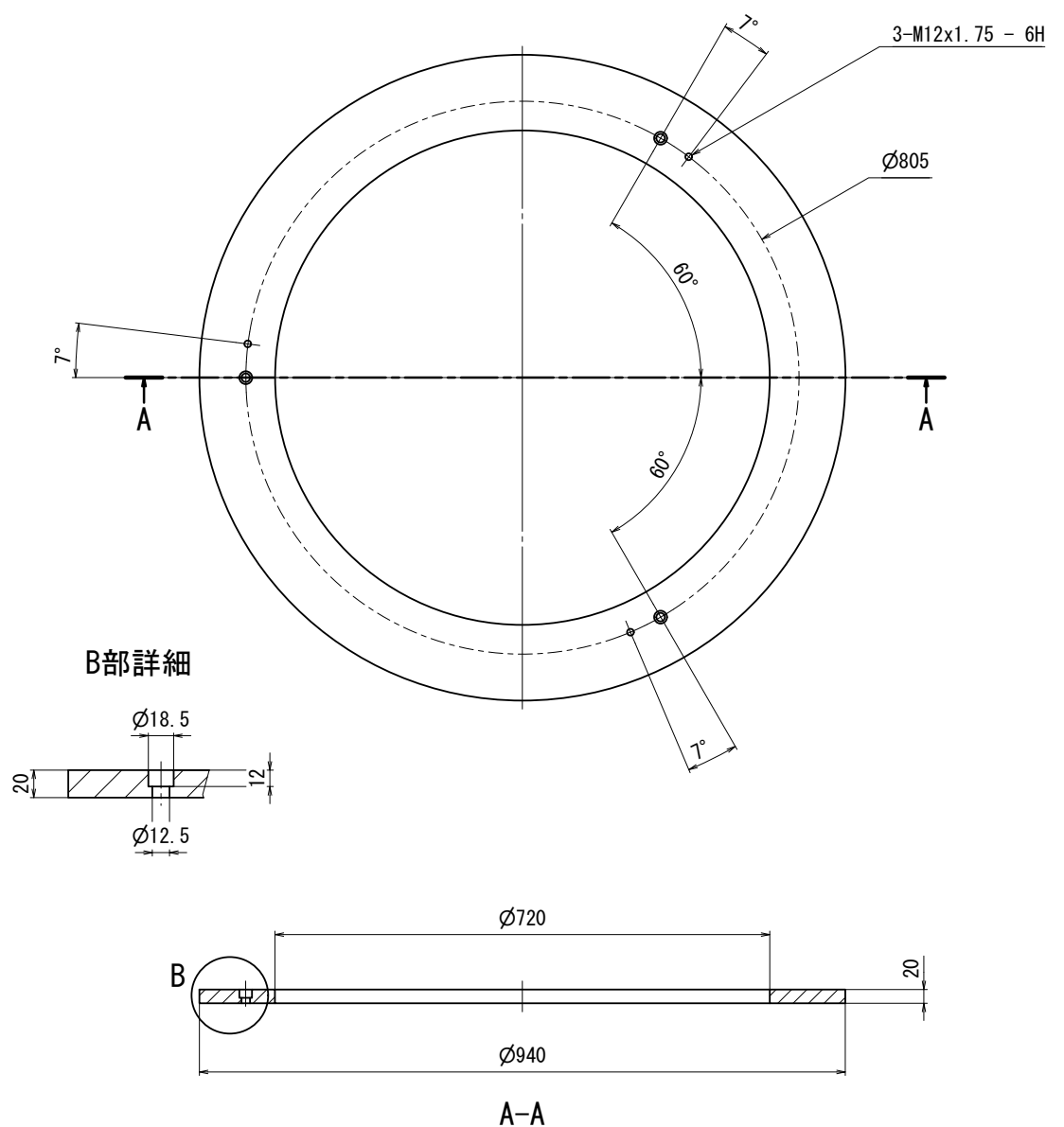
Project: KAGRA Type-A VIS

Source: Part_new_FrameLock.ipt

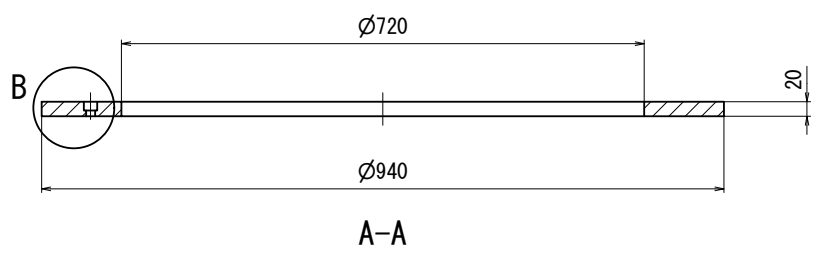
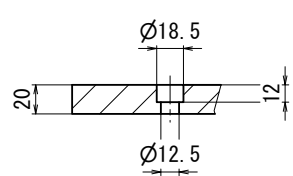
Title: Frame Lock

Material	SUS304		Drawing No.		Rev.
FINISH	電解研磨		JGW-D1605460-1		1
Designed	NAME	DATE	THIRD ANGLE PROJECTION		Scale
Drawn	ishizaki	2016/08/05			1 : 5
Checked	Sato		NAO J National Astronomical Observatory of Japan		A2
Approved	Takahashi				1 / 1

A-A 3箇所




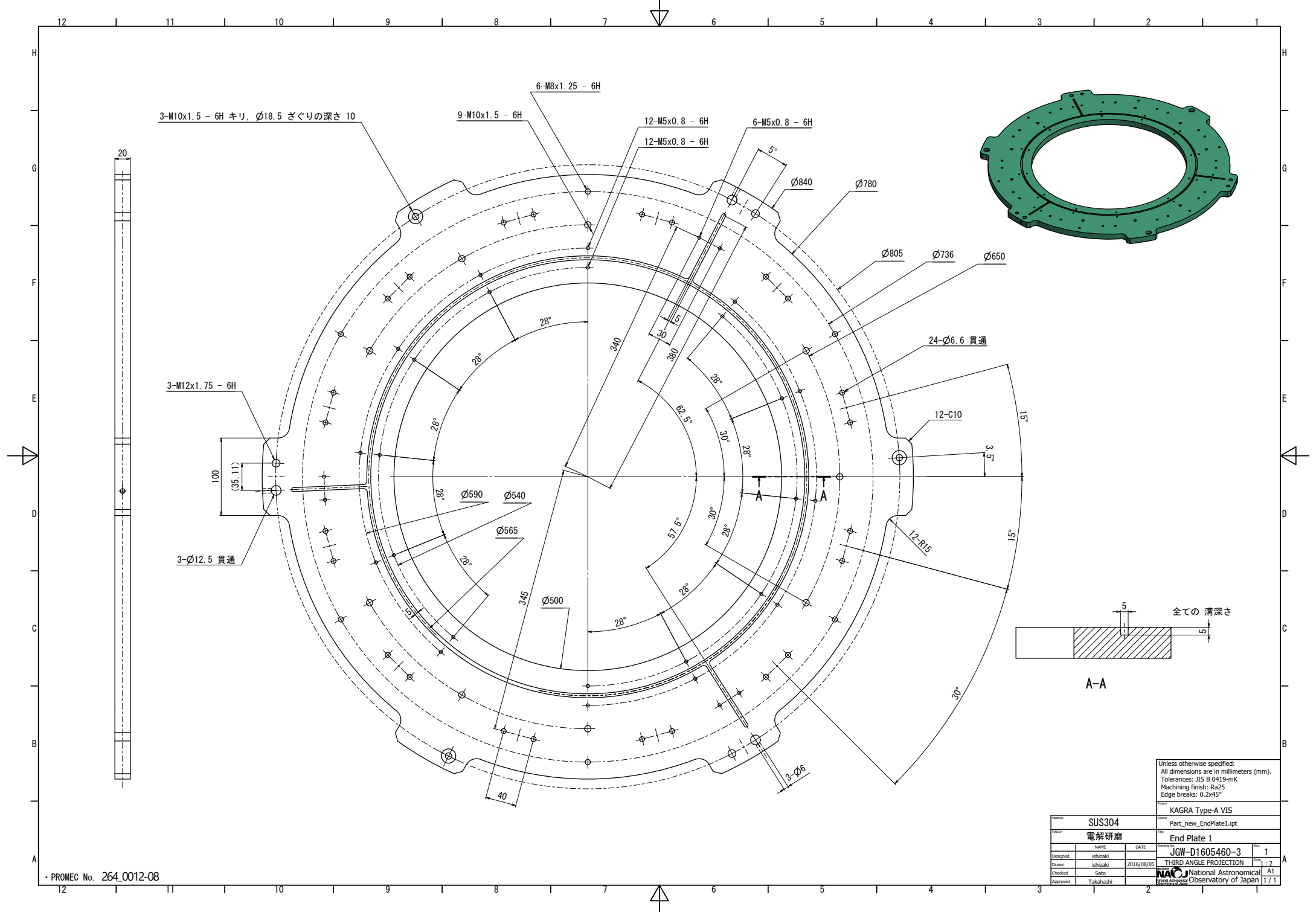
B部詳細



Unless otherwise specified:
 All dimensions are in millimeters (mm).
 Tolerances: JIS B 0419-mK
 Machining finish: Ra25
 Edge breaks: 0.2x45°

Project: KAGRA Type-A VIS

Material	SAS304		Source	Part_new_TopRingSecurityStructure.ipr	
FINISH	電解研磨		Title	Top Ring Security Structure	
Designed	NAME	DATE	Drawing No.	Rev.	
Drawn	ishizaki	2016/08/05	JGW-D1605460-2	1	
Checked			THIRD ANGLE PROJECTION	Scale	1 : 5
Approved			 National Astronomical Observatory of Japan		A2 1 / 1



3-M10x1.5 - 6H キリ, Ø18.5 ざぐりの深さ 10

9-M10x1.5 - 6H

6-M8x1.25 - 6H

12-M5x0.8 - 6H

6-M5x0.8 - 6H

3-M12x1.75 - 6H

100

3-Ø12.5 貫通

345

40

340

380

30°

28°

28°

28°

28°

28°

28°

28°

28°

28°

28°

28°

28°

28°

28°

28°

28°

28°

28°

28°

28°

28°

28°

28°

28°

28°

28°

28°

28°

28°

28°

28°

28°

28°

28°

28°

28°

28°

28°

28°

28°

28°

28°

28°

28°

28°

28°

28°

28°

28°

28°

28°

28°

28°

28°

28°

28°

28°

28°

28°

28°

28°

28°

28°

28°

28°

28°

28°

28°

28°

28°

28°

28°

28°

28°

28°

28°

28°

28°

28°

28°

28°

28°

28°

28°

28°

28°

28°

28°

28°

28°

28°

28°

28°

28°

28°

28°

28°

28°

28°

28°

28°

28°

28°

28°

28°

28°

28°

28°

28°

28°

28°

28°

28°

28°

28°

28°

28°

28°

28°

28°

28°

28°

28°

28°

28°

28°

28°

28°

28°

28°

28°

28°

28°

28°

28°

28°

28°

28°

28°

28°

28°

28°

28°

28°

28°

28°

28°

28°

28°

28°

28°

28°

28°

28°

28°

28°

28°

28°

28°

28°

28°

28°

28°

28°

28°

28°

28°

28°

28°

28°

28°

28°

28°

28°

28°

28°

28°

28°

28°

28°

28°

28°

28°

28°

28°

28°

28°

28°

28°

28°

28°

28°

28°

28°

28°

28°

28°

28°

28°

28°

28°

28°

28°

28°

28°

28°

28°

28°

28°

28°

28°

28°

28°

28°

28°

28°

28°

28°

28°

28°

28°

28°

28°

28°

28°

28°

28°

28°

28°

28°

28°

28°

28°

28°

28°

28°

28°

28°

28°

28°

28°

28°

28°

28°

28°

28°

28°

28°

28°

28°

28°

28°

28°

28°

28°

28°

28°

28°

28°

28°

28°

28°

28°

28°

28°

28°

28°

28°

28°

28°

28°

28°

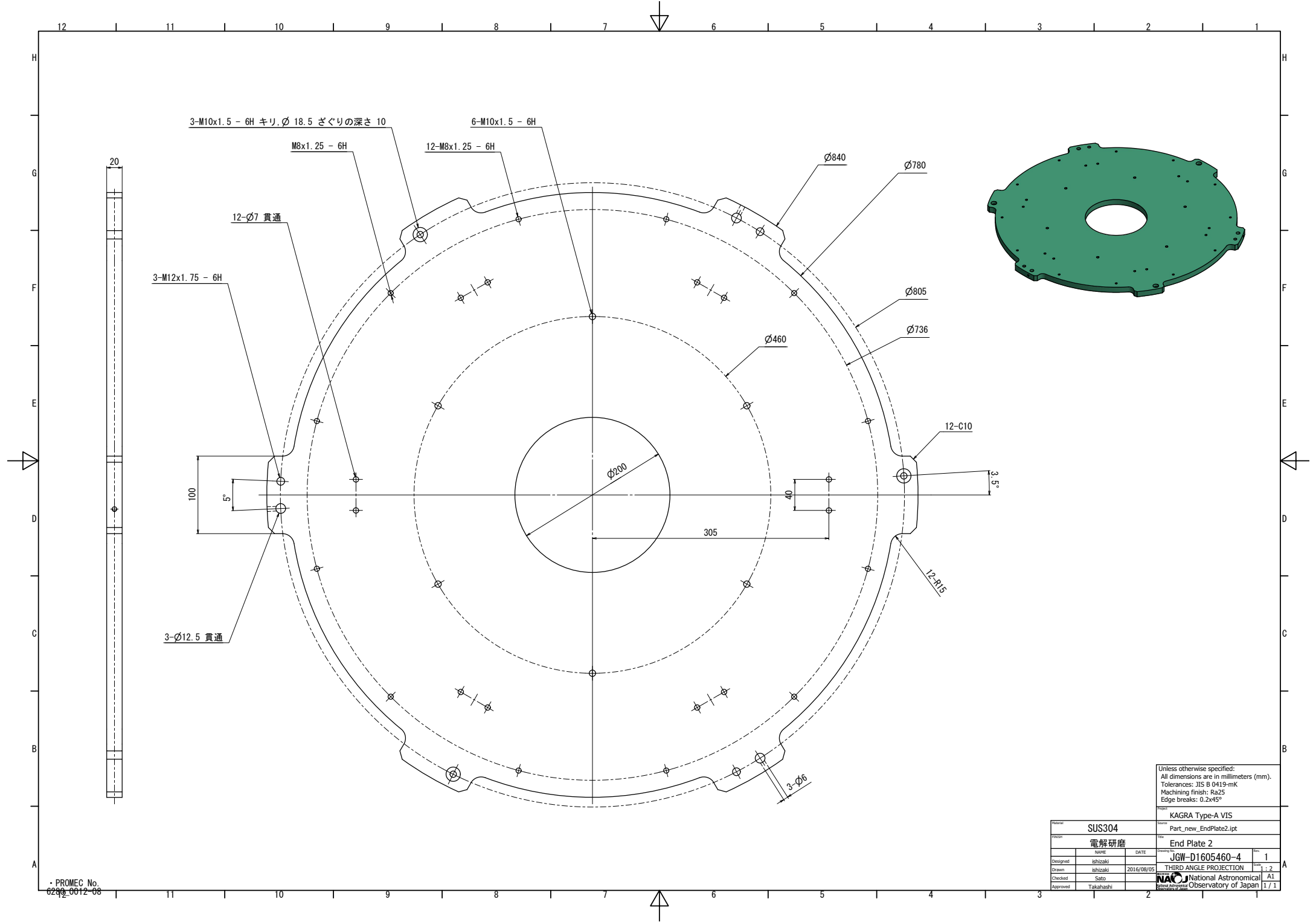
28°

28°

28°

28°

28°



3-M10x1.5 - 6H キリ, ϕ 18.5 ざぐりの深さ 10

6-M10x1.5 - 6H

M8x1.25 - 6H

12-M8x1.25 - 6H

12-Ø7 貫通

3-M12x1.75 - 6H

100

5°

$\phi 200$

305

40

3.5°

3-Ø12.5 貫通

$\phi 840$

$\phi 780$

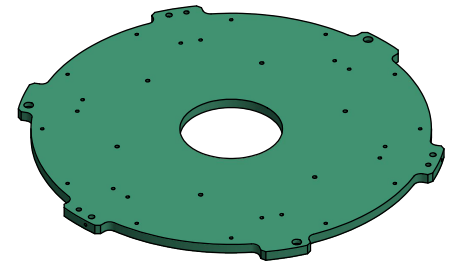
$\phi 805$

$\phi 736$

12-C10

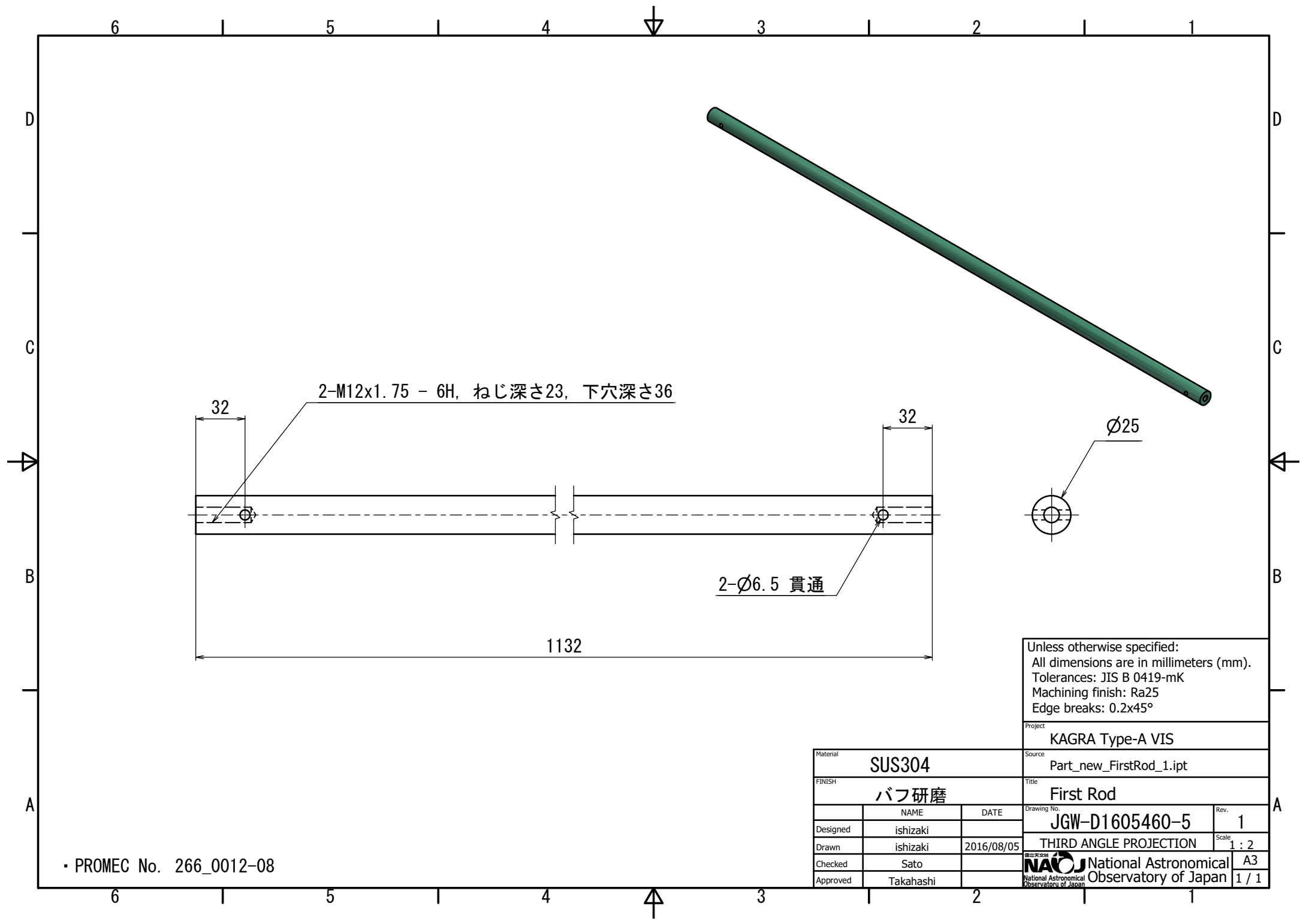
12-R15

3-Ø6



Unless otherwise specified:
 All dimensions are in millimeters (mm).
 Tolerances: JIS B 0419-mK
 Machining finish: Ra25
 Edge breaks: 0.2x45°

Material		SUS304		Name		KAGRA Type-A VIS	
FINISH		電解研磨		File		Part_new_EndPlate2.ipt	
Designat		JGW-D1605460-4		Rev		1	
Drawn		Ishizaki		Drawing No.		THIRD ANGLE PROJECTION	
Checked		Sato		Scale		1 : 2	
Approved		Takahashi		Sheet		A1	
				National Astronomical		Observatory of Japan	



2-M12x1.75 - 6H, ねじ深さ23, 下穴深さ36

32

32

1132

2- ϕ 6.5 貫通

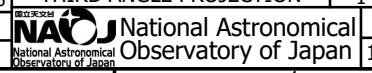
ϕ 25

Unless otherwise specified:
 All dimensions are in millimeters (mm).
 Tolerances: JIS B 0419-mK
 Machining finish: Ra25
 Edge breaks: 0.2x45°

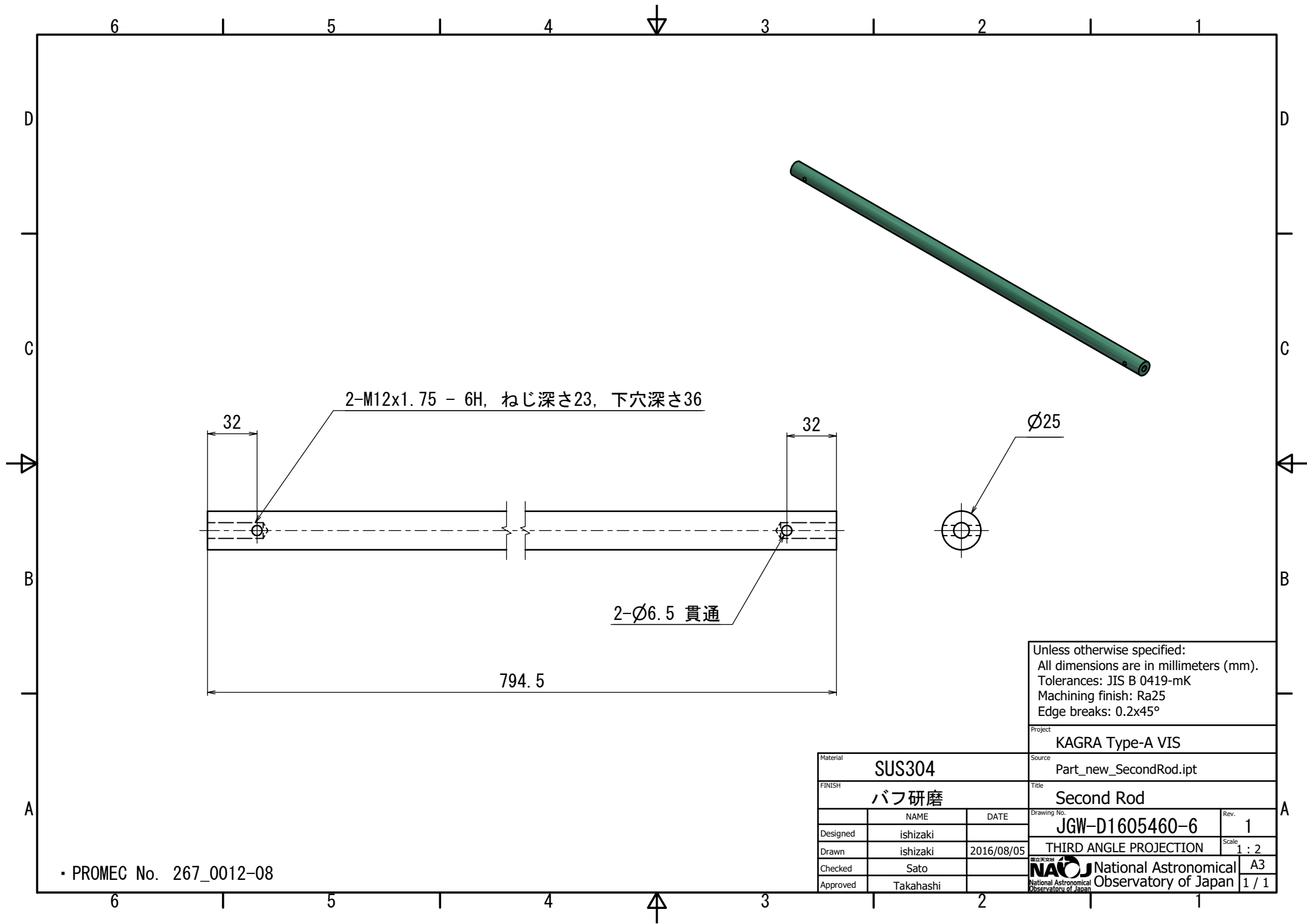
Project
KAGRA Type-A VIS

Material	SUS304	
FINISH	バフ研磨	
Designed	ishizaki	DATE
Drawn	ishizaki	2016/08/05
Checked	Sato	
Approved	Takahashi	

Source	Part_new_FirstRod_1.ipt	
Title	First Rod	
Drawing No.	JGW-D1605460-5	Rev. 1
Scale	THIRD ANGLE PROJECTION	1 : 2
Sheet	A3	
Page	1 / 1	



・ PROMEC No. 266_0012-08



2-M12x1.75 - 6H, ねじ深さ23, 下穴深さ36

32

32

Ø25

2-Ø6.5 貫通

794.5

Unless otherwise specified:
 All dimensions are in millimeters (mm).
 Tolerances: JIS B 0419-mK
 Machining finish: Ra25
 Edge breaks: 0.2x45°

Project
 KAGRA Type-A VIS

Material
 SUS304

Source
 Part_new_SecondRod.ipt

FINISH
 バフ研磨

Title
 Second Rod

	NAME	DATE
Designed	ishizaki	
Drawn	ishizaki	2016/08/05
Checked	Sato	
Approved	Takahashi	

Drawing No.	Rev.
JGW-D1605460-6	1

THIRD ANGLE PROJECTION

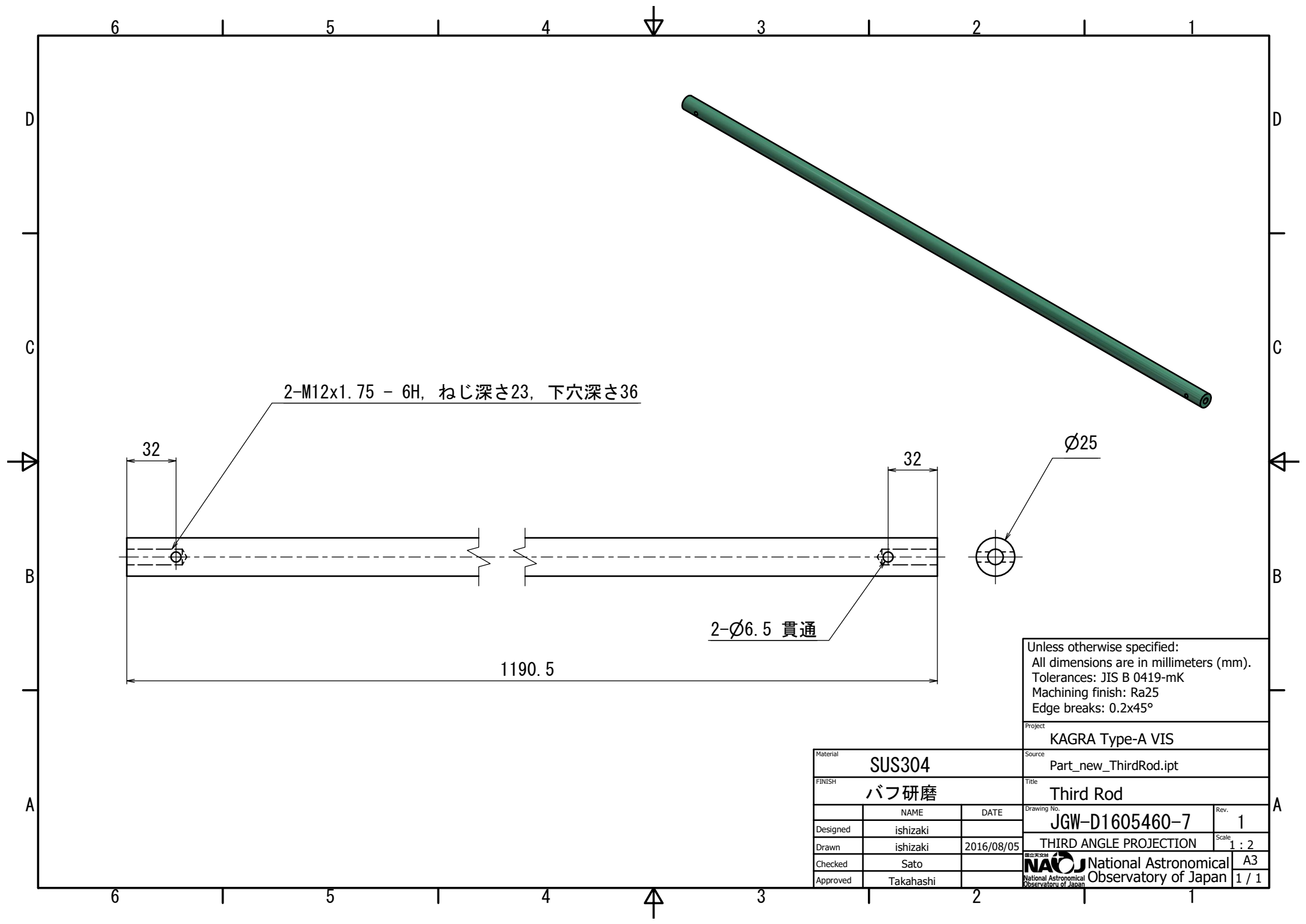
Scale
1 : 2

Approved
 Takahashi

NAOJ National Astronomical
 Observatory of Japan

Sheet	Total
1 / 1	A3

・ PROMEC No. 267_0012-08



2-M12x1.75 - 6H, ねじ深さ23, 下穴深さ36

32

32

1190.5

2- ϕ 6.5 貫通

ϕ 25

Unless otherwise specified:
 All dimensions are in millimeters (mm).
 Tolerances: JIS B 0419-mK
 Machining finish: Ra25
 Edge breaks: 0.2x45°

Project
 KAGRA Type-A VIS

Material	SUS304	
FINISH	バフ研磨	
Designed	ishizaki	
Drawn	ishizaki	2016/08/05
Checked	Sato	
Approved	Takahashi	

Source
 Part_new_ThirdRod.ipt

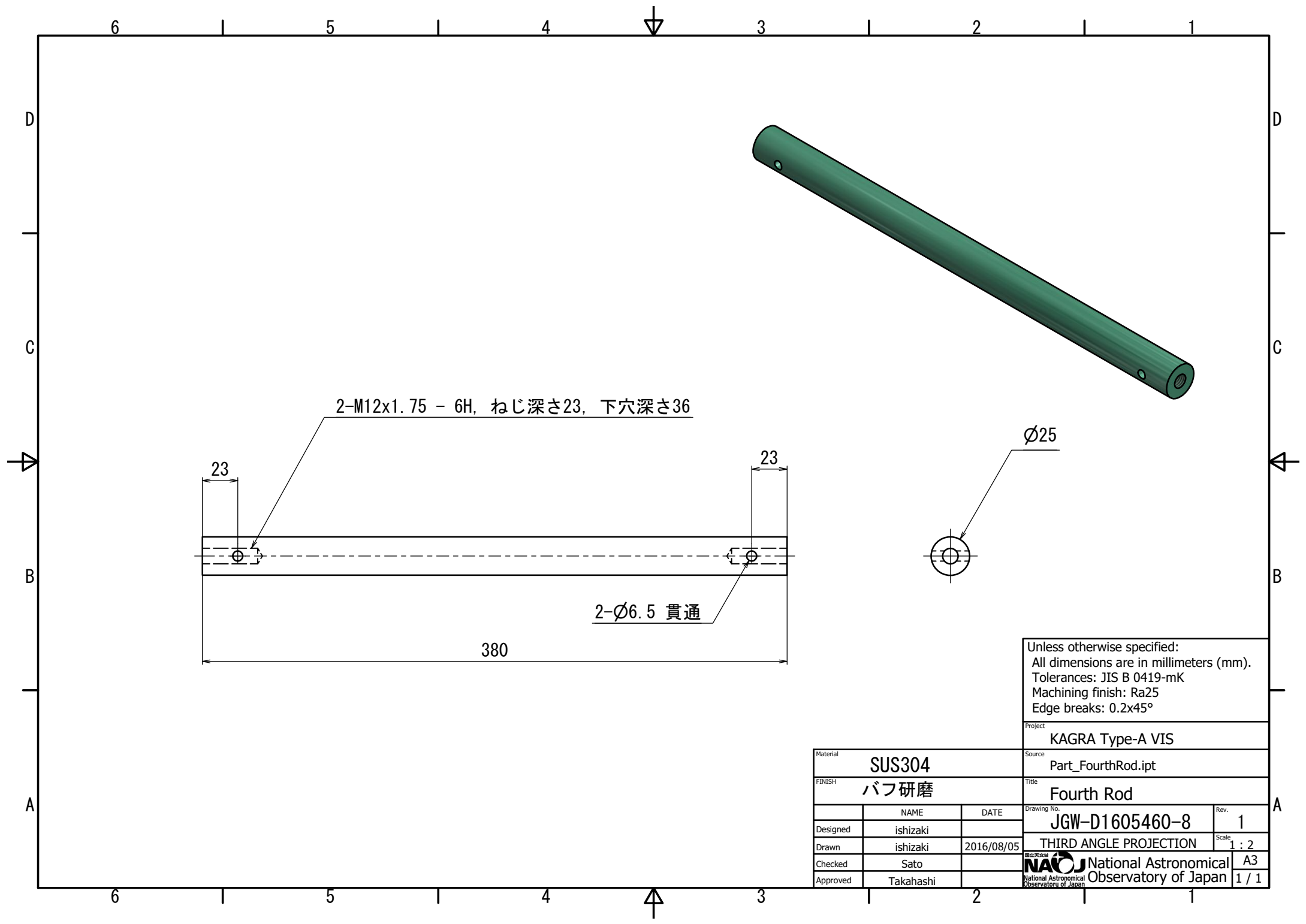
Title
 Third Rod

Drawing No. JGW-D1605460-7 Rev. 1

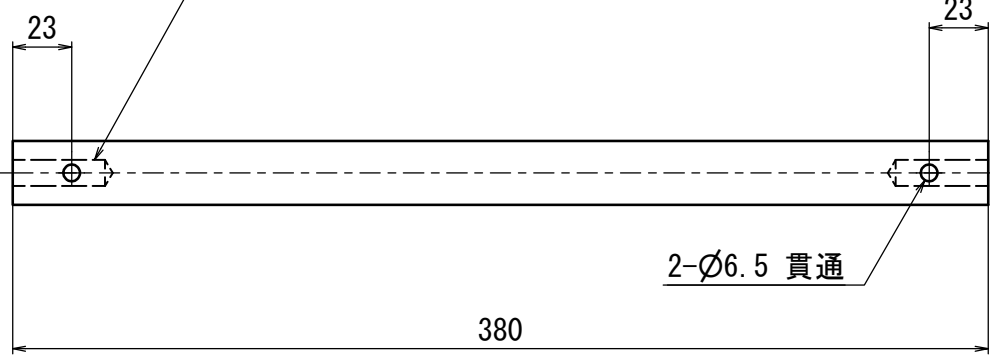
Scale 1 : 2

THIRD ANGLE PROJECTION
 A3
 1 / 1



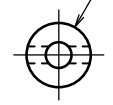


2-M12x1.75 - 6H, ねじ深さ23, 下穴深さ36



2- ϕ 6.5 貫通

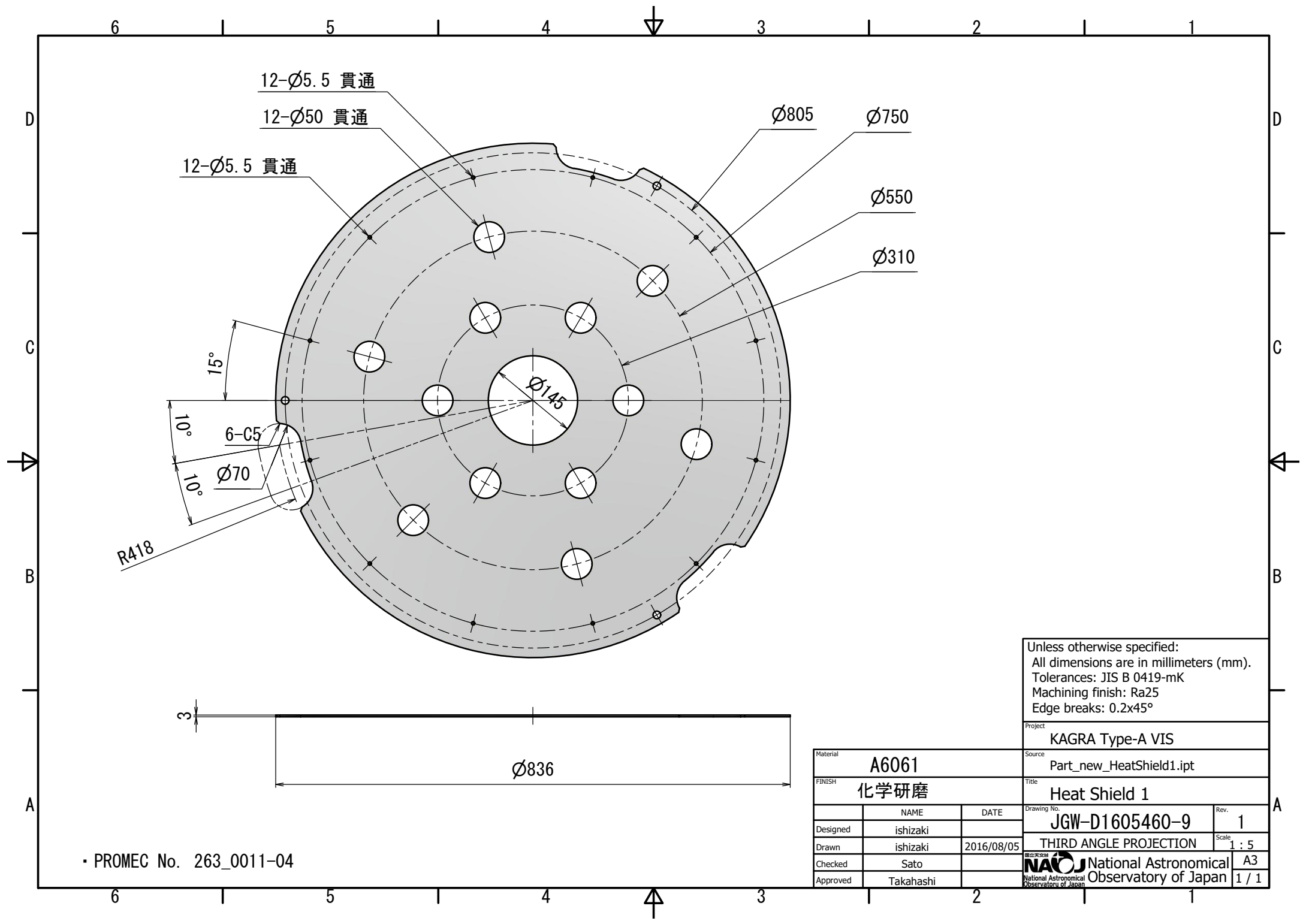
ϕ 25



Unless otherwise specified:
 All dimensions are in millimeters (mm).
 Tolerances: JIS B 0419-mK
 Machining finish: Ra25
 Edge breaks: 0.2x45°

Project
 KAGRA Type-A VIS

Material SUS304		Source Part_FourthRod.ipt	
FINISH バフ研磨		Title Fourth Rod	
	NAME	DATE	Drawing No. JGW-D1605460-8
Designed	ishizaki		Rev. 1
Drawn	ishizaki	2016/08/05	Scale 1 : 2
Checked	Sato		THIRD ANGLE PROJECTION
Approved	Takahashi		NAOJ National Astronomical Observatory of Japan
			A3 1 / 1



12- \varnothing 5.5 貫通

12- \varnothing 50 貫通

12- \varnothing 5.5 貫通

\varnothing 805

\varnothing 750

\varnothing 550

\varnothing 310

\varnothing 145

15°

10°

10°

6-C5

\varnothing 70

R418

3

\varnothing 836

Unless otherwise specified:
 All dimensions are in millimeters (mm).
 Tolerances: JIS B 0419-mK
 Machining finish: Ra25
 Edge breaks: 0.2x45°

Project
 KAGRA Type-A VIS

Material
 A6061

Source
 Part_new_HeatShield1.ipt

FINISH
 化学研磨

Title
 Heat Shield 1

	NAME	DATE
Designed	ishizaki	
Drawn	ishizaki	2016/08/05
Checked	Sato	
Approved	Takahashi	

Drawing No.
 JGW-D1605460-9

Rev.
 1

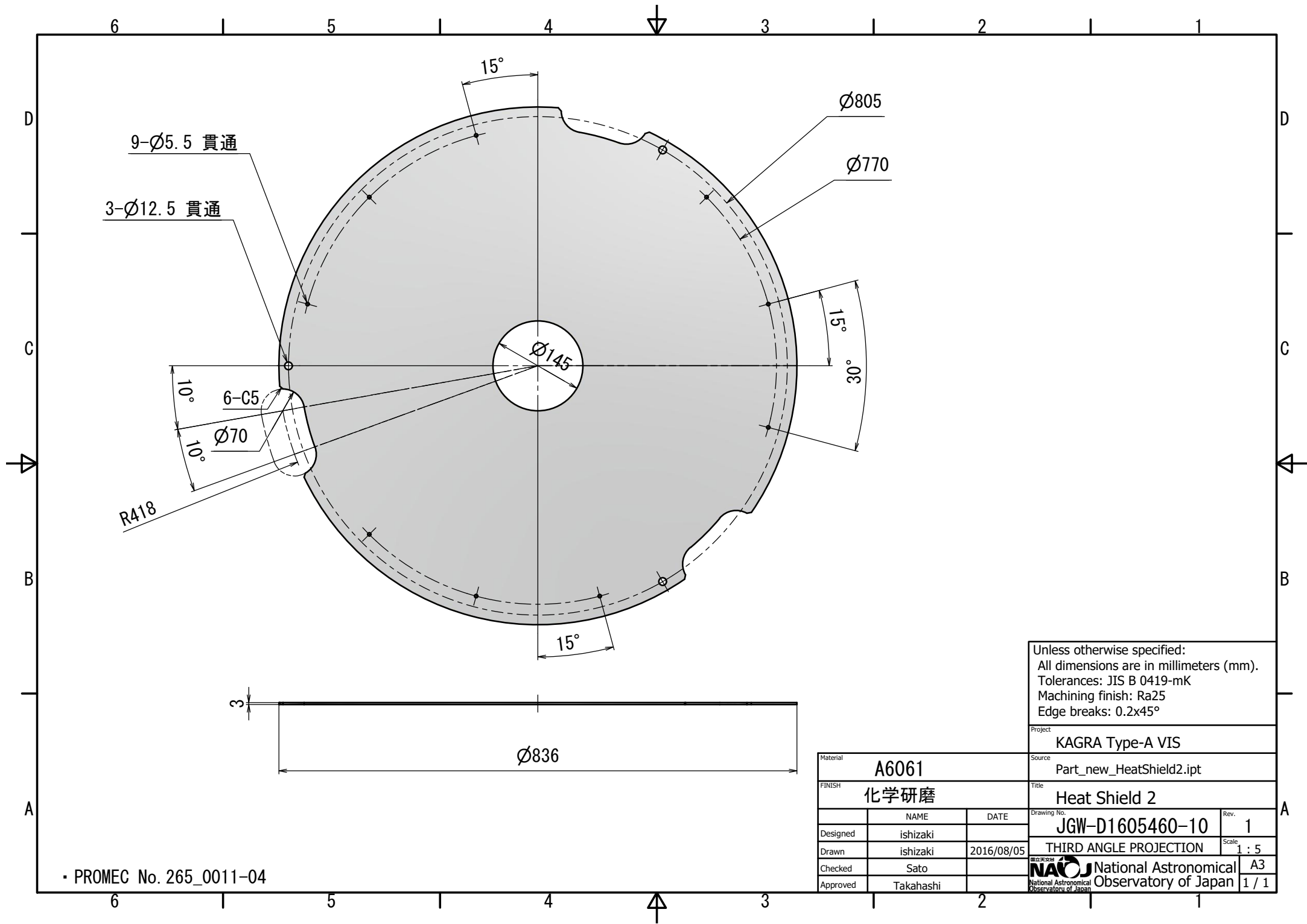
THIRD ANGLE PROJECTION

Scale
 1 : 5

Sheet No.
 A3
 1 / 1

• PROMEC No. 263_0011-04

NAOJ National Astronomical
 Observatory of Japan



Unless otherwise specified:
 All dimensions are in millimeters (mm).
 Tolerances: JIS B 0419-mK
 Machining finish: Ra25
 Edge breaks: 0.2x45°

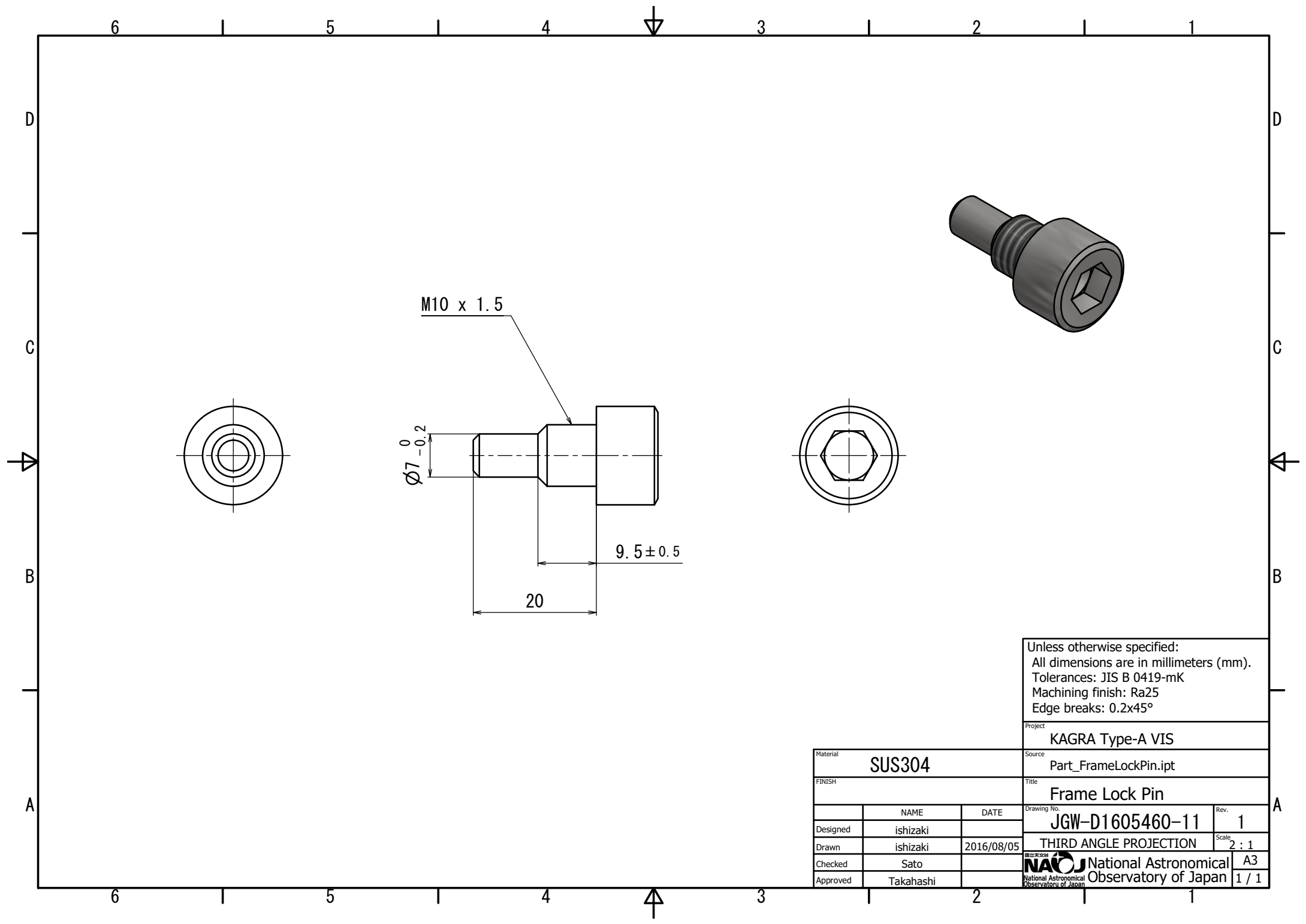
Project
 KAGRA Type-A VIS

Material
 A6061
 Source
 Part_new_HeatShield2.ipt

FINISH	化学研磨		Title	Heat Shield 2	
Designed	ishizaki	DATE	Drawing No.	JGW-D1605460-10	Rev. 1
Drawn	ishizaki	2016/08/05	THIRD ANGLE PROJECTION		Scale 1 : 5
Checked	Sato		National Astronomical Observatory of Japan		A3
Approved	Takahashi		National Astronomical Observatory of Japan		1 / 1

Project
 KAGRA Type-A VIS

• PROMEC No. 265_0011-04



Unless otherwise specified:
 All dimensions are in millimeters (mm).
 Tolerances: JIS B 0419-mK
 Machining finish: Ra25
 Edge breaks: 0.2x45°

Project
 KAGRA Type-A VIS

Material			SUS304		
FINISH					
Designed	ishizaki	DATE			
Drawn	ishizaki	2016/08/05			
Checked	Sato				
Approved	Takahashi				

Source
 Part_FrameLockPin.ipt

Title
 Frame Lock Pin

Drawing No.
 JGW-D1605460-11

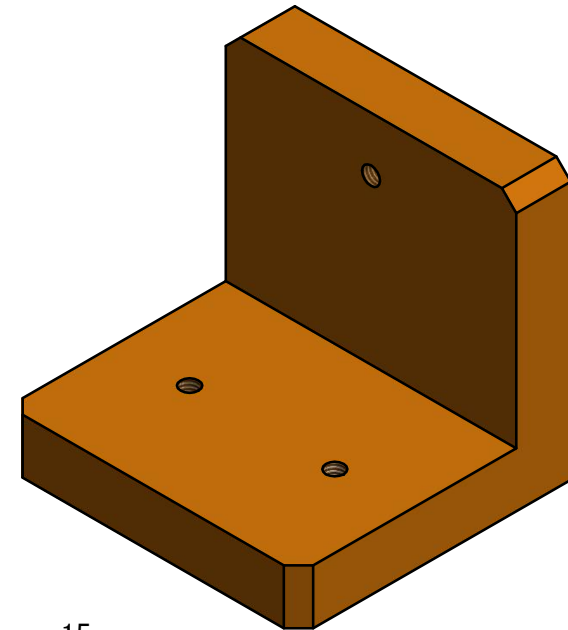
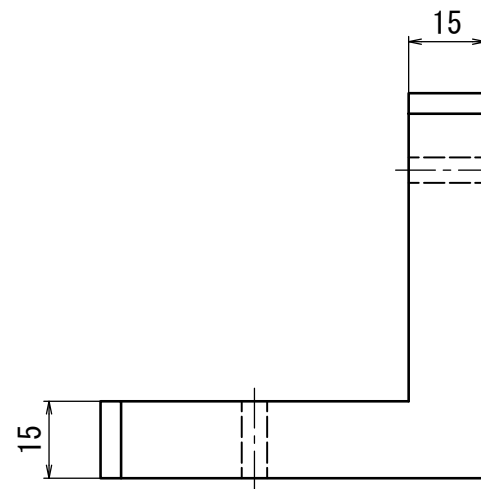
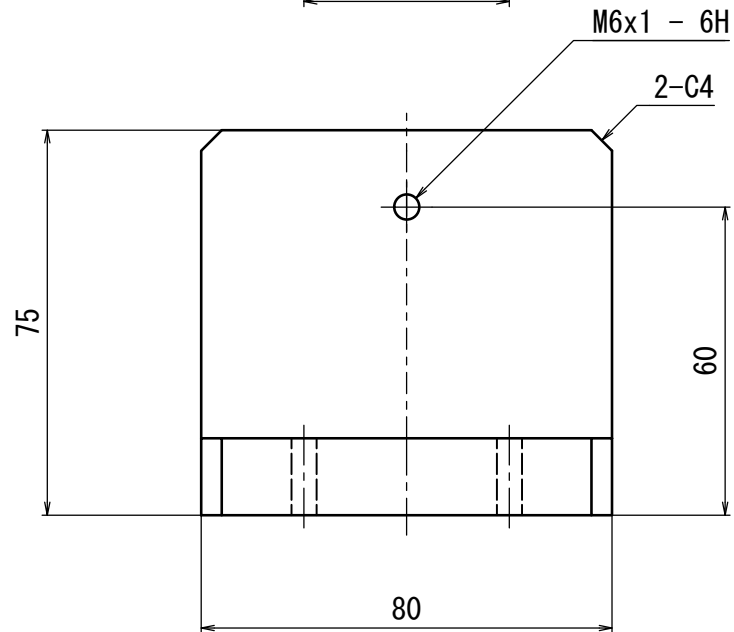
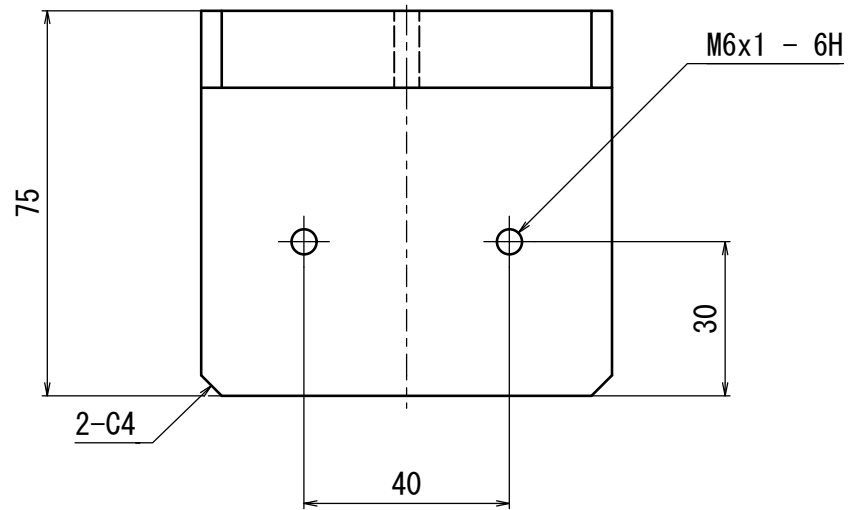
Rev.
 1

Scale
 2 : 1

THIRD ANGLE PROJECTION

NAOJ National Astronomical
 Observatory of Japan

A3
 1 / 1



Unless otherwise specified:
 All dimensions are in millimeters (mm).
 Tolerances: JIS B 0419-mK
 Machining finish: Ra25
 Edge breaks: 0.2x45°

Project
 KAGRA Type-A VIS

Material
 A6061

Source
 Part_stopper_filters.ipt

FINISH
 化学研磨

Title
 Stopper Filters

NAME DATE

Designed ishizaki

Drawn ishizaki 2016/08/05

Checked Sato

Approved Takahashi

Drawing No.
 JGW-D1605460-12

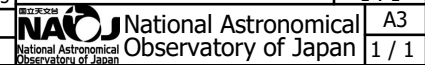
Rev.
 1

Scale
 1 : 1

THIRD ANGLE PROJECTION

A3

1 / 1



• PROMEC No. 354_10009-01