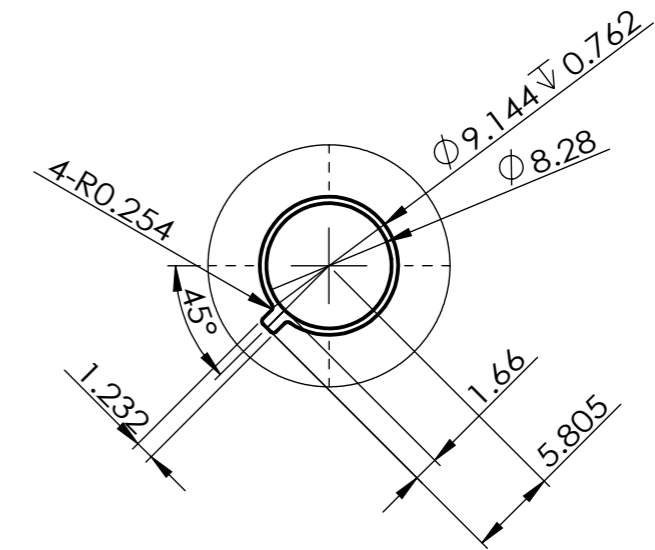
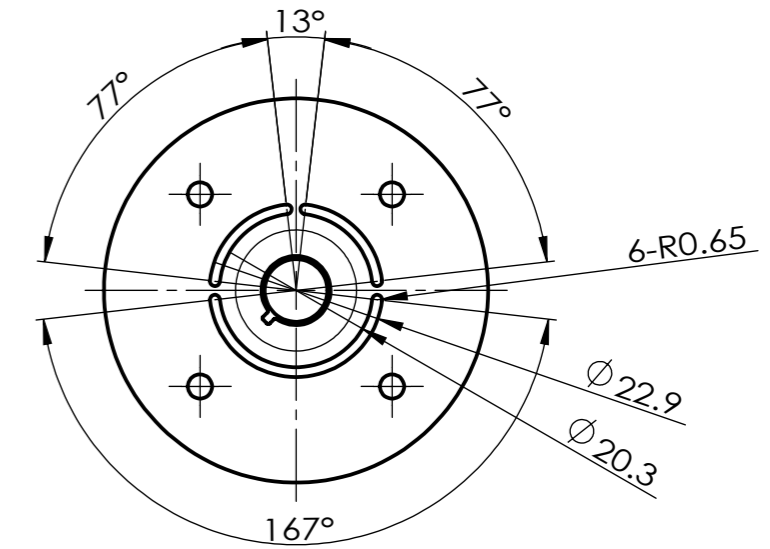
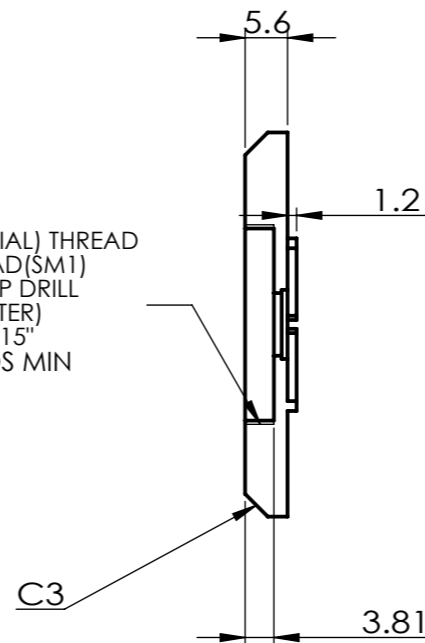


ENGLISH (IMPERIAL) THREAD
1.035"-40 THREAD (SM1)
USE A 1.008" TAP DRILL
(MINOR DIAMETER)
TO DEPTH OF 0.15"
5 or 6 THREADS MIN



スケール 2 : 1

*D1101176 v6背面部と 勘合チェックすること

記号	面取り部分を除く長さの基準寸法の区分と許容差						面取り部分の長さの基準寸法の区分と許容差			角度の基準寸法(対象とする角度の短い辺の長さ)の区分と許容差				
	0.5~3 mm	3~6 mm	6~30 mm	30~120 mm	120~400 mm	0.4~1 m	0.5~3 mm	3~6 mm	6 mm<	10 mm>	10~50 mm	50~120 mm	120~400 mm	400 mm<
公差等級	±0.05	±0.05	±0.15	±0.1	±0.2	±0.3	±0.2	±0.3	±0.5	±1°	±30'	±20'	±10'	±5'
精級	±0.05	±0.05	±0.15	±0.1	±0.2	±0.3	±0.2	±0.3	±0.5	±1°	±30'	±20'	±10'	±5'

NOTES AND TOLERANCES: (UNLESS OTHERWISE SPECIFIED)

1. MODIFIED DRAWING PER ASME Y4.11-2015
2. REMOVE ALL SHARP EDGES, .05 FOR MACHINED PARTS, ROUND ALL EDGES APPROXIMATELY R.02 FOR SHEET METAL PARTS.
3. DO NOT SCALE FROM DRAWING.
4. ALL MACHINING FLUIDS MUST BE FULLY SYNTHETIC, FULLY WATER SOLUBLE AND FREE OF SULFUR, SILICONE, AND CHLORINE.

MATERIAL PEEK-VICTREX 450GL30 FINISH μmm

First Class Light Inc.		PART NAME LSC IN-AIR Enclosure - photo hood		
SYSTEM	SUB-SYSTEM	DESIGNER H.Matsura	DWG. NO. JGW-E1504476-v0	REV. v0
NEXT ASSY		DRAFTER Y.Yamaguchi	modified from LIGO:D1101178	
		CHECKER	SCALE: 2:1	PROJECTION:
		APPROVAL	SHEET 1 OF 1	