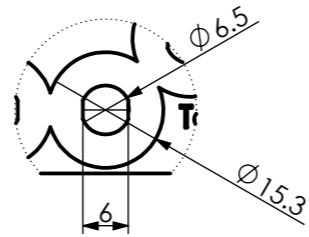
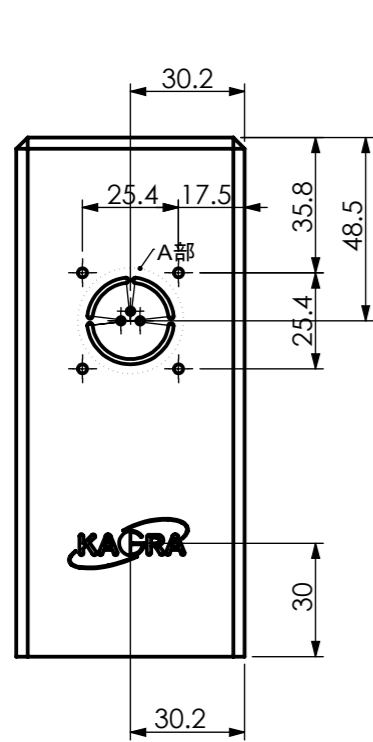
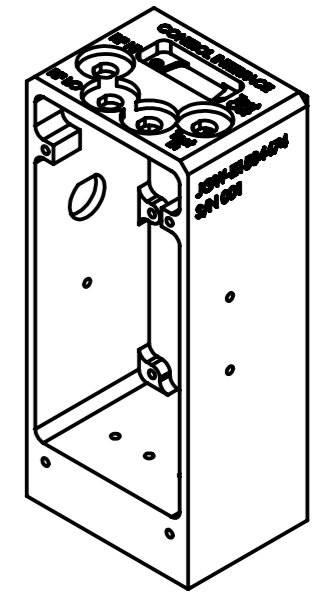
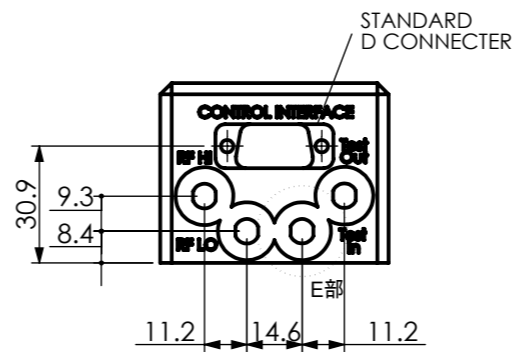


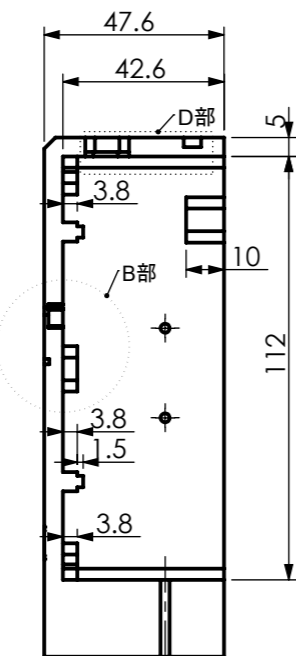
D部 SCALE 1:1



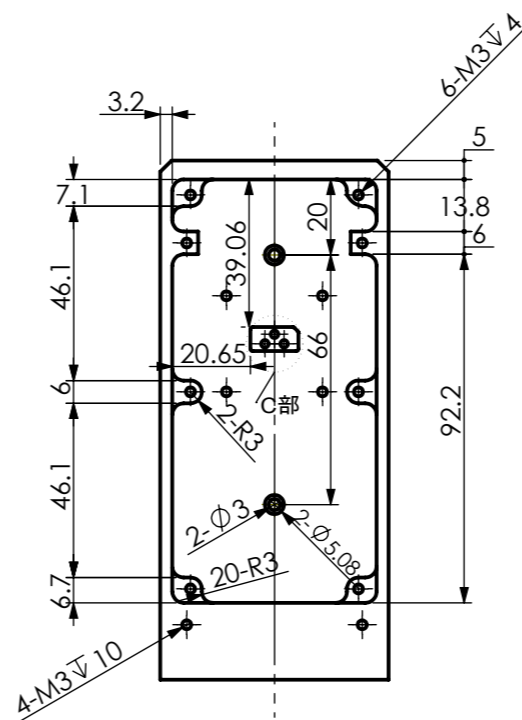
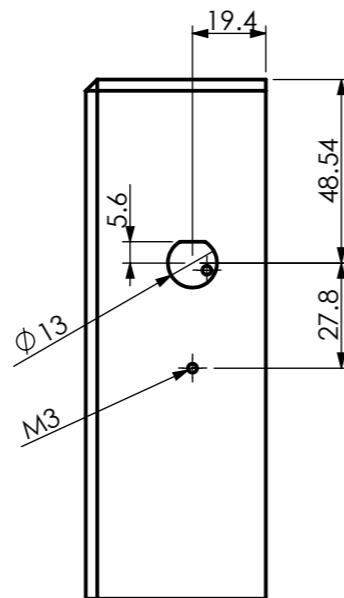
E部 SCALE 1:1
4-SMA CONNECTER



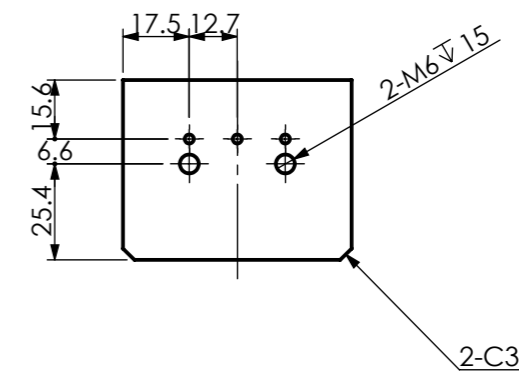
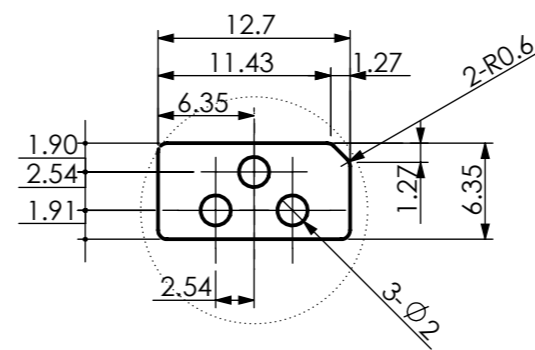
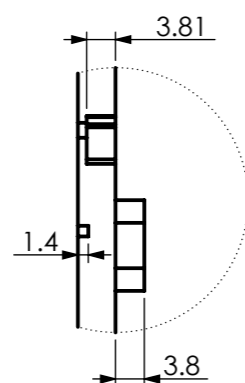
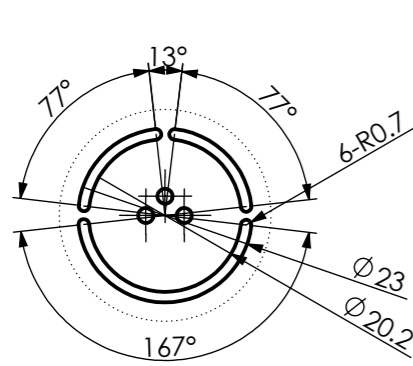
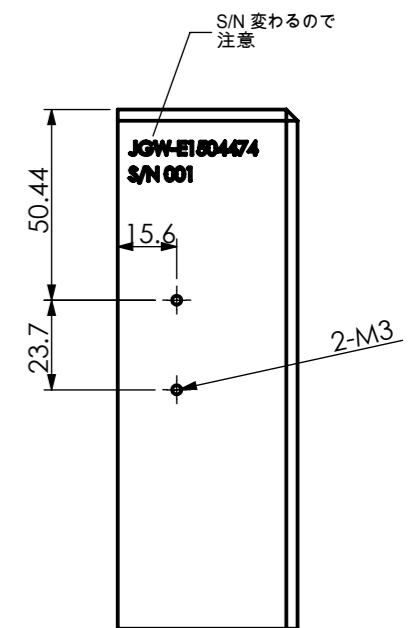
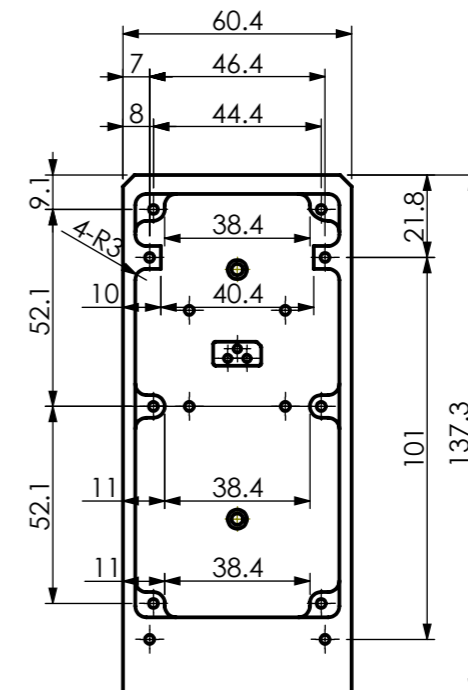
A部 SCALE 1:1



B部 SCALE 1:1



C部 SCALE 2:1



公差等級	面取り部分を除く長さの基準寸法の区分と許容差						面取り部分の長さの基準寸法の区分と許容差				角度の基準寸法(対象とする角度の短い辺の長さ)の区分と許容差								
	0.5-3 mm	3-6 mm	6-30 mm	30-120 mm	120-400 mm	0.4-1 m	0.5-3 mm	3-6 mm	6 mm <	10 mm >	10-50 mm	50-120 mm	120-400 mm	400 mm <	±1°	±30'	±20'	±10'	±5'
記号	0.5-3 mm	3-6 mm	6-30 mm	30-120 mm	120-400 mm	0.4-1 m	0.5-3 mm	3-6 mm	6 mm <	10 mm >	10-50 mm	50-120 mm	120-400 mm	400 mm <	±1°	±30'	±20'	±10'	±5'
精度	±0.05	±0.05	±0.15	±0.1	±0.2	±0.3	±0.2	±0.3	±0.5	±1°	±30'	±20'	±10'	±5'					

NOTES AND TOLERANCES: (UNLESS OTHERWISE SPECIFIED)

1. MODIFIED DRAWING PER ASME Y6.11-2015
2. REMOVE ALL SHARP EDGES, .05 FOR MACHINED PARTS, ROUND ALL EDGES APPROXIMATELY R.02 FOR SHEET METAL PARTS.
3. DO NOT SCALE FROM DRAWING.
4. ALL MACHINING FLUIDS MUST BE FULLY SYNTHETIC, FULLY WATER SOLUBLE AND FREE OF SULFUR, SILICONE, AND CHLORINE.

MATERIAL	A5052	FINISH	μmm
----------	-------	--------	-----

First Class Light Inc.		PART NAME		LSC IN-AIR Enclosure - main body	
SYSTEM	SUB-SYSTEM	DESIGNER	H.Matsura	DWG. NO.	JGW-E1504474-v0
		DRAFTER	Y.Yamaguchi		modified from LIGO:D1101176
		CHECKER		REV.	v0
		APPROVAL		SCALE: 1:2	PROJECTION: SHEET 1 OF 1