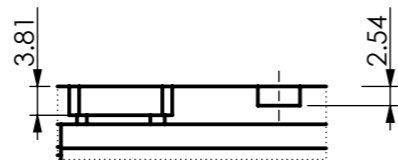
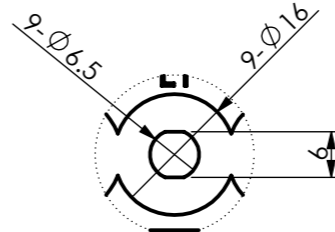


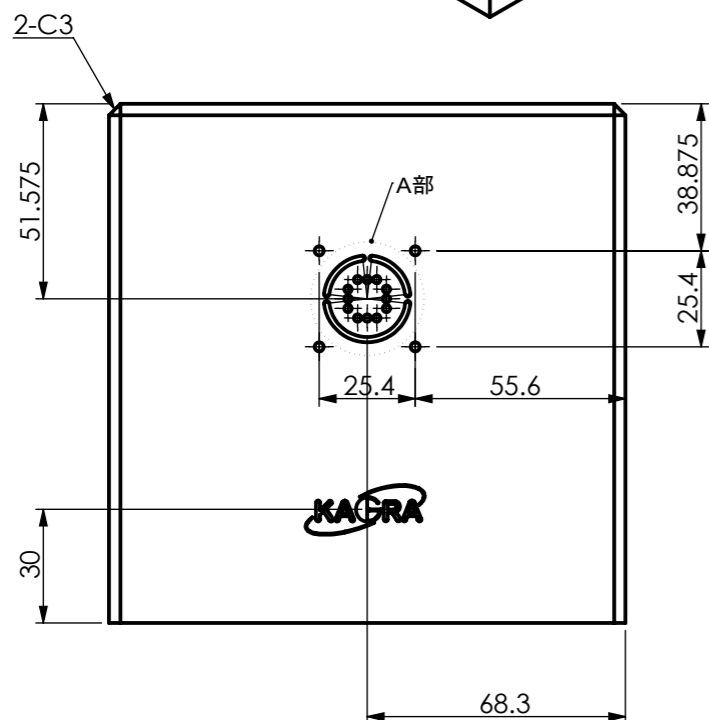
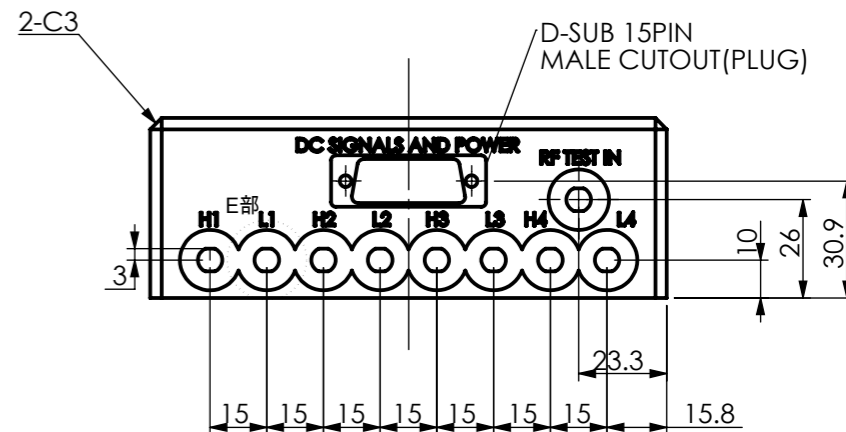
S/Nが変わるので注意



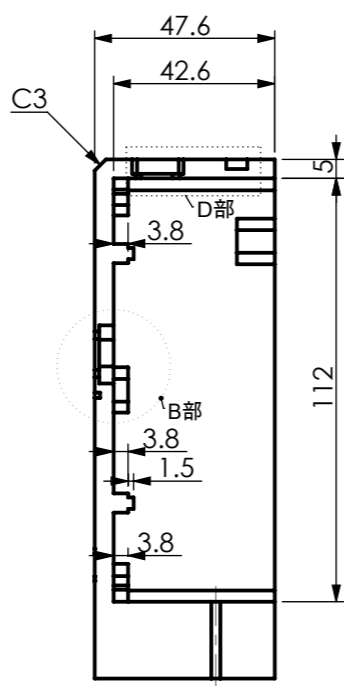
D部 SCALE 1 : 1



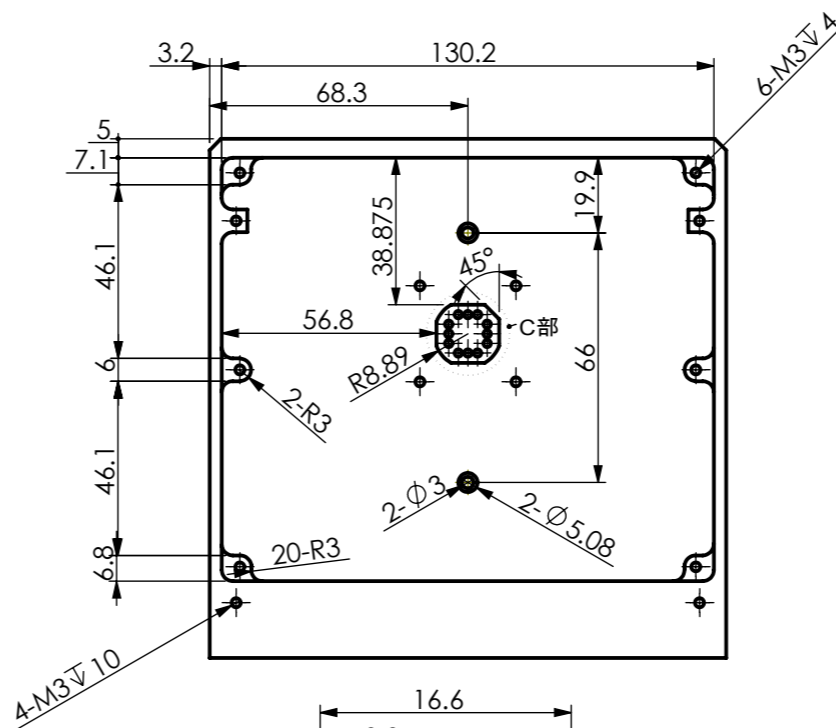
E部 SCALE 1 : 1
(9-SMA CONNECTER)



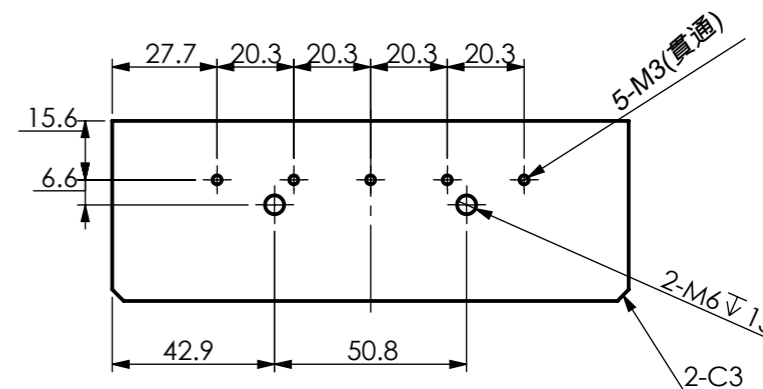
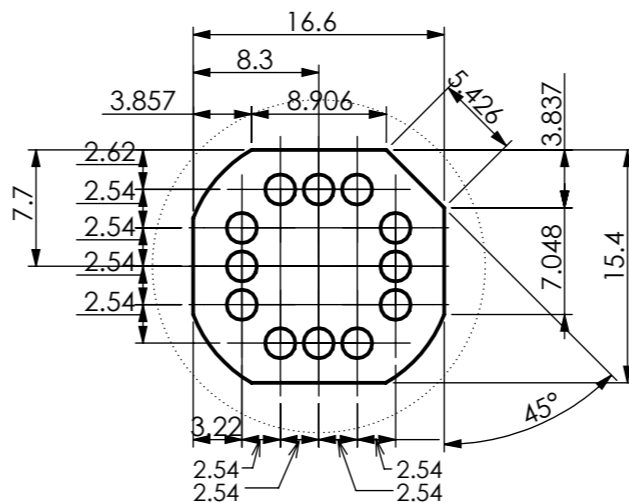
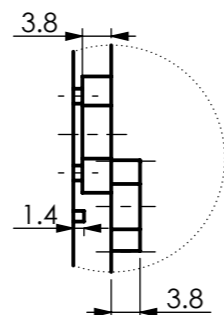
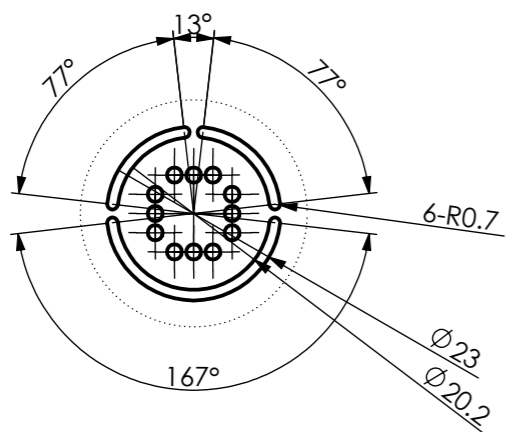
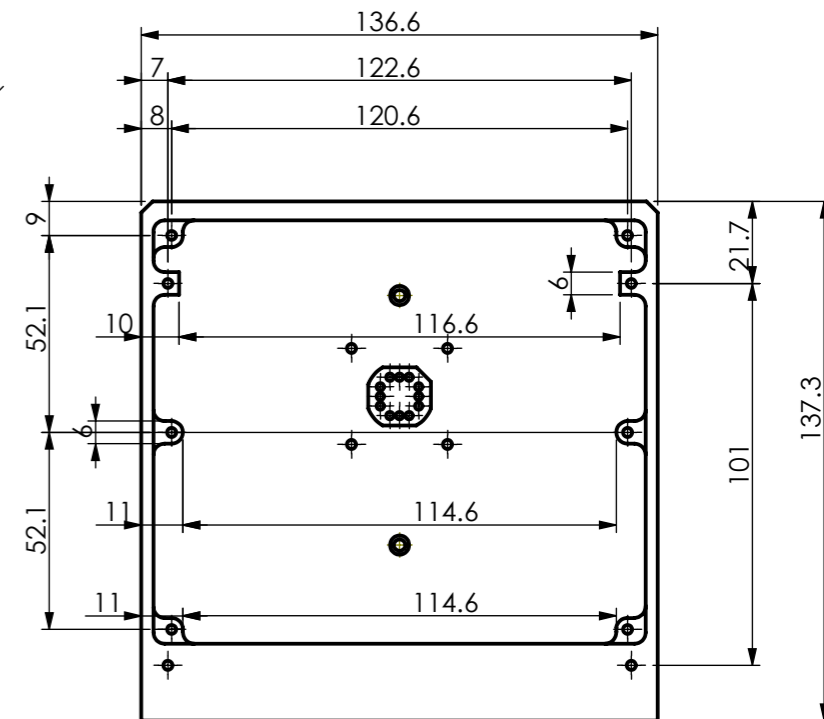
A部 SCALE 1 : 1



B部 SCALE 1 : 1



C部 SCALE 2 : 1



公差等級	面取り部分を除く長さの基準寸法の区分と許容差					面取り部分の長さの基準寸法の区分と許容差				角度の基準寸法(対象とする角度の短い辺の長さ)の区分と許容差										
	0.5-3 mm	3-6 mm	6-30 mm	30-120 mm	120-400mm	0.4-1 m	0.5-3 mm	3-6 mm	6 mm<	10 mm>	10-50 mm	50-120 mm	120-400 mm	400 mm<	1°	±30'	±20'	±10'	±5'	
記号	説明	±0.05	±0.05	±0.15	±0.1	±0.2	±0.3	±0.2	±0.3	±0.5	±1°	±30'	±20'	±10'	±5'					
!	精級																			

NOTES AND TOLERANCES: (UNLESS OTHERWISE SPECIFIED)		First Class Light Inc.		PART NAME					
1. MODIFIED DRAWING PER ASME Y6.11-2015				ASC_IN-AIR_Enclosure - main body					
2. REMOVE ALL SHARP EDGES, .05 FOR MACHINED PARTS, ROUND ALL EDGES APPROXIMATELY R.02 FOR SHEET METAL PARTS.		SYSTEM	SUB-SYSTEM	DESIGNER	H.Matsuura	DWG. NO.	JGW-E1504466-v1	REV.	v0
3. DO NOT SCALE FROM DRAWING.				DRAFTER	Y.Yamaguchi		modified from		
4. ALL MACHINING FLUIDS MUST BE FULLY SYNTHETIC, FULLY WATER SOLUBLE AND FREE OF SULFUR, SILICONE, AND CHLORINE.				CHECKER			LIGO:D1101202		
MATERIAL	A5052	FINISH	μm	NEXT ASSY		SCALE: 1:2	PROJECTION:	SHEET 1 OF 1	