

March 18, 2015

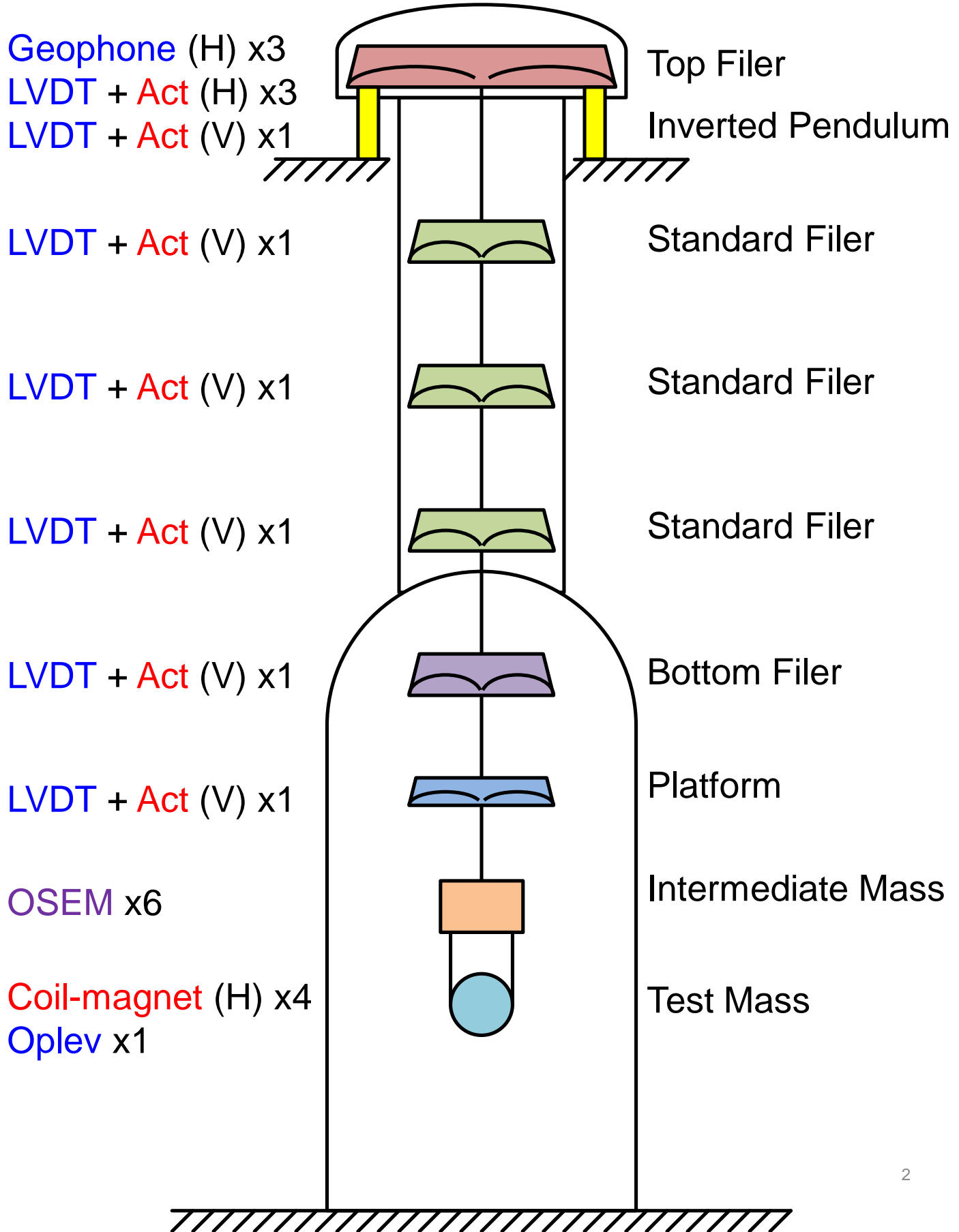
# Summary of Suspension Configurations

Yuta Michimura

Department of Physics, University of Tokyo

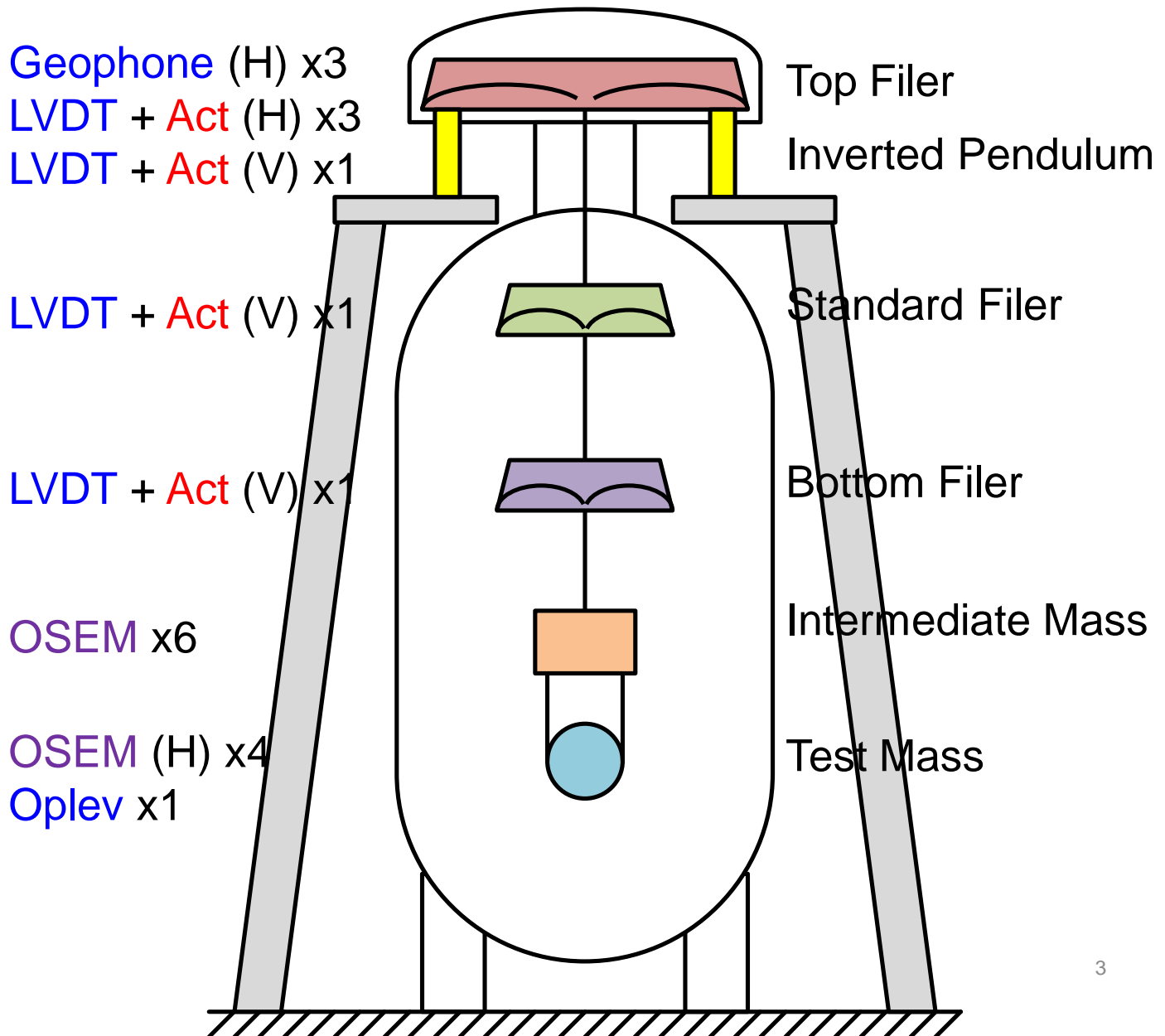
# Type-A Suspension

- For bKAGRA ITM, ETM



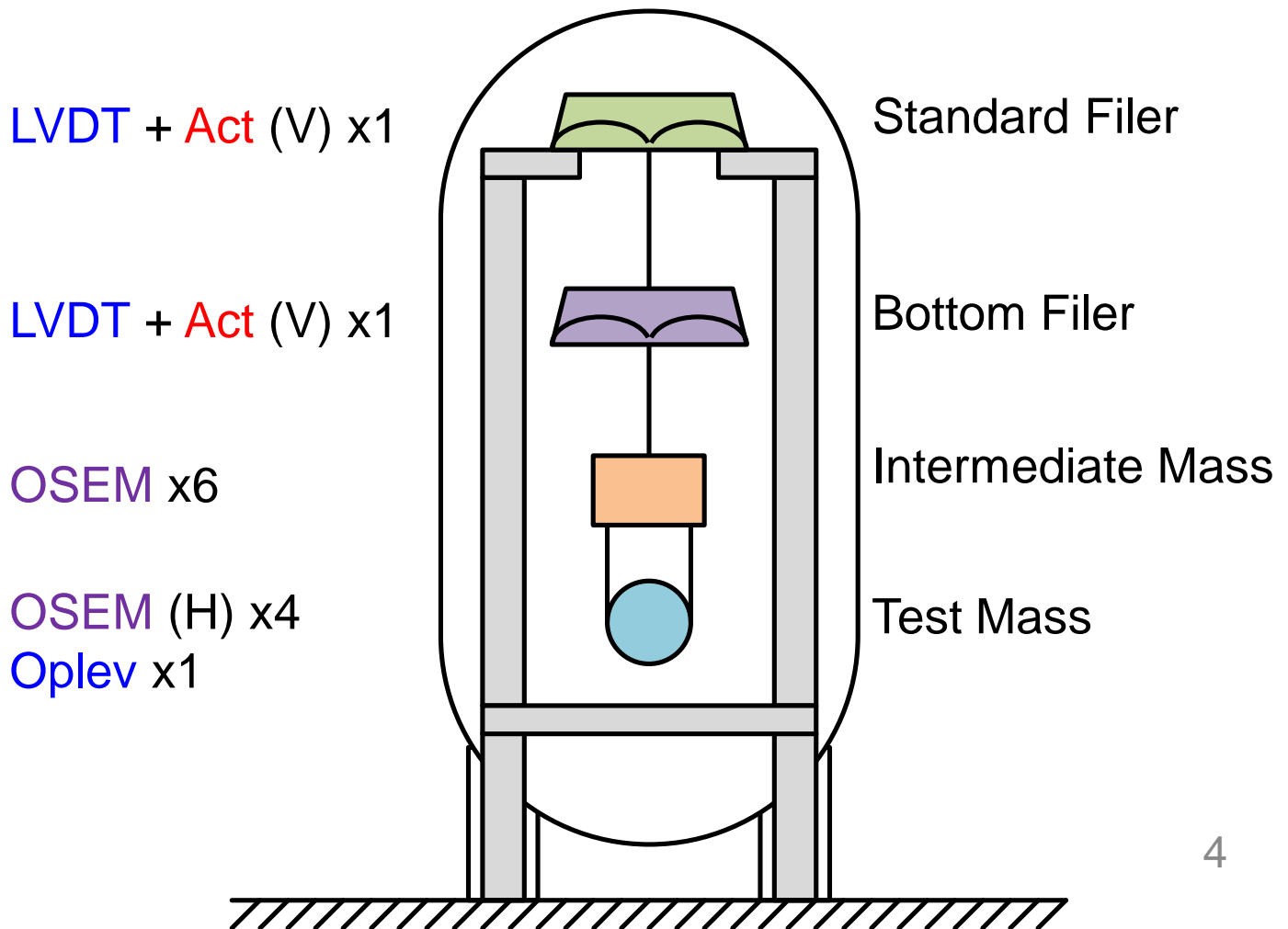
# Type-B Suspension

- For BS, SRM, SR2, SR3



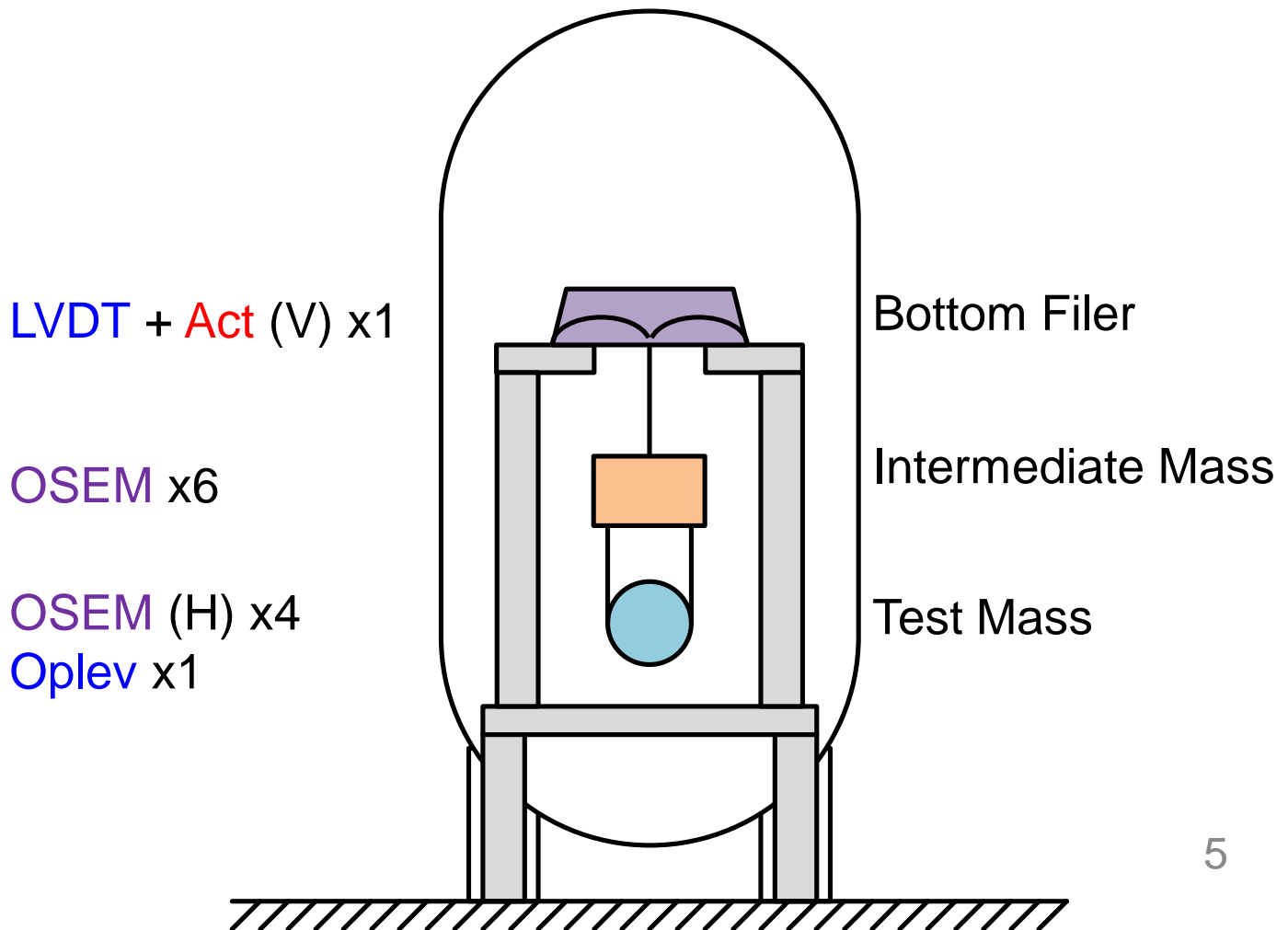
# Type-Bp Suspension

- For PRM, PR2, PR3



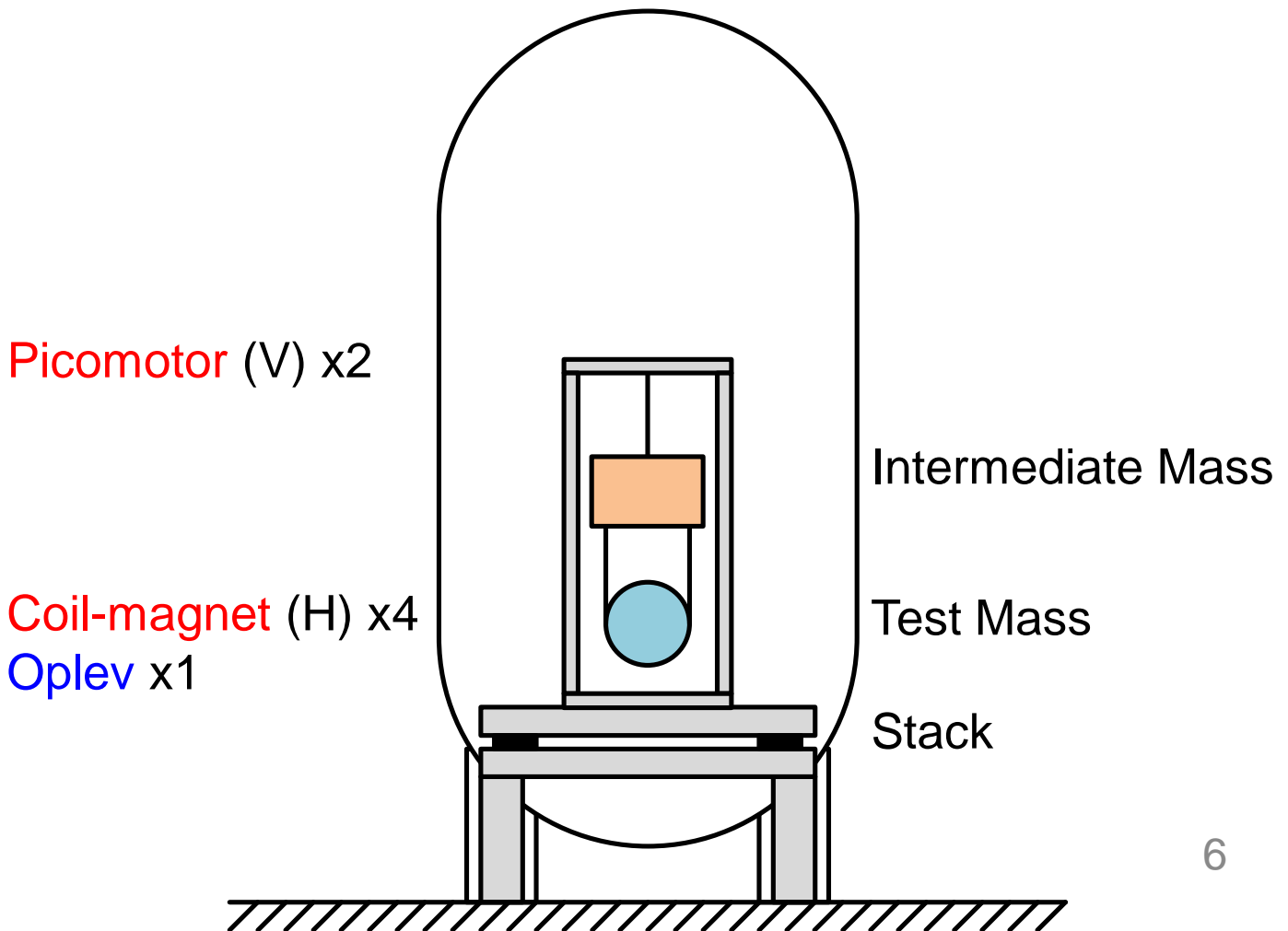
# Fixed Type-Bp Suspension

- For iKAGRA ITM, ETM



# Type-C Suspension

- For M<sub>Ci</sub>, M<sub>Co</sub>, M<sub>Ce</sub>, and other input output optics



# References

- See wiki page [AssemblyStatus](#) for the assembly status of suspensions
- See [JGW-T1402170](#) for sensors and actuators arrangement of Type-A suspension
- Suspension performance below

