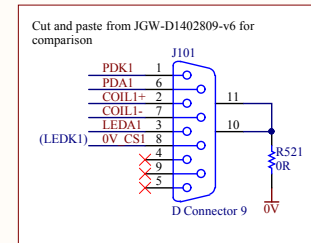
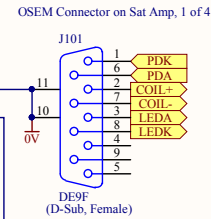
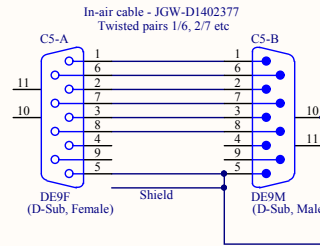
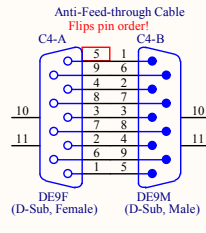
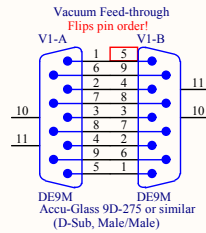
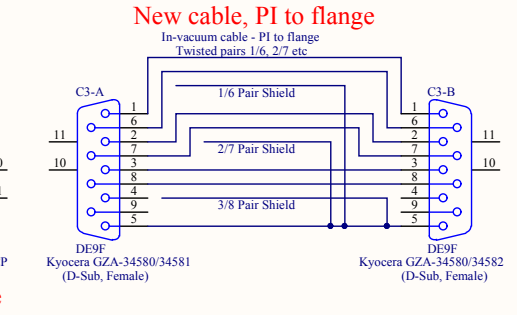
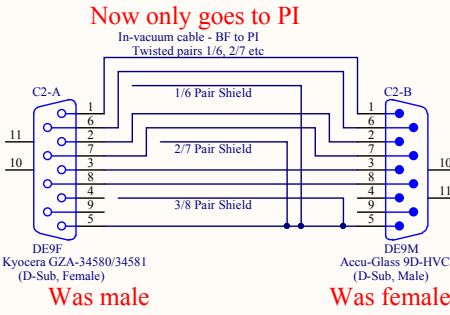
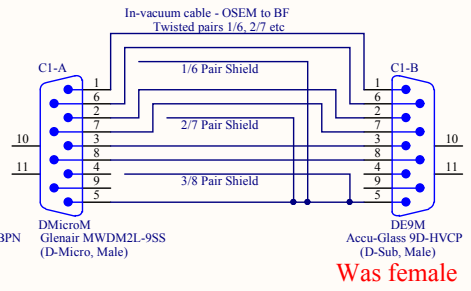
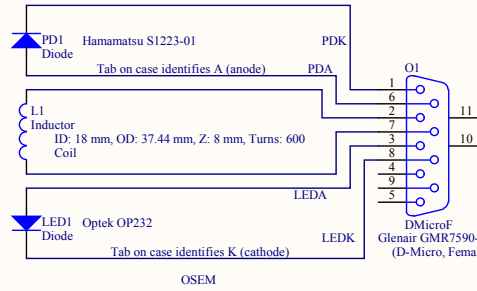


OSEM to Sat Amp Cabling JGW-T1403037-v3, 08 Jun 2015, for discussion.  
 Relative to -v2, adds extra cable from preisolator to flange (allowing break-point at PI),  
 and swaps various genders.



Title OSEM to Sat Amp Cabling		
Size A3	Number JGW-T1403037	Revision -v3
Date: 1 2015/06/08	Sheet 1 of 1	Drawn By: Mark Barton
File: Z:\Work\OSEM_cabling.SchDoc		