

28m

(+2m)

MCE ↔ IO rack (42m)

(+2m)

indicates height difference

MCE oplev ↔ MC rack (40m)

5m

MC rack is moved from the position drawn in [JGW-D1100425](#)

Cable ditch in between PSL and MCF is not drawn in [JGW-D1403018](#) but is there

To MCE

(+2m)

2m

cable ditch

Vertex PSL ↔ IO rack (18m)

MCi/o oplev ↔ MC rack (12m)

実験室 B

(+2m)

OW

2.5m

MCF

GVm

IF1

IMM

PRM

PR3

(+1m)

(+2m)

(+1m)

(+2m)

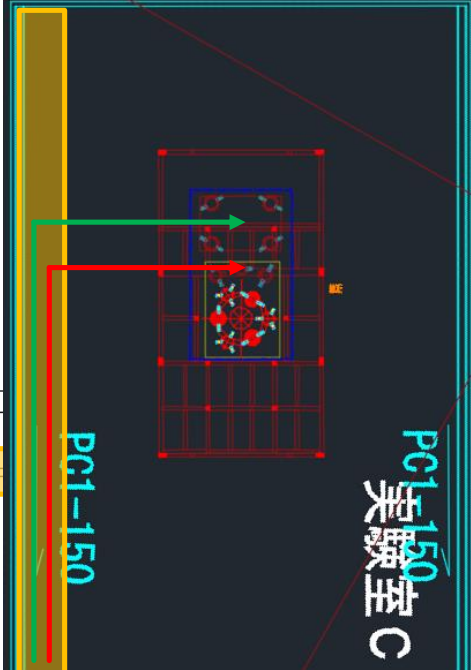
IMC REFL ↔ IO rack (8m)

MMT PRM

4.5m

3m

cable rack



Y end

X end

PQY

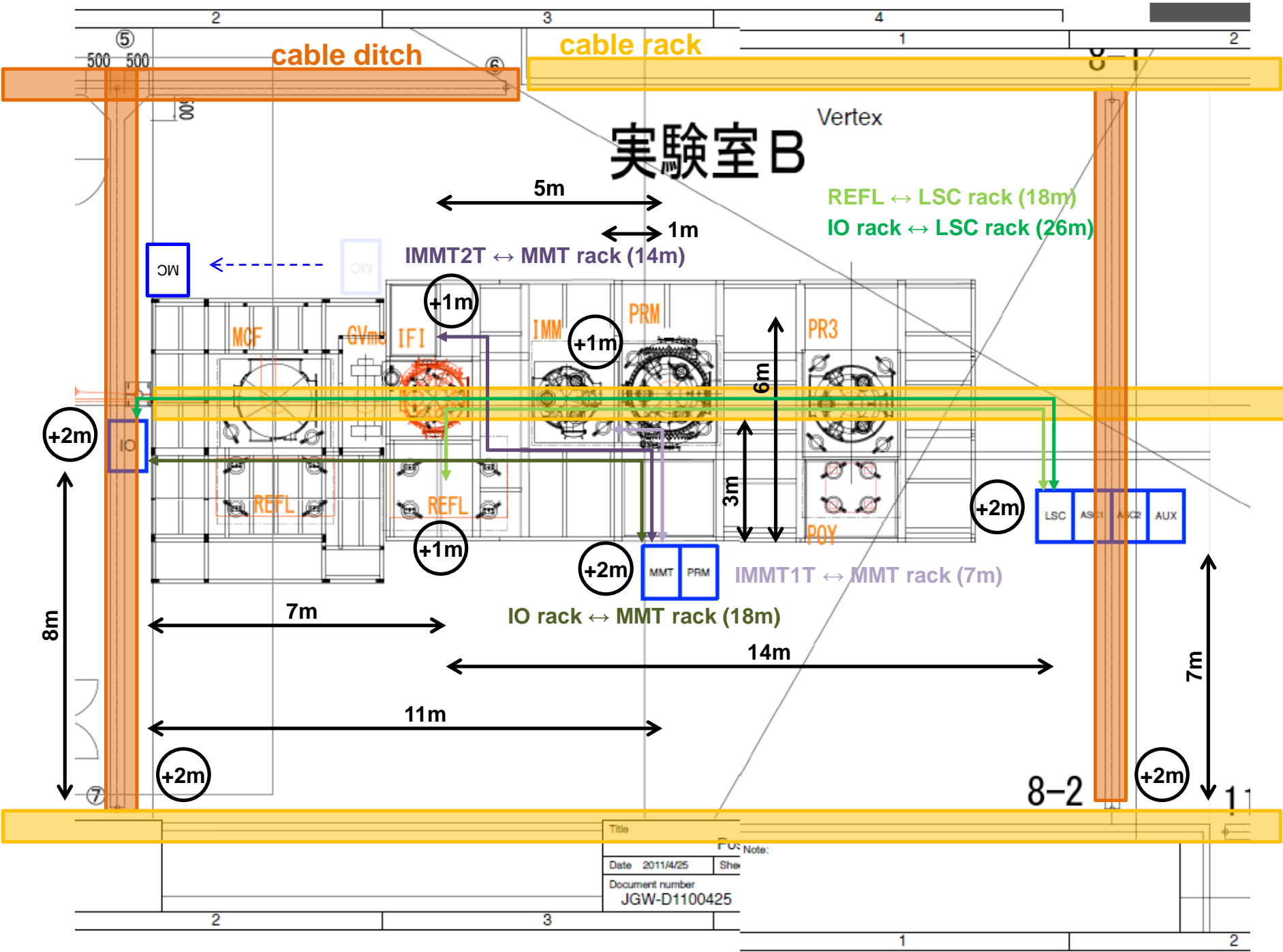
Note:

Title

Position of digital system racks

Date 2011/4/25	Sheet 1 of 1	Size A3	rev. 0 2011/4/25
Document number JGW-D1100425	Drawn by Osamu Miyakawa		rev. 1 2011/5/16

8



# 実験室 B

Vertex

REFL ↔ LSC rack (18m)  
IO rack ↔ LSC rack (26m)

IMMT2T ↔ MMT rack (14m)

IMMT1T ↔ MMT rack (7m)

IO rack ↔ MMT rack (18m)

Title	PU: Note:
Date 2011/4/25	She
Document number JGW-D1100425	