

28m

+2m

MCE ↔ IO rack (42m)

+2m

indicates height difference

MCE oplev ↔ MC rack (40m)

5m

MC rack is moved from the position drawn in [JGW-D1100425](#)

Cable ditch in between PSL and MCF is not drawn in [JGW-D1403018](#) but is there

To MCE

+2m

2m

cable ditch

Vertex PSL ↔ IO rack (16m)

MCi/o oplev ↔ MC rack (12m)

実験室 B

+2m

OW

2.5m

MCF

2m

GVme

IF1

IMM

PRM

PR3

+1m

1m

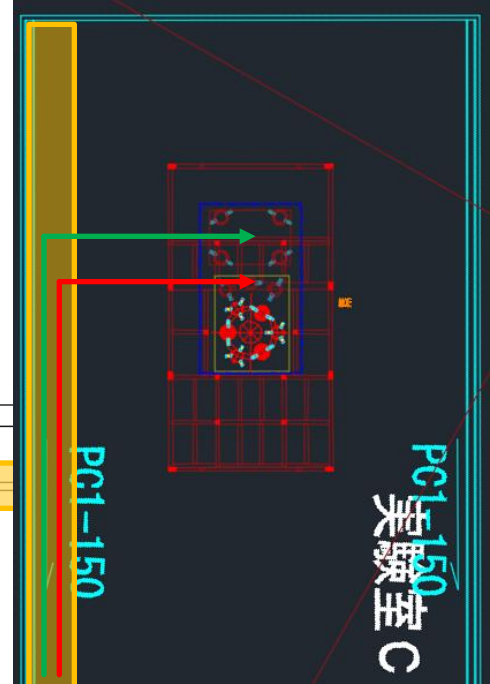
+1m

IMC REFL ↔ IO rack (8m)

4.5m

3m

cable rack



PG1-150

PG1-150 実験室 C

Y end

X end

MMT PRM

Note:

Title

Position of digital system racks

Date 2011/4/25	Sheet 1 of 1	Size A3	rev. 0 2011/4/25
Document number JGW-D1100425	Drawn by Osamu Miyakawa		rev. 1 2011/5/16

8