

28m

(+2m)

MCE ↔ IO rack (42m)

(+2m)

indicates height difference

MCE oplev ↔ MC rack (42m)

5m

To MCE

cable ditch

(+2m)

2m

実験室 B

MCi/o oplev ↔ MC rack (12m)

(+2m)

PSL ↔ IO rack (8m)

(+1m)

2.5m

2m

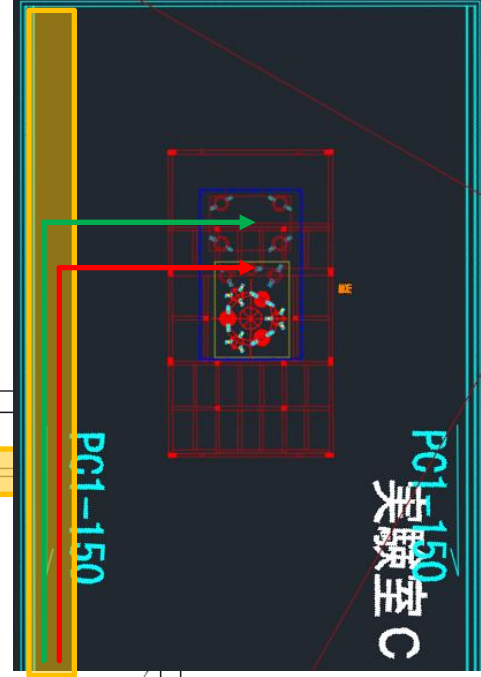
(+1m)

IMC REFL ↔ IO rack (8m)

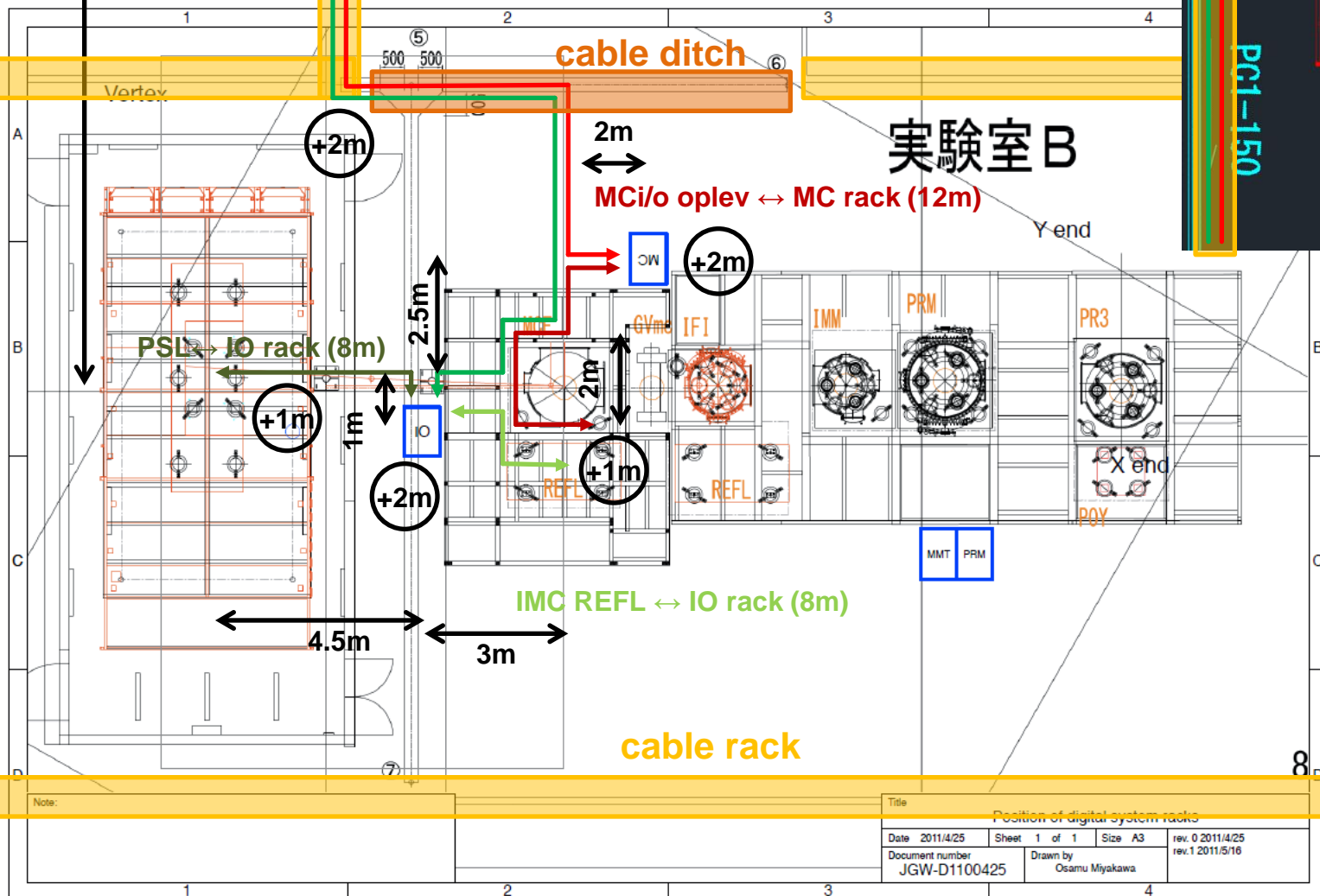
4.5m

3m

cable rack



PC1-150
実験室 C



Note:

Title

Position of digital system racks

Date	2011/4/25	Sheet	1 of 1	Size	A3	rev. 0	2011/4/25
Document number	JGW-D1100425	Drawn by	Osamu Miyakawa	rev. 1	2011/5/16		