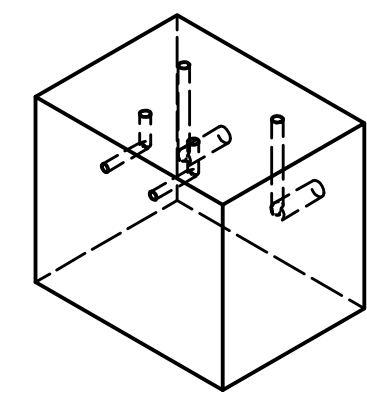
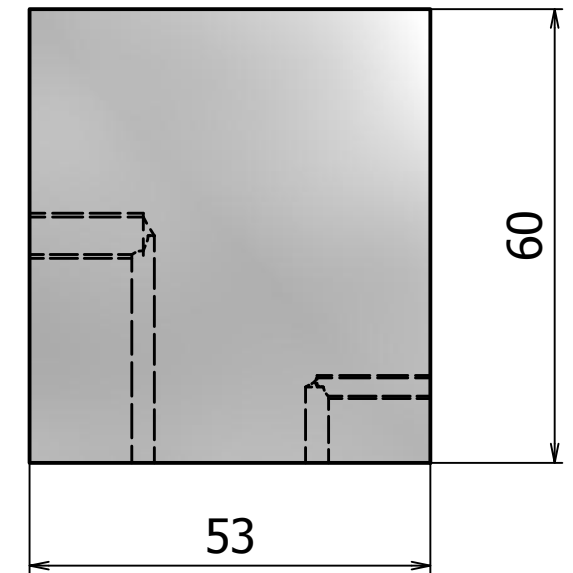


2 × M6x1 - 6H  $\nabla$  15

2 × Ø3 depth 30  
(vent holes)

2 × Ø3 depth 10  
(vent holes)

2 × M3x0.5 - 6H  $\nabla$  15  
In the actual piece the threaded part  
of the hole is shorter according to the  
length of the tap.



**Top cavity compensation mass**

Material: AISI 304

Tolerance: 0.1 mm

Number of pieces: 2

Author: Fabian Peña Arellano

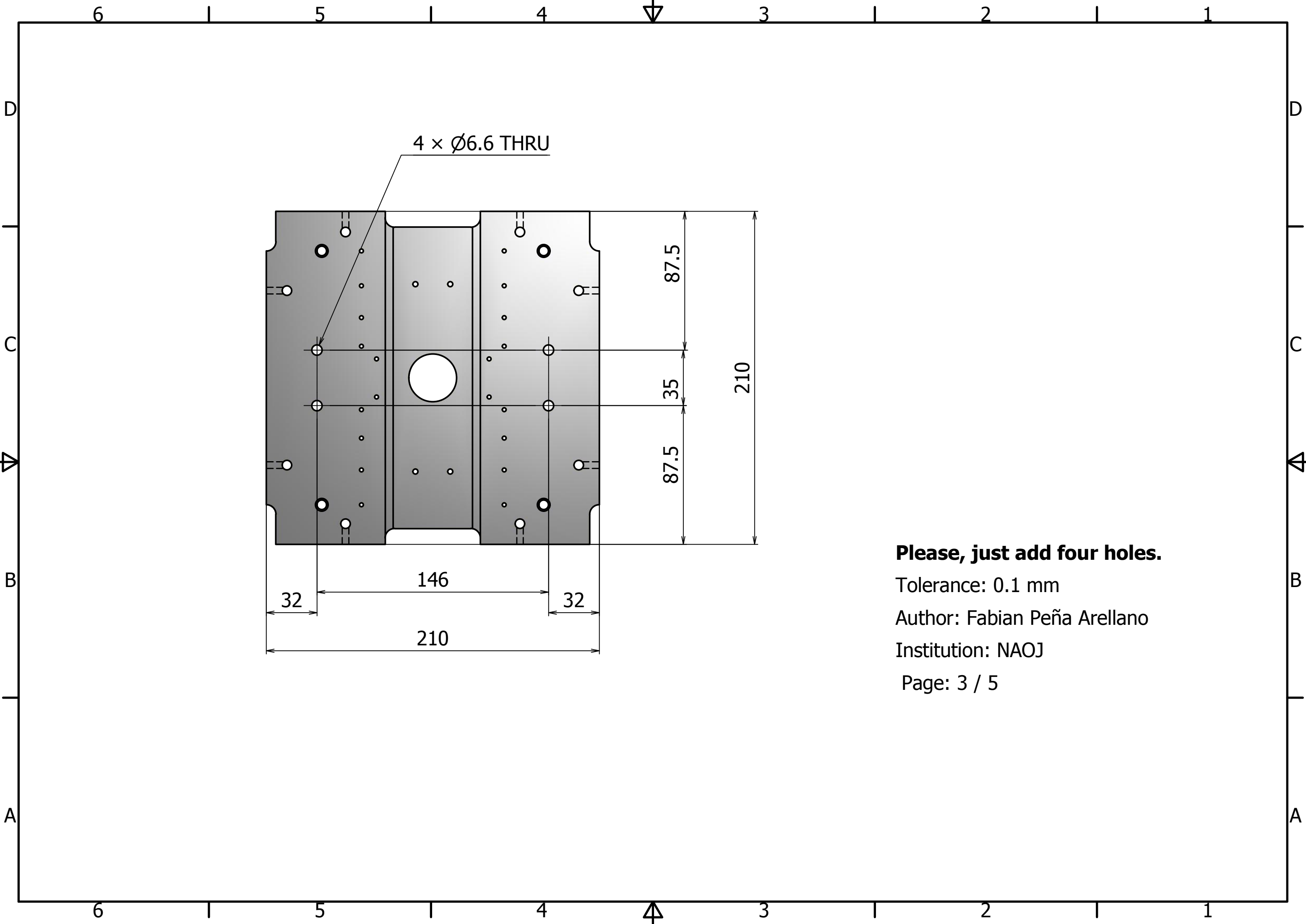
Institution: NAOJ

Density: 8.000 g/cm<sup>3</sup>

Mass: 1771 g

Volume: 221332 mm<sup>3</sup>





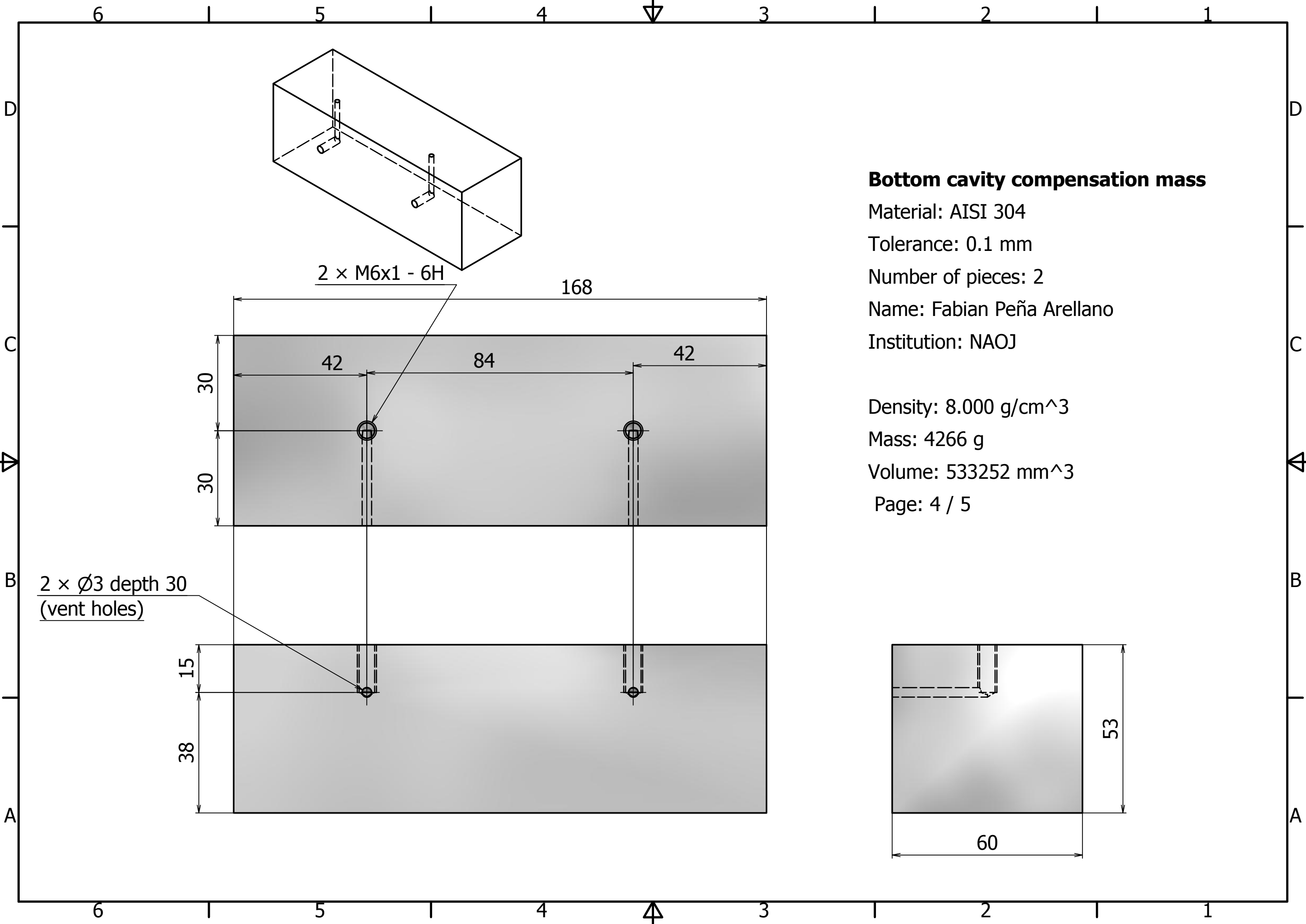
**Please, just add four holes.**

Tolerance: 0.1 mm

Author: Fabian Peña Arellano

Institution: NAOJ

Page: 3 / 5

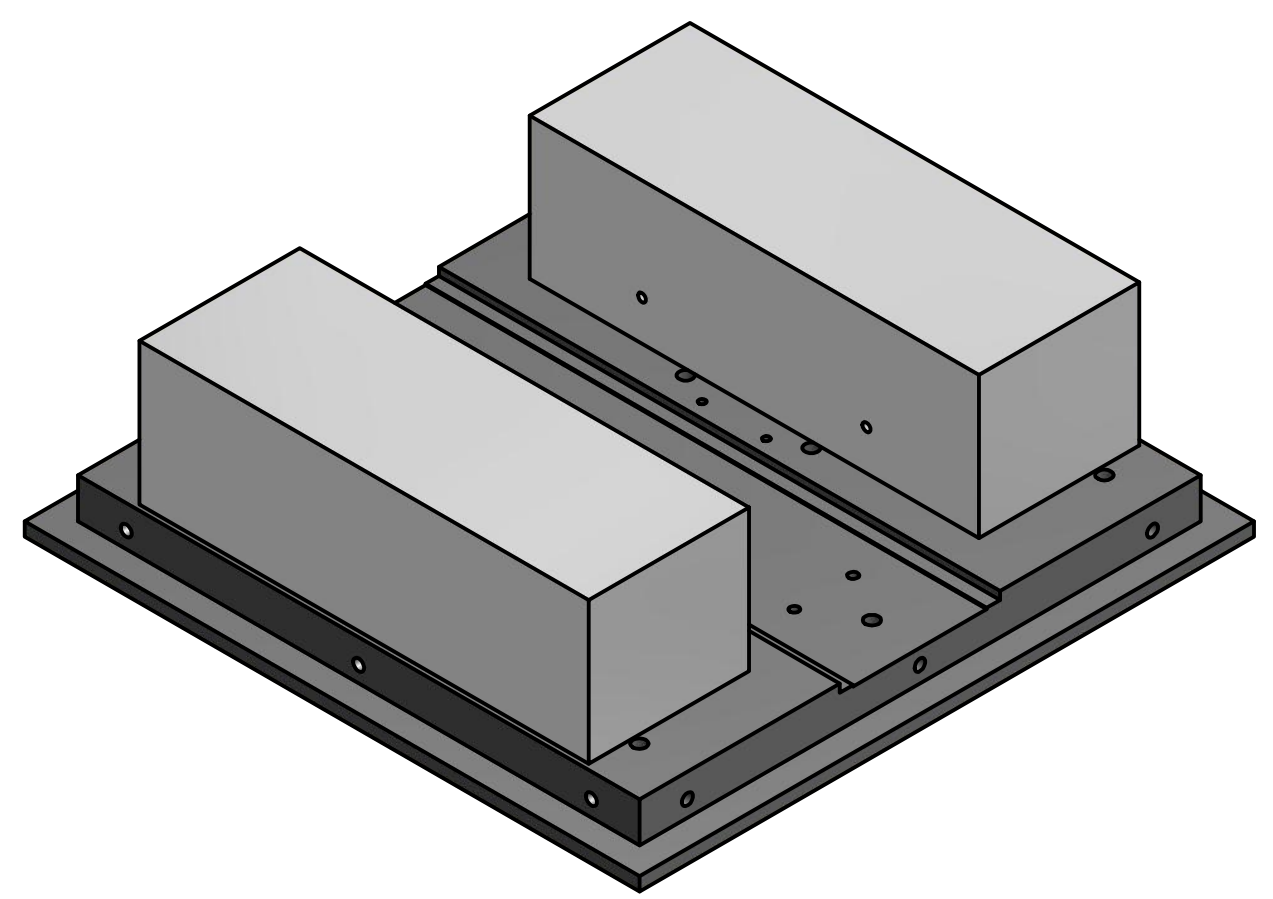
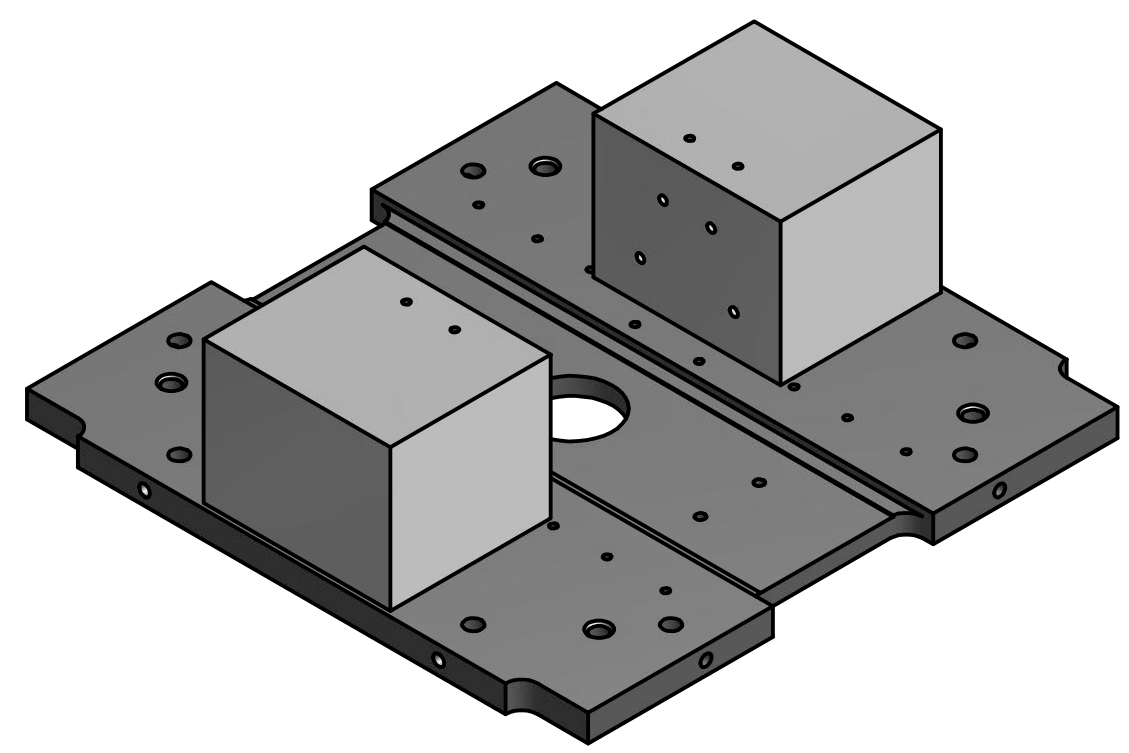


6 1 5 1 4 3 1 2 1 1



D

D



C

C



B

B

The compensation masses should be fixed to the plates using the requested holes using M6 screws.

Author: Fabian Peña Arellano

Institution: NAOJ

Page: 5 / 5

A

A

6 1 5 1 4 3 1 2 1 1

