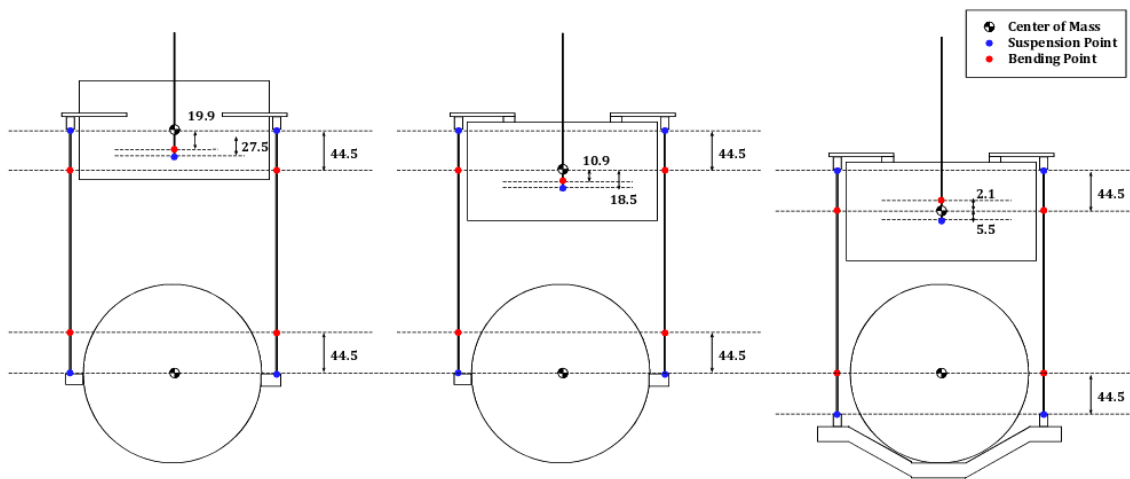


Actuator Response of Cryogenic Payload with Different Suspension Points of Sapphire Fibers

Takanori Sekiguchi

1. Model



Left: Suspension points are at CoM of IM and TM

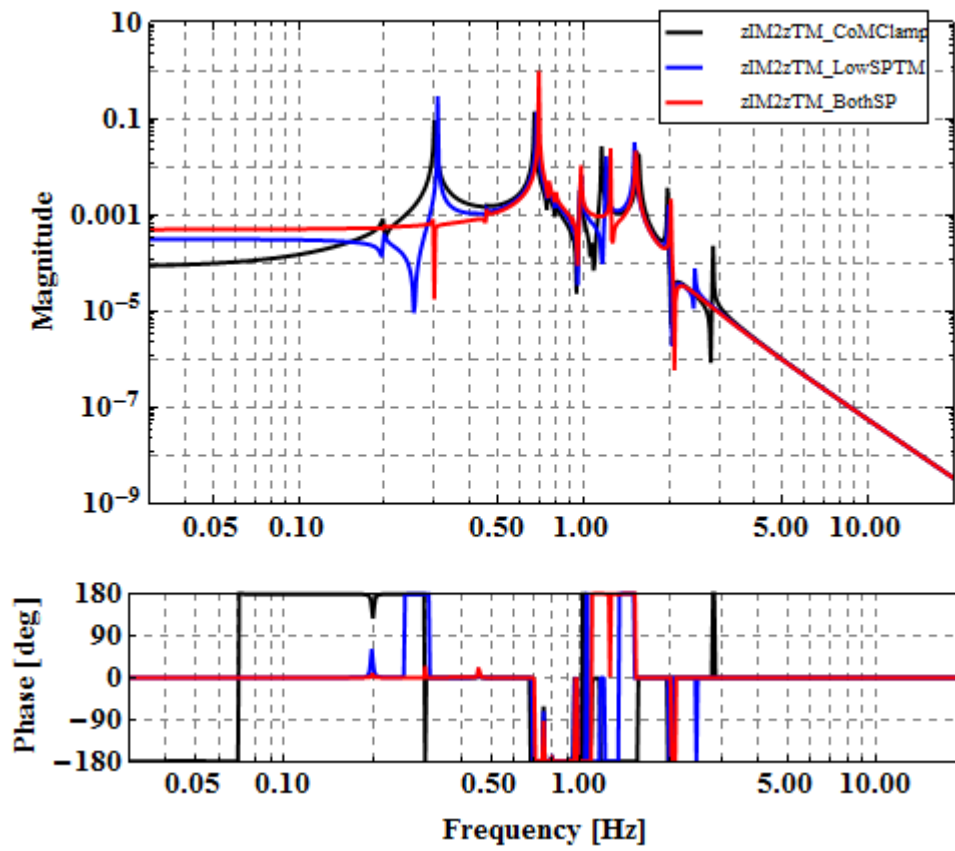
Middle: Upper bending points are at CoM of IM, lower suspension points are at CoM of TM

Right: Bending points are at CoM of IM and TM

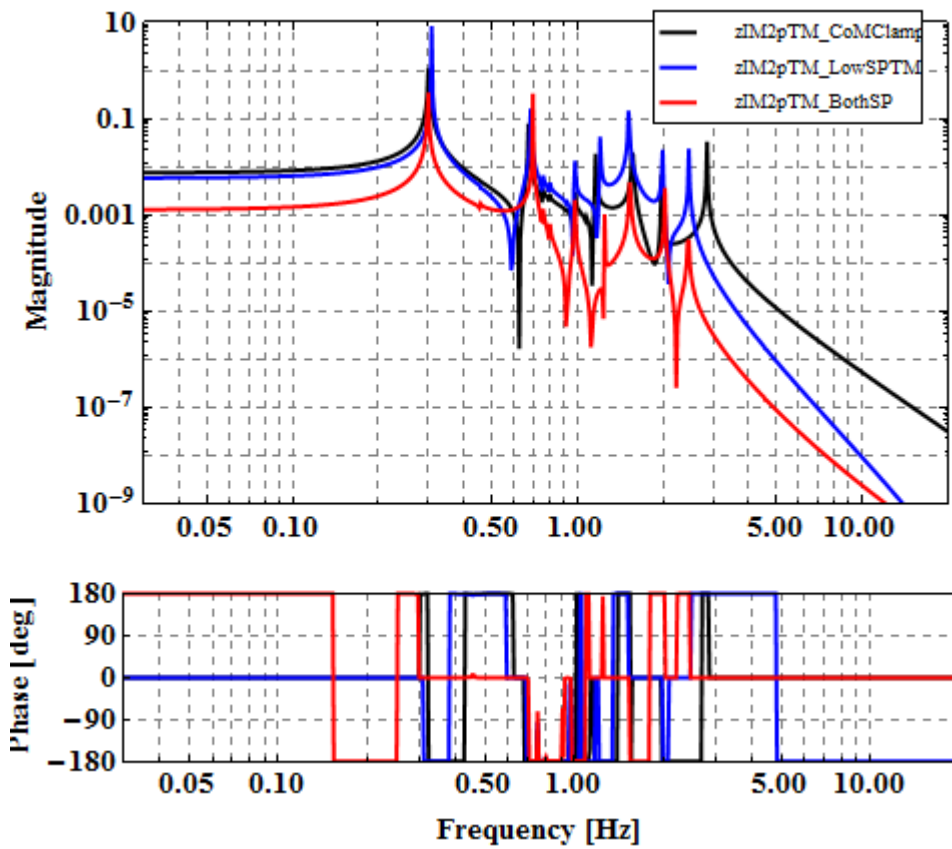
The pitch mode of IM is tuned at 0.3 Hz.

2. Calculated TFs

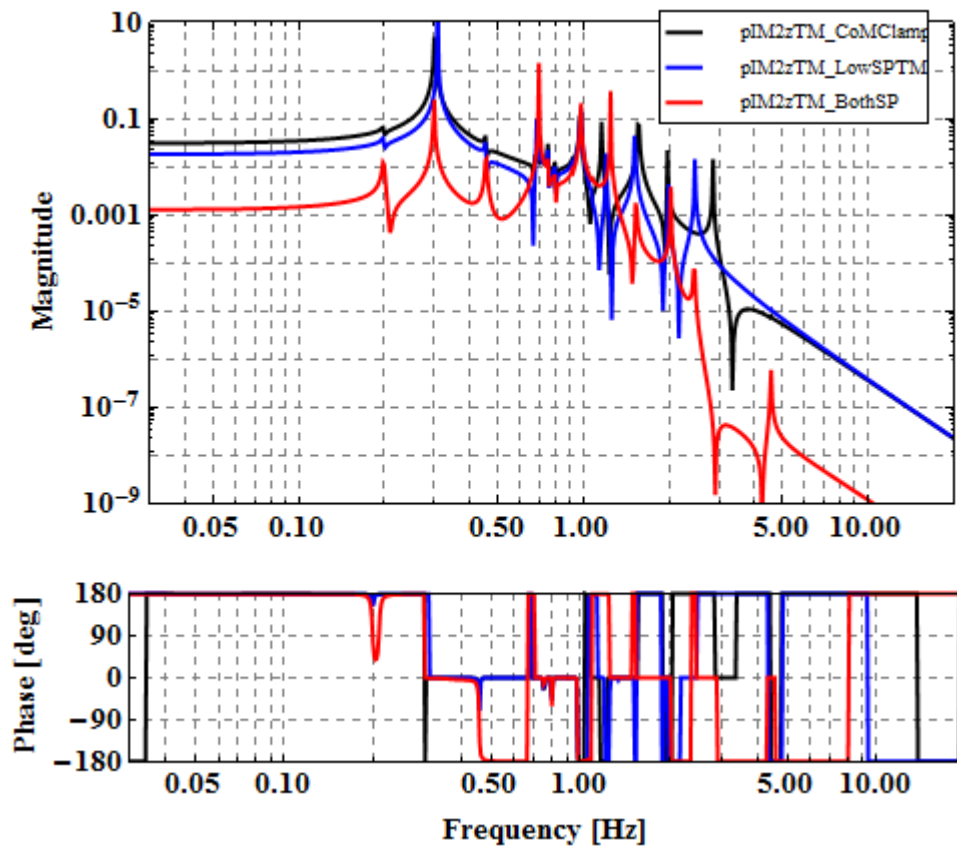
2.1. FzIM to zTM [m/N]



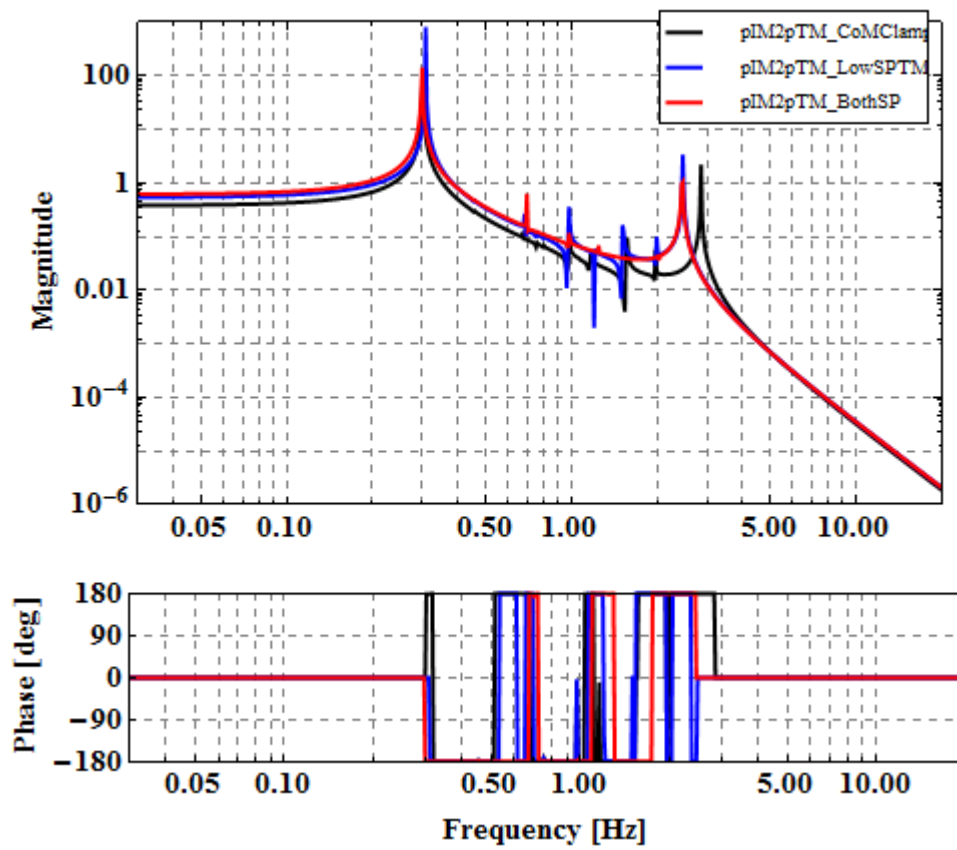
2.2. FzIM to pitchTM [rad/N]



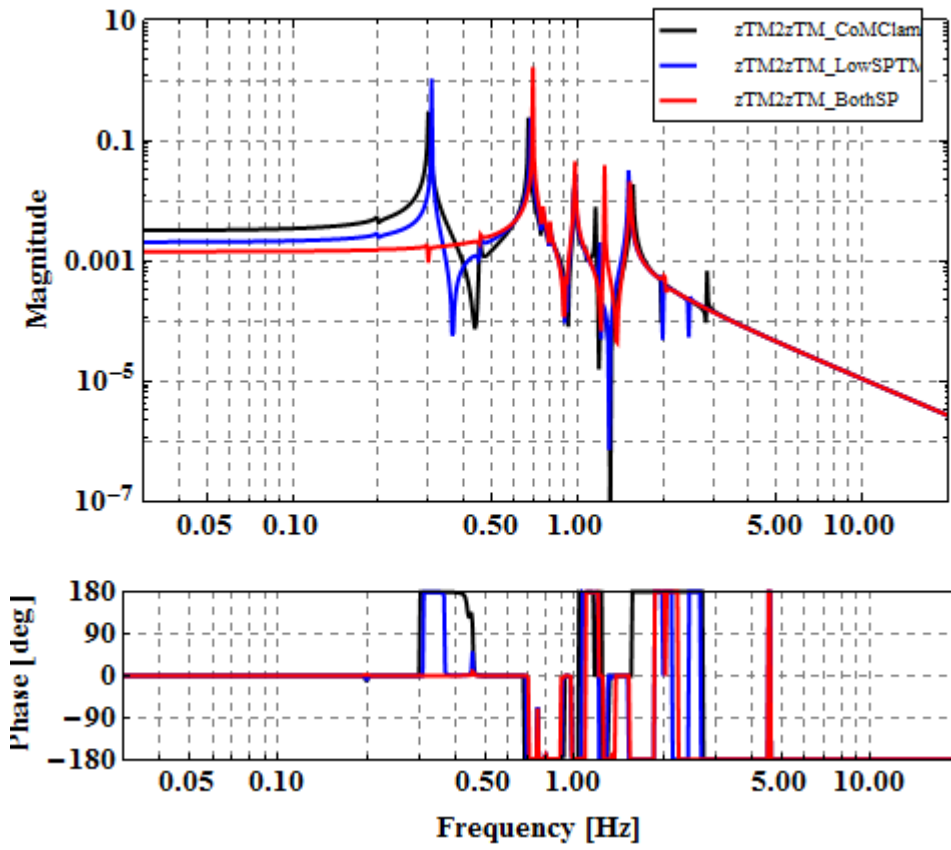
2.3. TxIM to zTM [m/Nm]



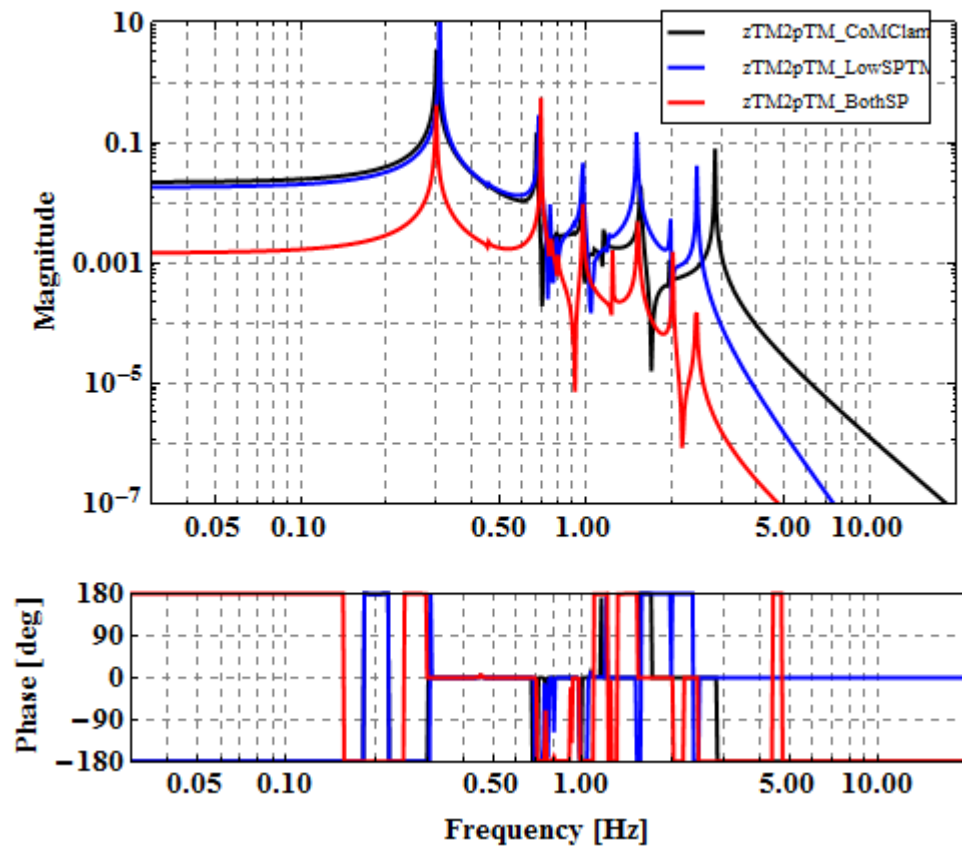
2.4. TxIM to pitchTM [rad/Nm]



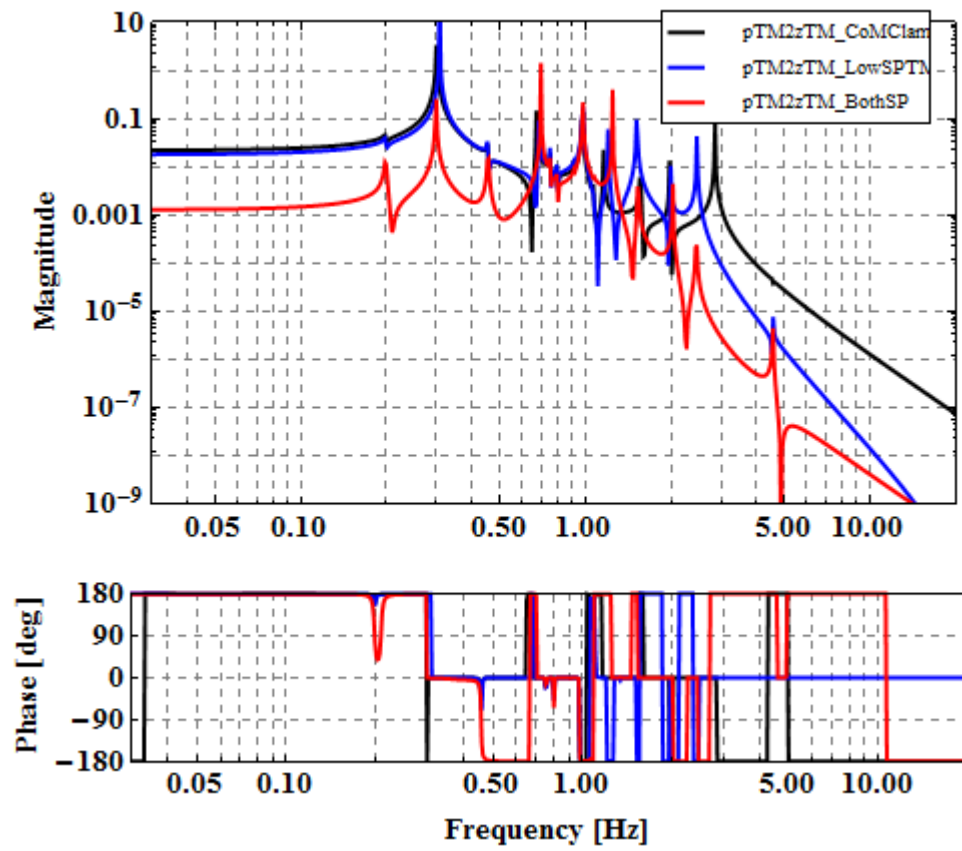
2.5. FzTM to zTM [m/N]



2.6. FzTM to pitchTM [rad/N]



2.7. TxTM to zTM [m/Nm]



2.8. TxTM to pitchTM [rad/Nm]

