



KAGRA Overview

Aug. 1, 2013

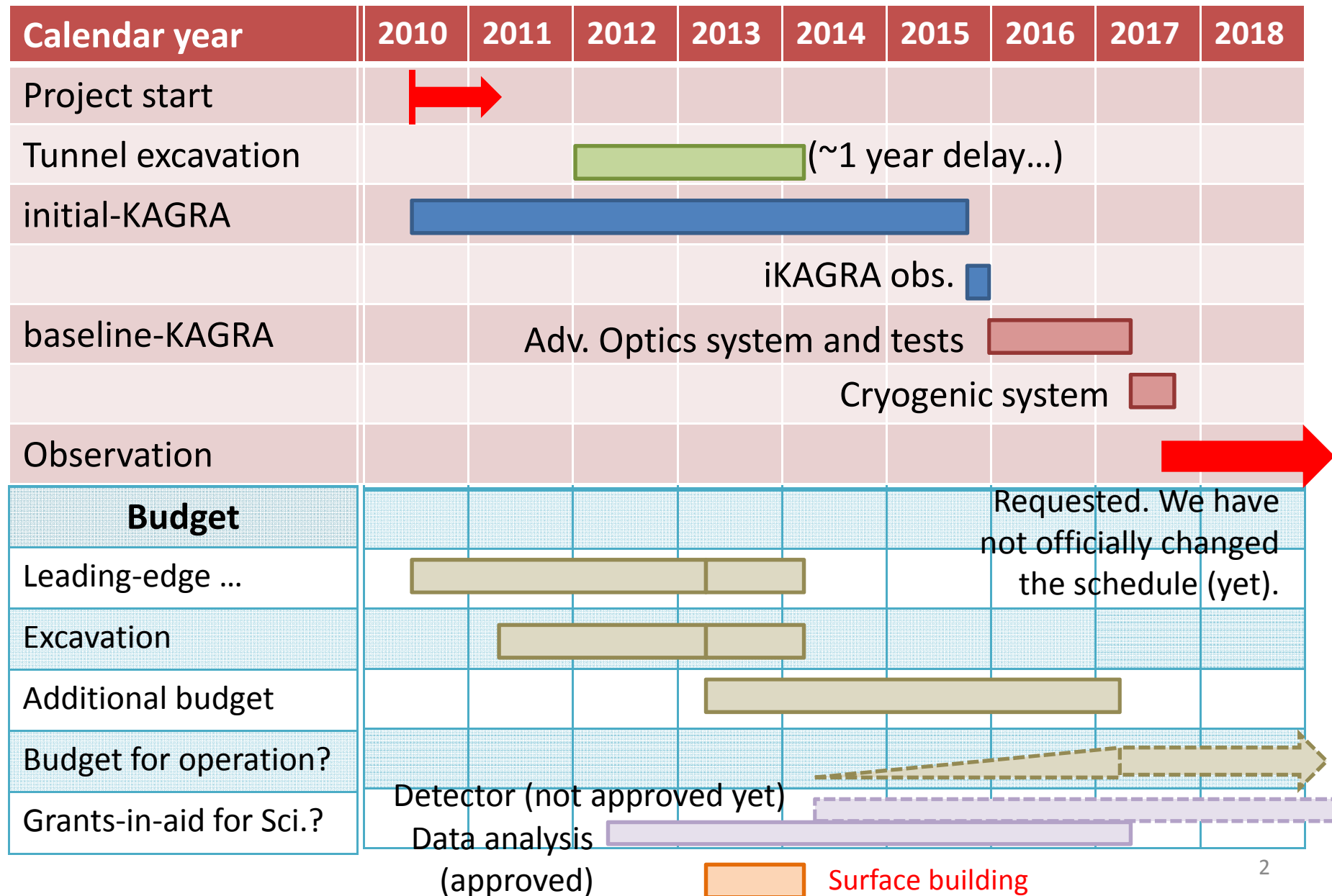
KAGRA International F2F meeting

Takaaki Kajita

(This presentation is quite similar to the one TK
presented at the June International video meeting)

Budget and revised schedule

June 2013



Budget related

- Leading-edge Research Infrastructure Program has been extended for one year (until the end of FY2013).
- We receive the stimulus budget for FY2012. This is for;
 - 1) extra budget for tunnel excavation,
 - 2) a part of the cryo-shield tube,
 - 3) a part of the recycling optical system, and
 - 4) surface building.

We only get them earlier than the original plan(except for tunnel excavation).

- The FY2013 budget from the government includes a part of;
 - 1) sapphire mirrors,
 - 2) the cryo-suspension system, and
 - 3) a part of the underground facilities.
- ✓ The equipments to be bought with the government's stimulus budget and regular budget are limited to the ones mentioned in the request. Please buy equipments that are not listed in the government budgets with the Leading-edge Research Infrastructure Program within this FY. (For details, contact M.Ohashi.)

Budget related (2)

- We are requesting the FY2014 construction budget, that includes;
 - 1) a part of sapphire mirrors,
 - 2) cryo-suspension system,
 - 3) cryo-shield tubes,
 - 4) recycling optics, and
 - 5) clean booth.
- We are requesting the operations budget starting in FY 2014.
- The budget deficit was about 1 B yen. SEO worked hard with the sub-group members to redefine the Day-1 bKAGRA. We are preparing Day-1 bKAGRA with the new plan.

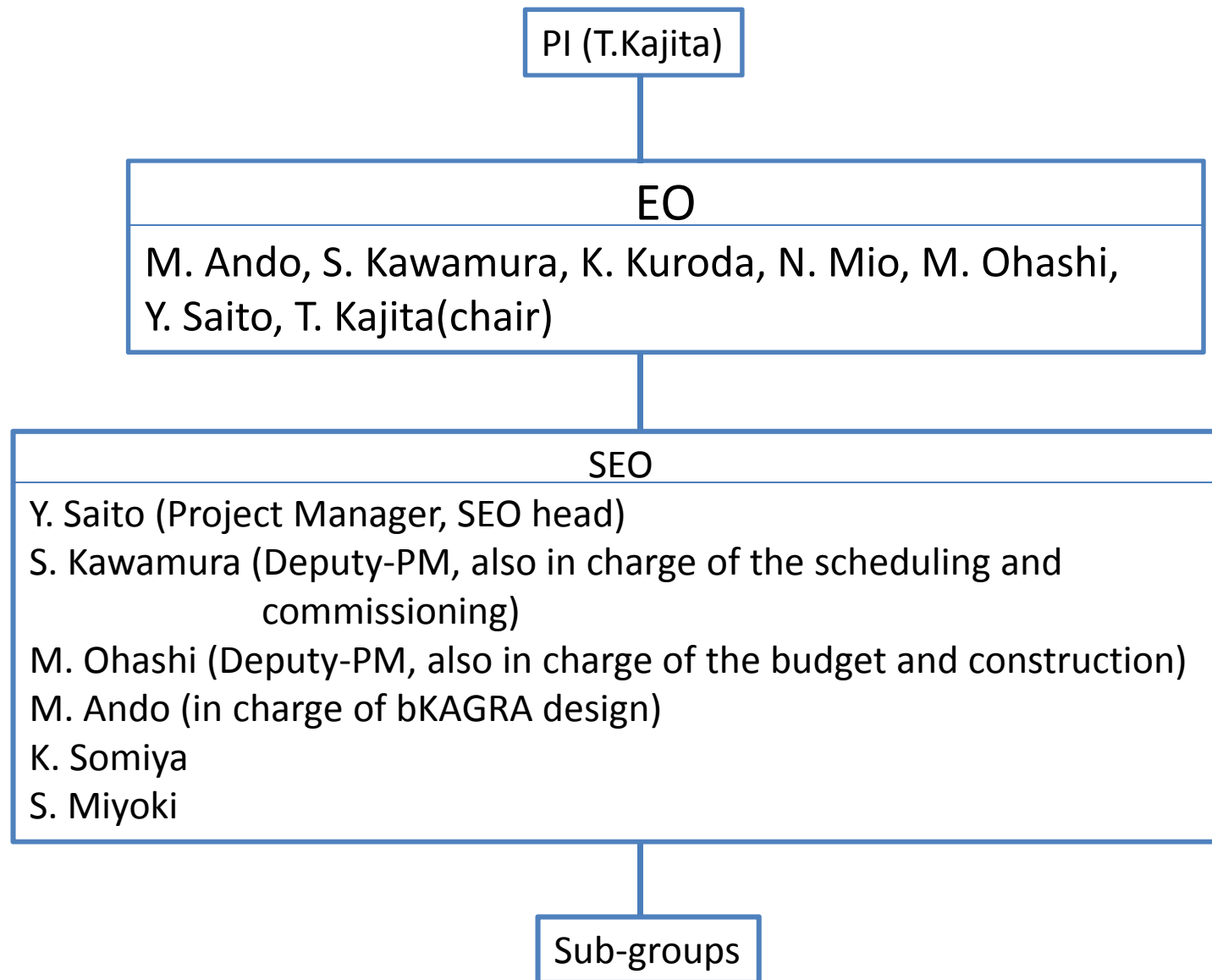
Budget related (3)

- Grant-in-aid for Scientific Research:
 - ✓ Already reported: JSPS Core-to-Core program (研究拠点形成事業, for researchers exchange, international travels) → Approved (Head = S. Kawamura, for 5 years, ~20Myen/year).
 - ✓ Specially Promoted Research (特別推進, for the detector R&D and commissioning). → Not approved this year (again). We will try again next year.

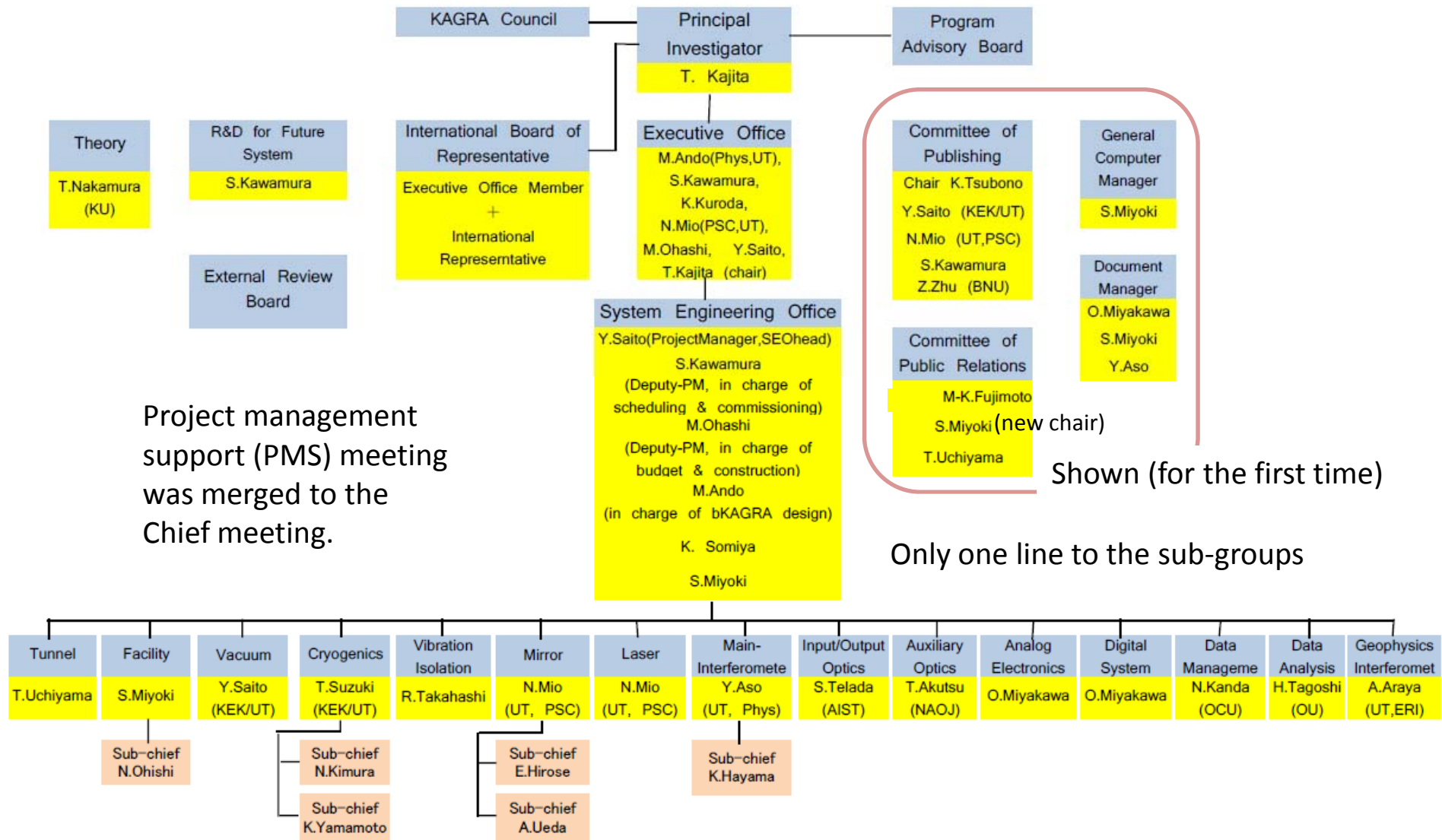
Project management and related

- Yoshio Saito has been appointed to the (full time) Project Manager as of April 1, taking over Ichiro Nakatani-san's job.
- Some changes in the management structure.
- The heads of the onsite construction and commissioning are;
 - M. Ohashi in charge of the construction
 - S. Kawamura in charge of the commissioning
 - Y. Saito oversees the whole activities
- For the management and overall structure, see the next pages.

New Project Chart (management part only)



New project chart



Collaboration with LIGO/LSC and Virgo (An update)

- In MOU/Attachment B “Agreement for data sharing and analysis during the KAGRA construction and commissioning period”, there is a sentence; *“The KAGRA spokesperson will appoint a liaison person to coordinate data analysis activities with the LSC and VIRGO data analysis coordinators, who may attend meetings of the LSC-Virgo Data Analysis Council.”*
- ➔ KAGRA EO appointed Nobuyuki Kanda and Hideyuki Tagoshi to the liaison person(s).
- KAGRA will really start collaborative data analysis activities with LIGO/LSC and Virgo.

Remote participation (SeeVogh)

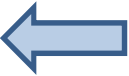
- “Cooperative Agreement between LIGO Research Partners and Evogh, Inc. to provide remote participation services on the SeeVogh Research Network” was signed (among LIGO lab, EGO, KAGRA and Evogh) on April 3, 2013.
- Under this agreement, LIGO/LSC, EGO/Virgo, KAGRA will be granted use of the SeeVogh RN for all of its members to facilitate GWRC research both among the collaboration and as necessary with researchers and scientists from outside the collaborations as guest participants.
- Shinji Miyoki installed a SeeVogh server in ICRR.

Others

- Next KAGRA Council meeting (between ICRR, KEK and NAOJ, with some more members); Sep. 17 @ICRR.
- Next Program Advisory Board meeting; Nov. 2 and 3 @ICRR.

At the end of the previous F2F meeting...

Next F2F meeting

- Dates: Aug.1(Thu)-3(Sat)
- Venue: Toyama University (Matsushima-san and the Toyama group, agreed to host)
- Agenda to be included (in addition to the usual ones):
 - Updated KAGRA design with the constraint of available budget
 - Site visit (KAGRA, probably either on July 31 or Aug 4?)
 - Construction plan 
 - Data taking shifts
- Special remark: Some fraction of the travel expenses can be covered by the JSPS Core-to-Core program