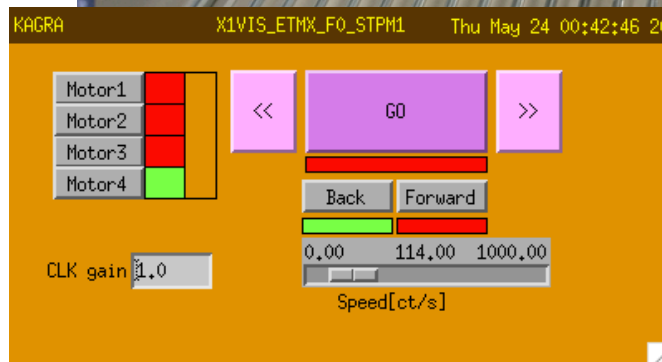
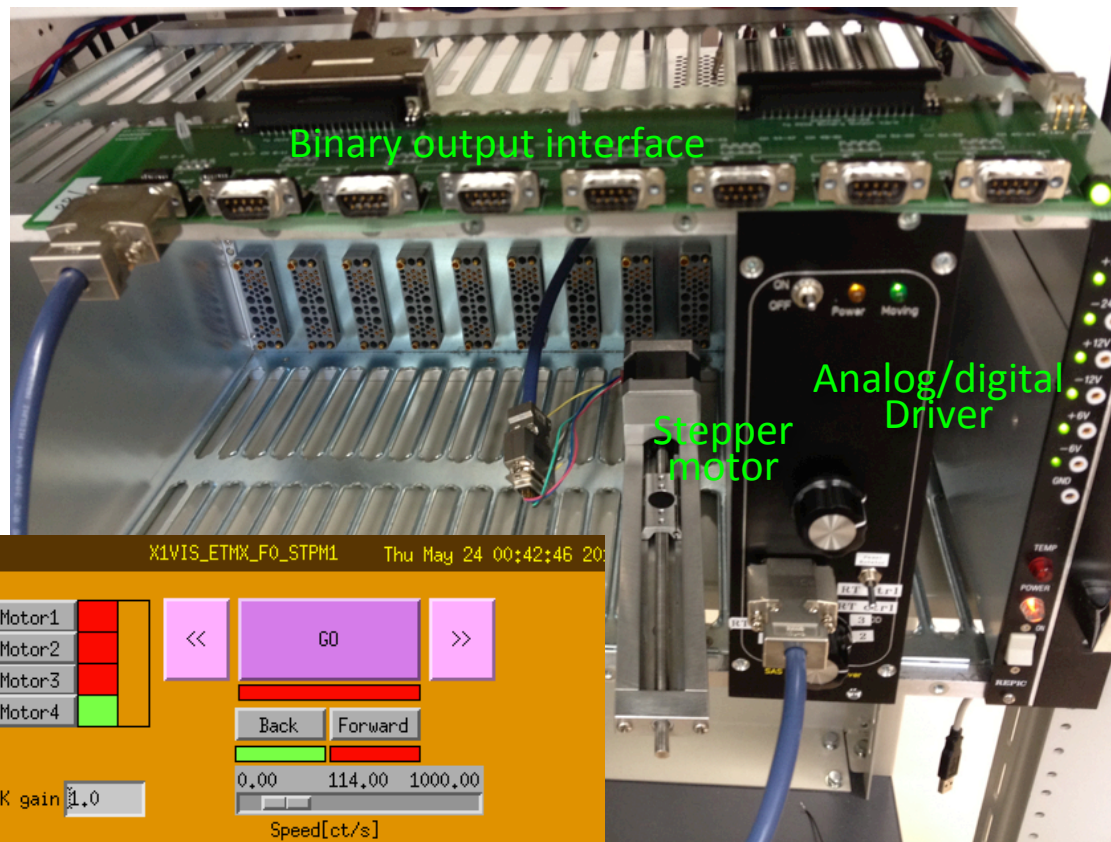
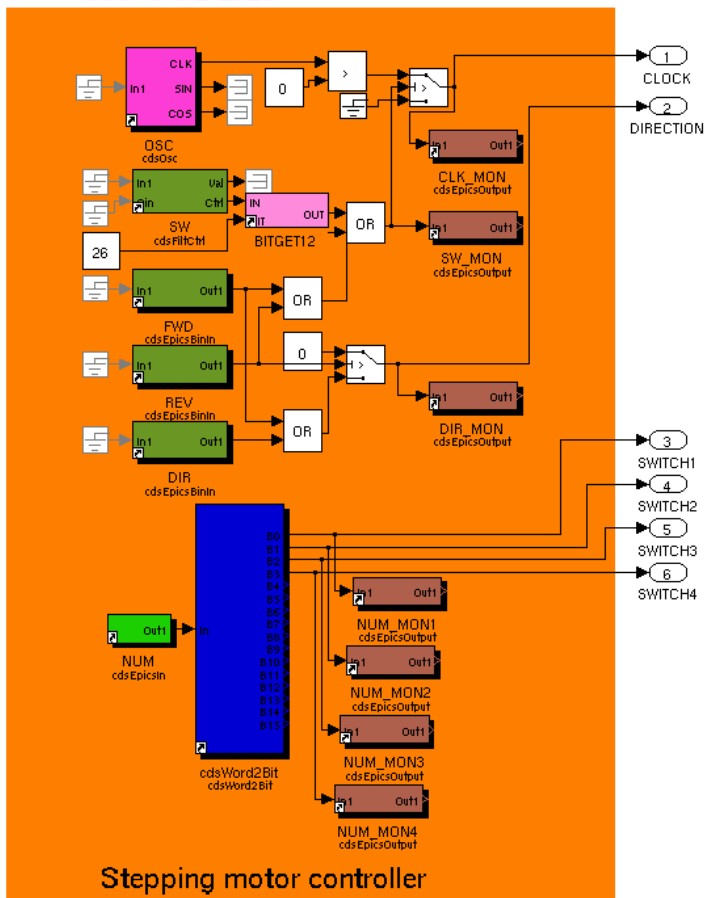


RT model



MEDM

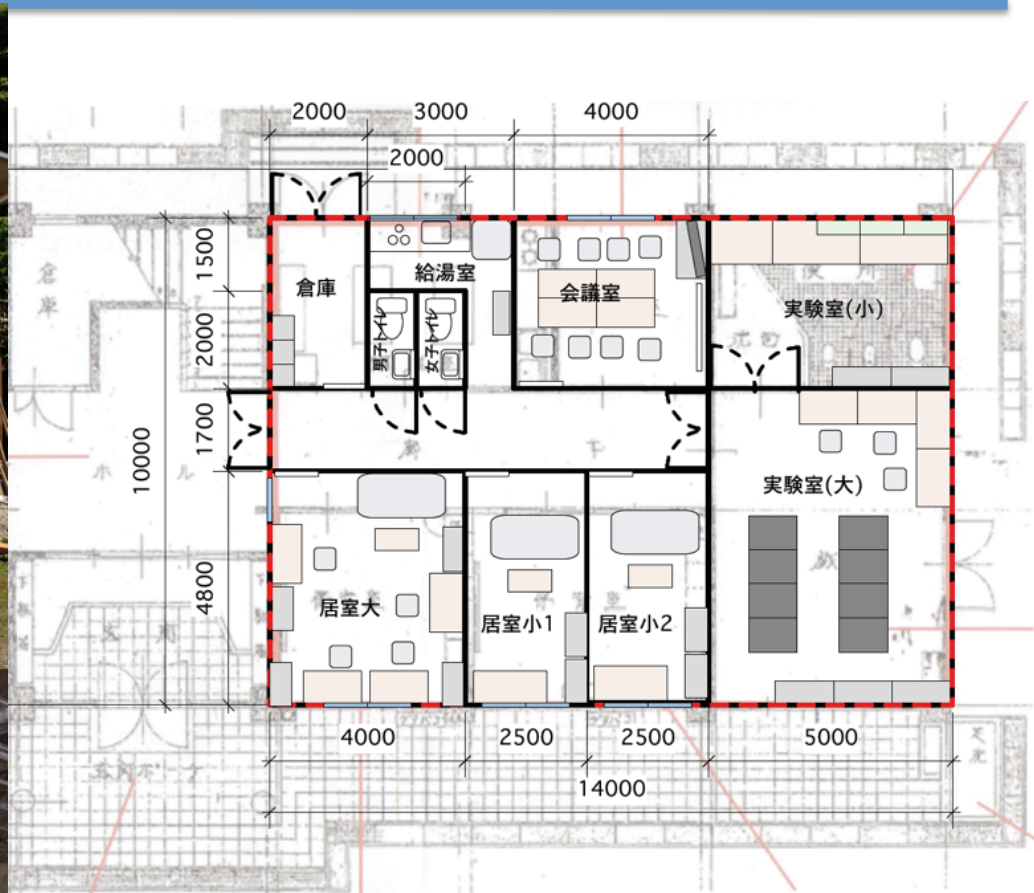
- Controlling up to 4 stepper motors
- 2bits for clock and direction
- 4 bits for switching 4 motors exclusively
- Servo script written in python

will be installed into Pre-isolator soon.

- Making a signal list at ADC and DAC
 - To estimate more accurate No. of ADC, DAC, IO chassis and RT-PC
- ~half of VIS and IFO transmitted ports are done
 - Listed ~900ch/3200ch
 - Current channel list: **JGW-T1201105-v3**
 - Next target: MIF and CRY
- Making a location list for ADC, DAC, IO chassis and RT-PC on 19 inch racks
- Lack of PCIe slots due to too many whitening switch
 - Slow BO?
- **Please upload your detail information on JGWDoc.**

- Asking several companies for mass production of electronics
 1. Design boards -> each subsystem
 2. Making boards, soldering electronic parts
 3. Making chassis
 4. Putting them into chassis
 5. Inspection -> limited test due to technological difficulty, limited budget
- Making an electronics list with existing diagram (ex. LIGO DCC)
- Lecture soon!
 - How to order analog electronics to AEL subgroup





- Construction to be completed by end of July
- Full Network test
 - Redundancy, cyber security