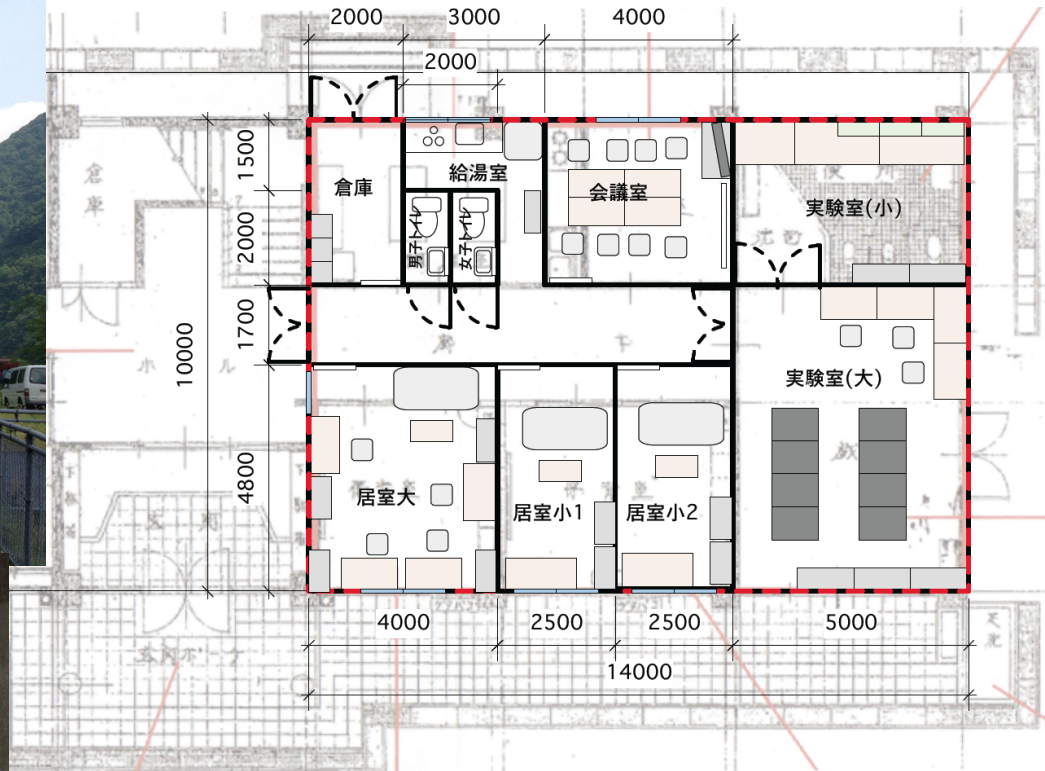


FY		2010				2011				2012				2013				2014				2015				2016							
Quarter		1Q	2Q	3Q	4Q	1Q	2Q	3Q	4Q	1Q	2Q	3Q	4Q	1Q	2Q	3Q	4Q	1Q	2Q	3Q	4Q	1Q	2Q	3Q	4Q	1Q	2Q	3Q	4Q				
Main Phase		Design								Tunnel								Vacuum				FPMI				RSE							
Prototype test	CLIO operation	█	█	█	█																												
	Data analysis test									█	█	█	█																				
Standalone system for subsystems	Hard/software setup					█	█	█	█																								
	Circuit									█	█	█	█																				
	Delivery									█	█	█	█																				
Article test	Small network					█	█	█	█																								
	Large network system									█	█	█	█	█	█	█	█																
	Circuit									█	█	█	█																				
	Inspection													█	█	█	█																
Full system	Installation																	█	█	█	█	█	█	█	█								
	Tuning																									█	█	█	█				
Upgrade	RSE																													█	█	█	█
	Cryo																													█	█	█	█

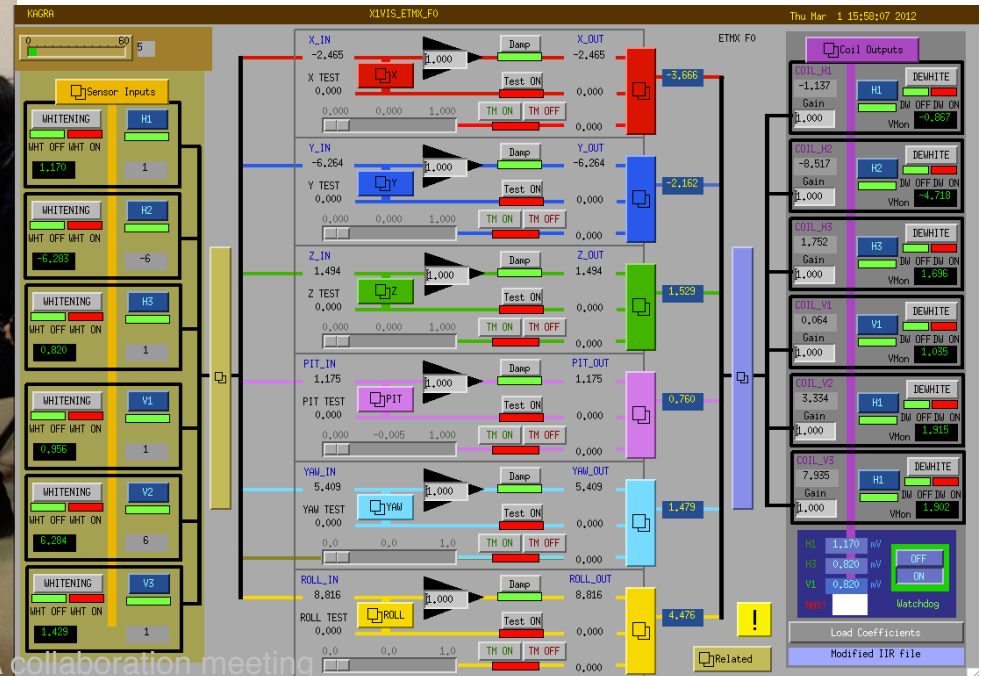
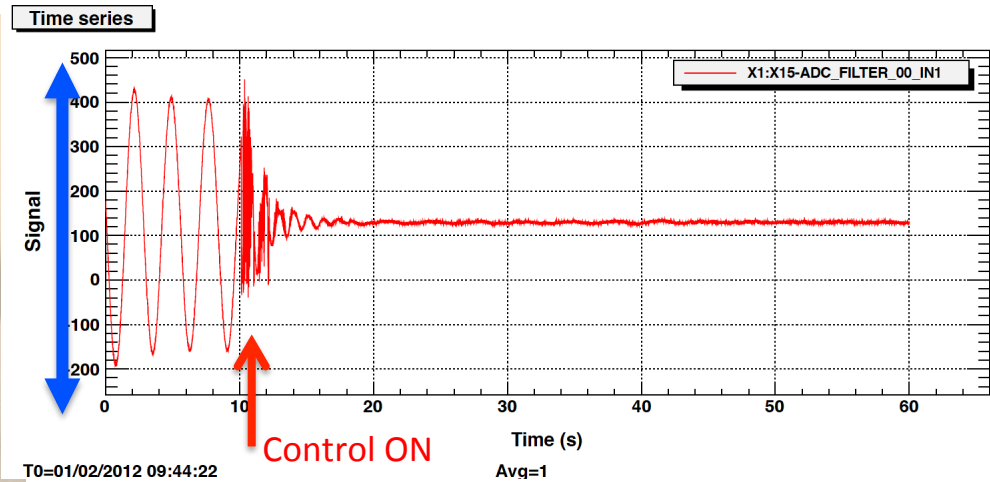
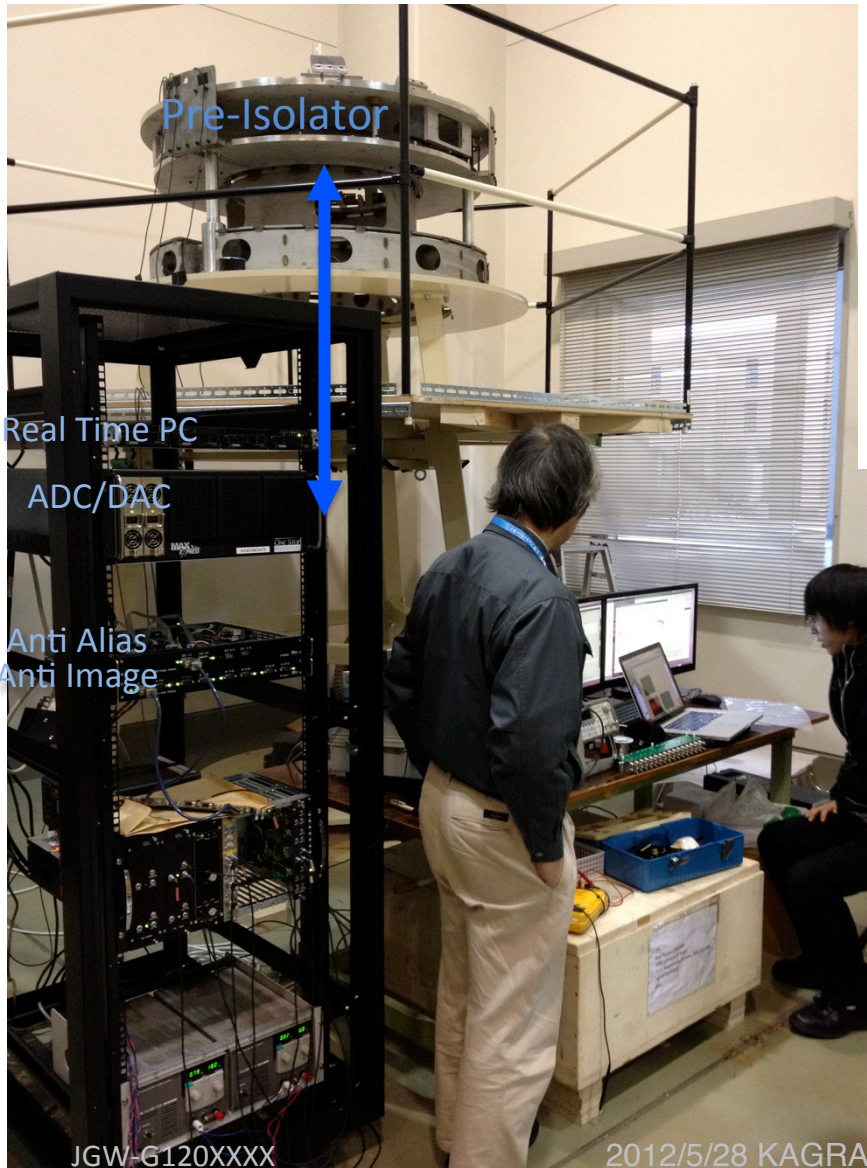
- A. 2009-2010 prototype test @ CLIO (done)
 - Basic IFO operation and noise performance
- B. 2011~ standalone system for subsystem (system: done, 2/5 delivered)
 - Data analysis, VIS, (IOO, CRY...)
- C. 2011 Small network test with 1 master and 2 RT PCs (done)
 - GE RFM, Dolphin RFM, DAQ, timing network
- D. 2012-2013 Full test@ Kamioka new building
 - Constructing many RT rack modules



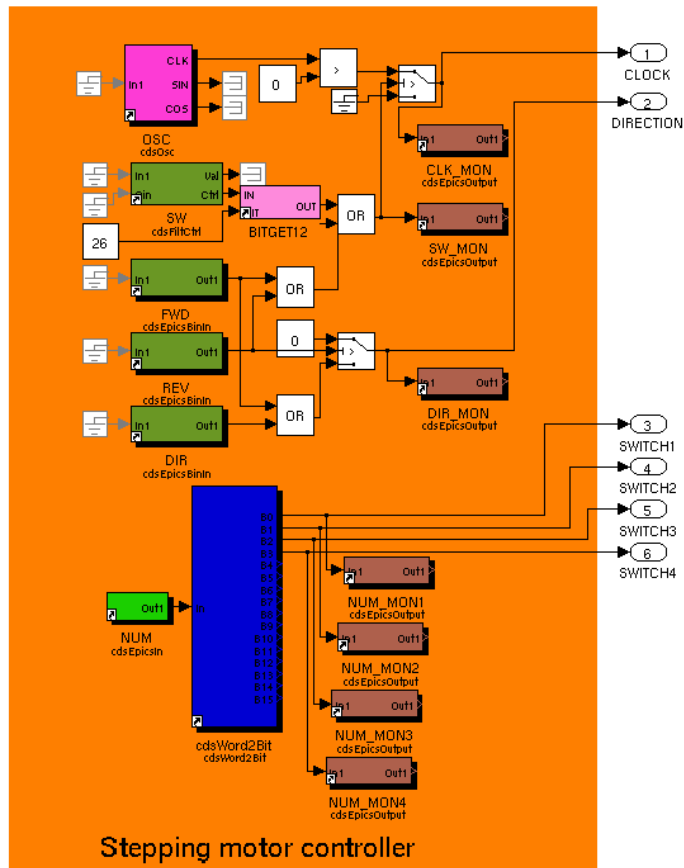
Installation into KAGRA mine



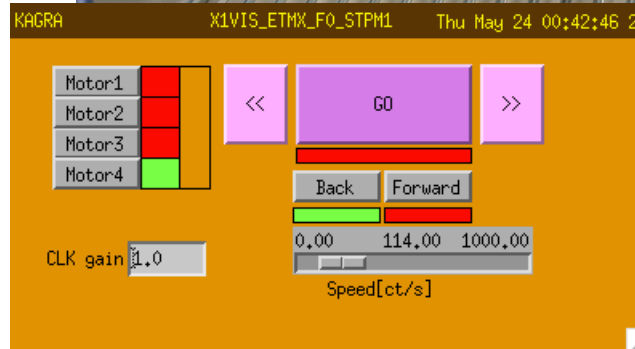
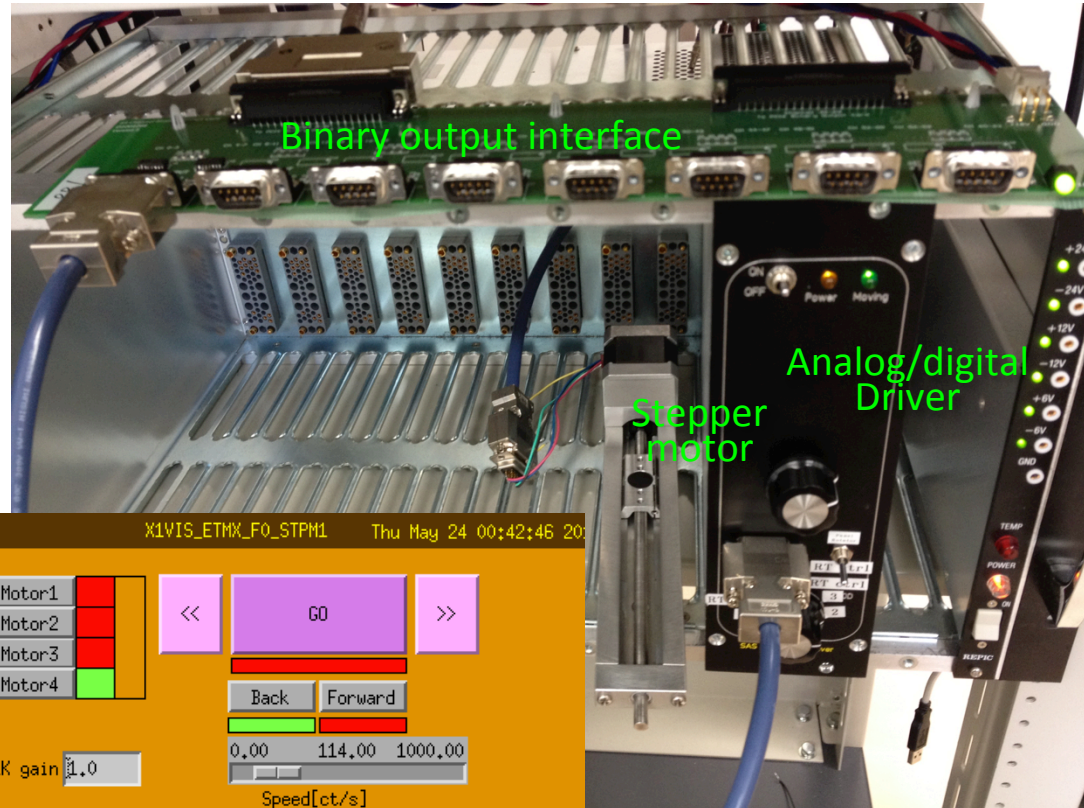
- 8 racks
- Full Network test
 - Redundancy, cyber security
- Multiple RT racks



RT model



Stepping motor controller



MEDM

- Controlling up to 4 stepper motors
- 2bits for clock and direction
- 4 bits for switching 4 motors exclusively
- Servo script written in python

will be installed into
Pre-isolator soon.

