

**F2F Mtg.
Feb. 2, 2012**

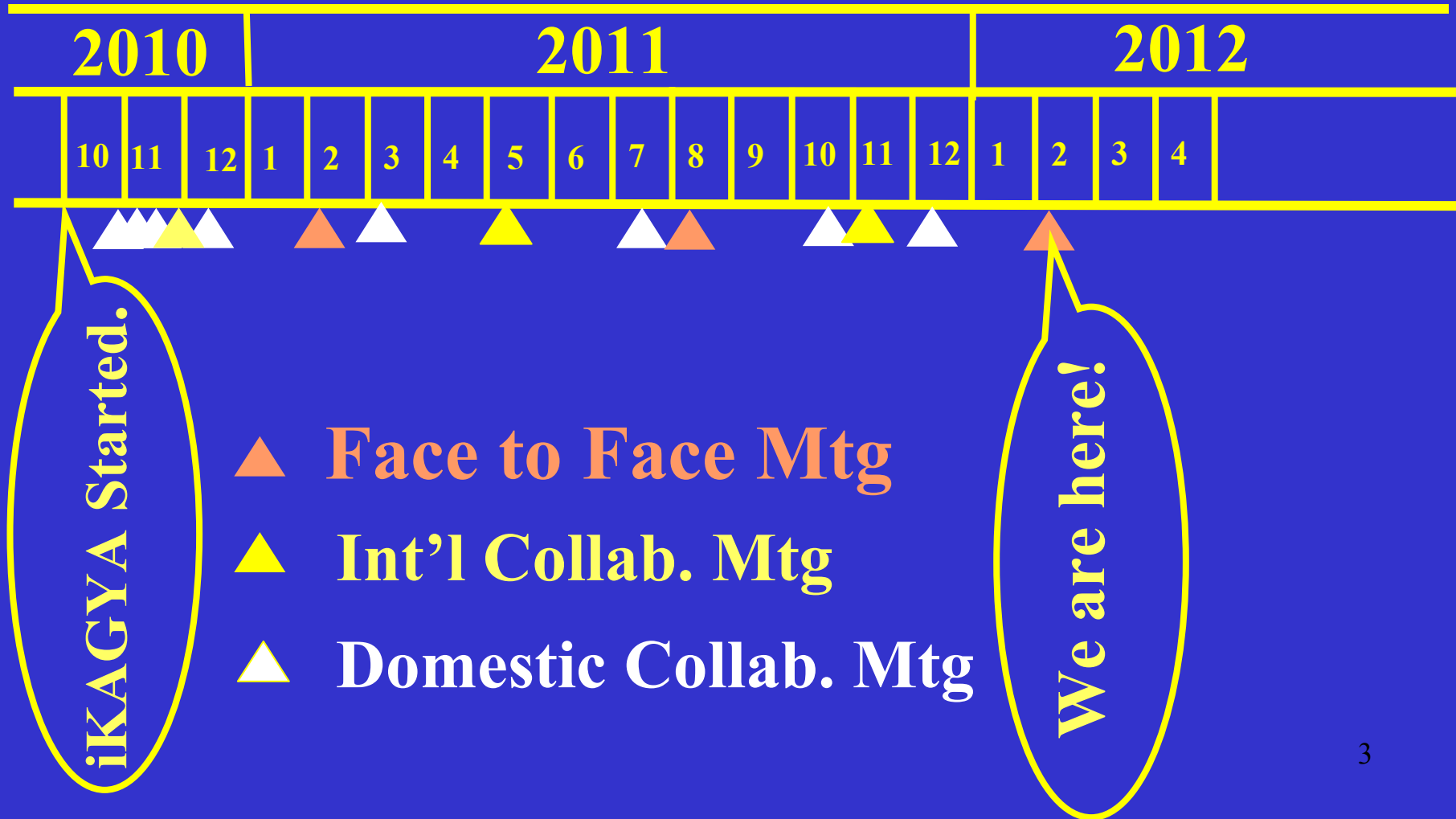
Overview of Project Status

I.Nakatani

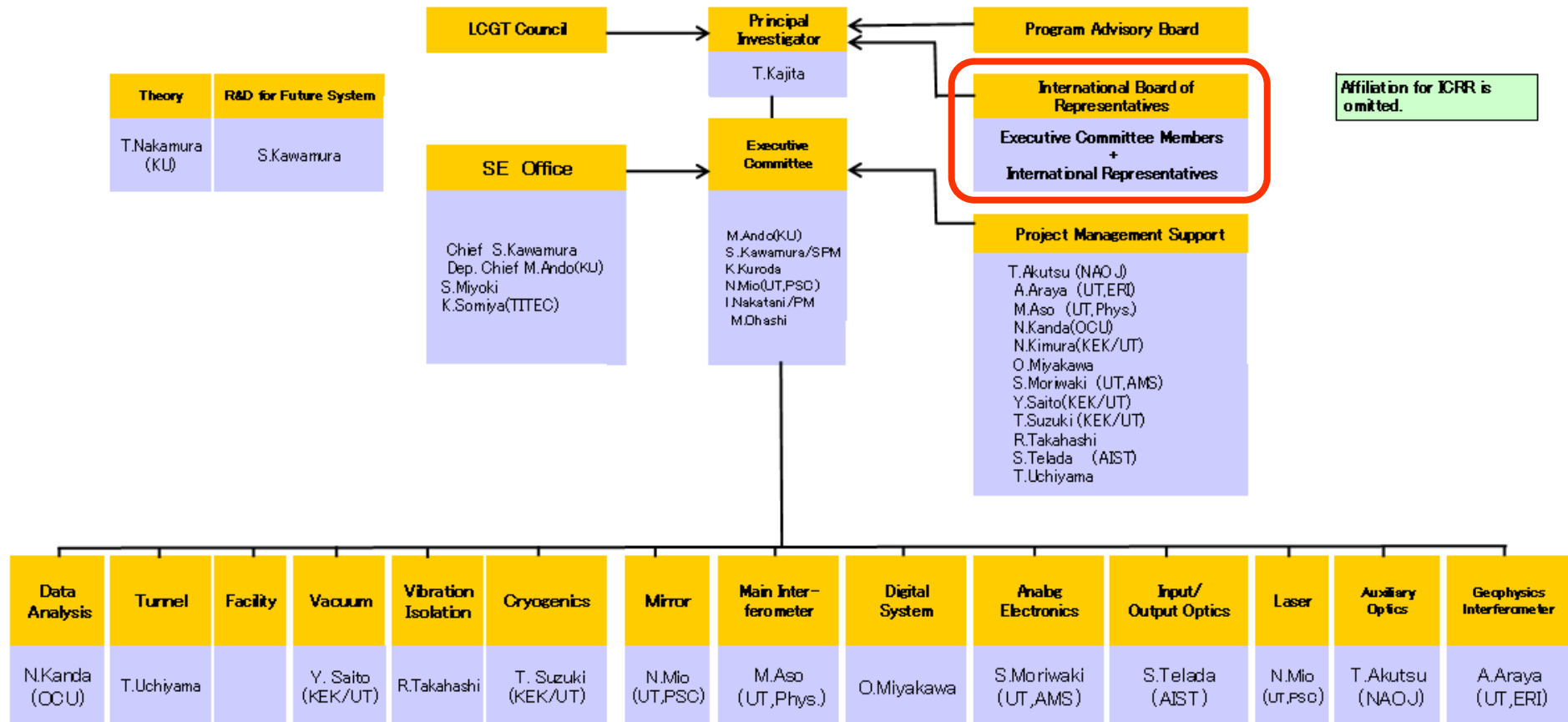
SESSION STRUCTURE

15:10-17:25	Project Management (chair: I.Nakatani)	
	Overview	I.Nakatani [10min]
	Budget Status	M.Ohashi [10min]
	Layout	S.Miyoki [20min]
Coffee Break [15min]		
	Roadmap of KAGRA	M.Ando [30min]
	Internal/External Reviews	S.Kawamura [15min]
	Interface Control Document (ICD)	K.Somiya [20min]
	Author List for Publications	K.Kuroda[15min]

COLLABORATION MEETINGGS



ORGANIZATION



**International Board of
Representatives**

Executive Committee Members
+
International Representatives

International representatives: Principal Investigators representing each country or region to request budget in his/her own region.

International Board of Representatives (cont'd)

Scope:

- Discuss a long term KAGRA vision**
- Coordinate the scope of the activities of the international partners and the meeting schedule**

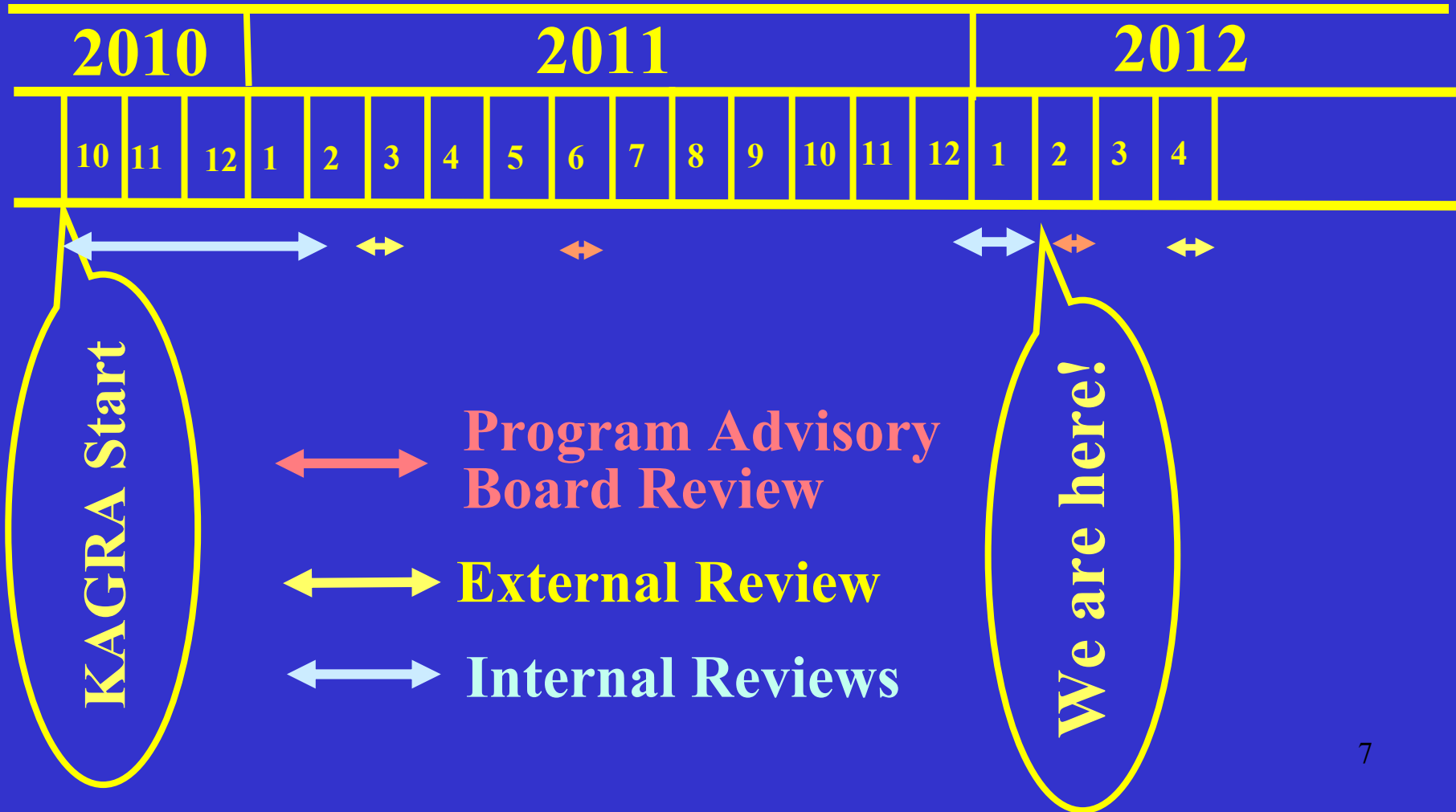
Members:

- KAGRA Executive Committee members and the Principal Investigators from abroad representing each country or region to be responsible for the request of the budget in his/her own region**

Board meetings:

- To be held twice a year or more – typically at the Face-to-Face Meetings**

REVIEWS



PROJECT MILESTONES

- **Suspended portion of the 2011 budget has been released:**
 - + **Tunnel excavation to start in coming April with one year delay**
 - + **Open bidding procedure for the tunnel completed**
 - + **Ceremony held with a new nickname given as Kagura**
- **International Collaborations Pursued**
 - + **Establishment of International Board of Representatives**
 - + **Agreement concluded with Shanghai Normal University, Tsinghua University and Shanghai Institute of Ceramics.**
 - + **Bilateral collaboration has started with Korea.**
- **Reviews**
 - + **Internal Reviews (Dec. 2011 – Jan. 2012)**
 - + **Program Advisory Board Review (Feb. 23, 2012)**
 - + **External Review (Apr.17 – 20)**

PROJECT MILESTONES (cont'd)

- Taskforces:

- + Roadmap (M. Ando)
- + Interface Control Document (K. Somiya)
- + Layout (S. Miyoki)

- Study group:

- + Detector Characterization (Hayama)
- + Facility Control and Interlock (M.Aso)
- + System for Book-keeping of purchased items (S. Miyoki)



CHALLENGES

Serious shortage of human resources

- † Almost all of the 14 subsystems are suffering from lack of human resources.
- † We are exploring all avenues trying to get funds, to expand collaborations and to devise an efficient way.
- † We put too much emphasis on recruiting highly experienced researchers who immediately fit in everyday development activities.
- † We should be patient enough to start with on-the-job-training of young guys brilliant but with little or no experience.

Extremely tight schedule

- † Our discussions on the Roadmap have been prone to idealism.
- † The risk management has sometimes been misplaced in our discussions.

end