



Digital system status report

- Step by step development: mostly on time
 1. Prototype test on CLIO
 2. Standalone system for subsystems
 3. Small network test with 2 or 3 PCs
 4. Large network test with ~20 PCs
 5. Installation

FY		2010				2011				2012				2013				2014				2015				2016							
Quarter		1Q	2Q	3Q	4Q	1Q	2Q	3Q	4Q	1Q	2Q	3Q	4Q	1Q	2Q	3Q	4Q	1Q	2Q	3Q	4Q	1Q	2Q	3Q	4Q	1Q	2Q	3Q	4Q				
Main Phase		Design				Tunnel								Vacuum				FPMI				RSE				Cryo							
Prototype test	CLIO operation	█	█	█	█																												
	Data analysys test							█	█	█	█																						
Standalone system for subsystems	Hard/software setup					█																											
	Circuit					█	█																										
	Delivery								█																								
Article test	Small network test							█	█																								
	Large network test									█	█	█																					
Full system installarion	TOS->full system													█	█																		
	Software setup													█	█																		
	Cuircuts													█	█	█																	
	Newtork													█	█	█																	
Upgrage	RSE																																
	Cryo																													█	█		



Recent work and future plan for Digital system

Standalone

- PC: ready
- Circuits: being prepared
- will be delivered in December to SAS group

Small network test: almost done using 3 PCs for GE RFM, Dolphin RFM, DAQ, timing

- To change open-mx to myrinet for DAQ receiver
- To replace 1PPS sync to IRIG-B sync

Step to large scale: in FY2012

- many real-time PCs and server PCs
- redundancy for NDS, DAQ
- 3km test
- Security

Installation

- calm environment
- independent room
- fiber connected IO chassis
- regulation for cable
- maintenance for replacing PCs



Circuits for DGS

Circuits

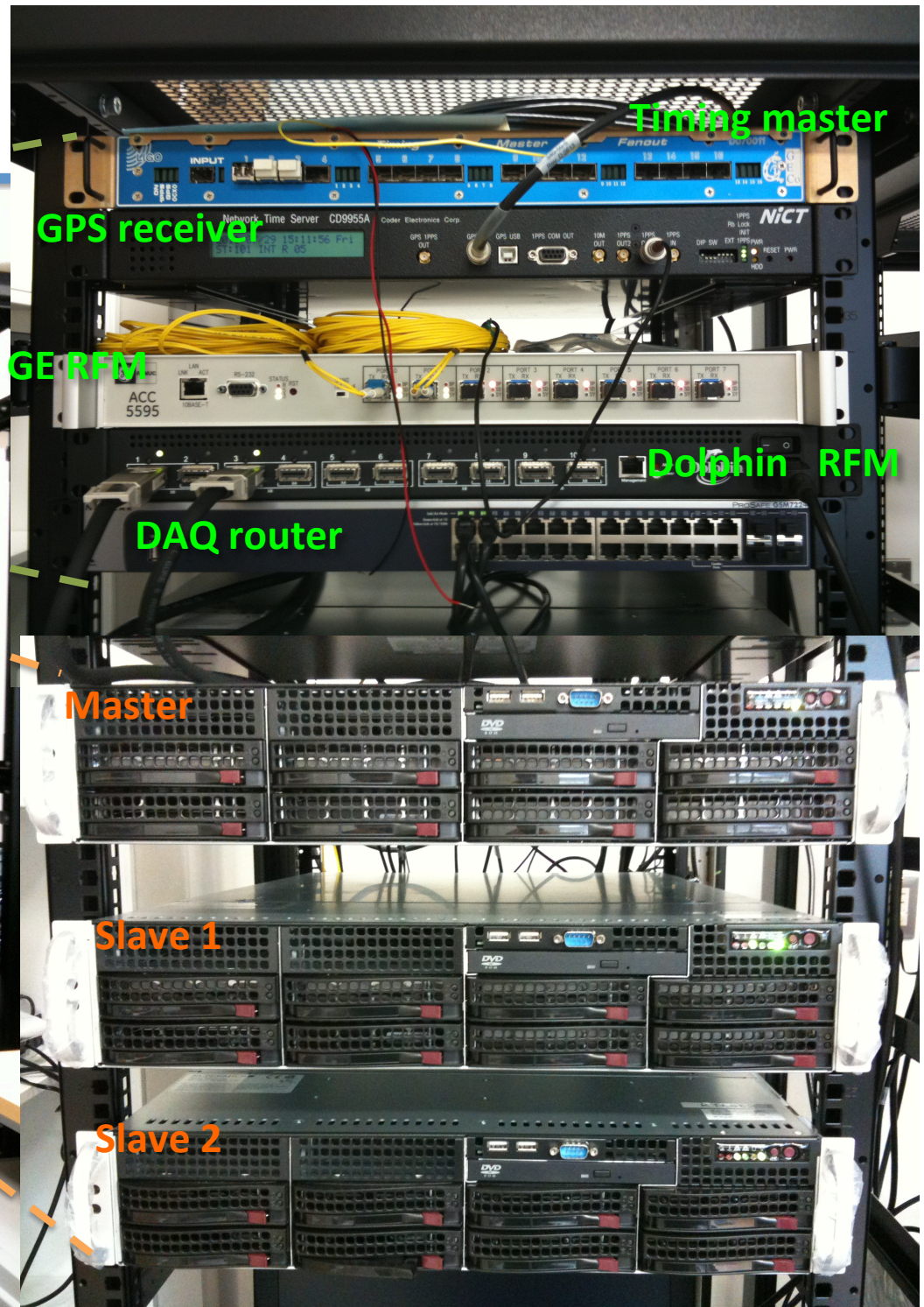
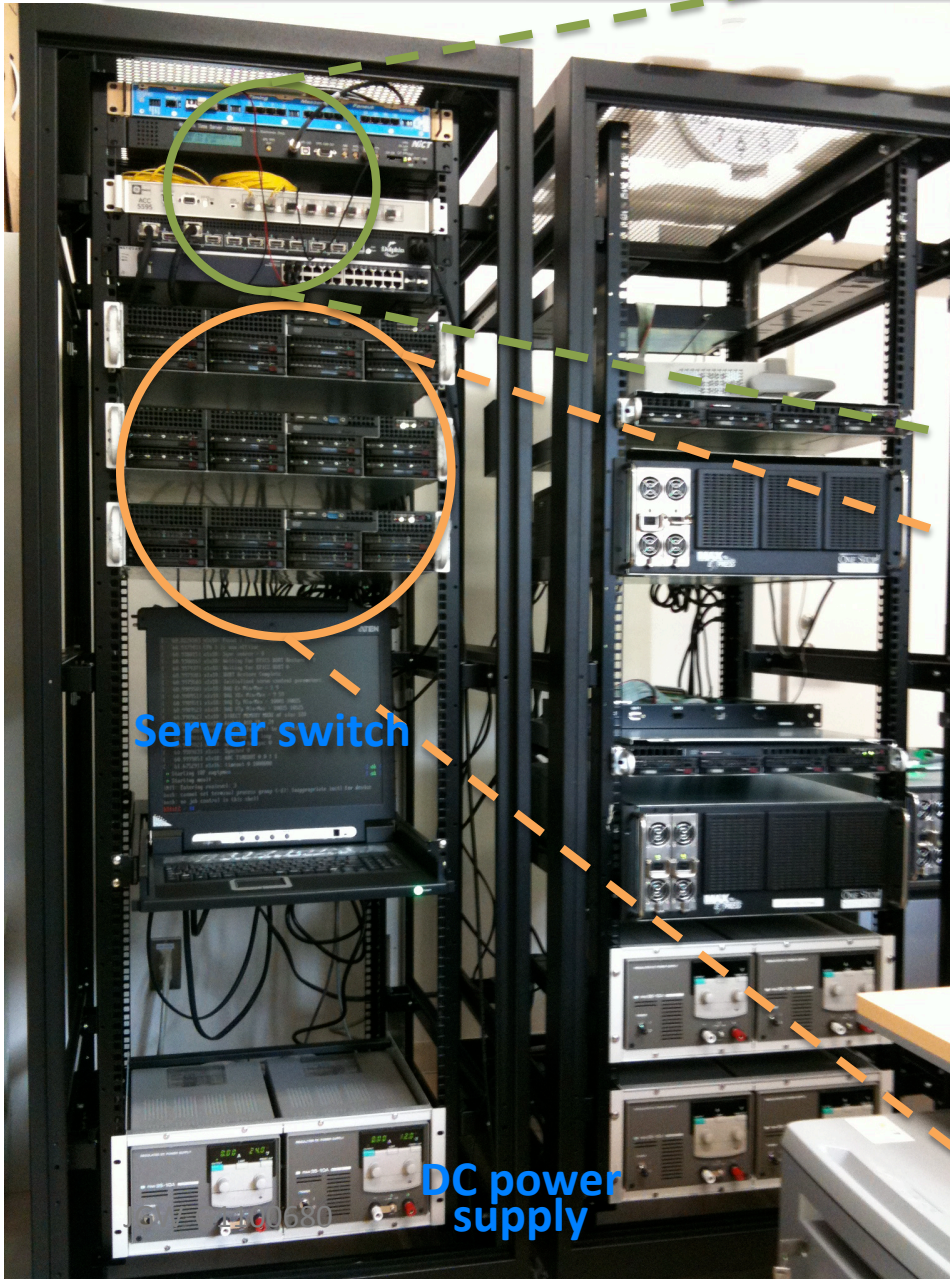
- Current: 2 Anti alias (AA) filter boxes, 1 Anti Image (AI) filter box
- This FY:
 - AA: ~5
 - AI: ~5
 - BO intercaace: ~2

Mass production of circuits: will be ordered as one part of whole system

- AA: ~100
- AI: ~50
- BO interface: ~100



Network test



Client system

